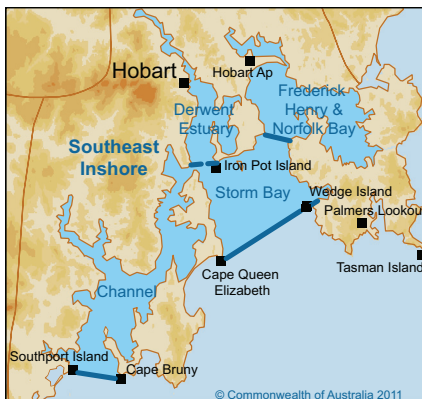


LOCAL WATERS FORECAST IMPROVEMENTS FOR TASMANIA

> BUREAU OF METEOROLOGY > WEATHER SERVICES > MARINE

The Bureau of Meteorology is upgrading its forecast system to provide more detailed forecasts across Australia.



Four new forecasts will be provided for the Derwent Estuary, Storm Bay, Channel and Frederick Henry & Norfolk Bay.

Improved layout with clear sections for winds and seas

Change to consistent terminology from waves to seas

Southeast Inshore Boating Weather Forecast

IDT12450

Separate forecast services for selected local water areas

Local Waters Forecast Frederick Henry and Norfolk Bay

Issued at 5:55 am EDT on Tuesday 25 January 2011 for the period until midnight EDT Thursday 27 January 2011.

New label outlining the extent of the forecast

Please be aware

Wind gusts can be 40 percent stronger than the averages given here, and maximum waves may be up to twice the height.

Warning Summary at issue time

Nil.

Details of warnings are available on the Bureau's website www.bom.gov.au, by telephone 1300-659-216* or through some TV and radio broadcasts.

Weather Situation

A weakening cold front will approach western Bass Strait later on Tuesday before drifting across Tasmania early Wednesday. Another weak cold front will move over Tasmania on Thursday before a high pressure system lingers around Bass Strait on Friday.

Forecast for Tuesday until midnight

Winds: Northwest winds 5 to 15 knots with southeast afternoon sea breezes to 15 knots.

Seas: Below 1 metre.

Forecast for Wednesday

Winds: Northwest winds 10 to 20 knots tending southwest at 5 to 15 knots during the afternoon.

Seas: 1 metre.

Clear headings to describe the forecast period

Forecast for Thursday

Winds: Southwest winds 5 to 15 knots tending northwesterly during the morning at 10 to 20 knots then southwesterly at 5 to 15 knots late afternoon.

Seas: Below 1 metre.

The next routine forecast will be issued at 4:05 pm EDT Tuesday.

New label indicating the next issue time

* Calls to 1300 numbers cost around 27.5c incl. GST, higher from mobiles or public phones.



Australian Government
Bureau of Meteorology

FURTHER INFORMATION : www.bom.gov.au/NexGenFWS

© Commonwealth of Australia 2011