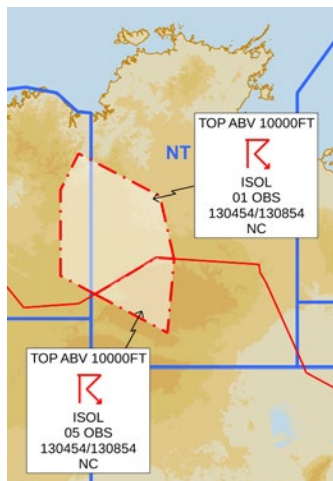


# AVIATION WEATHER PRODUCTS

## Graphical AIRMET

Bureau of Meteorology › Aviation Meteorological Services



The graphical AIRMET is intended to improve situational awareness. The text AIRMET should be used for official flight planning purposes. Information on AIRMETS can be found at [www.bom.gov.au/aviation/data/education/airmet.pdf](http://www.bom.gov.au/aviation/data/education/airmet.pdf)

### Introduction

The Bureau of Meteorology issues a graphical product that represents all text AIRMETS for Australia. The Graphical AIRMET product is intended to provide pilots with a graphical representation of text AIRMETS with information on the occurrence and/or expected occurrence of specified meteorological phenomena that are not already included within the valid Graphical Area Forecast (GAF). This product is intended for situational awareness, and the text AIRMET should be used for flight planning purposes.

### General

Geographical and vertical coverage of the graphical product will be the same as the text product, which is limited to at or below 10,000 feet and covers Australian GAF areas as given in AIP Book GEN 3.5.

Users are to consider the product as being valid only for the issue time. Therefore users need to ensure they are looking at the latest product (the issue time is shown in the bottom left-hand corner of the graphic).

There will be multiple AIRMETS displayed for the one phenomenon when:

- an extended AIRMET is issued and the previous AIRMET (for the same phenomenon) is yet to expire;
- a new AIRMET is issued in response to a significant change to an event given in a previous AIRMET, and the previous AIRMET is yet to be cancelled; and when
- two AIRMETS are issued when a phenomenon crosses the FIR boundary, one for YBBB FIR and one for YMMM FIR

If a text AIRMET cannot be rendered graphically, it will be displayed in text format on the graphic.

### Frequency of Issue

The graphical AIRMET product will be updated every ten minutes and whenever a text AIRMET is issued. It will show an image of Australia with AIRMETS overlaid. There is also the option of viewing zoomed-in versions of three different sectors of Australia covering: Southeast Australia, Northeast Australia, and Western Australia.

There will be a slight delay between the issuance of the text AIRMET and the subsequent update of the graphic. Images will be issued even if there is no AIRMET current.

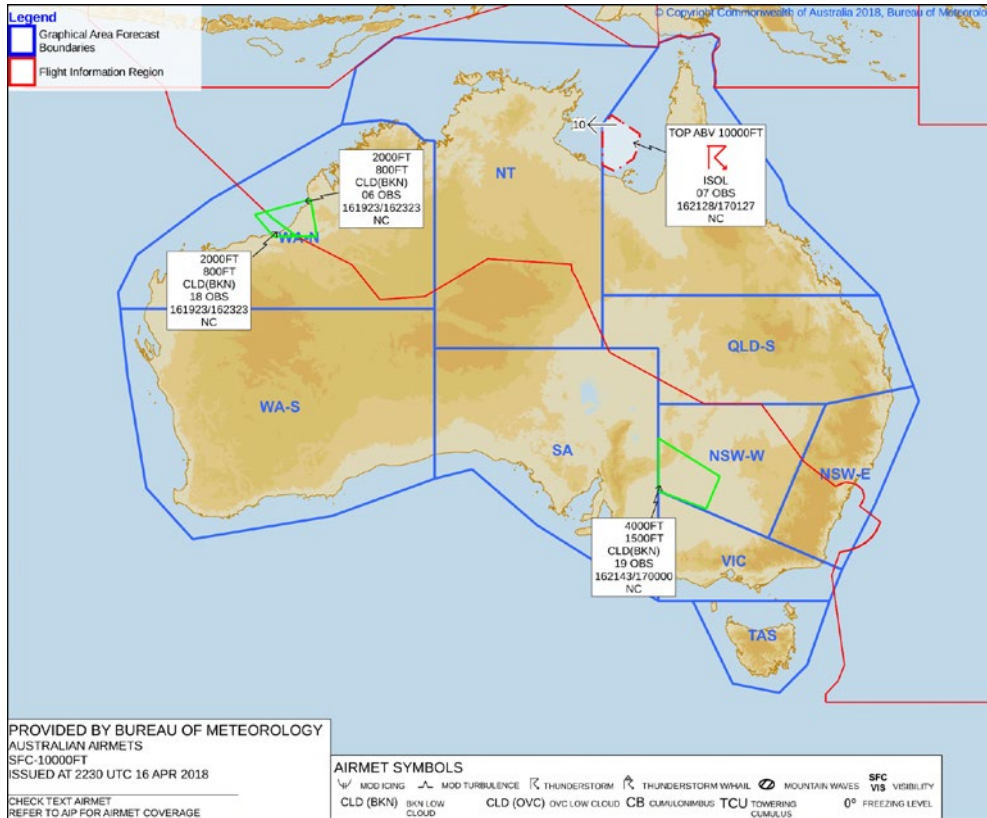


AIRMETS are issued for moderate mountain waves and also represented in graphical format.



Australian Government  
Bureau of Meteorology

## Example of the Graphical AIRMET product



Graphical AIRMET symbols	
	MOD ICING
	MOD TURBULENCE
	THUNDERSTORM
	THUNDERSTORM (WITH HAIL)
	MOUNTAIN WAVES
SFC VIS	VISIBILITY
CLD (BKN)	BKN LOW CLOUD
CLD (OVC)	OVC LOW CLOUD
CB	CUMULONIMBUS
TCU	TOWERING CUMULUS
0°	FREEZING LEVEL

Each polygon describing the horizontal extent of the event will be accompanied by a box giving other information contained in the text product. A decode of the information in the WA-N broken cloud AIRMET and QLD-N thunderstorm AIRMET in the graphic above is:

800FT/2000FT	Vertical extent of phenomenon (base 800FT and top 2000FT)
CLD (BKN)	Phenomenon symbol (broken low cloud)
18	AIRMET number
OBS	Phenomenon (broken low cloud) observed
161923/162323	AIRMET validity (valid from 1923 UTC to 2323 UTC on the 16th)
NC	Expected change in intensity (No change)

TOP ABV 10000FT	Vertical extent of phenomenon (tops above 10,000 FT)
	Phenomenon symbol (thunderstorm)
ISOL	Phenomenon descriptor (isolated)
07	AIRMET Number
OBS	Phenomenon (thunderstorm) observed
162128/170127	AIRMET validity (valid from 2128 UTC on the 16th to 0127 UTC on the 17th)
NC	Expected change in intensity (No change)

The text AIRMETs from which the graphic was produced are:

YMMM AIRMET 19 VALID 162143/170000 YSRF-  
 YMMM MELBOURNE FIR BKN CLD 1500/4000FT OBS WI S3050 E14100 -YIVO -  
 YBRN - S3340 E14100 STNR NC  
 RMK: GAF NSW-W=

YBBB AIRMET 07 VALID 162128/170127 YBRF-  
 YBBB BRISBANE FIR ISOL TS OBS WI S1430 E14000 - S1500 E14000 - S1550  
 E13940 - S1610 E13910 - S1630 E13840 - S1610 E13800 - S1540 E13800 -  
 S1520 E13800 - S1450 E13800 - S1420 E13800 - S1400 E13800 - S1330  
 E13830 - S1350 E13900 TOP ABV 10000FT MOV W 10KT NC  
 RMK: GAF QLD-N=

YBBB AIRMET 06 VALID 161923/162323 YPRF-  
 YBBB BRISBANE FIR BKN CLD 800/2000FT OBS WI S1850 E11920 - S1800  
 E12220 - S2000 E12240 - S2000 E12020 STNR NC  
 RMK: GAF WA-N SEE ALSO YMMM 18=

YMMM AIRMET 18 VALID 161923/162323 YPRF-  
 YMMM MELBOURNE FIR BKN CLD 800/2000FT OBS WI S1850 E11920 - S1800  
 E12220 - S2000 E12240 - S2000 E12020 STNR NC  
 RMK: GAF WA-N SEE ALSO YBBB 06=



**Australian Government**  
**Bureau of Meteorology**

Airservices Australia is the official distributor of aviation forecasts, warnings and observations issued by the Bureau of Meteorology. Airservices' flight briefing services are available at [www.airservicesaustralia.com](http://www.airservicesaustralia.com). Telephone contact details for elaborative briefings are contained in Airservices' Aeronautical Information Publication Australia (AIP), which is available online through their website.

Other brochures produced by the Bureau of Meteorology's aviation weather services program can be found at [www.bom.gov.au/aviation/knowledge-centre](http://www.bom.gov.au/aviation/knowledge-centre).

A vertical line in the margin indicates a text amendment since last update.