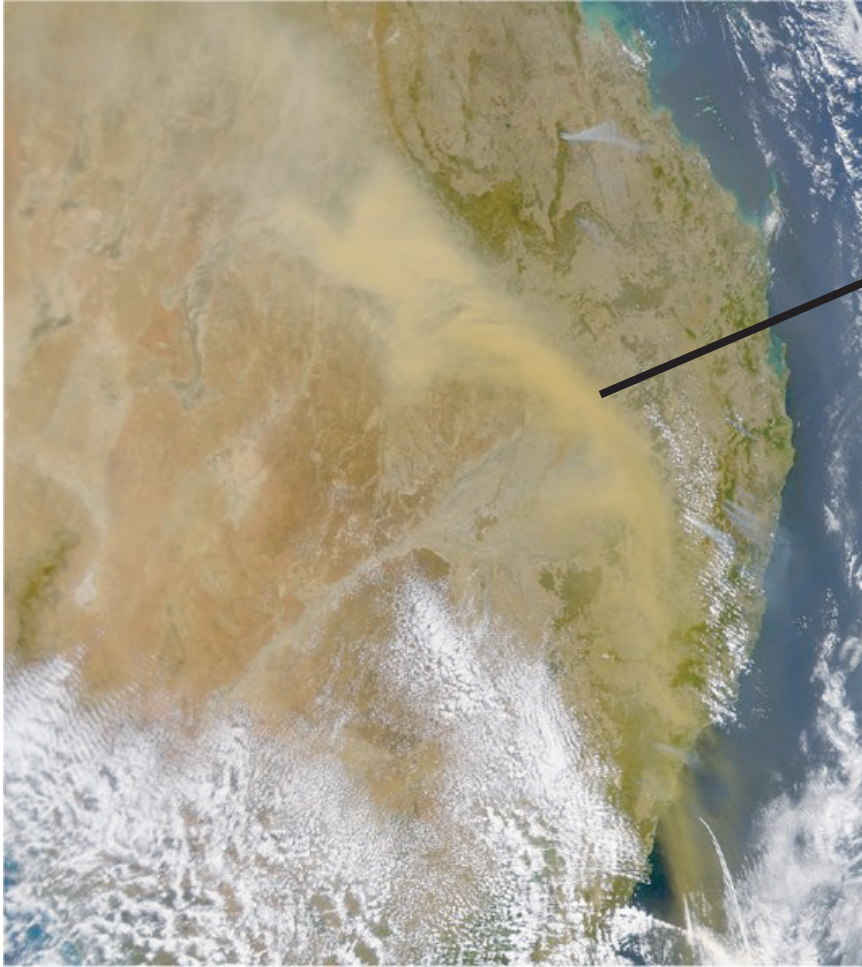




ANNUAL CLIMATE SUMMARY 2002



23 October: An east Australian dust storm as captured by the Chinese weather satellite FY-1D. It is seen here as a orange-brown streak aligned NW-SE from inland Queensland to coastal NSW. It was estimated at over 1500 km in length, and over 400 km wide. The depth was reported at up to 2500 m.

12 November: A dust cloud moving across Griffith, NSW. The dust storm progressed eastward across the State eventually affecting coastal areas, including Sydney.

