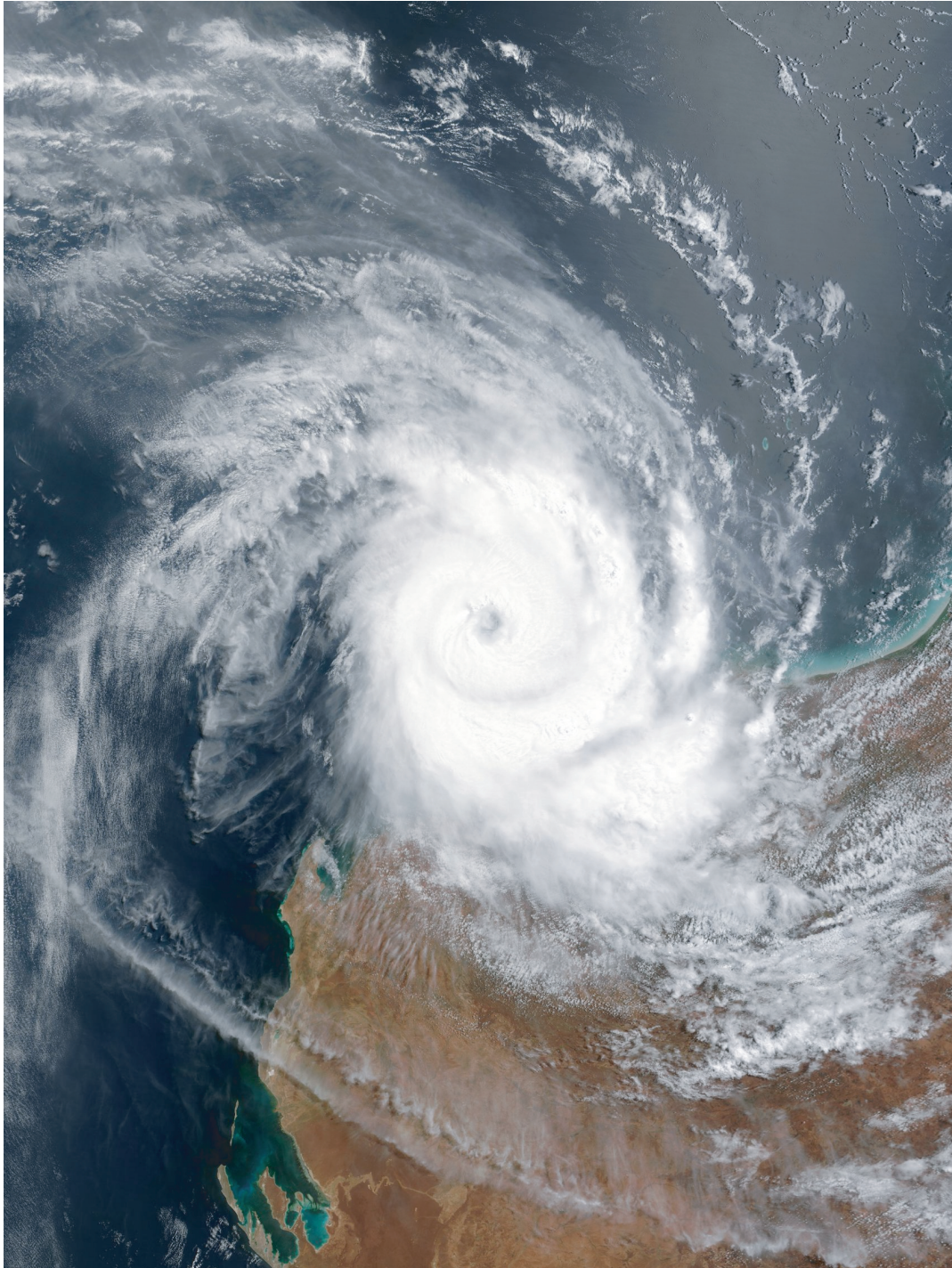




Australian Government
Bureau of Meteorology

ANNUAL CLIMATE SUMMARY 2004



29th February: Severe tropical cyclone *Monty* off the northwest coast of Western Australia. This storm had maximum sustained winds of 95 knots (176 km/h) and crossed the coast on 1st March near Mardie station. The image was captured by a NASA polar orbiting satellite.

Prepared by Climate Analysis Section,
National Climate Centre,
Bureau of Meteorology,
Melbourne.