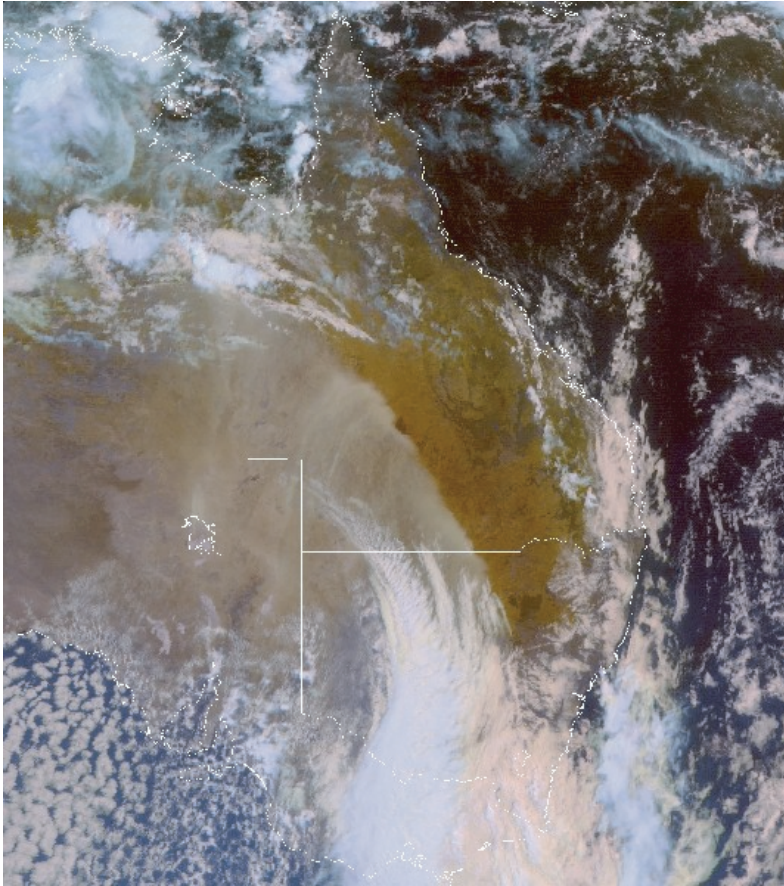




ANNUAL CLIMATE SUMMARY 2005



2nd February: A strong low pressure system begins to develop over Victoria. It resulted in record rainfall and low temperatures during the following 48 hours. Vast areas of raised dust are evident over western Queensland, northwest NSW and northeast SA. The image was captured by the NOAA GOES 9 geostationary satellite.

8th March: Category 5 tropical cyclone *Ingrid* closes in on Cape York Peninsula, far north Queensland.

This storm first made landfall south of Lockhart River on the 10th. It continued to track to the west-northwest across the Gulf of Carpentaria, then just north of the Top End before making final landfall north of Kalumburu on WA's Kimberley coast.

The image was captured by a NASA polar orbiting satellite.

