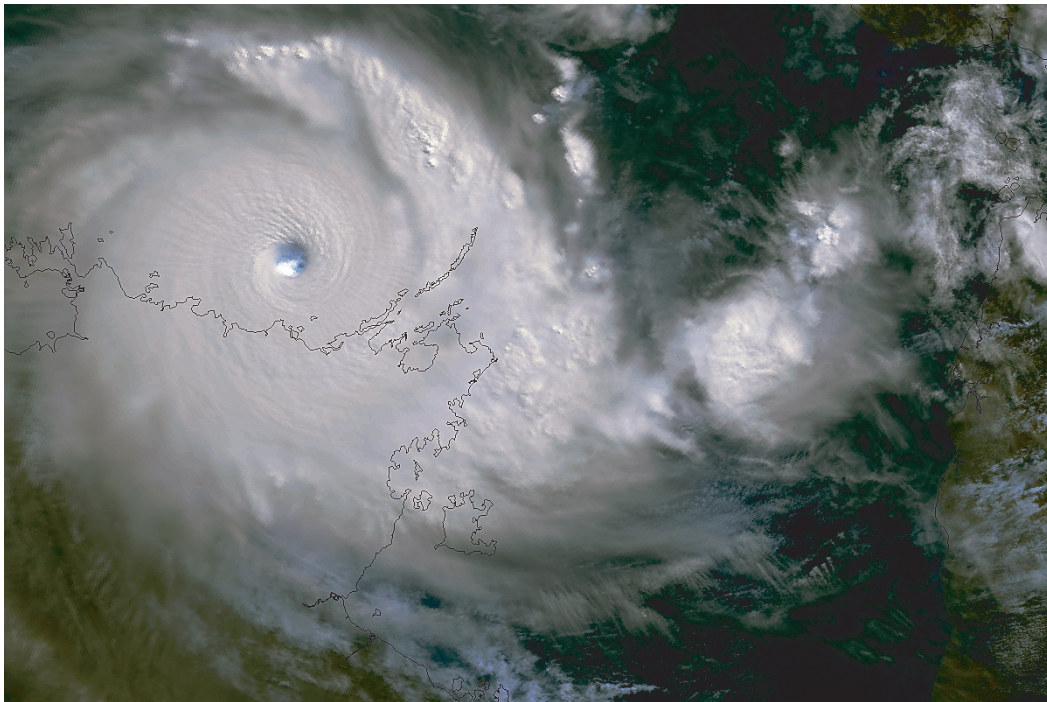


Table of contents

1. Overview.....	1-3
2. Monthly Maximum Temperatures Departures from Average.....	4, 5
3. Monthly Minimum Temperatures Departures from Average.....	6, 7
4. Monthly Rainfall Deciles.....	8, 9
5. Monthly Rainfall Totals / Annual Deciles and Totals.....	10-12
6. Annual Review and Significant Events.....	13-15
7. Rainfall and Temperature Extremes by State.....	16
Capital City Summary.....	Inside back cover



23rd April: Severe (category 5) tropical cyclone *Monica* churns across the Arafura Sea on a westerly track. *Monica* is the most intense tropical cyclone ever observed in the Northern Territory region. At peak intensity, the storm was estimated to have 250 km/h 10-minute sustained winds, with gusts to 360 km/h. Estimates of the minimum central air-pressure vary from 880 hPa to 905 hPa. The image was captured by a NASA polar-orbiting satellite.