

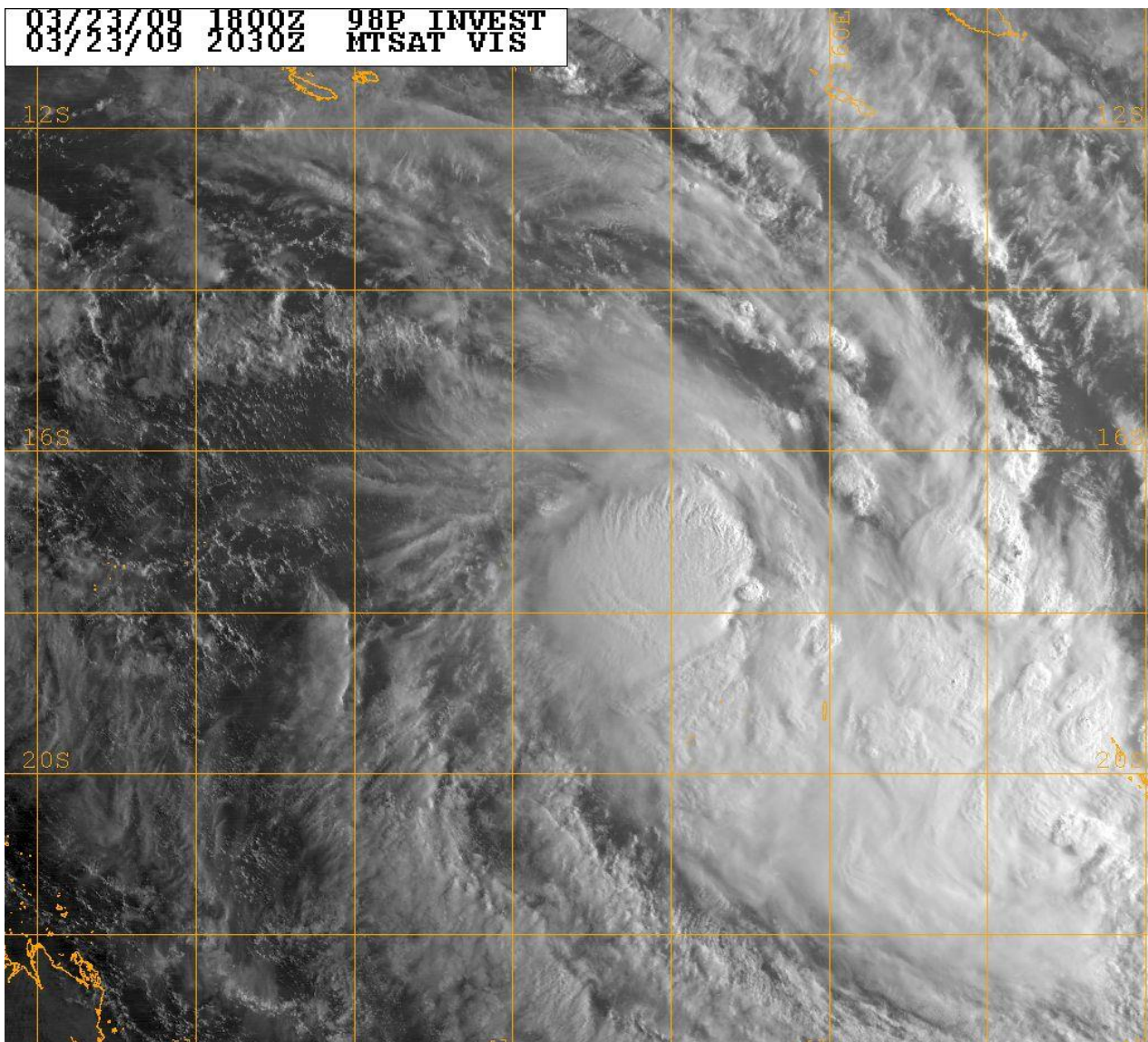


Australian Government
Bureau of Meteorology

Tropical Cyclone Jasper

23 – 24 March 2009

Brisbane Tropical Cyclone Warning Centre
Bureau of Meteorology
April 2012



Naval Research Lab http://www.nrlmry.navy.mil/sat_products.html
<-- Visible (Sun elevation at center is 16 degrees) -->

Summary

Tropical Cyclone Jasper formed into a tropical low in the Coral Sea on 23 March. The low developed a southeasterly track away from Queensland coast before intensifying to tropical cyclone strength during the early hours on 24 March. Jasper quickly intensified further to category 2 strength prior to entering the Fiji area of responsibility later that morning.

Tropical Cyclone Jasper continued to move in a southeasterly direction before weakening below tropical cyclone strength west of New Caledonia late on 25 March.

Meteorological Description

Intensity analysis

Intensity analysis was based chiefly on Dvorak values. Maximum wind gusts in the Brisbane TCWC area of responsibility were up to 95 km/h.

Motion

Jasper maintained southeast track under the influence of an upper trough.

Structure

Jasper showed curved band characteristics on microwave imagery during the time of maximum convection. This is consistent with a category 2 cyclone.

Impact

No direct impacts were observed in Queensland as a result of Tropical Cyclone Jasper.

Observations

Swell / waves

As Jasper weakened near New Caledonia it interacted with a firm ridge to the south. This led to a large easterly swell developing around southeast Queensland in the following days. Wave height of over 6 metres with a peak period of over 10 seconds were recorded at the Brisbane offshore waverider buoy (courtesy of Department of Environment and Resource Management) while large surf was observed on the Gold and Sunshine coasts.

Track Data

Year	Month	Day	Hour (UTC)	Position Latitude S	Position Longitude E	Position Accuracy nm	Max wind 10min knots	Max gust knots	Central Pressure hPa	Rad. of Gale s nm	Rad. of storm force winds	Radius Max. Wind (RMW)
2009	03	23	00	14.7	154.2	45	25	45	999			
2009	03	23	06	14.9	155.25	45	30	45	997			
2009	03	23	12	15.9	156.6	40	30	45	997			
2009	03	23	15	16.0	157.25	30	40	55	990	180		10
2009	03	23	18	16.05	157.9	25	50	70	985	280	60	10
2009	03	24	00	16.95	159.6	40	50	70	985	280	60	10
2009	03	24	0130	17.45	160.0	40	50	70	985	280	60	10

Table 1: Best track summary for TC Jasper.

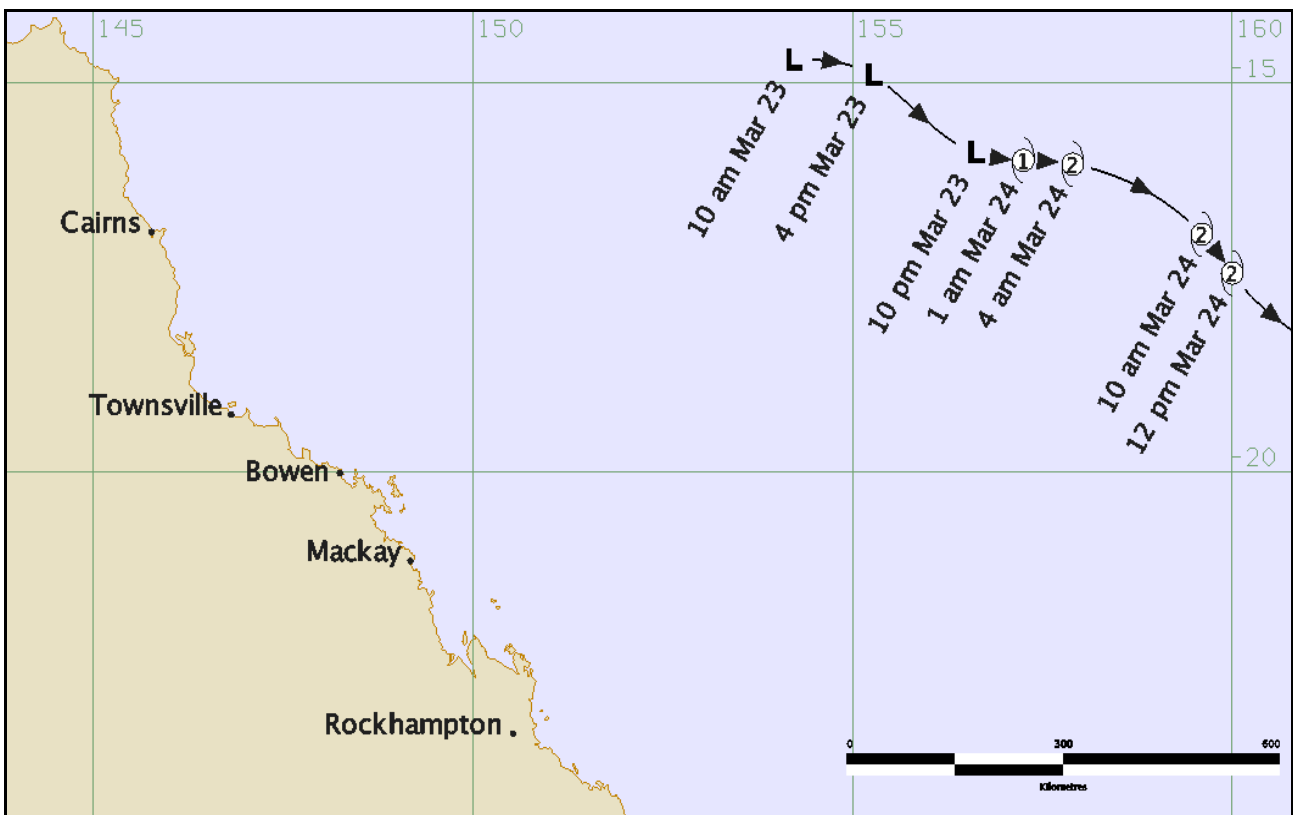


Figure 1: Track of Tropical Cyclone Jasper.

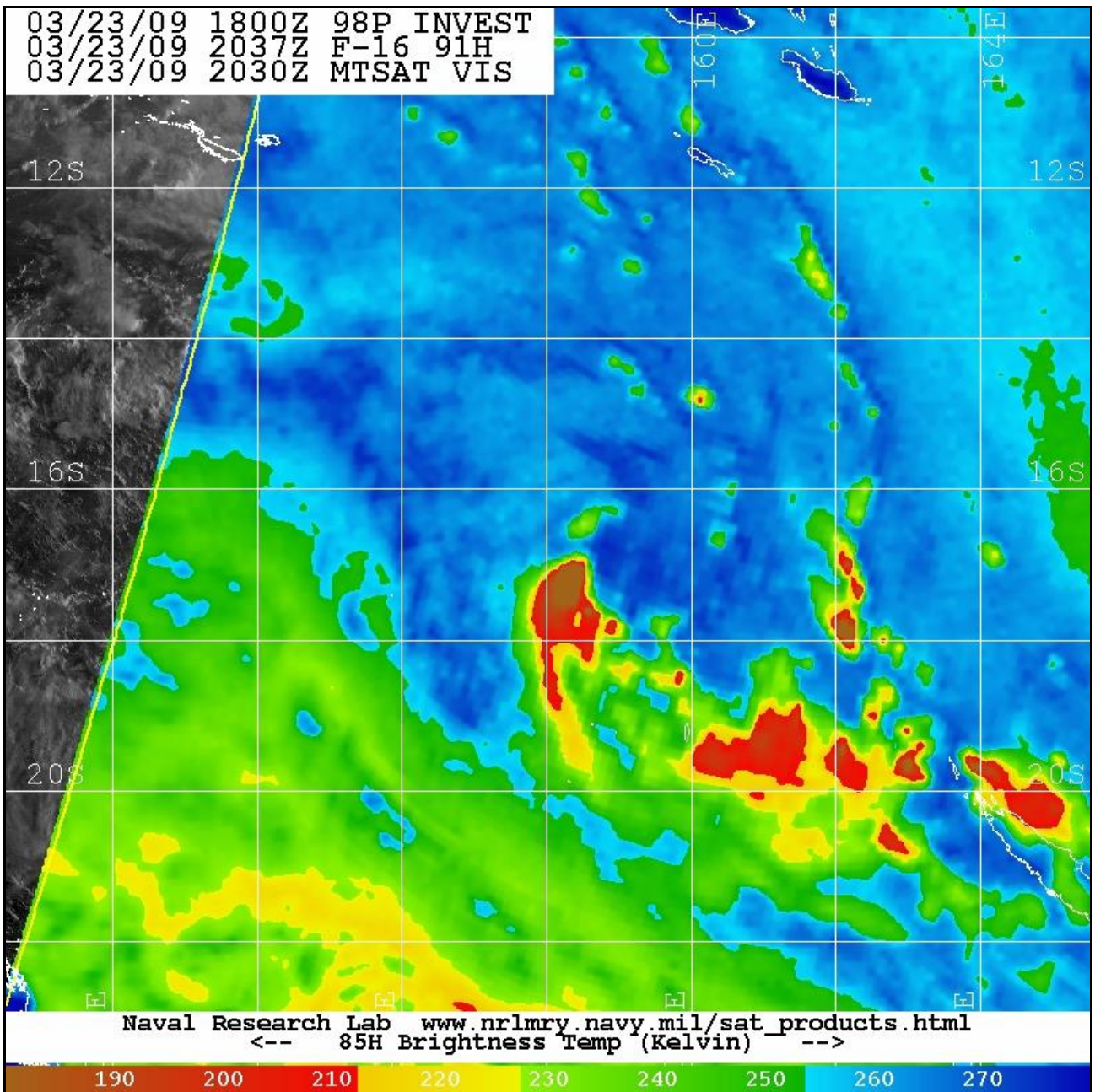


Figure 2: Microwave (TC SSMIS 91GHz) image at 0637 EST 24 March 2009 (2037 UTC 23 March).

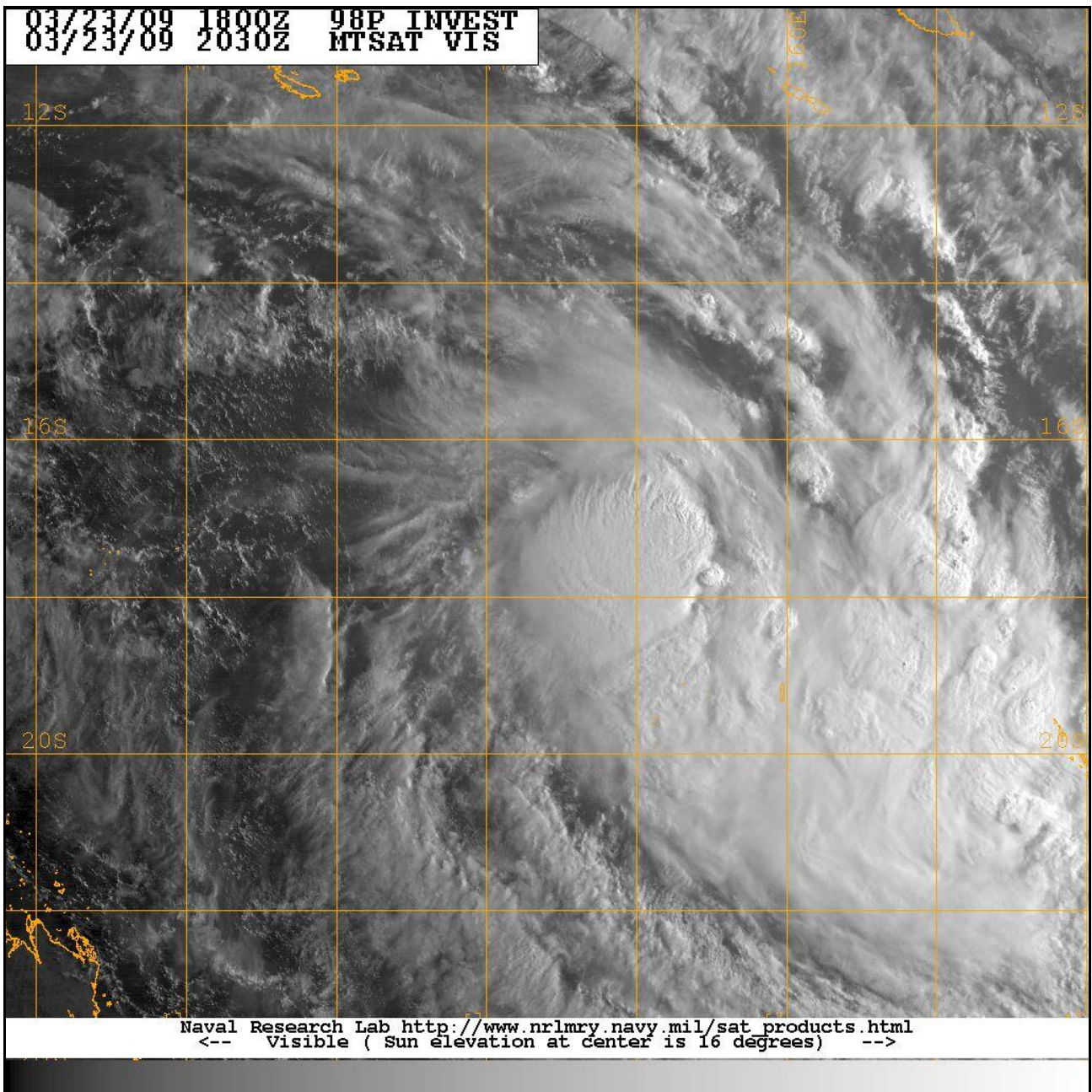


Figure 3: MTSAT visible image at 0630 EST 24 March 2009 (2030 UTC 23 March).

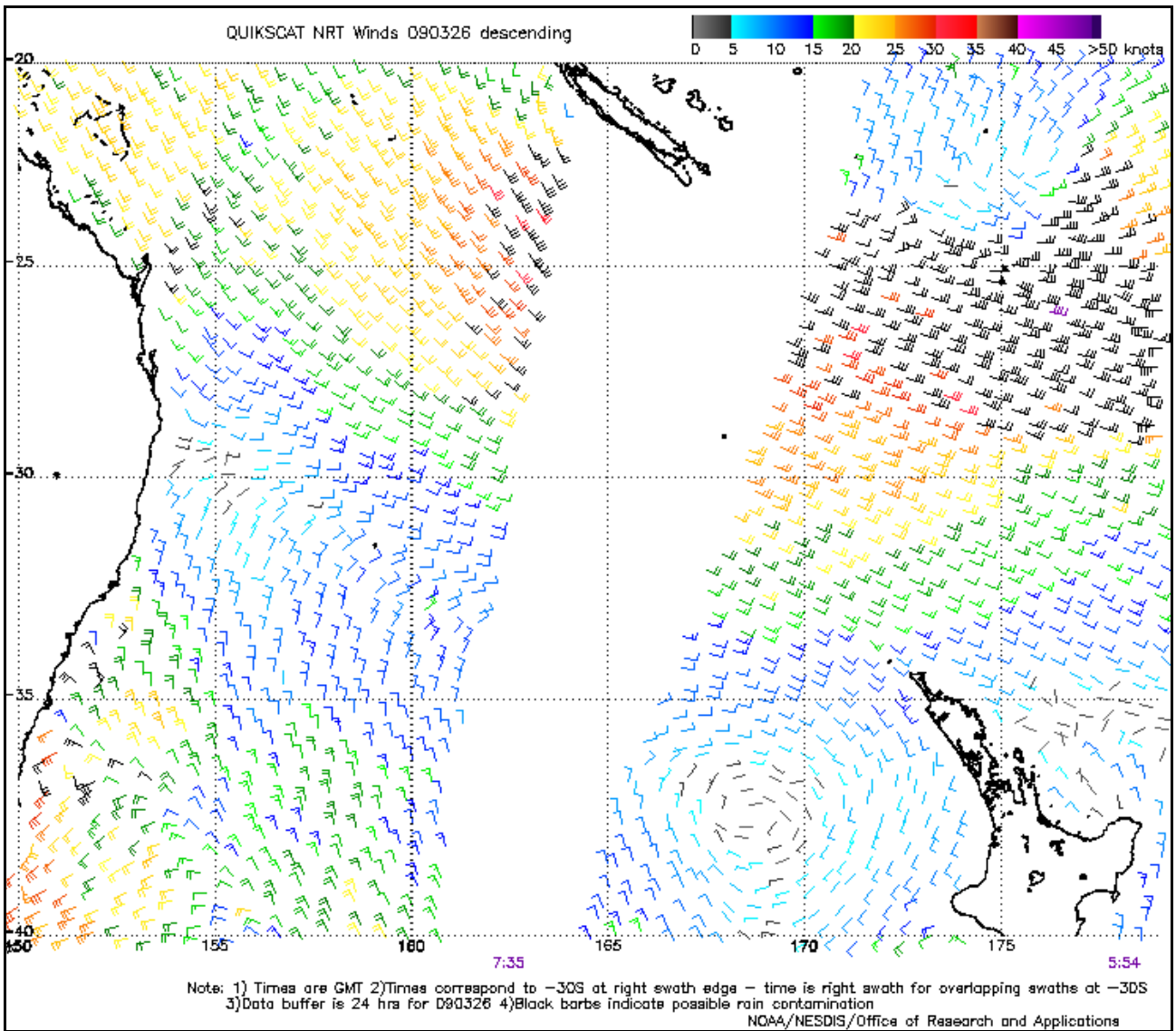


Figure 4: Scaterrometer (Quikscat) image at 1735 EST 26 March 2009 (0735 UTC 26 March).