

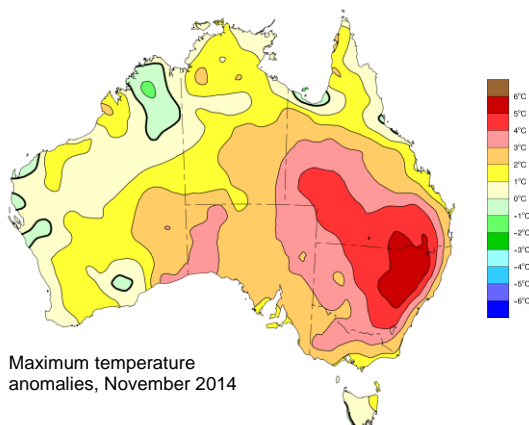
National Climate and Water Briefing

18 December 2014

November was another very warm month for Australia, with maximum and mean temperatures the warmest on record for Australia. Rainfall was below average through the eastern States and across the Top End but above average across Western Australia and parts of western Queensland. Mostly low stream flows were observed in November. A warmer than normal start to the year is likely for much of Australia in 2015, with drier than normal conditions likely over the west and northeast. Below average streamflows are forecast for most locations.

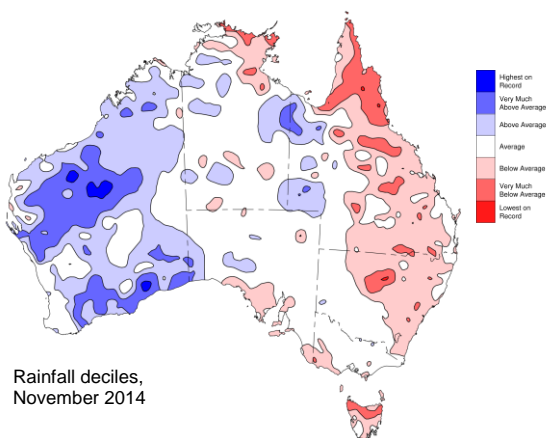
Recent conditions

- November maximum temperatures were warmest on record for Australia.



Maximum temperature anomalies, November 2014

- November rainfall 22% below average nationally.
- Queensland rainfall 58% below average; New South Wales 54% below average.
- Western Australia rainfall above average.



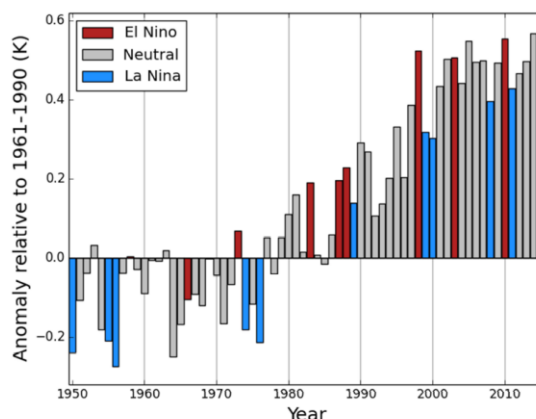
Rainfall deciles, November 2014

- Long-term rainfall deficiencies persist largely in inland Queensland and northern New South Wales.

Global climate

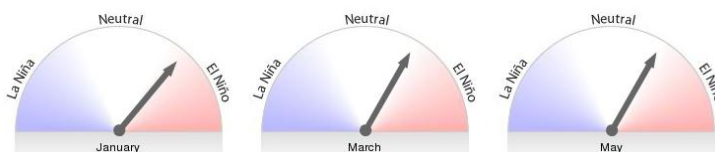
- Globally, January–October 2014 tied equal warmest on record.
- Sea surface temperatures particularly warm; sea levels reached a new high.

January to October global mean temperature



El Niño–Southern Oscillation

- Most ENSO indicators remain close to El Niño thresholds.
- ENSO Tracker remains at El Niño ALERT, indicating at least a 70% chance of El Niño developing in the coming months.



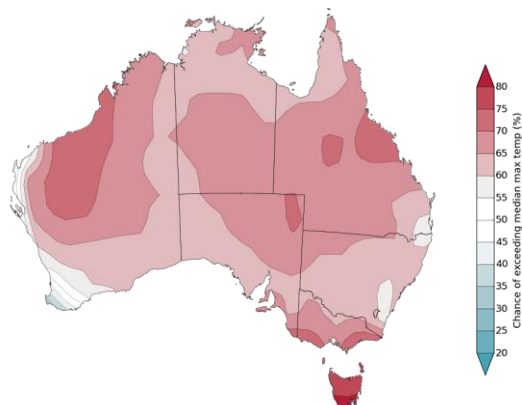
National Climate and Water Briefing

18 December 2014

Climate outlook

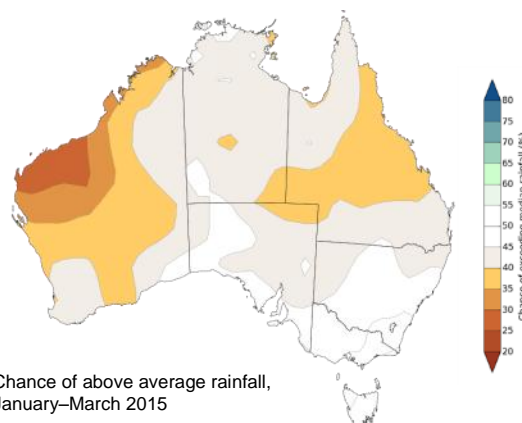
January–March 2015

- Warmer than average days and nights more likely across most of the country



Chance of above average maximum temperature, January–March 2015

- Drier than average summer more likely over much of Queensland and most of Western Australia.



Chance of above average rainfall, January–March 2015

- Regardless of whether El Niño is declared, El Niño-like impacts are expected over summer

More information

Rainfall and temperature outlook
www.bom.gov.au/climate/outlooks

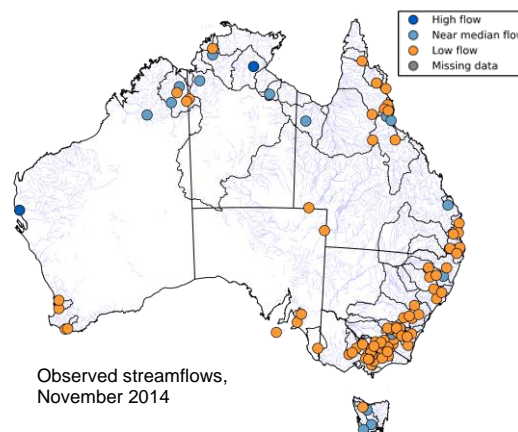
Seasonal streamflow forecasts and water storage
www.bom.gov.au/water

Severe weather warnings
www.bom.gov.au

Streamflow conditions and outlook

Observed streamflow November 2014

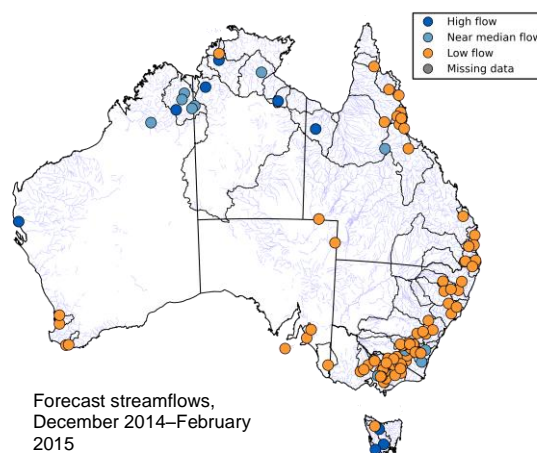
- Mostly low streamflows observed



Observed streamflows, November 2014

Outlook December 2014–February 2015

- Low flows more likely at 89 forecast locations; near median flows at 14 forecast locations; high flows forecast at 9 locations



Forecast streamflows, December 2014–February 2015

Contact

Lucy McGarva, Senior Climate Liaison Officer
(02) 6210 3024
l.mcgarva@bom.gov.au

