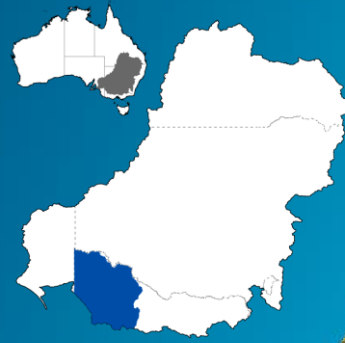




# Water Reporting Summary – Wimmera–Mallee Catchment

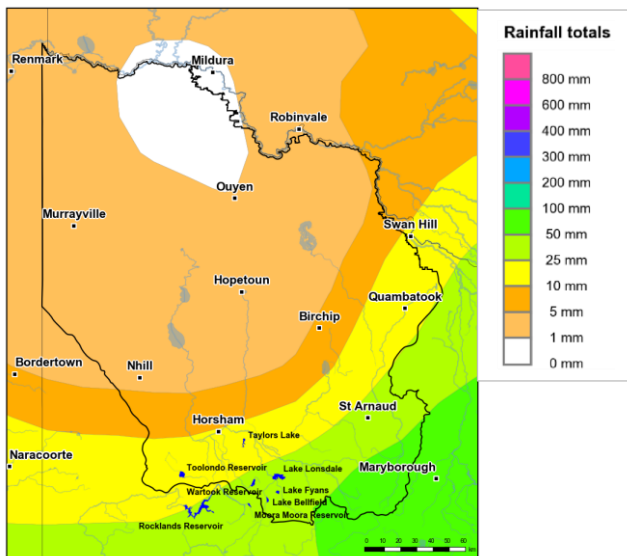
15 April 2021



## Overview

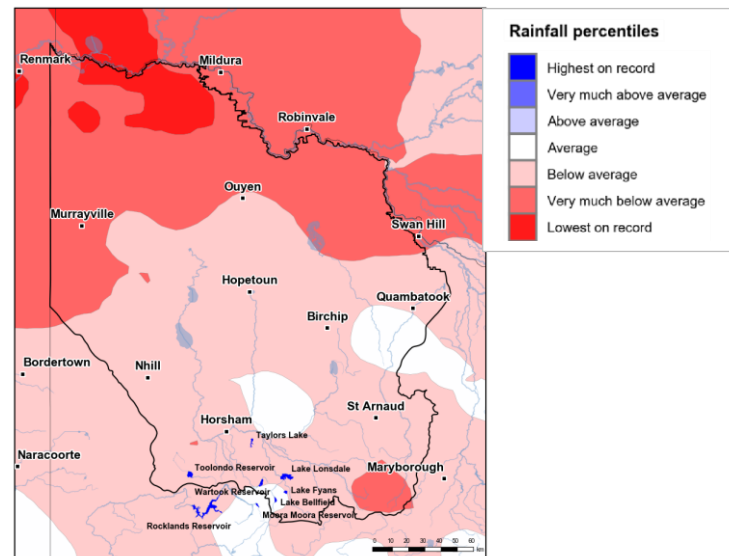
- Despite the widespread rainfall recorded across the Murray-Darling Basin in the last month, most of the Wimmera–Mallee catchment received less than 10 mm of rainfall, with areas south of Mildura and north of Ouyen receiving less than 1 mm. In the south-east, rainfall increased with areas around the reservoirs and lakes receiving 25 to 100 mm (Figure 1). The total area-average rainfall for the catchment was 9 mm. This recent rainfall is in the context of the extended dry period since January 2017 with rainfall for the central and upper Wimmera–Mallee catchment mainly below average, and downstream areas mainly very much below average (Figure 2).
- The rainfall in the last month has resulted in below average root zone soil moisture in most areas of the Wimmera-Mallee catchment, while areas around Quambatook and St Arnaud experienced average soil moisture. It has not translated into runoff and inflows into storages (Figure 3).
- Allocations for Wimmera–Mallee Pipeline Product entitlement holders are currently 57% (Figure 4 and Table 1) (GMMWater Storage Manager).

## Recent conditions



<http://www.bom.gov.au>  
© Commonwealth of Australia 2021, Bureau of Meteorology

Figure 1: Rainfall totals for the last 30 days  
(17 March to 15 April 2021)



<http://www.bom.gov.au>  
© Commonwealth of Australia 2021, Bureau of Meteorology

Figure 2: Rainfall percentiles since January 2017 (compared to 1900–2019 long-term average) (Jan 2017 to Mar 2021)

Note: Rainfall percentiles for the period from January 2017 are shown as the Bureau of Meteorology considers January 2017 to be the start of the current dry period for eastern Australia.

## How much water is in the storages?

**Storage volume:** Lake Bellfield, Lake Fyans, Lake Lonsdale, Moora, Rocklands, Taylors Lake, Toolondo and Wartook storages as at 6 April 2021

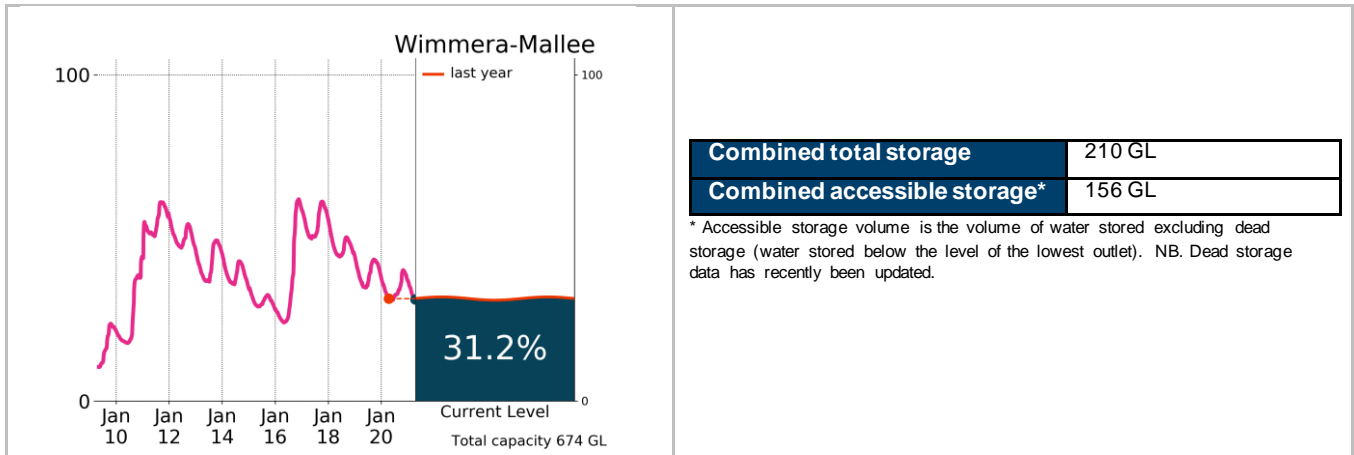


Figure 3: Current total storage (% of total capacity) compared to the last ten years

Source: [BoM water storages dashboard](#)

## Who is the water for?

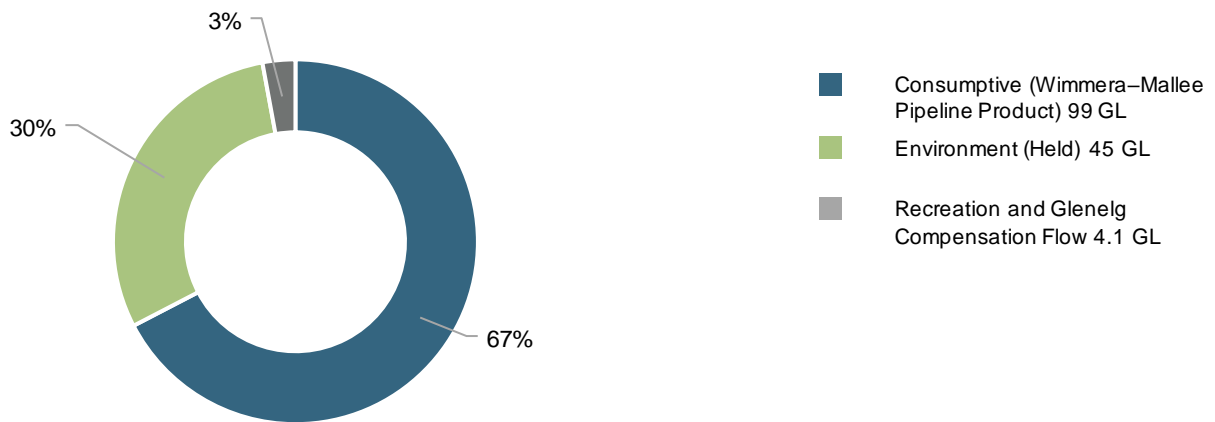


Figure 4: Volumes of water available, including carryover (% of total) (last updated 4 March 2021)

Source: [GWMWater](#)

Table 1: Allocation announcements (%) and market prices – selected licence categories as at 15 April 2021

Licence category	Announced allocation	Historic comparison (same time of year)	Entitlement prices (monthly median)	Allocation price (median – last 7 days)
Wimmera-Mallee Pipeline Product	57%	Similar to last year	n/a	n/a

Source: [GWMWater](#) and [BoM water markets dashboard](#)

FIND OUT MORE

For more information email [water@bom.gov.au](mailto:water@bom.gov.au)



With the exception of logos, photography and data referenced as being from other organisations, this publication is licensed under a Creative Commons Attribution 3.0 Australia Licence. The terms and conditions of the licence are available at <http://creativecommons.org/licenses/by/3.0/au>. Attribution for this publication should be: © Commonwealth of Australia (Bureau of Meteorology) 2021.