



Water Reporting Summary – Macquarie–Castlereagh Catchment

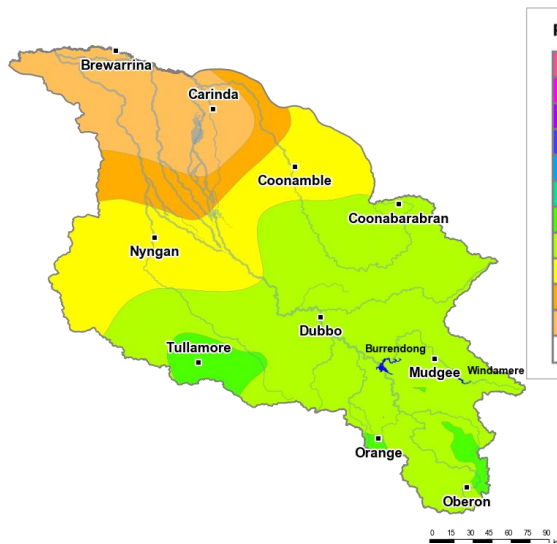
15 December 2020



Overview

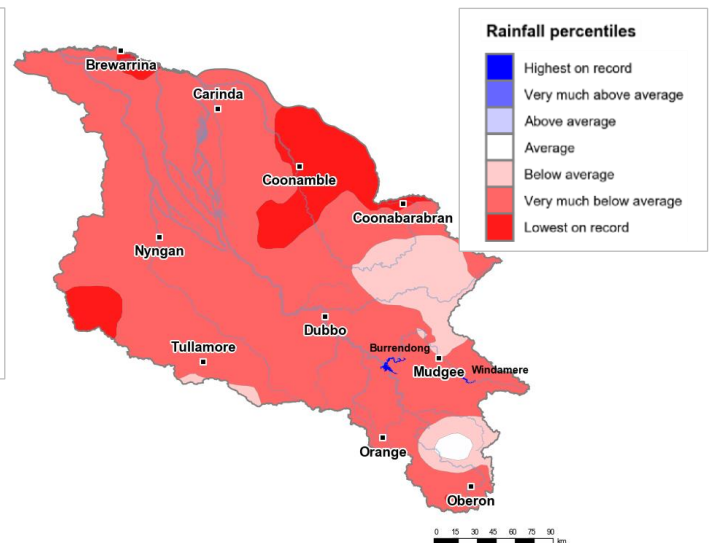
- In the last 30 days, most of the central and upstream areas of the Macquarie–Castlereagh catchment received 25 to 50 mm of rainfall, including the catchment areas for Windamere and Burrendong Dams. The exception was near Tullamore which received up to 100 mm. Some central areas near Coonamble and Nyngan received 10 to 25 mm of rainfall, while areas downstream of Carinda received less than 5 mm (Figure 1). The total area-average rainfall for the catchment was 25 mm, with around half of this rainfall received in one day (6 December). Rainfall in the last month is in the context of the extended dry period since January 2017 with rainfall across the Macquarie–Castlereagh catchment mainly being very much below average or lowest on record (Figure 2).
- The recent rainfall has helped to maintain average or above average root zone soil moisture conditions across most of the Macquarie–Castlereagh catchment, except for below average soil moisture near Brewarrina. Recent rainfall has not translated into significant runoff and inflows into storages (Figure 3).
- Announced allocations for general security entitlement holders remain at 23% (Figure 4) (NSW DPIE). For this time of year, these are the highest allocations since 2017–18 (Table 1).
- Allocation prices are currently \$200 per ML which is the same as prices paid last month (Table 1).

Recent conditions



<http://www.bom.gov.au>
© Commonwealth of Australia 2020, Bureau of Meteorology

Figure 1: Rainfall totals for the last 30 days
(16 Nov to 15 Dec 2020)



<http://www.bom.gov.au>
© Commonwealth of Australia 2020, Bureau of Meteorology

Figure 2: Rainfall percentiles since January 2017 (compared to 1900–2019 long-term average) (Jan 2017 to Nov 2020)

Note: Rainfall percentiles for the period from January 2017 are shown as the Bureau of Meteorology considers January 2017 to be the start of the current dry period for eastern Australia.

How much water is in the storages?

Storage volume: Burrendong, Windamere storages as at 15 December 2020

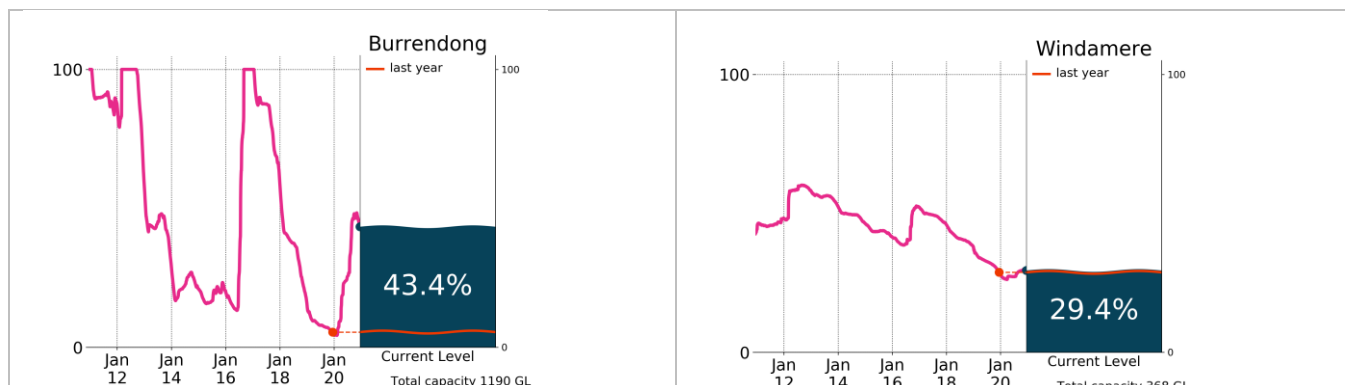


Figure 3: Current total storage (% of total capacity) compared to the last ten years

Source: [BoM water storages dashboard](#)

Who is the water for?

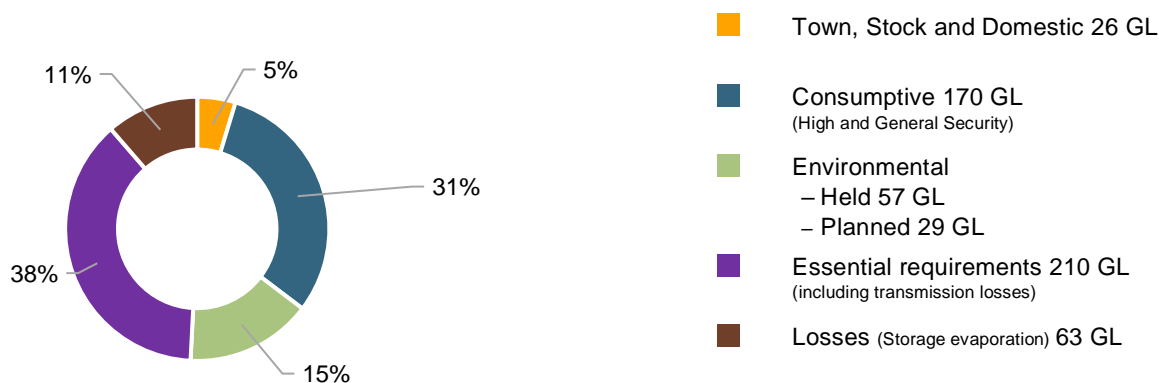


Figure 4: Volumes of water allocated (% of total) for the 2020–22 water years (as at 11 December 2020)

Source: [NSW Department of Planning, Industry and Environment](#)

NB: Allocation information shown here is water allocated for various purposes from the Macquarie and Cudgegong regulated river sources within the Macquarie–Castlereagh catchment as at 11 December 2020. It does not represent remaining available allocated water as it does not allow for water used, traded or new storage inflows (in excess of minimum assumptions).

Table 1: Allocation announcements (%) and market prices – selected licence categories as at 15 December 2020

Licence category	Announced allocation	Historic comparison (same time of year)	Entitlement prices (monthly median)	Allocation price (median – last 7 days)
Stock & Domestic	100%	Same as most years	n/a	\$200/ML*
High Security	100%	Same as most years	n/a	
General Security	23%	Highest allocation since 2017–18	n/a	
Average Carryover (General Security)	8% currently available	1.6 % available last year	n/a	

*Indicative - limited trades

Source: [NSW Department of Planning, Industry and Environment](#) and [BoM water markets dashboard](#)

FIND OUT MORE

For more information email water@bom.gov.au



With the exception of logos, photography and data referenced as being from other organisations, this publication is licensed under a Creative Commons Attribution 3.0 Australia Licence. The terms and conditions of the licence are available at <http://creativecommons.org/licenses/by/3.0/au>. Attribution for this publication should be: © Commonwealth of Australia (Bureau of Meteorology) 2020.