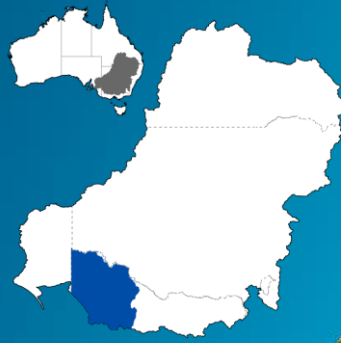




Water Reporting Summary – Wimmera–Mallee Catchment

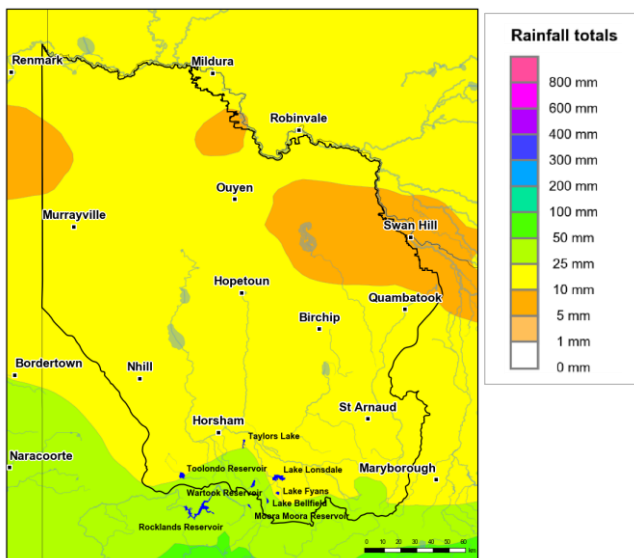
15 December 2020



Overview

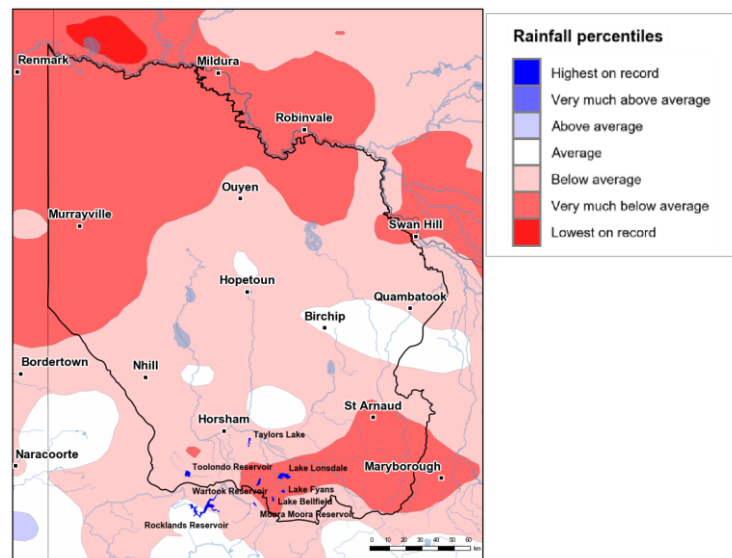
- In the last month, most of the Wimmera–Mallee catchment received 10 to 25 mm of rainfall, with the exception of downstream areas near Swan Hill which received less than 5 mm of rainfall, and upstream areas near Toolondo Reservoir, Lake Lonsdale, Lake Fyans and Lake Bellfield which received up to 50 mm (Figure 1). The total area-average rainfall for the catchment was 14 mm. This recent rainfall is in the context of the extended dry period since January 2017 with rainfall for the central Wimmera–Mallee catchment being average or below average, and the remainder of the catchment being mainly very much below average (Figure 2).
- Limited rainfall in the last month has resulted in soils starting to dry out with average or below average root zone soil moisture for the Wimmera–Mallee catchment. Limited rainfall has not translated into significant runoff and inflows into storages (Figure 3). Allocations for Wimmera–Mallee Pipeline Product entitlement holders have increased slightly to 50% (a 2% increase since November) (Figure 4 and Table 1) (GMMWater Storage Manager).

Recent conditions



<http://www.bom.gov.au>
© Commonwealth of Australia 2020, Bureau of Meteorology

Figure 1: Rainfall totals for the last 30 days
(16 Nov to 15 Dec 2020)



<http://www.bom.gov.au>
© Commonwealth of Australia 2020, Bureau of Meteorology

Figure 2: Rainfall percentiles since January 2017 (compared to 1900–2019 long-term average) (Jan 2017 to Nov 2020)

Note: Rainfall percentiles for the period from January 2017 are shown as the Bureau of Meteorology considers January 2017 to be the start of the current dry period for eastern Australia.

How much water is in the storages?

Storage volume: Lake Bellfield, Lake Fyans, Lake Lonsdale, Moora, Rocklands, Taylor Lake, Toolondo and Wartook storages as at 15 December 2020

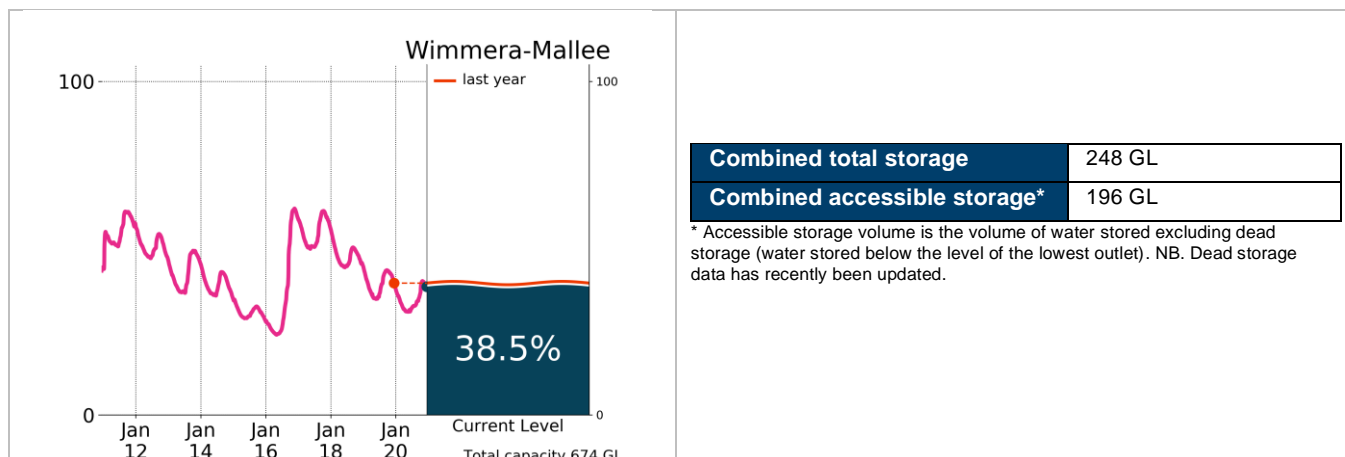


Figure 3: Current total storage (% of total capacity) compared to the last ten years

Source: [BoM water storages dashboard](#)

Who is the water for?

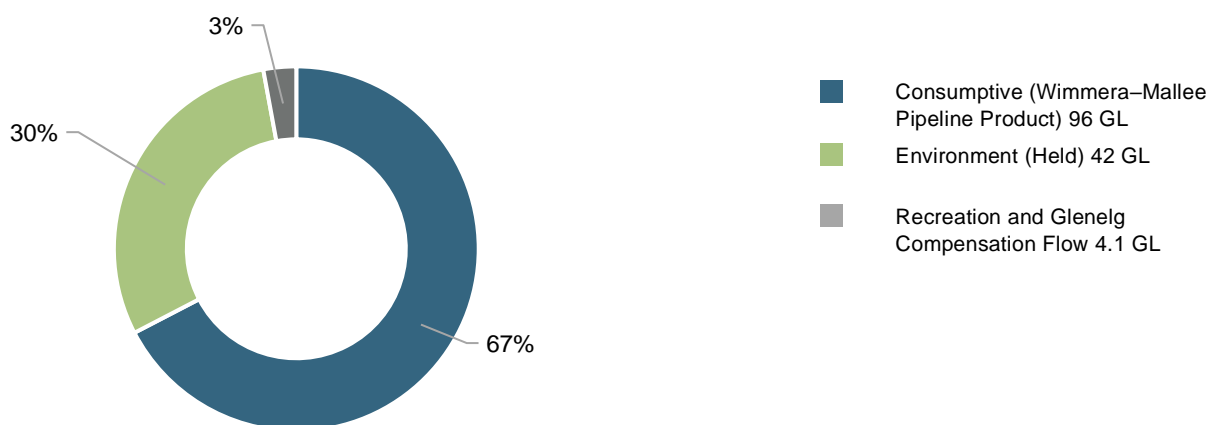


Figure 4: Volumes of water available, including carryover (% of total) (as at 1 December 2020)

Source: [GWMWater](#)

Table 1: Allocation announcements (%) and market prices – selected licence categories as at 15 December 2020

Licence category	Announced allocation	Historic comparison (same time of year)	Entitlement prices (monthly median)	Allocation price (median – last 7 days)
Wimmera-Mallee Pipeline Product	50%	Similar to last year	n/a	n/a

Source: [GWMWater](#) and [BoM water markets dashboard](#)

FIND OUT MORE

For more information email water@bom.gov.au



With the exception of logos, photography and data referenced as being from other organisations, this publication is licensed under a Creative Commons Attribution 3.0 Australia Licence. The terms and conditions of the licence are available at <http://creativecommons.org/licenses/by/3.0/au>. Attribution for this publication should be: © Commonwealth of Australia (Bureau of Meteorology) 2020.