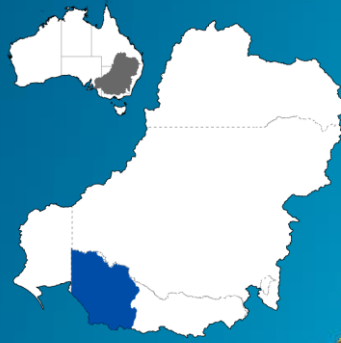




# Water Reporting Summary – Wimmera–Mallee Catchment

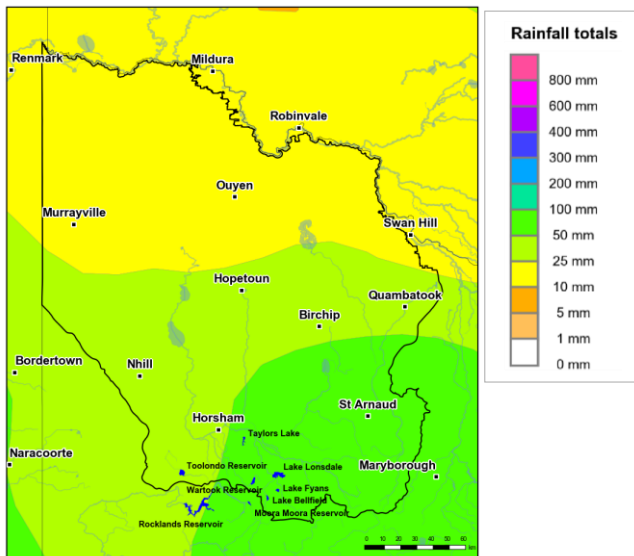
15 February 2021



## Overview

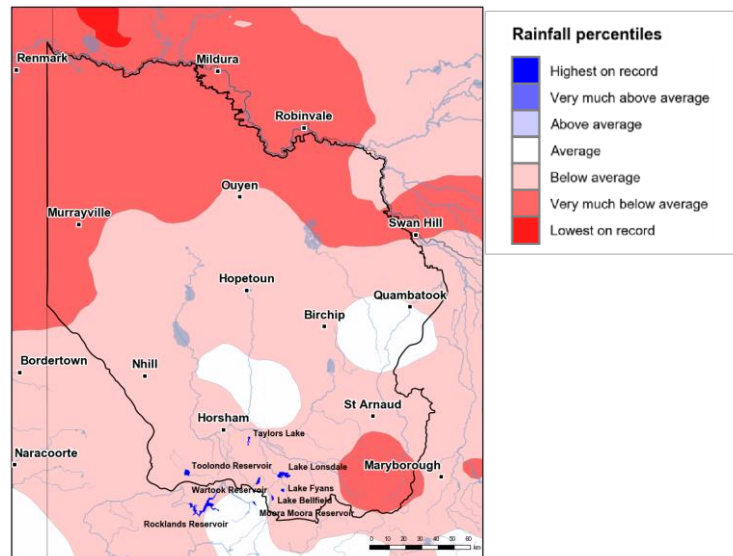
- In the last month, downstream areas of the Wimmera–Mallee catchment received 10 to 25 mm of rainfall. Central areas of the catchment received 25 to 50 mm while upstream areas near Toolondo Reservoir and Lake Bellfield received up to 100 mm (Figure 1). The total area-average rainfall for the catchment was 36 mm, with most of this rainfall received in the last week of January. This recent rainfall is in the context of the extended dry period since January 2017 with rainfall for the central Wimmera–Mallee catchment being average or below average, and the remainder of the catchment being mainly very much below average (Figure 2).
- The rainfall in the last month has resulted in average root zone soil moisture for the most of Wimmera–Mallee catchment. Recent rainfall has not translated into significant runoff and inflows into storages (Figure 3). Allocations for Wimmera–Mallee Pipeline Product entitlement holders are currently 56% (a 4% increase since January) (Figure 4 and Table 1) (GMMWater Storage Manager).

## Recent conditions



<http://www.bom.gov.au>  
© Commonwealth of Australia 2021, Bureau of Meteorology

Figure 1: Rainfall totals for the last 30 days  
(17 Jan to 15 Feb 2021)



<http://www.bom.gov.au>  
© Commonwealth of Australia 2021, Bureau of Meteorology

Figure 2: Rainfall percentiles since January 2017 (compared to 1900–2019 long-term average) (Jan 2017 to Jan 2021)

Note: Rainfall percentiles for the period from January 2017 are shown as the Bureau of Meteorology considers January 2017 to be the start of the current dry period for eastern Australia.

## How much water is in the storages?

**Storage volume:** Lake Bellfield, Lake Fyans, Lake Lonsdale, Moora, Rocklands, Taylor Lake, Toolondo and Wartook storages as at 2 February 2021

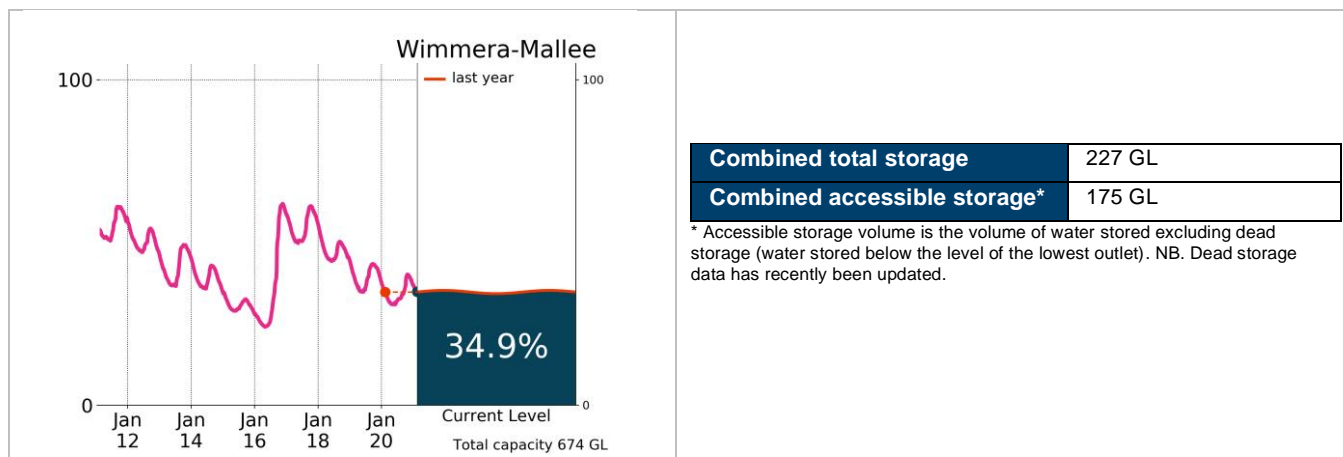


Figure 3: Current total storage (% of total capacity) compared to the last ten years

Source: [BoM water storages dashboard](#)

## Who is the water for?

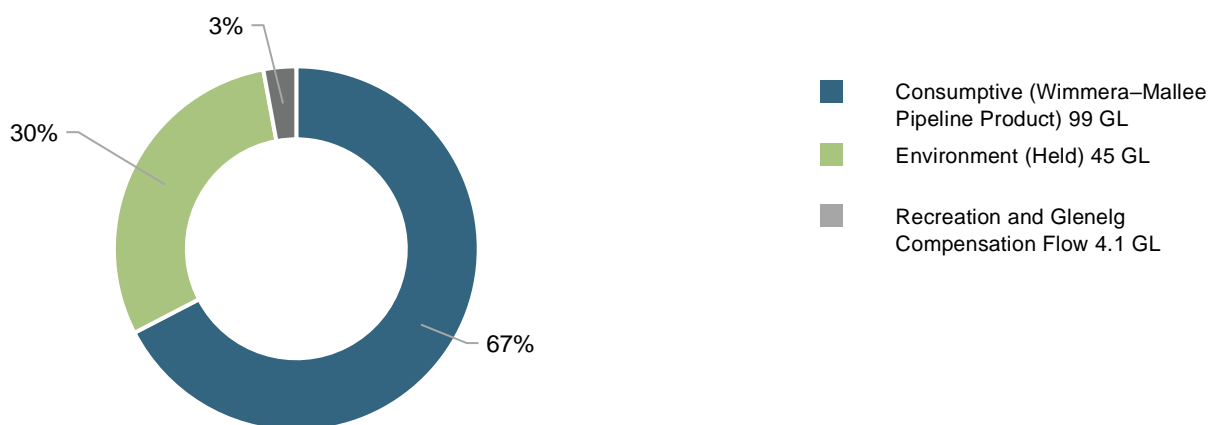


Figure 4: Volumes of water available, including carryover (% of total) (last updated 4 February 2021)

Source: [GWMWater](#)

Table 1: Allocation announcements (%) and market prices – selected licence categories as at 15 February 2021

Licence category	Announced allocation	Historic comparison (same time of year)	Entitlement prices (monthly median)	Allocation price (median – last 7 days)
Wimmera-Mallee Pipeline Product	56%	Similar to last year	n/a	n/a

Source: [GWMWater](#) and [BoM water markets dashboard](#)

FIND OUT MORE

For more information email [water@bom.gov.au](mailto:water@bom.gov.au)



With the exception of logos, photography and data referenced as being from other organisations, this publication is licensed under a Creative Commons Attribution 3.0 Australia Licence. The terms and conditions of the licence are available at <http://creativecommons.org/licenses/by/3.0/au>. Attribution for this publication should be: © Commonwealth of Australia (Bureau of Meteorology) 2021.