



Water Reporting Summary – Goulburn Catchment

15 March 2021

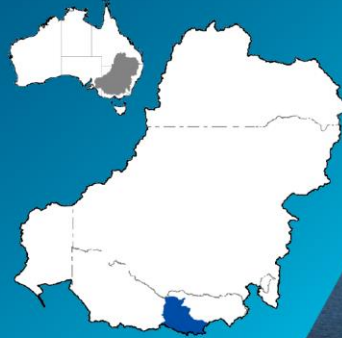
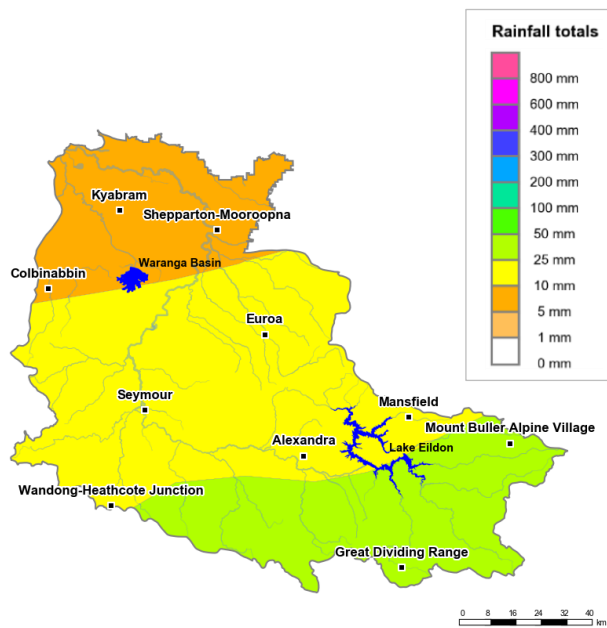


Photo: Goulburn River August 2018 by Nils Versemann

Overview

- In the last 30 days, central areas of the Goulburn catchment received 10 to 25 mm of rainfall, with the Great Dividing Range in the upper Goulburn receiving up to 50 mm. In contrast, downstream areas near Shepparton and Kyabram received less than 10 mm of rainfall (Figure 1). The area-average rainfall for the catchment was 20 mm, with almost all this rain received in the second week of March. In parts of the catchment, recent rainfall has offset the rainfall deficiency experienced over the last four years. Rainfall from January 2017 to February 2021 is now considered to be average or below average for most of the Goulburn catchment (Figure 2). However, areas near Shepparton and Alexandra have received very much below average rainfall during this period.
- The recent rainfall has helped to maintain average root zone soil moisture conditions for downstream areas of the catchment and above average soil moisture for most central and upstream areas. Rainfall received in the last month has translated into some runoff and inflow into storages (Figure 3). Announced allocations for high-reliability water shares are currently 100% (Table 1). This is 22% higher than the same time last year.
- Allocation prices are currently \$100 per ML, which is the same as prices paid last month and significantly lower than the same time last year (\$450 per ML) (Table 1).

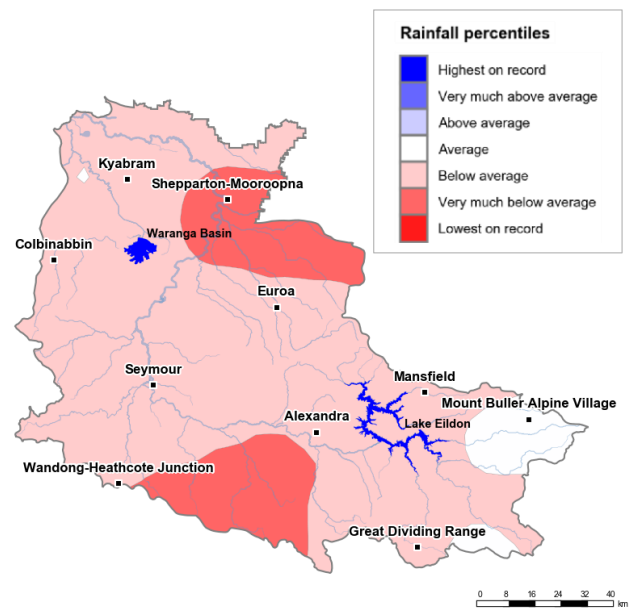
Recent conditions



<http://www.bom.gov.au>

© Commonwealth of Australia 2021, Bureau of Meteorology

Figure 1: Rainfall totals for the last 30 days (14 Feb to 15 March 2021)



<http://www.bom.gov.au>

© Commonwealth of Australia 2021, Bureau of Meteorology

Figure 2: Rainfall percentiles since January 2017 (compared to 1900–2019 long-term average) (Jan 2017 to Feb 2021)

Note: Rainfall percentiles for the period from January 2017 are shown as the Bureau of Meteorology considers January 2017 to be the start of the current dry period for eastern Australia.

How much water is in the storages?

Storage volume: Eildon and Waranga basin storages as at 14 March 2021

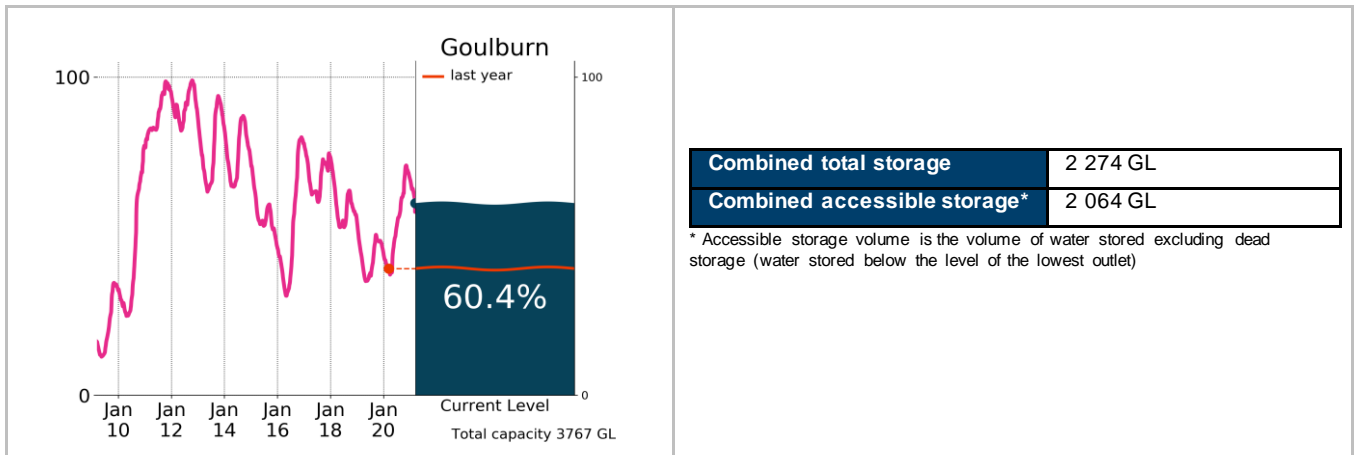


Figure 3: Current total storage (% of total capacity) compared to the last ten years

Source: [BoM water storages dashboard](#)

Who is the water for?

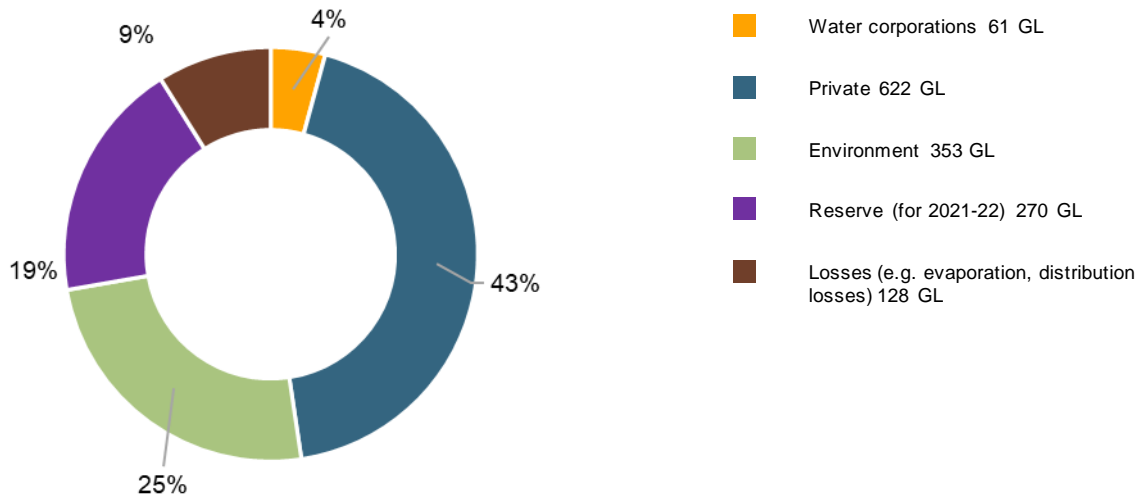


Figure 4: Volumes of water allocations currently available/remaining (% of total remaining) (as at 15 March 2021)

Source: [Northern Victoria Resource Manager](#)

NB: Allocation information shows water available in allocation accounts and remaining commitments at 15 March 2021. Information published by the Northern Victoria Resource Manager differs from information published on the Victorian Water Register as the former includes preliminary environmental water holder use and volumes of operational use by Goulburn-Murray Water private water shareholders.

Table 1: Allocation announcements (%) and market prices – selected licence categories as at 15 March 2021

Licence category	Announced allocation	Historic comparison (same time of year)	Entitlement prices (monthly median)	Allocation price (median – last 7 days)
VIC Goulburn High-Reliability Water Share	100%	22% higher than same time last year	\$4 000/ML	\$100/ML
VIC Goulburn Low-Reliability Water Share	0%	Same as most years	\$400/ML	

Source: [Victorian Water Register](#) and [BoM water markets dashboard](#)

FIND OUT MORE

For more information email water@bom.gov.au



With the exception of logos, photography and data referenced as being from other organisations, this publication is licensed under a Creative Commons Attribution 3.0 Australia Licence. The terms and conditions of the licence are available at <http://creativecommons.org/licenses/by/3.0/au>. Attribution for this publication should be: © Commonwealth of Australia (Bureau of Meteorology) 2021.