



Water Reporting Summary – Macquarie–Castlereagh Catchment

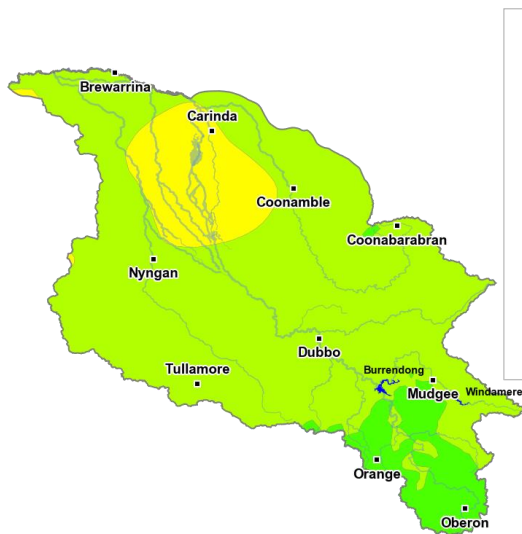
15 October 2020



Overview

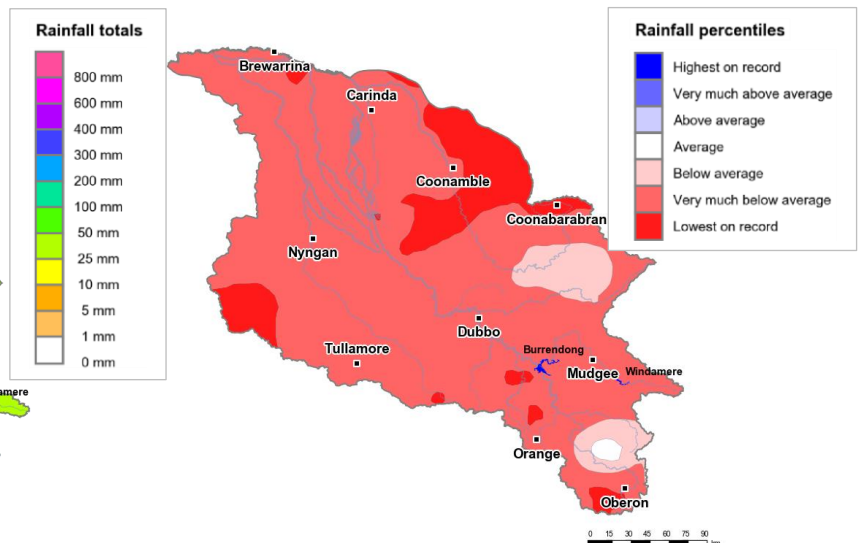
- In the last 30 days, there was widespread rainfall across the Macquarie–Castlereagh catchment, with upstream areas including the Burrendong Dam catchment, receiving 50 to 100 mm of rainfall. The rest of the catchment received 25 to 50 mm, with the exception of an area near Carinda which received less than 25 mm of rainfall (Figure 1). The total area-average rainfall for the catchment was 35 mm, with most of this rain received in the last two weeks of September. Rainfall in the last month is in the context of the extended dry period since January 2017 with rainfall across the Macquarie–Castlereagh catchment being mainly very much below average or lowest on record (Figure 2).
- The recent rainfall has helped to maintain mainly above average root zone soil moisture conditions and has translated into some runoff and inflows into storages (Figure 3). The improvement in water resources allowed an allocation of 18% to be made to general security entitlement holders, an increase of 6% since September. For this time of year, this is the highest allocation since 2017–18 (NSW DPIE) (Figure 4 and Table 1).
- Allocation prices are currently \$200 per ML which is the same as prices paid last month (Table 1).

Recent conditions



<http://www.bom.gov.au>
© Commonwealth of Australia 2020, Bureau of Meteorology

Figure 1: Rainfall totals for the last 30 days
(16 Sept to 15 Oct 2020)



<http://www.bom.gov.au>
© Commonwealth of Australia 2020, Bureau of Meteorology

Figure 2: Rainfall percentiles since January 2017 (compared to 1900–2019 long-term average) (Jan 2017 to Sept 2020)

Note: Rainfall percentiles for the period from January 2017 are shown as the Bureau of Meteorology considers January 2017 to be the start of the current dry period for eastern Australia.

How much water is in the storages?

Storage volume: Burrendong, Windamere storages as at 15 October 2020

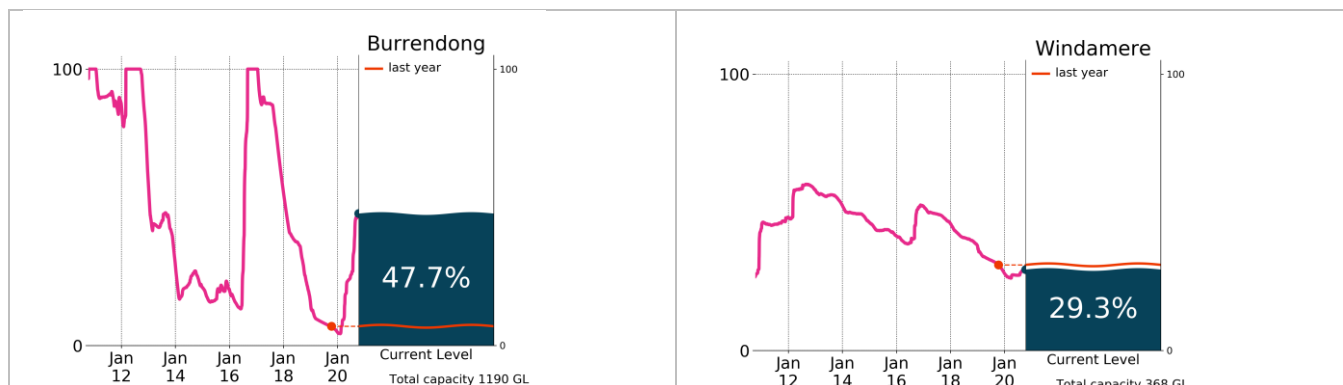


Figure 3: Current total storage (% of total capacity) compared to the last ten years

Source: [BoM water storages dashboard](#)

Who is the water for?

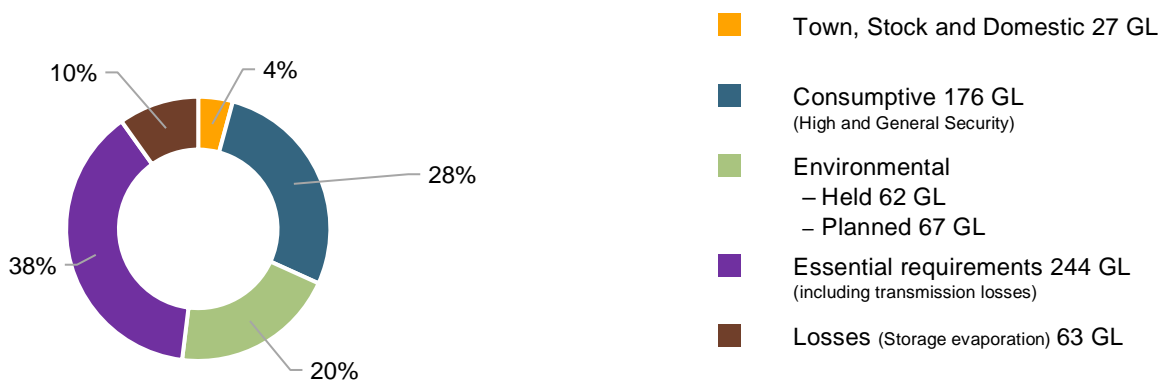


Figure 4: Volumes of water allocated (% of total) for the 2020–22 water years (as at 13 October 2020)

Source: [NSW Department of Planning, Industry and Environment](#)

NB: Allocation information shown here is water allocated for various purposes from the Macquarie and Cudgegong regulated river sources within the Macquarie–Castlereagh catchment as at 13 October 2020. It does not represent remaining available allocated water as it does not allow for water used, traded or new storage inflows (in excess of minimum assumptions).

Table 1: Allocation announcements (%) and market prices – selected licence categories as at 15 October 2020

Licence category	Announced allocation	Historic comparison (same time of year)	Entitlement prices (monthly median)	Allocation price (median – last 7 days)
Stock & Domestic	100%	Same as most years	n/a	\$200/ML*
High Security	100%	Same as most years	n/a	
General Security	18%	Highest allocation since 2017–18	\$1 825/ML*	
Average Carryover (General Security)	8% currently available	1.6 % available last year	n/a	

*Indicative - limited trades

Source: [NSW Department of Planning, Industry and Environment](#) and [BoM water markets dashboard](#)

FIND OUT MORE

For more information email water@bom.gov.au



With the exception of logos, photography and data referenced as being from other organisations, this publication is licensed under a Creative Commons Attribution 3.0 Australia Licence. The terms and conditions of the licence are available at <http://creativecommons.org/licenses/by/3.0/au>. Attribution for this publication should be: © Commonwealth of Australia (Bureau of Meteorology) 2020.