



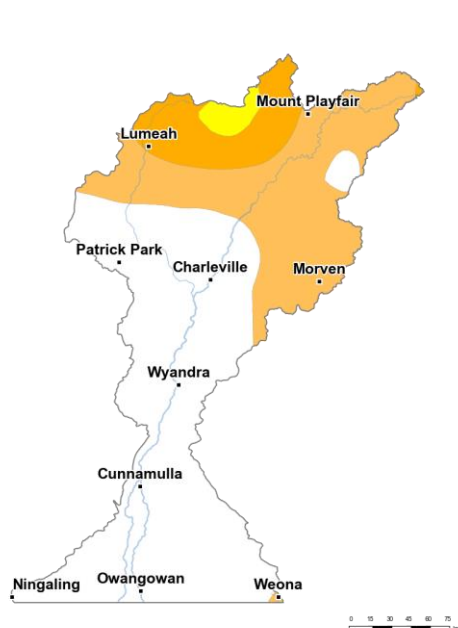
# Water Reporting Summary - Warrego Catchment

15 September 2020

## Overview

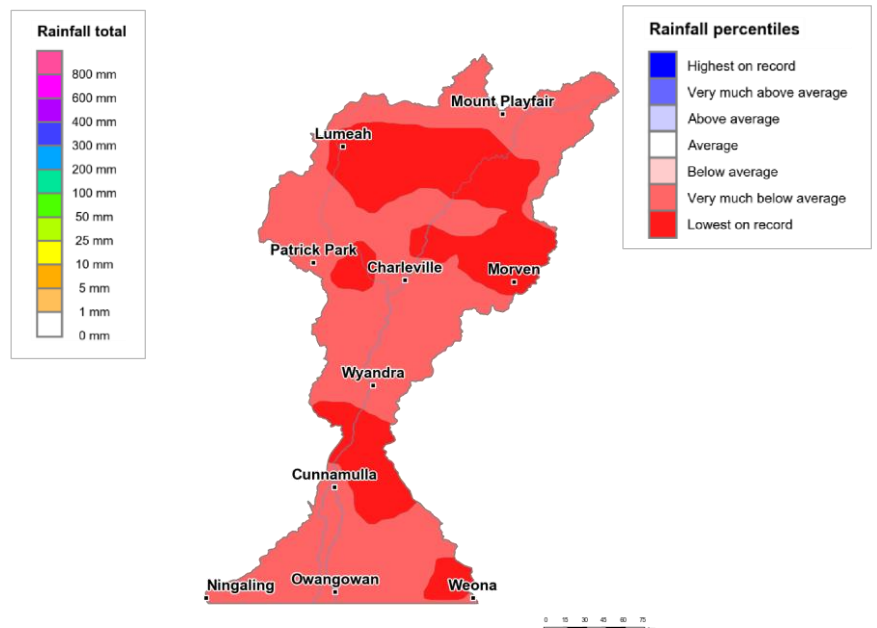
- In the last 30 days, most of the Warrego catchment received no rainfall. Some upstream areas of the catchment received 1 to 5 mm, although the area near Mount Playfair and Lumeah received up to 25 mm (Figure 1). As a result, the total area-average rainfall across the catchment was 2 mm over the last 30 days. This limited rainfall is in the context of the extended dry period since January 2017 with rainfall across the Warrego catchment mainly very much below average or lowest on record (Figure 2).
- With only limited recent rainfall, root zone soil moisture was average or below average for most of the Warrego catchment for September to date. Soils have continued to dry out following significant rainfall, flooding and very wet soils in February and March. The drying of the catchment has reduced runoff and inflows into storages over the past 30 days (Table 1).
- Announced allocations for medium priority entitlements in the Cunnamulla water supply scheme (WSS) in the Warrego catchment have opened the 2020-21 water year at 67%. This is the fourth lowest opening allocation in the last ten years (Figure 4 and Table 2).

## Recent conditions



<http://www.bom.gov.au>  
© Commonwealth of Australia 2020, Bureau of Meteorology

Figure 1: Rainfall totals for the last 30 days (17 Aug to 15 Sept 2020)



<http://www.bom.gov.au>  
© Commonwealth of Australia 2020, Bureau of Meteorology

Figure 2: Rainfall percentiles since January 2017 (Compared to 1900-2019 long-term average) (Jan 2017 to Aug 2020)

Note: Rainfall percentiles for the period from January 2017 are shown as the Bureau of Meteorology considers January 2017 to be the start of the current dry period for eastern Australia.

## How much water is in the storages?

Table 1: Storage volume as at 15 September 2020

Water Supply Scheme	Cunnamulla
Storage	Allan Tannock Weir
Total storage (% Full)	84.6%

Source: [Sunwater](#)

## Who is the water for?

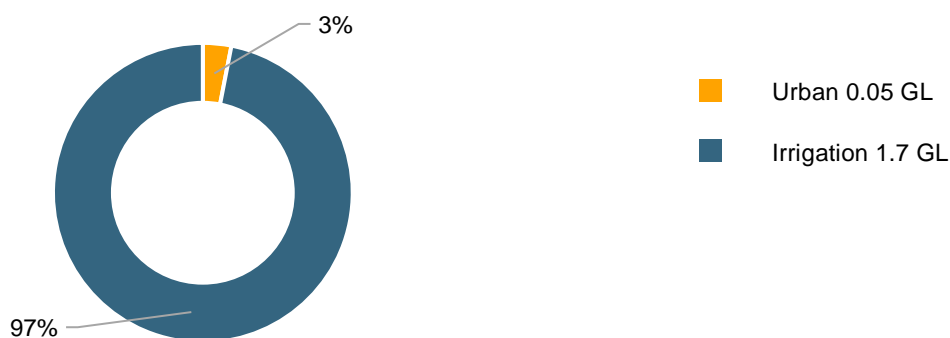


Figure 4: Volumes of water allocated (% of total) for the 2020-21 water year, supplemented schemes (last updated 1 July 2020)

Source: [Sunwater](#) and [BoM water markets dashboard](#)

NB: Allocation information shown here is water allocated in the Cunnamulla supplemented scheme for various purposes as at 1 July 2020. It does not include unsupplemented entitlements. The information also does not represent remaining available allocated water as it does not allow for water used, traded or new storage inflows (in excess of minimum assumptions).

Table 2: Allocation announcements (%) – Selected licence categories (last updated 1 July 2020)

Licence category	Announced allocation	Historic comparison (same time of year)
Cunnamulla WSS Medium Priority	67%	Fourth lowest opening allocations in last ten years

Source: [Sunwater](#)

FIND OUT MORE

For more information email [water@bom.gov.au](mailto:water@bom.gov.au)



With the exception of logos, photography and data referenced as being from other organisations, this publication is licensed under a Creative Commons Attribution 3.0 Australia Licence. The terms and conditions of the licence are available at <http://creativecommons.org/licenses/by/3.0/au>. Attribution for this publication should be: © Commonwealth of Australia (Bureau of Meteorology) 2020.