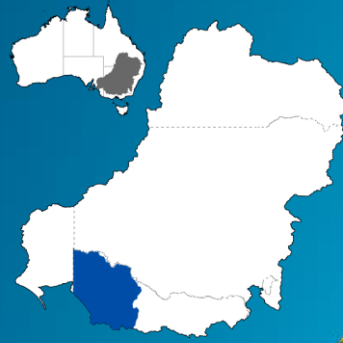




# Water Reporting Summary - Wimmera-Mallee Catchment

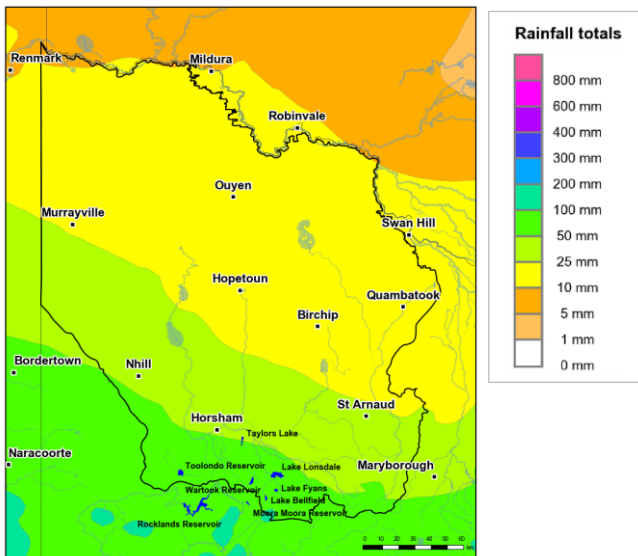
15 September 2020



## Overview

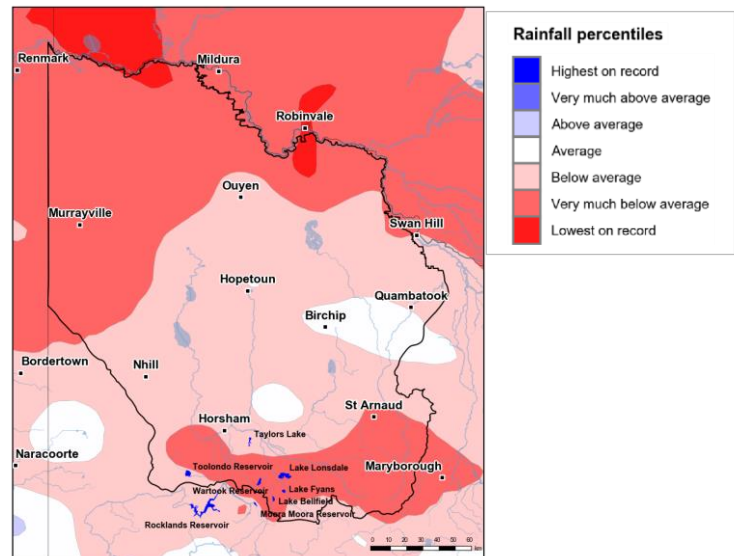
- In the last month, the northern half of the Wimmera-Mallee catchment received 10 to 25 mm of rainfall. In the south, areas near Nhill and Horsham received 25 to 50mm, while areas near Toolondo Reservoir, Lake Lonsdale, Lake Fyans and Lake Bellfield received up to 100 mm of rainfall (Figure 1). The total area-average rainfall for the catchment was 27 mm. This recent patchy rainfall is in the context of the extended dry period since January 2017 with rainfall for the central Wimmera-Mallee catchment being average or below average, and the remainder of the catchment being mainly very much below average (Figure 2).
- Low recent rainfall in the northern and central areas of the Wimmera-Mallee catchment has resulted in drier soil with average and below average root zone soil moisture for September to date. Even where more rainfall was received in the southern areas of the catchment, soil moisture is still below average following below average soil moisture during July and August. A drier catchment has meant recent rainfall near storages has only translated into limited runoff and inflows into storages (Figures 3 and 4).
- Seasonal allocations are currently 9%, with water currently available to entitlement holders mainly related to carryover from the 2019-20 water year (Table 1) (GWMWater Storage Manager).

## Recent conditions



<http://www.bom.gov.au>  
© Commonwealth of Australia 2020, Bureau of Meteorology

Figure 1: Rainfall totals for the last 30 days  
(17 Aug to 15 Sept 2020)



<http://www.bom.gov.au>  
© Commonwealth of Australia 2020, Bureau of Meteorology

Figure 2: Rainfall percentiles since January 2017 (Compared to 1900-2019 long-term average) (Jan 2017 to Aug 2020)

Note: Rainfall percentiles for the period from January 2017 are shown as the Bureau of Meteorology considers January 2017 to be the start of the current dry period for eastern Australia.

## How much water is in the storages?

**Storage volume:** Lake Bellfield, Lake Fyans, Lake Lonsdale, Moora Moora, Rocklands, Taylor Lake, Toolondo and Wartook storages as at 8 September 2020

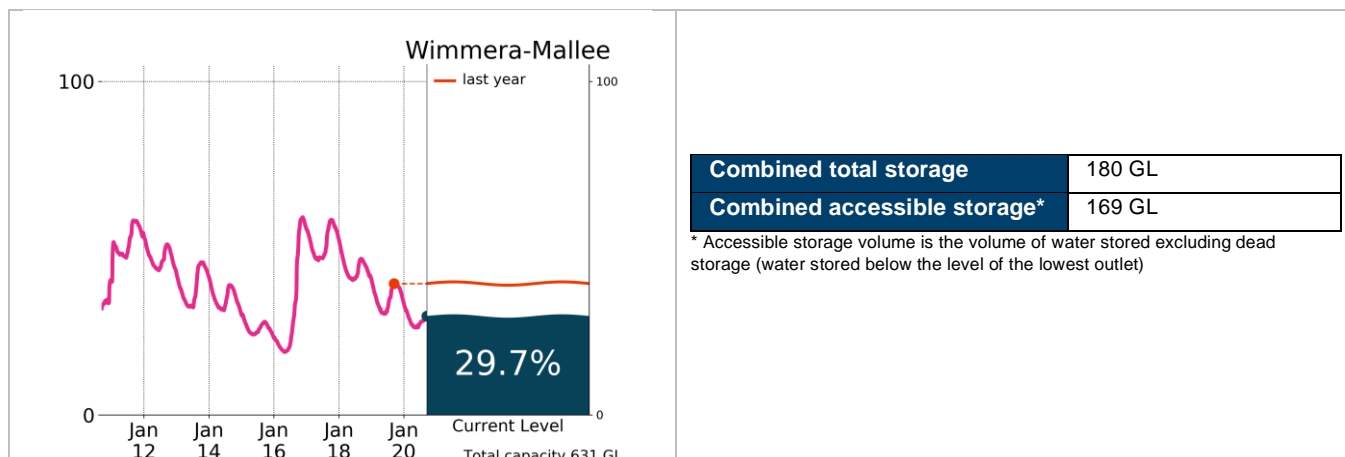


Figure 3: Current total storage (% of total capacity) compared to the last ten years

Source: [BoM water storages dashboard](#)

## Who is the water for?

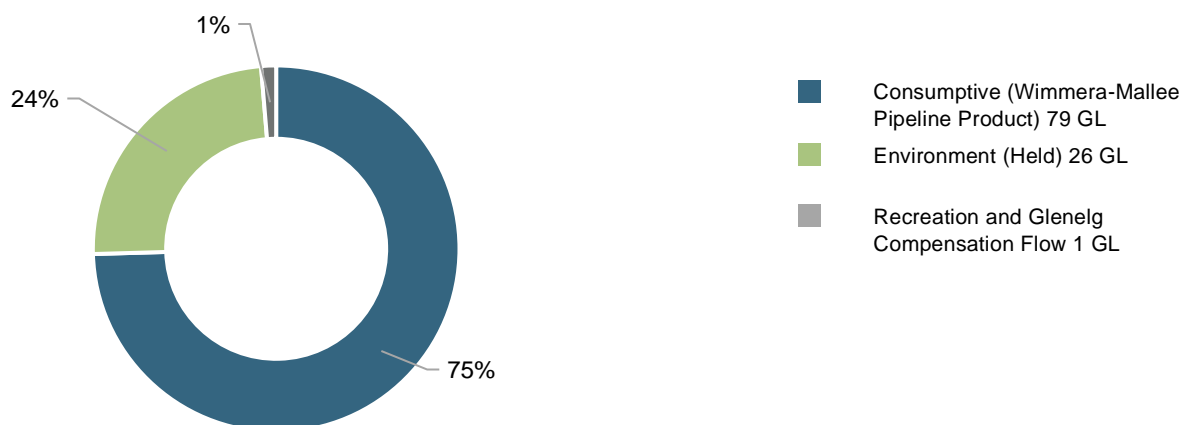


Figure 4: Volumes of water available, including carryover (% of total) (as at 2 September 2020)

Source: [GWMWater](#)

Table 1: Allocation announcements (%) and market prices – Selected licence categories as at 15 September 2020

Licence category	Announced allocation	Historic comparison (same time of year)	Entitlement Prices (monthly median)	Allocation Price (median - last 7 days)
Wimmera-Mallee Pipeline Product	9%	Similar to last year	n/a	n/a

Source: [GWMWater](#) and [BoM water markets dashboard](#)

FIND OUT MORE

For more information email [water@bom.gov.au](mailto:water@bom.gov.au)



With the exception of logos, photography and data referenced as being from other organisations, this publication is licensed under a Creative Commons Attribution 3.0 Australia Licence. The terms and conditions of the licence are available at <http://creativecommons.org/licenses/by/3.0/au>. Attribution for this publication should be: © Commonwealth of Australia (Bureau of Meteorology) 2020.