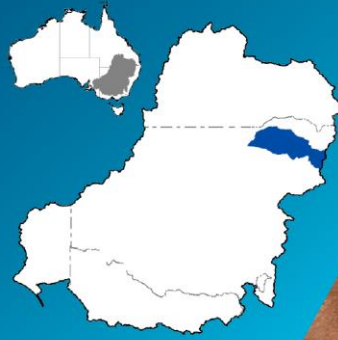




Water Reporting Summary – Gwydir Catchment

16 November 2020



Overview

- In the last 30 days, there was widespread rainfall across the Gwydir catchment. Upper and central catchment areas received 50 to 100 mm of rainfall, with a small area south-west of Upper Horton receiving up to 200 mm. In contrast, most of the lower catchment received 25 to 50 mm of rainfall, with areas near Weemelah receiving less than 25 mm (Figure 1). The total area-average rainfall across the catchment was 62 mm in the last 30 days. This recent rainfall is in the context of the extended dry period since January 2017 with rainfall across the Gwydir catchment mainly being very much below average or lowest on record (Figure 2).
- Rainfall received in the last 30 days has maintained average to above average root zone soil moisture conditions across the Gwydir catchment. However, this has not translated into significant runoff and inflows to Copeton Dam, with Drought Stage 2 conditions continuing for the Gwydir catchment (Figure 3). In Drought Stage 2 (emerging drought or drought recovery), there has been limited water resources and multiple years of low flows (NSW DPIE).
- General security allocations are currently 5.07% which are the highest allocations for the last three years. Limited water availability has translated into limited water trading activity in the Gwydir catchment (Figure 4 and Table 1).

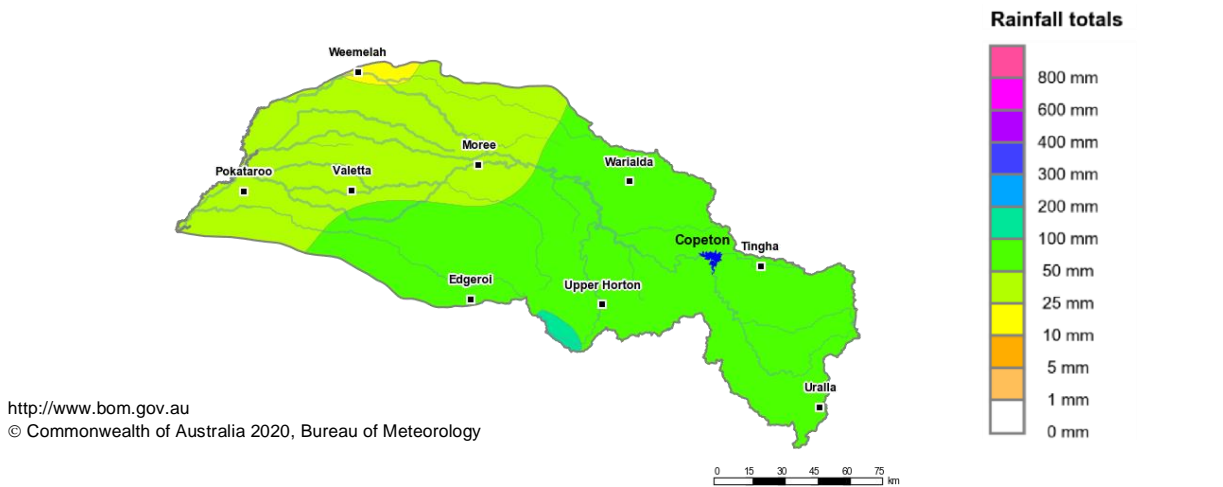


Figure 1: Rainfall totals for the last 30 days (18 Oct to 16 Nov 2020)

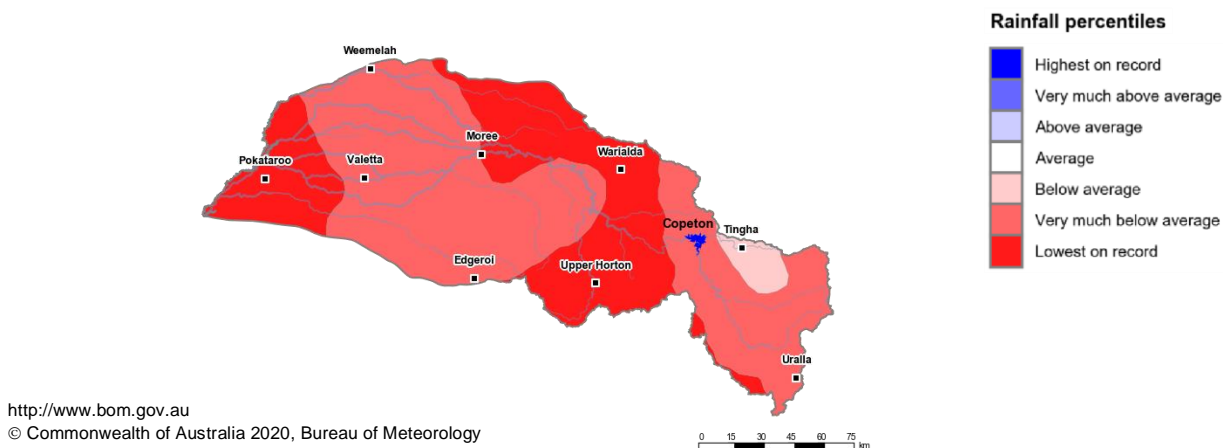


Figure 2: Rainfall percentiles since January 2017 (compared to 1900–2019 long-term average) (Jan 2017 to Oct 2020)

Note: Rainfall percentiles for the period from January 2017 are shown as the Bureau of Meteorology considers January 2017 to be the start of the current dry period for eastern Australia.

How much water is in the storage?

Storage volume: Copeton storage as at 16 November 2020

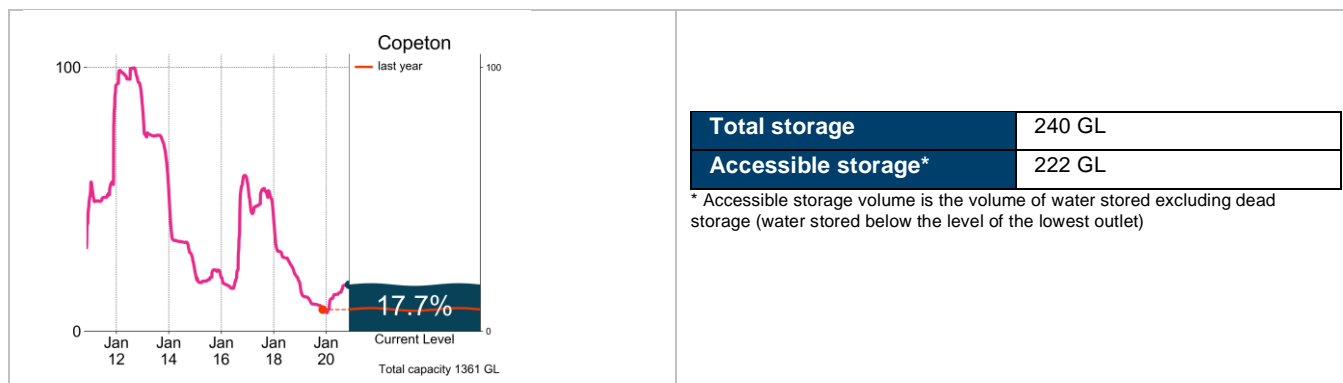


Figure 3: Current total storage (% of total capacity) compared to the last ten years

Source: [BoM water storages dashboard](#)

Who is the water for?

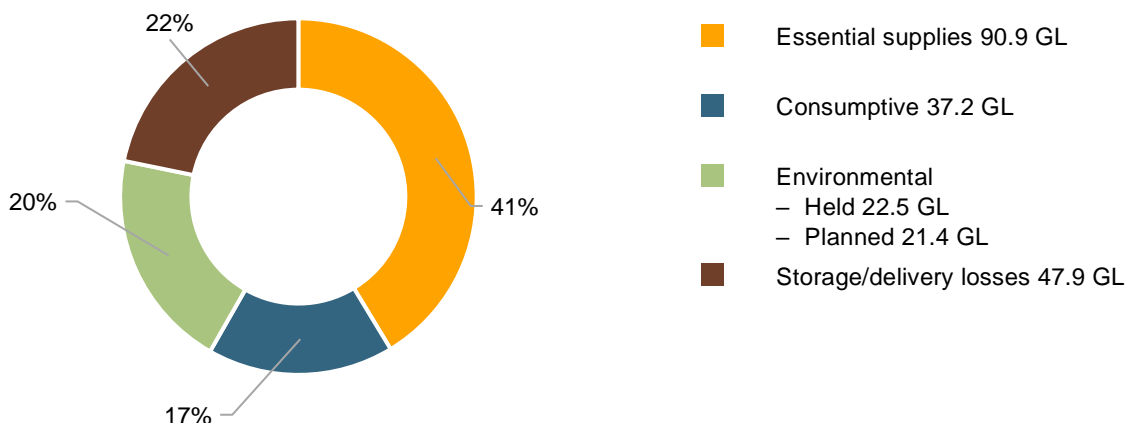


Figure 4: Volumes of water allocated (% of total) for the 2020–21 water year (last updated 31 October 2020)

Source: [NSW Department of Planning, Industry and Environment](#)

NB: Allocation information shown here is water allocated for various purposes as at 31 October 2020. It does not represent remaining available allocated water as it does not allow for water used, traded or new storage inflows (in excess of minimum assumptions).

Table 1: Allocation announcements (%) and market prices – selected licence categories as at 16 November 2020

| Licence category | Announced allocation | Historic comparison (same time of year) | Entitlement prices (monthly median) | Allocation price (median – last 7 days) |
|--------------------------------------|----------------------|---|-------------------------------------|---|
| Stock & Domestic, Local Utility | 100% | Same as most years | n/a | n/a |
| Gwydir High Security | 100% | Same as most years | n/a | |
| Gwydir General Security | 5.07% | Highest allocations in last three years | n/a | |
| Average Carryover (General Security) | 5% | 3% last year | n/a | |

*Indicative - limited trades

Source: [NSW Department of Planning, Industry and Environment](#) and [BoM water markets dashboard](#)

FIND OUT MORE

For more information email water@bom.gov.au



With the exception of logos, photography and data referenced as being from other organisations, this publication is licensed under a Creative Commons Attribution 3.0 Australia Licence. The terms and conditions of the licence are available at <http://creativecommons.org/licenses/by/3.0/au>. Attribution for this publication should be: © Commonwealth of Australia (Bureau of Meteorology) 2020.