



# Water Reporting Summary – Queensland Border Rivers Catchment

16 November 2020



## Overview

- In the last 30 days, most of the upper Queensland Border Rivers catchment, including the Coolmunda and Glenlyon Dam catchment areas received 50 to 100 of rainfall. In contrast, other areas of the catchment received 25 to 50 mm of rainfall, with areas near Talwood receiving 10 to 25 mm (Figure 1). As a result, the total area-average rainfall across the catchment was 48 mm over the last 30 days. This recent rainfall is in the context of the extended dry period since January 2017 with rainfall across most of the Queensland Border Rivers catchment being lowest on record (Figure 2).
- The recent rainfall has maintained average root zone soil moisture across most of the catchment but has not translated into significant runoff and inflows into storages. (Figure 3). Low storage volumes have resulted in allocations to bulk share medium priority entitlement holders in the Macintyre Brook Water Supply Scheme (WSS) and the Border Rivers WSS being low (Figure 4).
- Announced allocations for bulk share medium priority entitlements in the Macintyre Brook Water Supply Scheme were 12% as at 1 September 2020 which, for this time of year, is the second lowest in the last ten years. For the Border Rivers Water Supply Scheme, the announced allocation equivalent for medium priority allocations was 4% (as at 30 June 2020) which, for the time of year, is the lowest in the last ten years (Table 1).

## Recent conditions

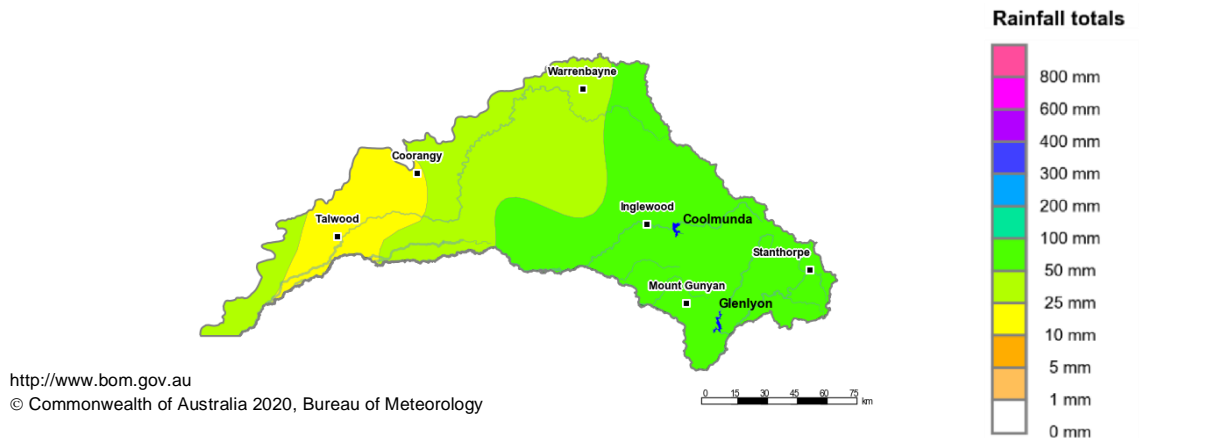


Figure 1: Rainfall totals for the last 30 days (18 Oct to 16 Nov 2020)

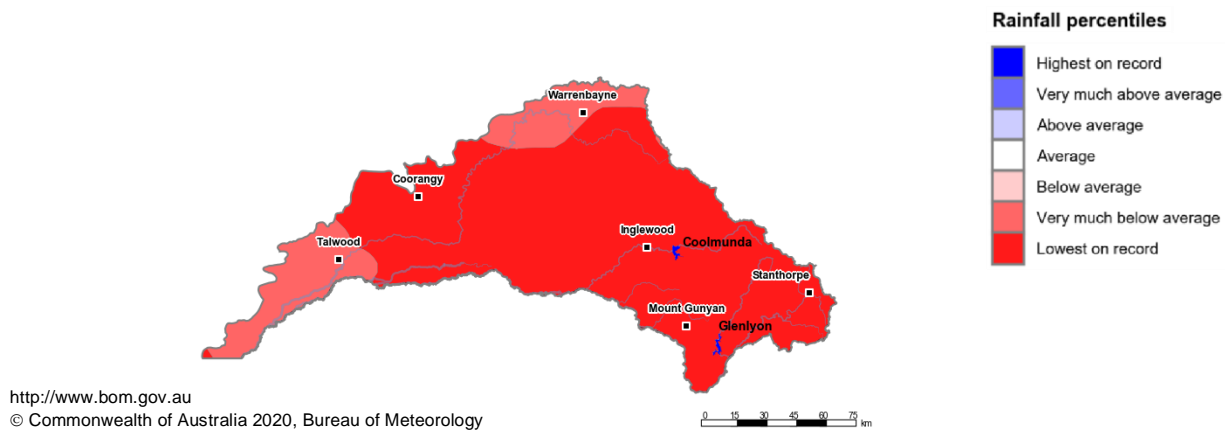


Figure 2: Rainfall percentiles since January 2017 (compared to 1900–2019 long-term average) (Jan 2017 to Oct 2020)

Note: Rainfall percentiles for the period from January 2017 are shown as the Bureau of Meteorology considers January 2017 to be the start of the current dry period for eastern Australia.

# How much water is in the storages?

**Combined total storage (Qld share\*): 54 GL (as at 16 November 2020)**

\*Coolmunda storage and Queensland's 43% share of Glenlyon storage

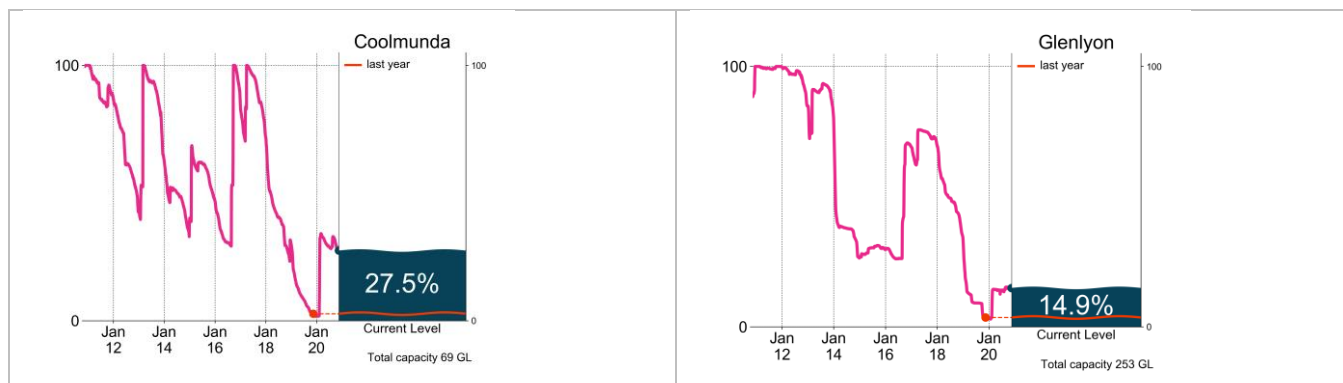


Figure 3: Current total storage (% of total capacity) compared to the last ten years

Source: [BoM water storages dashboard](#)

## Who is the water for?

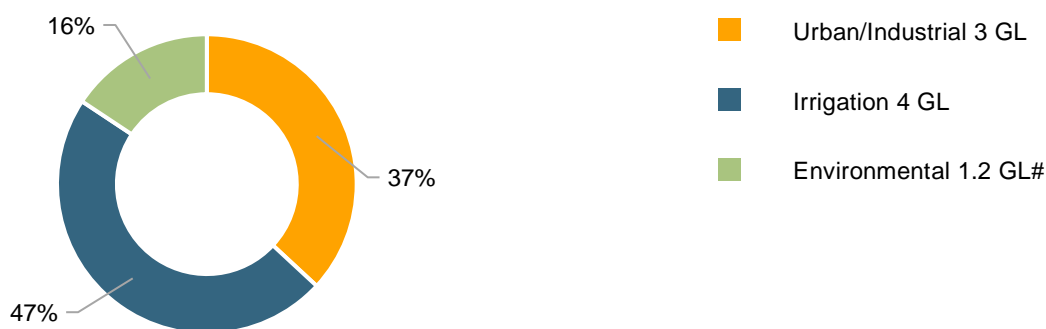


Figure 4: Volumes of water allocated (% of total) for the 2020–21 water year (last updated 1 September 2020)

Source: DNRME, [Sunwater](#) and [BoM water markets dashboard](#)

# Environmental allocations represent water allocations held by the CEWO only as at September 2020 and do not include environmental pass flow requirements in the operation of infrastructure throughout the catchment

NB: Allocation information shown here is water allocated for various purposes in supplemented water supply scheme bulk share as at 1 September 2020. It does not represent remaining available allocated water as it does not allow for water used, traded or new storage inflows (in excess of minimum assumptions).

Table 1: Allocation announcements (%) and market prices – selected licence categories (last updated 1 September 2020)

Licence category	Announced allocation	Historic comparison (same time of year)	Entitlement prices (monthly median)	Allocation price (median – last 7 days)
Macintyre Brook WSS High Priority (Bulk Share)*	100%	Same as most years	n/a	n/a
Macintyre Brook WSS Medium Priority (Bulk Share)*	12%	12% is the second lowest for this time of year in the last ten years	n/a	
Border Rivers WSS High Priority#	100% (last updated 30 June)	Same as most years	n/a	
Border Rivers WSS Medium Priority#	4% (last updated 30 June)	Lowest in the last ten years	n/a	

Source: DNRME, [Sunwater](#) and [BoM water markets dashboard](#)

\* Announced Allocation applies to Bulk Share accounts only. Most water allocations are managed on a continuous accounting basis (capacity share)

# Announced allocation equivalent based on account balances at the start of the water year and resource distributions throughout the water year.

FIND OUT MORE

For more information email [water@bom.gov.au](mailto:water@bom.gov.au)



With the exception of logos, photography and data referenced as being from other organisations, this publication is licensed under a Creative Commons Attribution 3.0 Australia Licence. The terms and conditions of the licence are available at <http://creativecommons.org/licenses/by/3.0/au>. Attribution for this publication should be: © Commonwealth of Australia (Bureau of Meteorology) 2020.