



# Water Reporting Summary – Goulburn Catchment

16 November 2020



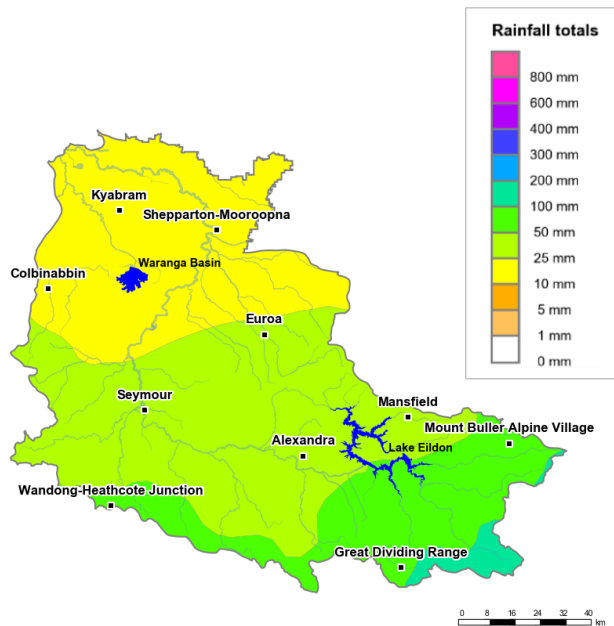
Photo: Goulburn River August 2018 by Nils Versemann



## Overview

- In the last 30 days, the Goulburn catchment received widespread rainfall. The lower Goulburn catchment near Kyabram and Shepparton received 10 to 25 mm of rainfall, while central areas received 25 to 50 mm. The upper Goulburn, including areas upstream of Lake Eildon received 100 to 200 mm of rainfall, with parts of the Great Dividing Range receiving up to 300 mm (Figure 1). The area-average rainfall for the catchment was 39 mm. In parts of the catchment, this recent rainfall has offset the rainfall deficiency experienced over the last three years. Rainfall from January 2017 to October 2020 is now considered to be average or below average for most of the Goulburn catchment (Figure 2). However, areas near Shepparton and Mansfield received very much below average rainfall during this period.
- The recent rainfall has helped to maintain average root zone soil moisture conditions for most of the catchment, apart from the upper Goulburn catchment where soil moisture was above average. Rainfall received in the last month has translated into some runoff and inflow into storages (Figure 3). Announced allocations for high-reliability water shares have now reached 100%, an increase of 7% from 1 November (Figure 4). This is the earliest time in a water year 100% of high-reliability water entitlements has been reached since 2016–17.
- Allocation prices are currently \$105 per ML, which is lower than prices paid in October (\$147 per ML) and significantly lower than the peak of \$700 per ML in January 2020 (Table 1).

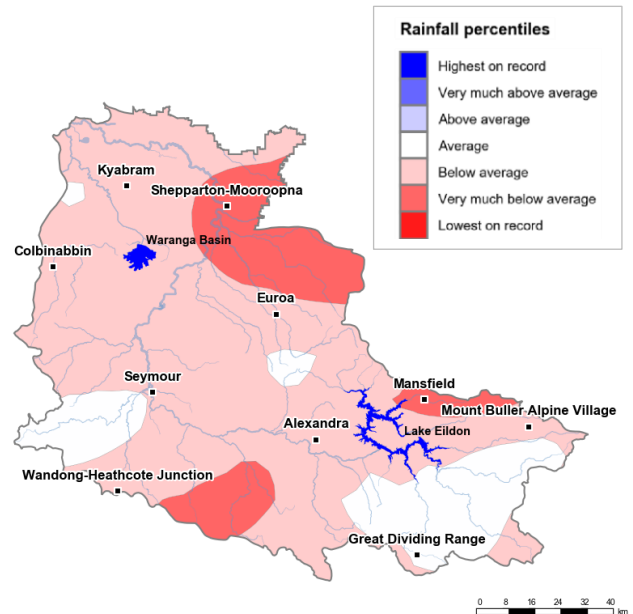
## Recent conditions



<http://www.bom.gov.au>

© Commonwealth of Australia 2020, Bureau of Meteorology

Figure 1: Rainfall totals for the last 30 days (18 Oct to 16 Nov Oct 2020)



<http://www.bom.gov.au>

© Commonwealth of Australia 2020, Bureau of Meteorology

Figure 2: Rainfall percentiles since January 2017 (compared to 1900–2019 long-term average) (Jan 2017 to Oct 2020)

Note: Rainfall percentiles for the period from January 2017 are shown as the Bureau of Meteorology considers January 2017 to be the start of the current dry period for eastern Australia.

## How much water is in the storages?

**Storage volume:** Eildon and Waranga basin storages as at 16 November 2020

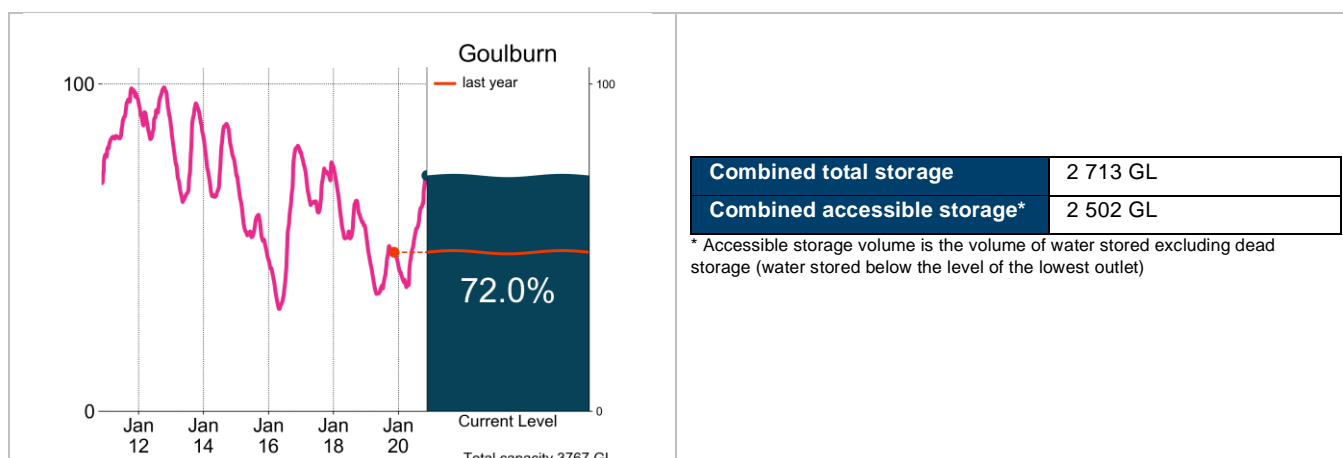


Figure 3: Current total storage (% of total capacity) compared to the last ten years

Source: [BoM water storages dashboard](#)

## Who is the water for?

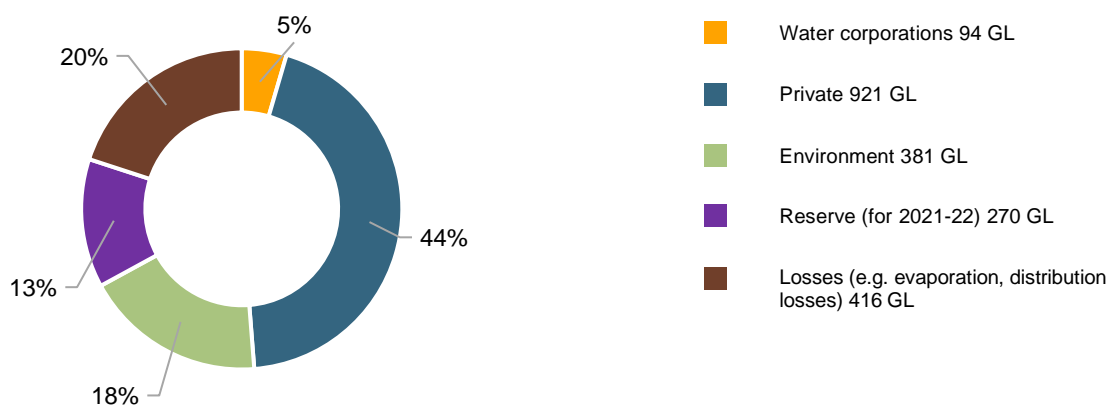


Figure 4: Volumes of water allocations currently available/remaining (% of total remaining) (as at 16 November 2020)

Source: [Northern Victoria Resource Manager](#)

NB: Allocation information shows water available in allocation accounts and remaining commitments at 16 November 2020. Information published by the Northern Victoria Resource Manager differs from information published on the Victorian Water Register as the former includes preliminary environmental water holder use and volumes of operational use by Goulburn-Murray Water private water shareholders.

Table 1: Allocation announcements (%) and market prices – selected licence categories as at 16 November 2020

Licence category	Announced allocation	Historic comparison (same time of year)	Entitlement prices (monthly median)	Allocation price (median – last 7 days)
VIC Goulburn High-Reliability Water Share	100%	Earliest time of year for 100% allocations since 2016–17	\$4 000/ML	\$105/ML
VIC Goulburn Low-Reliability Water Share	0%	Same as most years	\$450/ML	

Source: [Victorian Water Register](#) and [BoM water markets dashboard](#)

FIND OUT MORE

For more information email [water@bom.gov.au](mailto:water@bom.gov.au)



With the exception of logos, photography and data referenced as being from other organisations, this publication is licensed under a Creative Commons Attribution 3.0 Australia Licence. The terms and conditions of the licence are available at <http://creativecommons.org/licenses/by/3.0/au>. Attribution for this publication should be: © Commonwealth of Australia (Bureau of Meteorology) 2020.