



Water Reporting Summary – Goulburn Catchment

17 May 2021

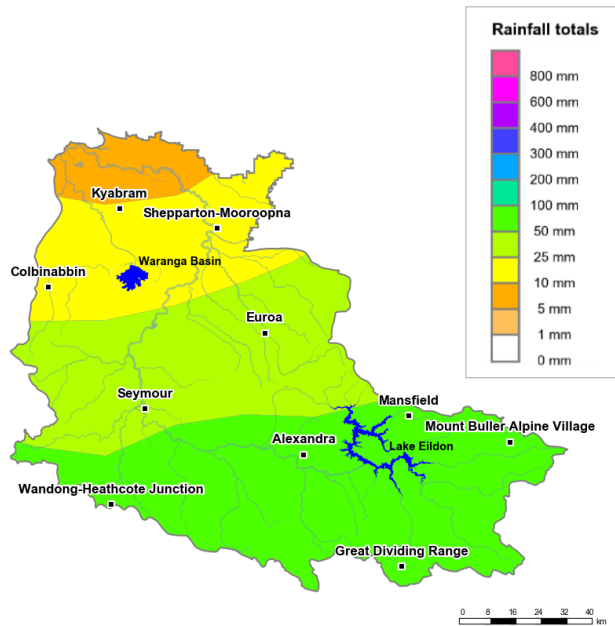


Photo: Goulburn River August 2018 by Nils Versemann

Overview

- In the past month, total rainfall had a decreasing gradient moving downstream in the Goulburn catchment. The upstream areas of the catchment, including the Lake Eildon catchment received 50 to 100 mm of rainfall. Central areas around Euroa and Seymour received 25 to 50 mm of rainfall, while areas downstream of Waranga Basin received 10 to 25 mm. The exception was the area north of Kyabram which received less than 10 mm of rainfall (Figure 1). The area-average rainfall for the catchment was 48 mm, with more than half of this rainfall received in the second week of May. In parts of the catchment, recent rainfall has offset the rainfall deficiency experienced over the last four years. Rainfall from January 2017 to April 2021 is now considered to be average to below average for most of the Goulburn catchment (Figure 2). However, areas near Shepparton and Alexandra have received very much below average rainfall during this period.
- The recent rainfall has helped to maintain average root zone soil moisture conditions across the upstream areas and below average soil moisture for central and downstream areas of the catchment. Rainfall received in the last month has not translated into significant runoff and inflow into storages (Figure 3). Announced allocations for high-reliability water shares are currently 100% (Table 1). This is 20% higher than the same time last year.
- Allocation prices are currently \$95 per ML, which is higher than prices paid last month (\$80 per ML) but well below prices paid at the same time last year (\$210 per ML) (Table 1).

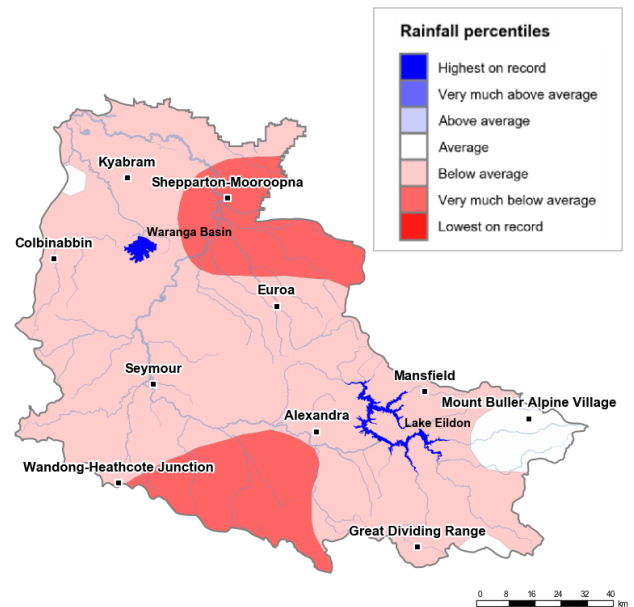
Recent conditions



<http://www.bom.gov.au>

© Commonwealth of Australia 2021, Bureau of Meteorology

Figure 1: Rainfall totals for the last 30 days (18 April to 17 May 2021)



<http://www.bom.gov.au>

© Commonwealth of Australia 2021, Bureau of Meteorology

Figure 2: Rainfall percentiles since January 2017 (compared to 1900–2019 long-term average) (Jan 2017 to April 2021)

Note: Rainfall percentiles for the period from January 2017 are shown as the Bureau of Meteorology considers January 2017 to be the start of the current dry period for eastern Australia.

How much water is in the storages?

Storage volume: Eildon and Waranga basin storages as at 16 May 2021

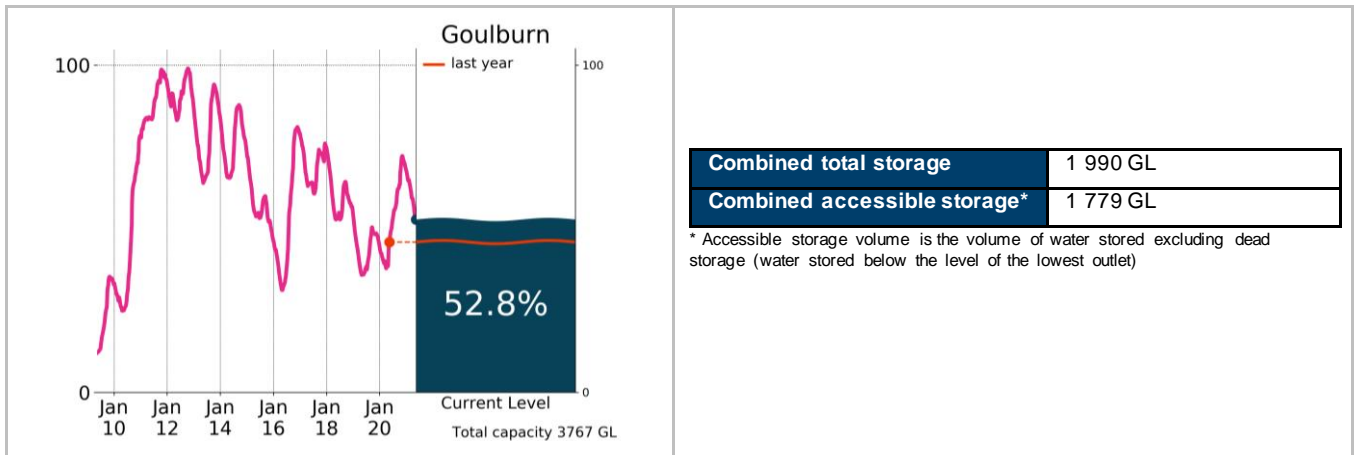


Figure 3: Current total storage (% of total capacity) compared to the last ten years

Source: [BoM water storages dashboard](#)

Who is the water for?

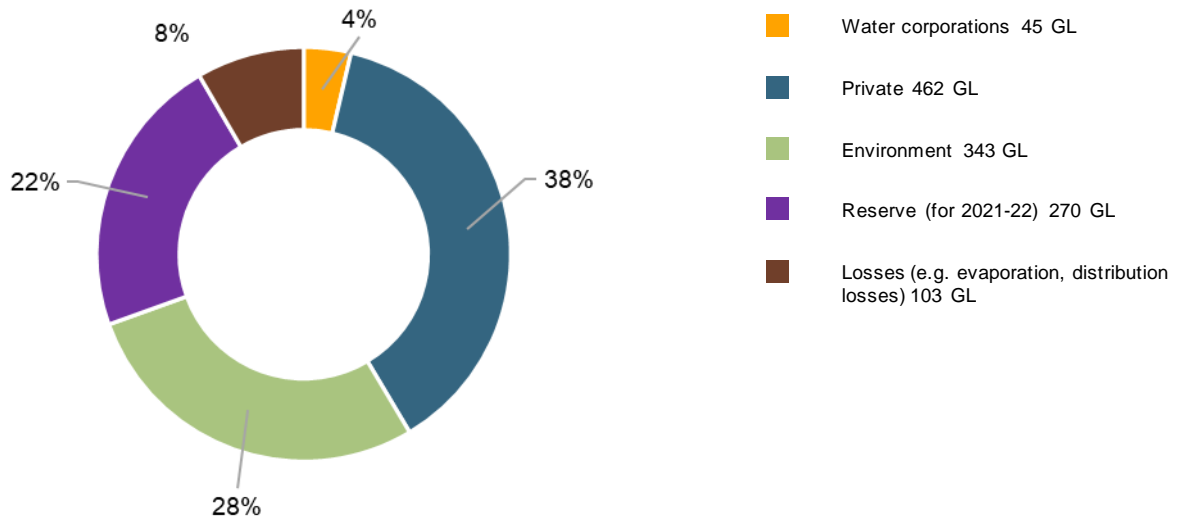


Figure 4: Volumes of water allocations currently available/remaining (% of total remaining) (as at 17 May 2021)

Source: [Northern Victoria Resource Manager](#)

NB: Allocation information shows water available in allocation accounts and remaining commitments at 17 May 2021. Information published by the Northern Victoria Resource Manager differs from information published on the Victorian Water Register as the former includes preliminary environmental water holder use and volumes of operational use by Goulburn-Murray Water private water shareholders.

Table 1: Allocation announcements (%) and market prices – selected licence categories as at 17 May 2021

Licence category	Announced allocation	Historic comparison (same time of year)	Entitlement prices (monthly median)	Allocation price (median – last 7 days)
VIC Goulburn High-Reliability Water Share	100%	20% higher than same time last year	\$4 000/ML	\$95/ML
VIC Goulburn Low-Reliability Water Share	0%	Same as most years	\$500/ML	

Source: [Victorian Water Register](#) and [BoM water markets dashboard](#)

FIND OUT MORE

For more information email water@bom.gov.au



With the exception of logos, photography and data referenced as being from other organisations, this publication is licensed under a Creative Commons Attribution 3.0 Australia Licence. The terms and conditions of the licence are available at <http://creativecommons.org/licenses/by/3.0/au>. Attribution for this publication should be: © Commonwealth of Australia (Bureau of Meteorology) 2021.