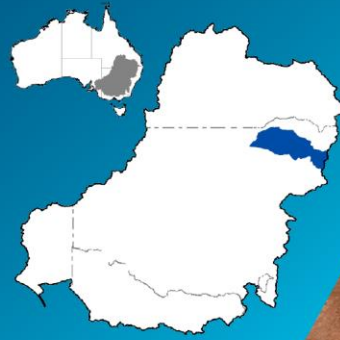




# Water Reporting Summary – Gwydir Catchment

1 June 2021



## Overview

- In the last 30 days, there has been moderate rainfall across the Gwydir catchment. The area upstream of Moree, including the catchment area of Copeton Dam, received 25 to 50 mm of rainfall while the rest of the Gwydir catchment received 10 to 25 mm. (Figure 1). The total area-average rainfall across the catchment was 26 mm in the last 30 days. This recent rainfall is in the context of the extended dry period since January 2017 with rainfall across the Gwydir catchment mainly being below to very much below average with some record low rainfall in the far west (Figure 2). However, the good rainfall in recent months has improved the medium-term rainfall percentiles.
- Rainfall in the last month has maintained the catchment wetness with very much above average root zone soil moisture for the middle part of the Gwydir catchment and the remaining areas above average apart from the downstream part with average soil moisture. Recent rainfall has generated some runoff and inflows to Copeton Dam (Figure 3).
- The last two months rainfall has improved the water availability and the general security allocations have increased from 54.80% to 57.10% which are the highest allocations for the last three years (Table 1).

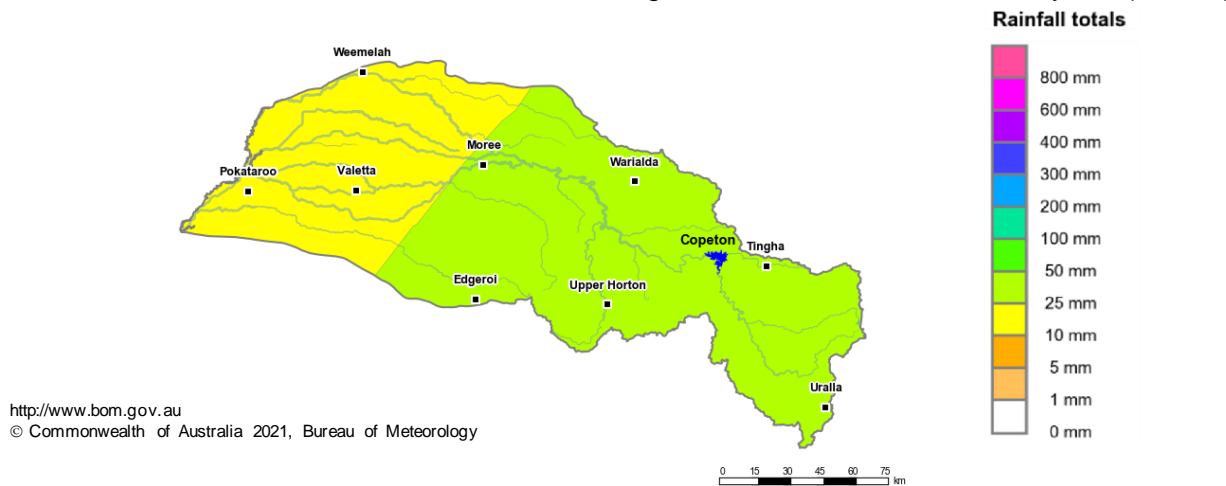


Figure 1: Rainfall totals for the last 30 days (03 May to 01 June 2021)

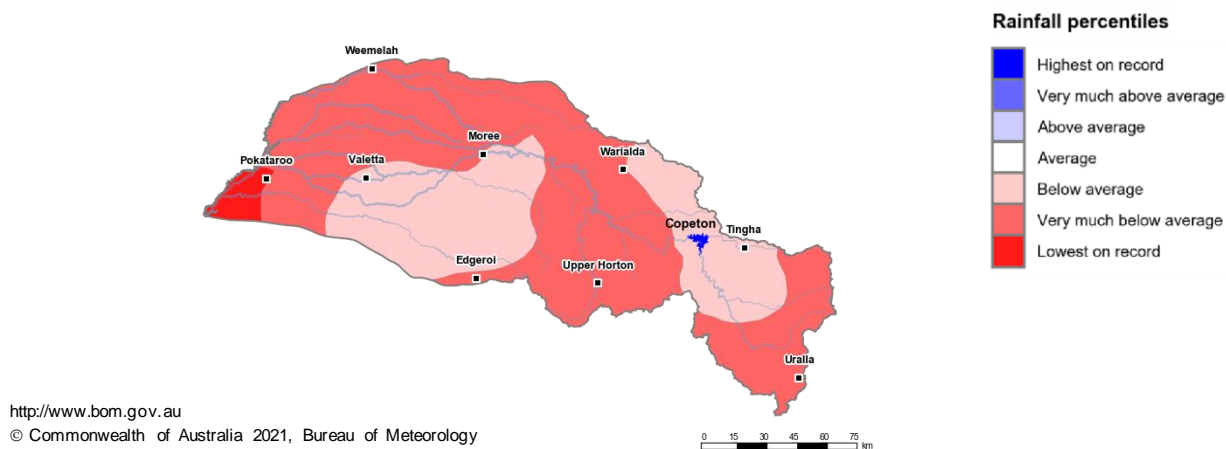


Figure 2: Rainfall percentiles since January 2017 (compared to 1900–2019 long-term average) (Jan 2017 to May 2021)

Note: Rainfall percentiles for the period from January 2017 are shown as the Bureau of Meteorology considers January 2017 to be the start of the current dry period for eastern Australia.

# How much water is in the storage?

Storage volume: Copeton storage as at 30 May 2021

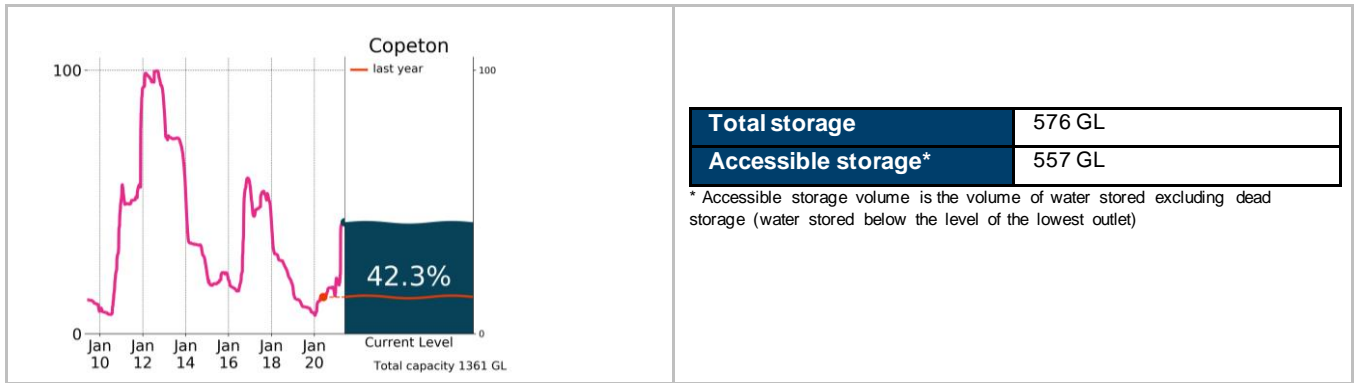


Figure 3: Current total storage (% of total capacity) compared to the last ten years

Source: [BoM water storages dashboard](#)

## Who is the water for?

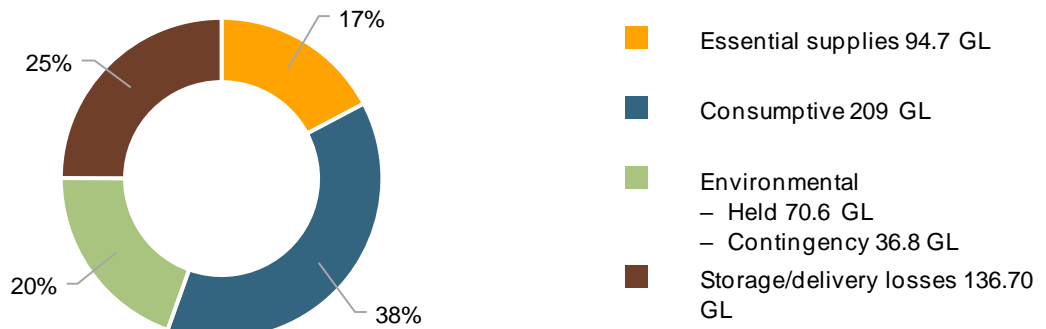


Figure 4: Volumes of water allocated (% of total) for the 2020–21 water year (last updated 7 May 2021)

Source: [NSW Department of Planning, Industry and Environment](#)

NB: Allocation information shown here is water allocated for various purposes as at 7 May 2021. It does not represent remaining available allocated water as it does not allow for water used, traded or new storage inflows (in excess of minimum assumptions).

Table 1: Allocation announcements (%) and market prices – selected licence categories as at 1 June 2021

Licence category	Announced allocation	Historic comparison (same time of year)	Entitlement prices (monthly median)	Allocation price (median – last 7 days)
Stock & Domestic, Local Utility	100%	Same as most years	n/a	n/a
Gwydir High Security	100%	Same as most years	n/a	
Gwydir General Security	57.10%	Highest allocations in last three years	n/a	
Average Carryover (General Security)	5%	3% last year	n/a	

Source: [NSW Department of Planning, Industry and Environment](#) and [BoM water markets dashboard](#)

FIND OUT MORE

For more information email [water@bom.gov.au](mailto:water@bom.gov.au)



With the exception of logos, photography and data referenced as being from other organisations, this publication is licensed under a Creative Commons Attribution 3.0 Australia Licence. The terms and conditions of the licence are available at <http://creativecommons.org/licenses/by/3.0/au>. Attribution for this publication should be: © Commonwealth of Australia (Bureau of Meteorology) 2021.