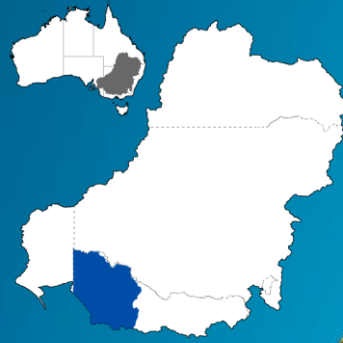




Water Reporting Summary - Wimmera-Mallee Catchment

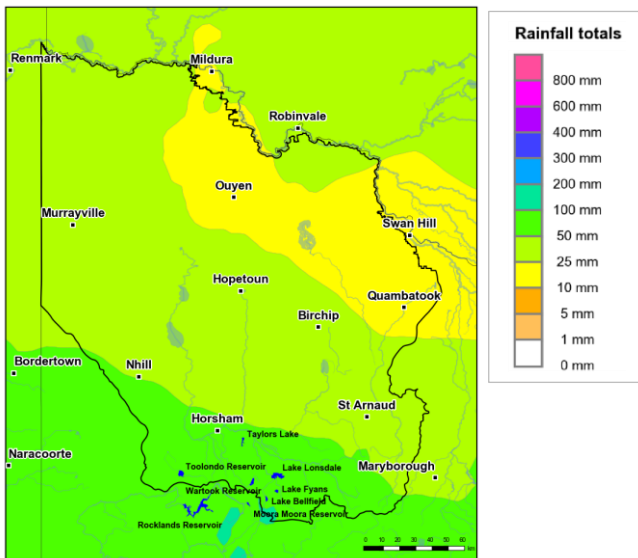
1 October 2020



Overview

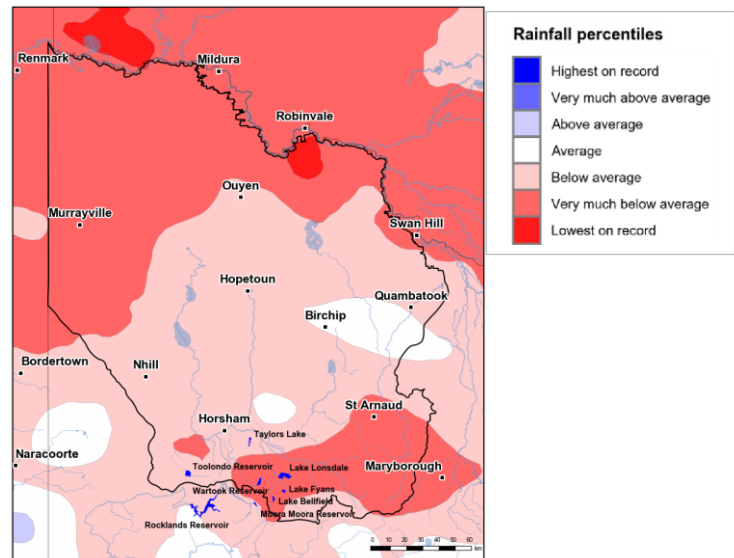
- In the last month, there has been widespread rainfall across the Wimmera-Mallee catchment. North-eastern areas of the catchment received 10 to 25 mm, with the central catchment receiving 25 to 50 mm of rainfall. In the south, areas near Toolondo Reservoir, Lake Lonsdale, Lake Fyans and Lake Bellfield received up to 100 mm of rainfall (Figure 1). The total area-average rainfall for the catchment was 36 mm. This recent rainfall is in the context of the extended dry period since January 2017 with rainfall for the central Wimmera-Mallee catchment being average or below average, and the remainder of the catchment being mainly very much below average (Figure 2).
- Rainfall in the last month has resulted in average root zone soil moisture for the northern and central areas of the Wimmera-Mallee catchment. Even in the southern areas of the catchment where more rainfall was received during September, soil moisture is below average, however this is typically a wet time of year for this area and the average is relatively high. Recent rainfall near storages has translated into some runoff and inflows into storages (Figures 3 and 4).
- Seasonal allocations are currently 9%, with water currently available to entitlement holders mainly related to carryover from the 2019-20 water year (Table 1) (GWMWater Storage Manager).

Recent conditions



<http://www.bom.gov.au>
© Commonwealth of Australia 2020, Bureau of Meteorology

Figure 1: Rainfall totals for the last 30 days
(2 Sept to 1 Oct 2020)



<http://www.bom.gov.au>
© Commonwealth of Australia 2020, Bureau of Meteorology

Figure 2: Rainfall percentiles since January 2017 (Compared to 1900-2019 long-term average) (Jan 2017 to Sept 2020)

Note: Rainfall percentiles for the period from January 2017 are shown as the Bureau of Meteorology considers January 2017 to be the start of the current dry period for eastern Australia.

How much water is in the storages?

Storage volume: Lake Bellfield, Lake Fyans, Lake Lonsdale, Moora, Rocklands, Taylor Lake, Toolondo and Wartook storages as at 23 September 2020

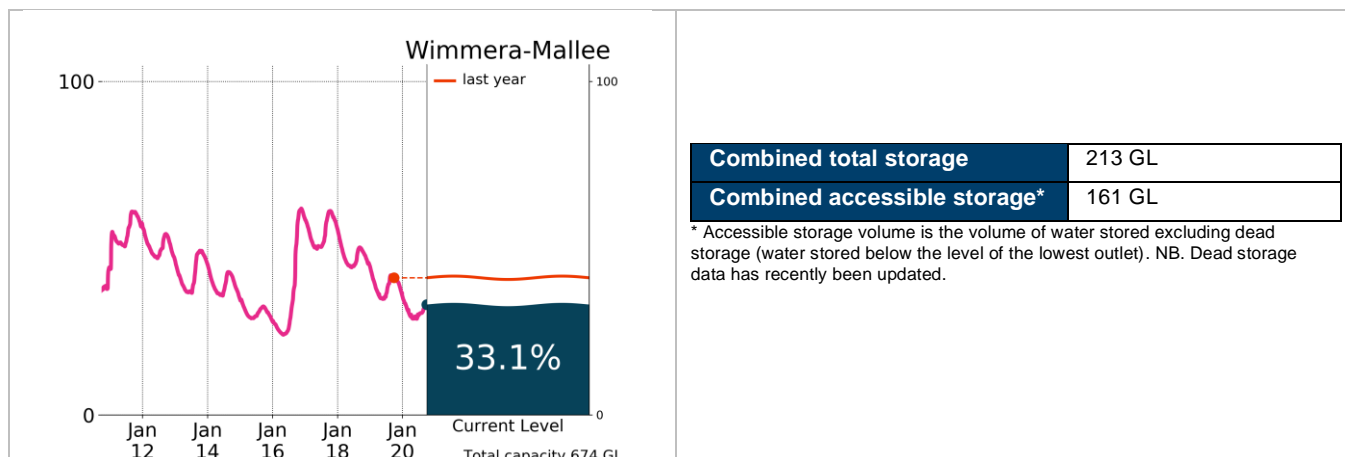


Figure 3: Current total storage (% of total capacity) compared to the last ten years

Source: [BoM water storages dashboard](#)

Who is the water for?

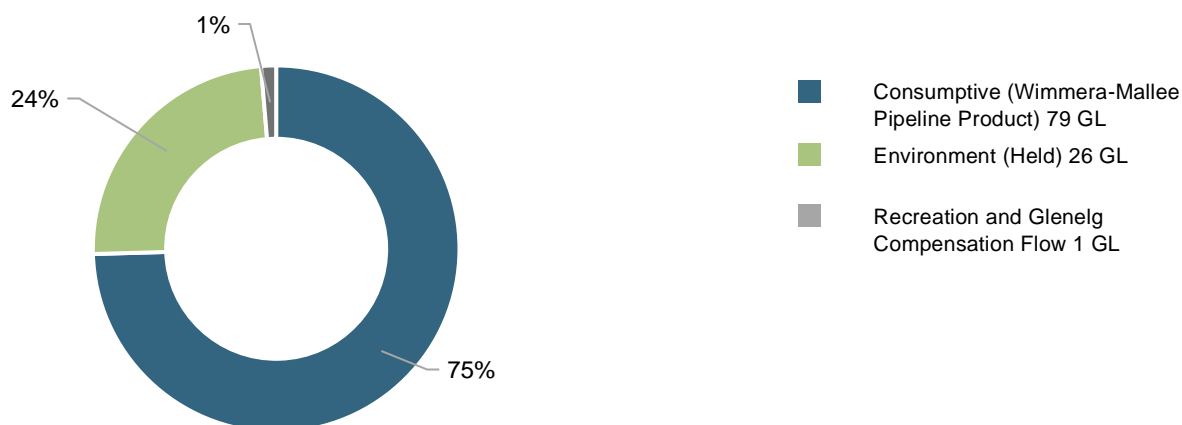


Figure 4: Volumes of water available, including carryover (% of total) (as at 2 September 2020)

Source: [GWMWater](#)

Table 1: Allocation announcements (%) and market prices – Selected licence categories as at 1 October 2020

Licence category	Announced allocation	Historic comparison (same time of year)	Entitlement Prices (monthly median)	Allocation Price (median - last 7 days)
Wimmera-Mallee Pipeline Product	9%	Similar to last year	n/a	n/a

Source: [GWMWater](#) and [BoM water markets dashboard](#)

FIND OUT MORE

For more information email water@bom.gov.au



With the exception of logos, photography and data referenced as being from other organisations, this publication is licensed under a Creative Commons Attribution 3.0 Australia Licence. The terms and conditions of the licence are available at <http://creativecommons.org/licenses/by/3.0/au>. Attribution for this publication should be: © Commonwealth of Australia (Bureau of Meteorology) 2020.