



Water Reporting Summary - Lachlan Catchment

1 September 2020



Overview

- In the last month, downstream areas of the Lachlan catchment received between 25 to 50 mm of rainfall, while the central catchment received 50 to 100 mm. Some upstream areas, including upstream of Wyangala Dam, received up to 200 mm of rainfall (Figure 1). The total area-average rainfall for the catchment was 62 mm. This recent welcome rainfall is in the context of the extended dry period since January 2017 with rainfall across the Lachlan catchment mainly below average or very much below average (Figure 2).
- The recent rainfall has helped to maintain average root zone soil moisture conditions for most of the lower and central Lachlan catchment and above average soil moisture for most of the upper catchment over the last month. The recent rainfall has translated into significant runoff and inflows into storages (Figure 3). Consequently, Drought Stage 3 has eased to Drought Stage 2 conditions in the Lachlan catchment. In Drought Stage 2 (Emerging drought or drought recovery), there has been limited water resources and multiple years of low flows. With water resources improving, it is expected that allocations will be made to general security entitlement holders (currently at 0%) as part of the next scheduled announcement on 8 September (NSW DPIE) (Figure 4 and Table 1).
- Allocation prices have started the 2020-21 water year similar to last month (\$160 per ML compared to \$200 per ML) but are well below their peak of \$1000 per ML in May 2020.

Recent conditions

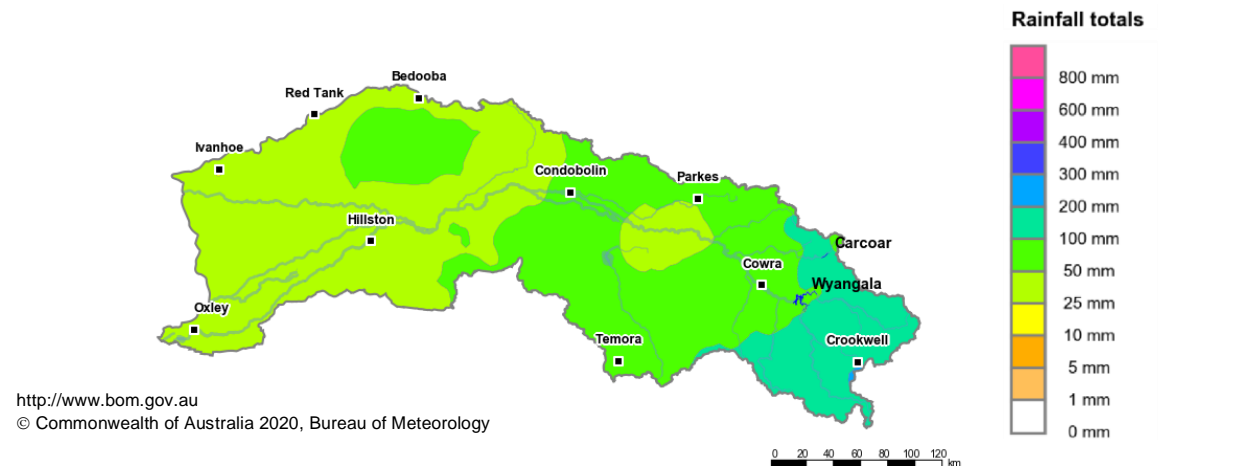


Figure 1: Rainfall totals for the last 30 days (3 Aug to 1 Sept 2020)

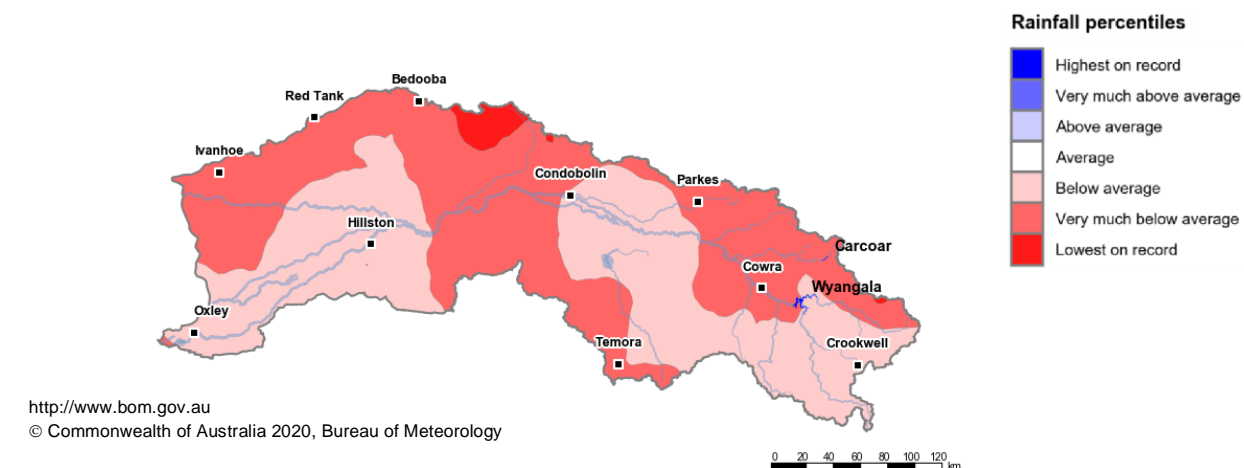


Figure 2: Rainfall percentiles since January 2017 (Compared to 1900-2019 long-term average) (Jan 2017 to Aug 2020)

Note: Rainfall percentiles for the period from January 2017 are shown as the Bureau of Meteorology considers January 2017 to be the start of the current dry period for eastern Australia.

How much water is in the storages?

Storage volume: Wyangala and Carcoar storages as at 30 August 2020

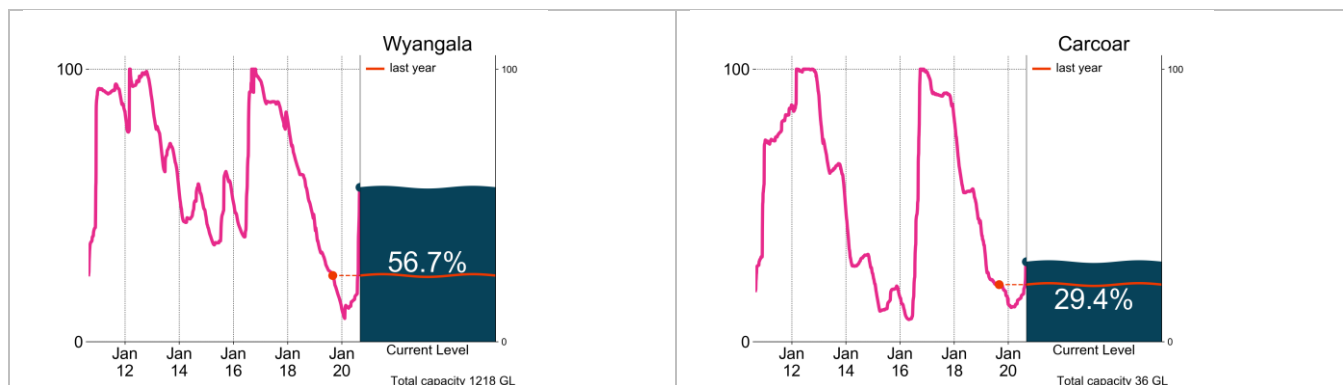


Figure 3: Current total storage (% of total capacity) compared to the last ten years

Source: [BoM water storages dashboard](#)

Who is the water for?



Figure 4: Volumes of licenced water available (updated 3 Aug 2020)

Source: [NSW DPIE Water usage dashboard](#) and [CEWO](#)

NB: Allocation information shown here is water available for various licence categories as at 3 August 2020.

Table 1: Allocation announcements (%) and market prices – Selected licence categories as at 1 September 2020

Licence category	Announced allocation	Historic comparison (same time of year)	Entitlement Prices (monthly median)	Allocation Price (median - last 7 days)
Stock & Domestic	100%	Same as most years	n/a	\$160/ML*
High Security	100%	Lowest opening allocation since 2009-10	\$4250/ML*	
General Security	0%	With carryover, the lowest available water since 2009-10	\$1200/ML*	
Average Carryover (General Security)	6%	14.9% available last year	n/a	

*Indicative - limited trades

Source: [NSW Department of Planning, Industry and Environment](#) and [BoM water markets dashboard](#)

FIND OUT MORE

For more information email water@bom.gov.au



With the exception of logos, photography and data referenced as being from other organisations, this publication is licensed under a Creative Commons Attribution 3.0 Australia Licence. The terms and conditions of the licence are available at <http://creativecommons.org/licenses/by/3.0/au>. Attribution for this publication should be: © Commonwealth of Australia (Bureau of Meteorology) 2020.