



Water Reporting Summary - Macquarie-Castlereagh Catchment

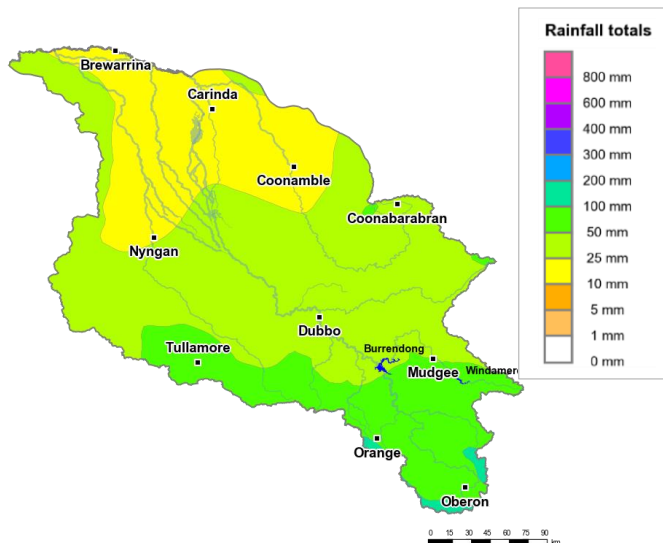
1 September 2020



Overview

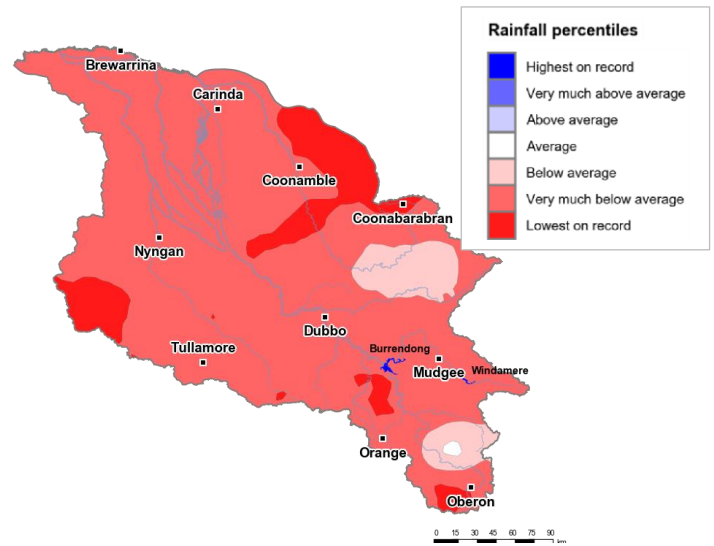
- In the last 30 days, most of the downstream areas of the Macquarie-Castlereagh catchment received less than 25 mm of rainfall, whereas most central areas received 25 to 50 mm. In contrast, upstream areas near Windamere Dam and upstream of Burrendong Dam received 50 to 100 mm of rainfall (Figure 1). The total area-average rainfall for the catchment was 38 mm. This recent patchy rainfall is in the context of the extended dry period since January 2017 with rainfall across the Macquarie-Castlereagh catchment being mainly very much below average or lowest on record (Figure 2).
- The recent rainfall has helped to maintain average to above average root zone soil moisture conditions and has translated into some runoff and inflows into storages (Figure 3). Drought Stage 3 has eased to Drought Stage 2 conditions for parts of the of Macquarie-Castlereagh catchment. In Drought Stage 2, there has been limited water resources and multiple years of low flows (NSW DPIE). Consequently, there have been low or no allocations for some entitlement holders and water trading has been limited (Figure 4 and Table 1).
- Allocations for general security entitlement holders are currently 0%, which is the third consecutive year opening with no allocations (Figure 4 and Table 1).
- A detailed water allocation summary is scheduled for 10 September 2020 (NSW DPIE).

Recent conditions



<http://www.bom.gov.au>
© Commonwealth of Australia 2020, Bureau of Meteorology

Figure 1: Rainfall totals for the last 30 days
(3 Aug to 1 Sept 2020)



<http://www.bom.gov.au>
© Commonwealth of Australia 2020, Bureau of Meteorology

Figure 2: Rainfall percentiles since January 2017 (Compared to 1900-2019 long-term average) (Jan 2017 to Aug 2020)

Note: Rainfall percentiles for the period from January 2017 are shown as the Bureau of Meteorology considers January 2017 to be the start of the current dry period for eastern Australia.

How much water is in the storages?

Storage volume: Burrendong, Windamere storages as at 30 August 2020

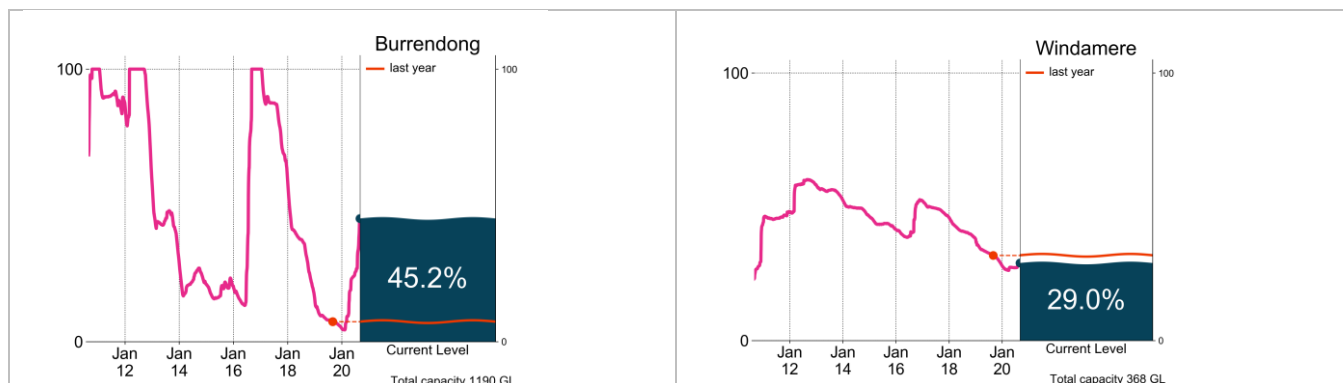


Figure 3: Current total storage (% of total capacity) compared to the last ten years
 Source: [BoM water storages dashboard](#)

Who is the water for?

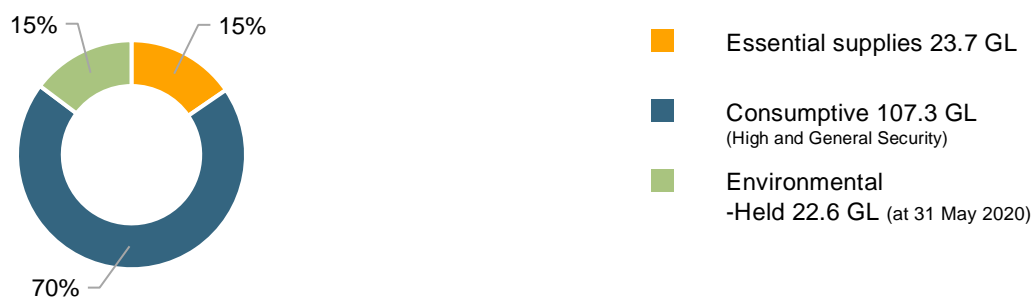


Figure 4: Volumes of licenced water available (updated 26 Aug 2020)
 Source: [NSW DPIE Water usage dashboard](#) and [CEWO](#)

NB: Allocation information shown here is water available for various licence categories from the Macquarie and Cudgegong regulated river sources within the Macquarie-Castlereagh catchment as at 26 August 2020.

Table 1: Allocation announcements (%) and market prices – Selected licence categories as at 1 September 2020

Licence category	Announced allocation	Historic comparison (same time of year)	Entitlement Prices (monthly median)	Allocation Price (median - last 7 days)
Stock & Domestic	100%	Same as most years	n/a	\$50/ML*
High Security	100%	Same as most years	n/a	
General Security	0%	0% opening allocations for third consecutive year	\$1,850/ML*	
Average Carryover (General Security)	8% currently available	1.6 % available last year	n/a	

*Indicative - limited trades

Source: [NSW Department of Planning, Industry and Environment](#) and [BoM water markets dashboard](#)

FIND OUT MORE

For more information email water@bom.gov.au



With the exception of logos, photography and data referenced as being from other organisations, this publication is licensed under a Creative Commons Attribution 3.0 Australia Licence. The terms and conditions of the licence are available at <http://creativecommons.org/licenses/by/3.0/au>. Attribution for this publication should be: © Commonwealth of Australia (Bureau of Meteorology) 2020.