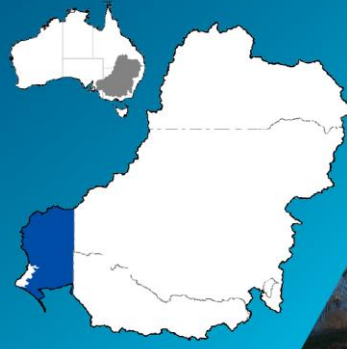




# Water Reporting Summary - South Australian Murray

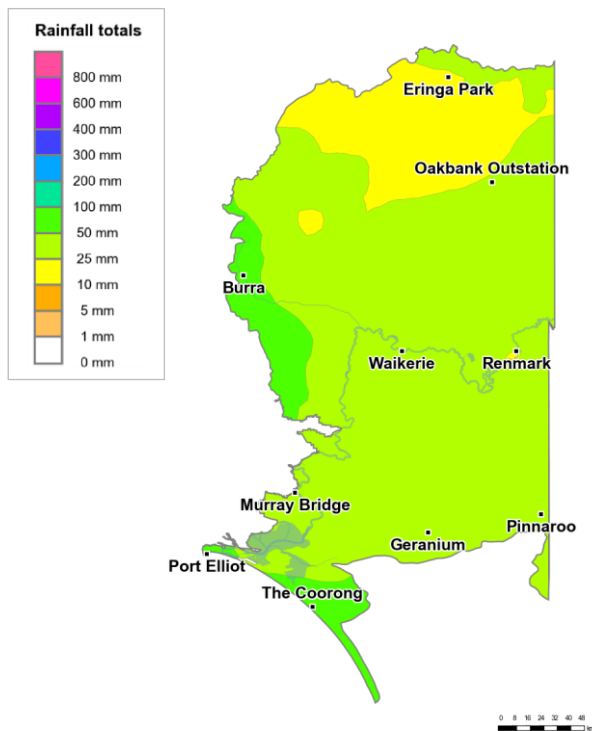
1 September 2020



## Overview

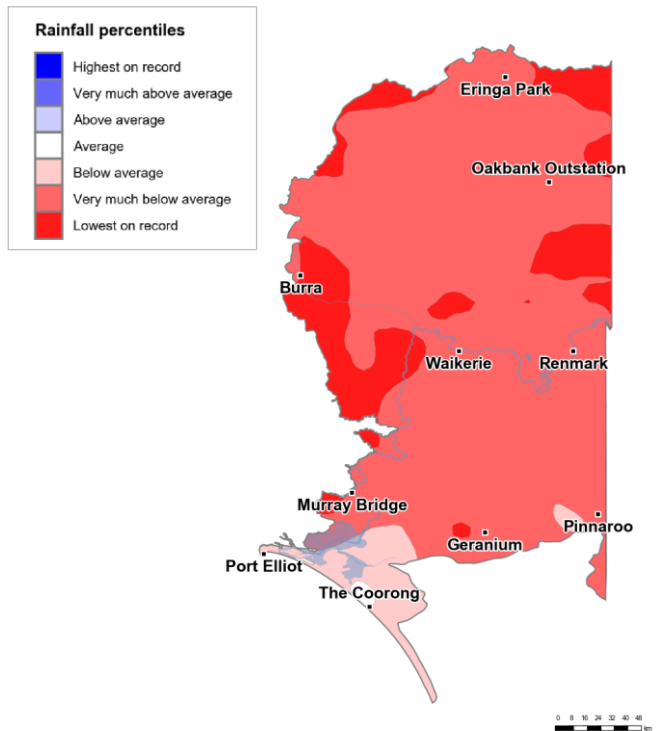
- In the last 30 days, most of the South Australian Murray catchment received 25 to 50 mm of rainfall with areas around Burra and the Coorong receiving up to 100 mm. In contrast, northern areas near Eringa Park received 10 to 25 mm of rainfall (Figure 1). The catchment area-average rainfall was 34 mm. This patchy rainfall is in the context of the extended dry period from January 2017 with rainfall across most of the South Australian Murray catchment mainly being very much below average although some areas are lowest on record (Figure 2).
- Water allocations to Class 3 high security entitlement holders are currently 100% (Figure 4). In six out of the last ten years, 100% allocation was announced at the beginning of the water year (1 July).
- Allocation prices are currently \$265 per ML, which is lower than last month (\$360 per ML) and significantly lower than the peak of over \$950 per ML in November 2019 (Table 1).

## Recent conditions



<http://www.bom.gov.au>  
© Commonwealth of Australia 2020, Bureau of Meteorology

Figure 1: Rainfall totals for the last 30 days (3 Aug to 1 Sept 2020)



<http://www.bom.gov.au>  
© Commonwealth of Australia 2020, Bureau of Meteorology

Figure 2: Rainfall percentiles since January 2017 (Compared to 1900-2019 long-term average) (Jan 2017 to Aug 2020)

Note: Rainfall percentiles for the period from January 2017 are shown as the Bureau of Meteorology considers January 2017 to be the start of the current dry period for eastern Australia.

## How much water is there for the South Australian Murray?

The current projected minimum volume of water available to South Australia by the end of 2019-20: 1,595 GL\*

\*Based on the MDBA's current assessment of water resource availability. It provides for an allocation of 800 GL for consumptive entitlements and an allowance for dilution and losses, and excludes water held under South Australia's Storage Right (339.3 GL as at end July 2020). The storage right has been set aside under Schedule G of the Murray-Darling Basin Agreement to meet future critical human water needs and private carryover.

Source: [SA Department of Environment and Water](#) and [MDBA](#)

## How much water is in the MDBA operated storages?

Total volume in the MDBA operated storages: 5,075 GL (as at 1 September 2020)

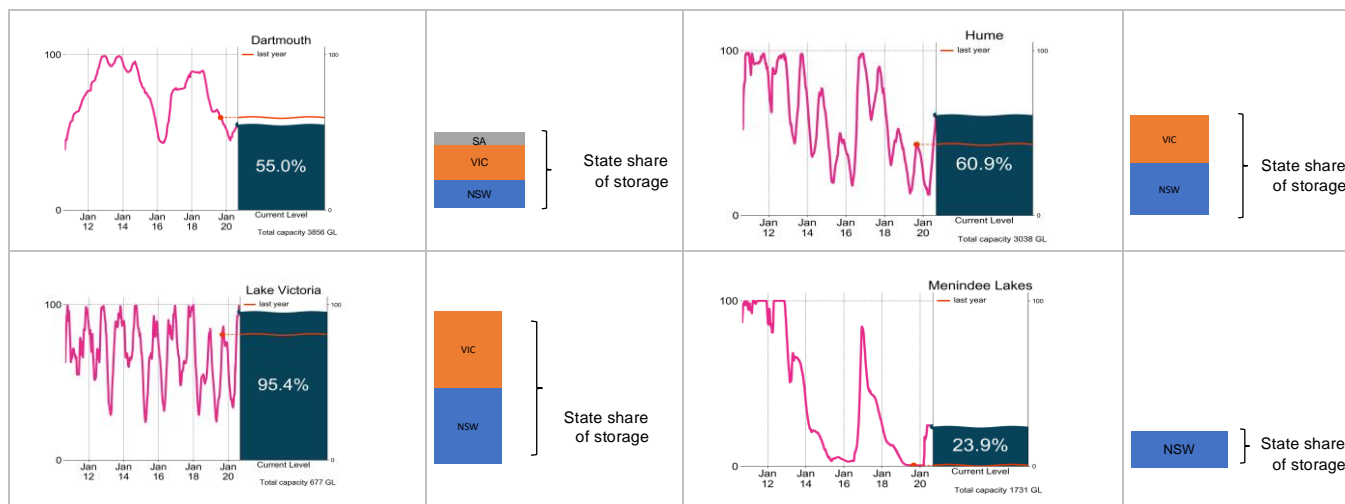


Figure 3: Current total storage (% of total capacity) as at 1 September 2020 compared to the last ten years (State shares updated end July 2020)

Source: [BoM water storages dashboard](#) and [MDBA](#)

## Who is the water for?

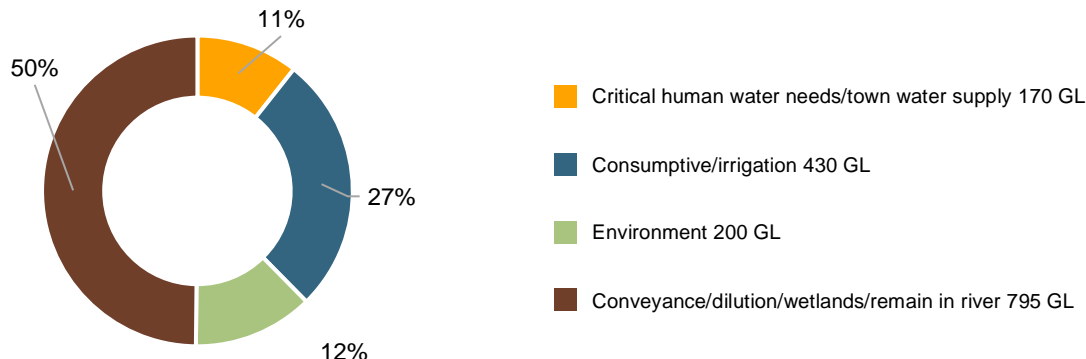


Figure 4: Volumes of water allocated (% of total) for the 2020-21 water year (as at 1 September 2020)

Source: [SA Department of Environment and Water](#)

NB: Information shown is water allocated for various purposes in 2020-21 and is not adjusted for water used or traded.

Table 1: Allocation announcements (%) and market prices – Selected licence categories as at 1 September 2020

Licence category	Announced allocation	Historic comparison (same time of year)	Entitlement Prices (monthly median)	Allocation Price (median - last 7 days)
SA Murray Class 1 (stock and domestic)	100%	Same as most years	n/a	\$265/ML
SA Murray Class 3 (irrigation)	100%	In six out of the last ten years, 100% allocation was announced on 1 July.	\$6,900/ML	

Source: [SA Department of Environment and Water](#) and [BoM water markets dashboard](#)

FIND OUT MORE

For more information email [water@bom.gov.au](mailto:water@bom.gov.au)



With the exception of logos, photography and data referenced as being from other organisations, this publication is licensed under a Creative Commons Attribution 3.0 Australia Licence. The terms and conditions of the licence are available at <http://creativecommons.org/licenses/by/3.0/au>. Attribution for this publication should be: © Commonwealth of Australia (Bureau of Meteorology) 2020.