



# Water Reporting Summary – Namoi Catchment

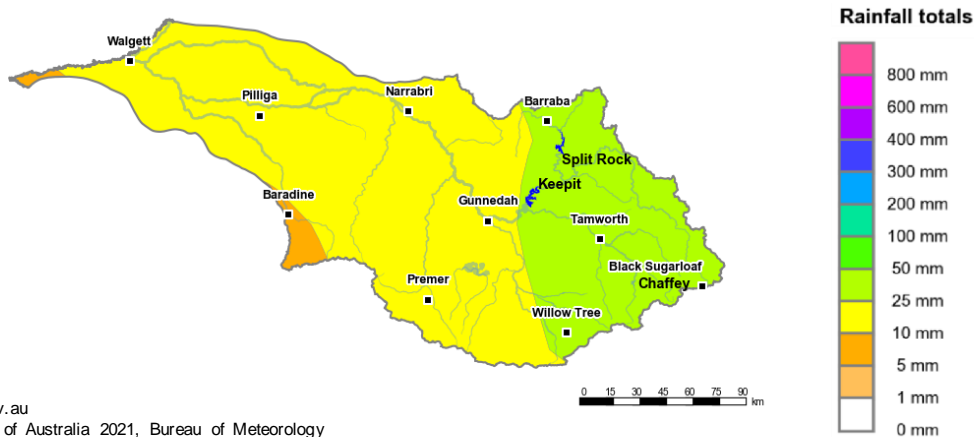
3 May 2021



## Overview

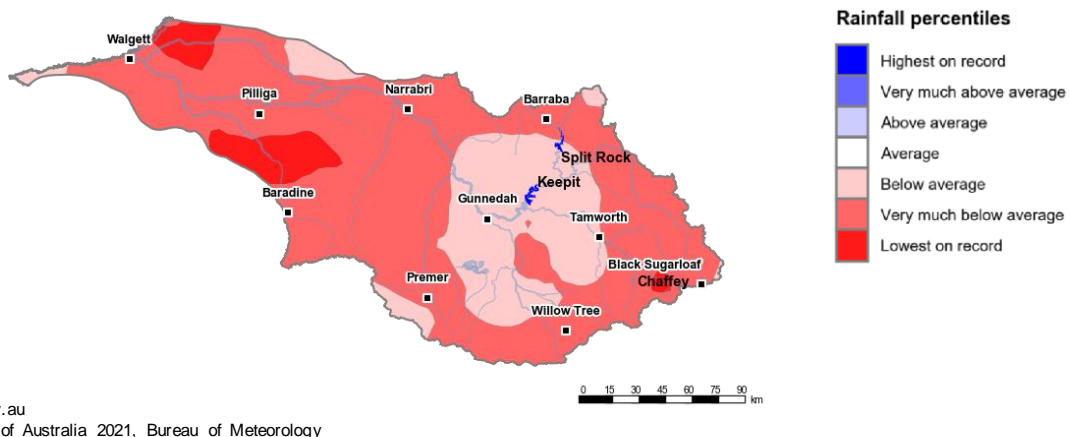
- In the last month, there has been moderate rainfall across the Namoi catchment with most areas upstream of Gunnedah receiving 25 to 50 mm of rainfall. The areas downstream of Gunnedah received 10 to 25 mm of rainfall (Figure 1). The total area-average rainfall across the catchment was 20 mm for the last 30 days. This rainfall is in the context of the extended dry period since January 2017 with rainfall across the catchment very much below average except for the central part having below average rainfall and some areas in the west having lowest on record rainfall (Figure 2).
- In the last month, the root zone soil moisture across the catchment was very much above average with some areas near Premer and Narrabri having above average soil moisture levels. The recent rainfall has had a positive influence on runoff and inflows into storages (Figure 3) which has improved the water availability (Figure 4).
- Announced allocations for general security entitlement holders in the Upper Namoi are currently 100% and for the Lower Namoi have increased to 82.6%. Allocations for general security entitlement holders in the Peel have also increased to 61% (Table 1).
- There has been some water trading activity with allocation prices of \$150 per ML, which is slightly below prices paid at the same time last year (\$200 per ML) (Table 1).

## Recent conditions



<http://www.bom.gov.au>  
© Commonwealth of Australia 2021, Bureau of Meteorology

Figure 1: Rainfall totals for the last 30 days (4 April to 3 May 2021)



<http://www.bom.gov.au>  
© Commonwealth of Australia 2021, Bureau of Meteorology

Figure 2: Rainfall percentiles since January 2017 (compared to 1900–2019 long-term average) (Jan 2017 to April 2021)

Note: Rainfall percentiles for the period from January 2017 are shown as the Bureau of Meteorology considers January 2017 to be the start of the current dry period for eastern Australia

# How much water is in the storages?

Storage volume: Split Rock, Keepit and Chaffey storages as at 1 May 2021

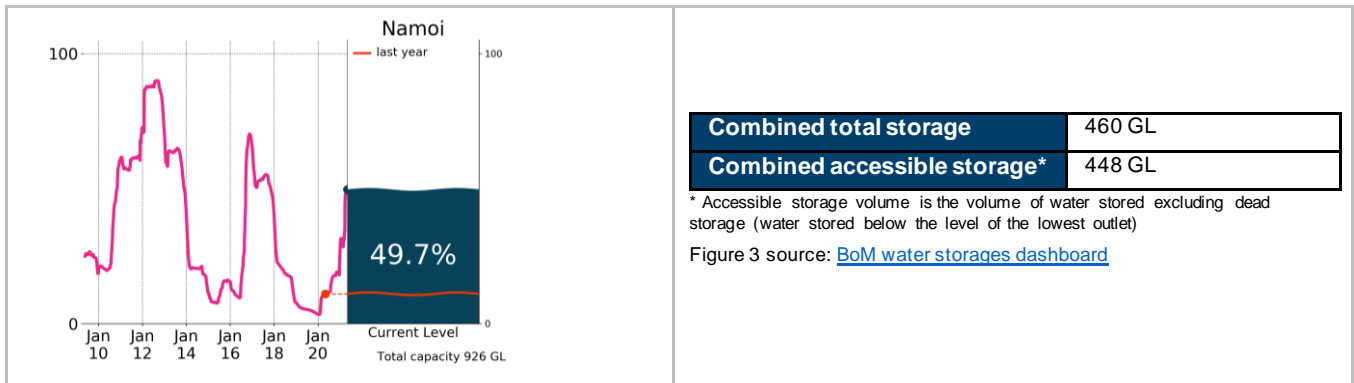


Figure 3: Current total storage (% of total capacity) compared to the last ten years

## Who is the water for?

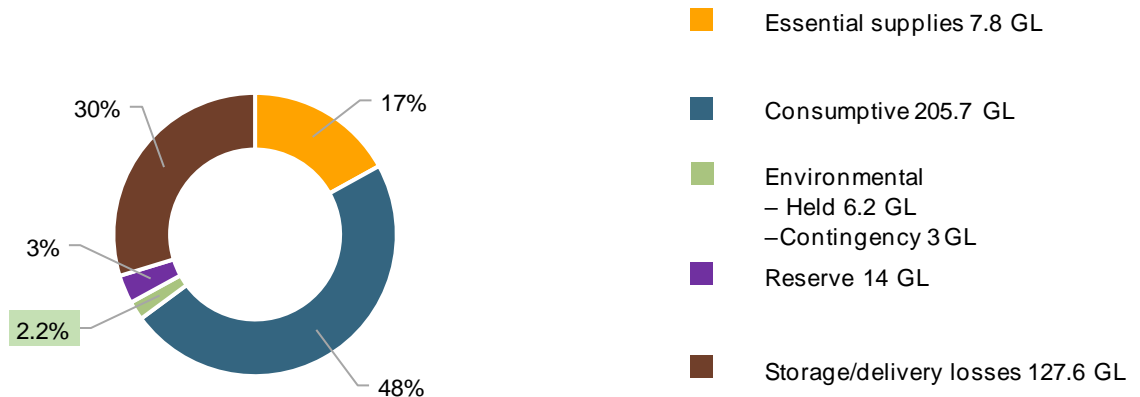


Figure 4: Volumes of water allocated (% of total) for the 2020–21 water year (last updated 9 April 2021)

Source: [NSW Department of Planning, Industry and Environment](#) and [CEWO](#)

NB: Allocation information shown here is water allocated for various purposes in the Upper Namoi and Lower Namoi regulated river water sources as at 9 April 2021, and the Peel regulated river water source as at 9 April 2021. It does not represent remaining available allocated water as it does not allow for water used, traded or new storage inflows (in excess of minimum assumptions).

Table 1: Allocation announcements (%) and market prices – selected licence categories as at 3 May 2021

Licence category	Announced allocation	Historic comparison (same time of year)	Entitlement prices (monthly median)	Allocation price (median – last 7 days)
Stock & Domestic, Local Utility	100% (Upper & Lower Namoi) 100% (Peel)	Typically 100%	n/a	\$150/ML (Lower Namoi) \$150/ML* (Upper Namoi)
High Security	100% (Upper & Lower Namoi) 100% (Peel)	Typically 100%	n/a	
General Security	100% (Upper Namoi) 82.6% (Lower Namoi) 61% (Peel)	For Lower Namoi, the highest allocation for this time of year since 2016-17. For the Peel, first allocation since 2018-19.	\$2 300/ML*	
Average Carryover or Starting balance on 1 July (General Security)	40% (Upper Namoi) 6% (Lower Namoi) n/a (Peel)	23% last year (Upper Namoi) 5% last year (Lower Namoi) n/a (Peel)	n/a	

\*Indicative - limited trade data

Source: [NSW Department of Planning, Industry and Environment](#) and [BoM water markets dashboard](#)

FIND OUT MORE

For more information email [water@bom.gov.au](mailto:water@bom.gov.au)



With the exception of logos, photography and data referenced as being from other organisations, this publication is licensed under a Creative Commons Attribution 3.0 Australia Licence. The terms and conditions of the licence are available at <http://creativecommons.org/licenses/by/3.0/au>. Attribution for this publication should be: © Commonwealth of Australia (Bureau of Meteorology) 2021.