



Water Reporting Summary – Condamine–Balonne Catchment

3 May 2021

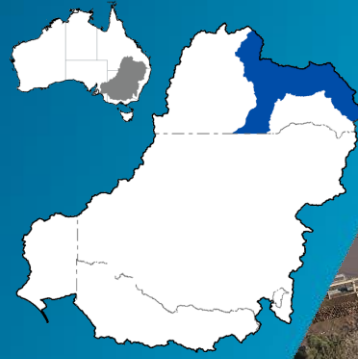
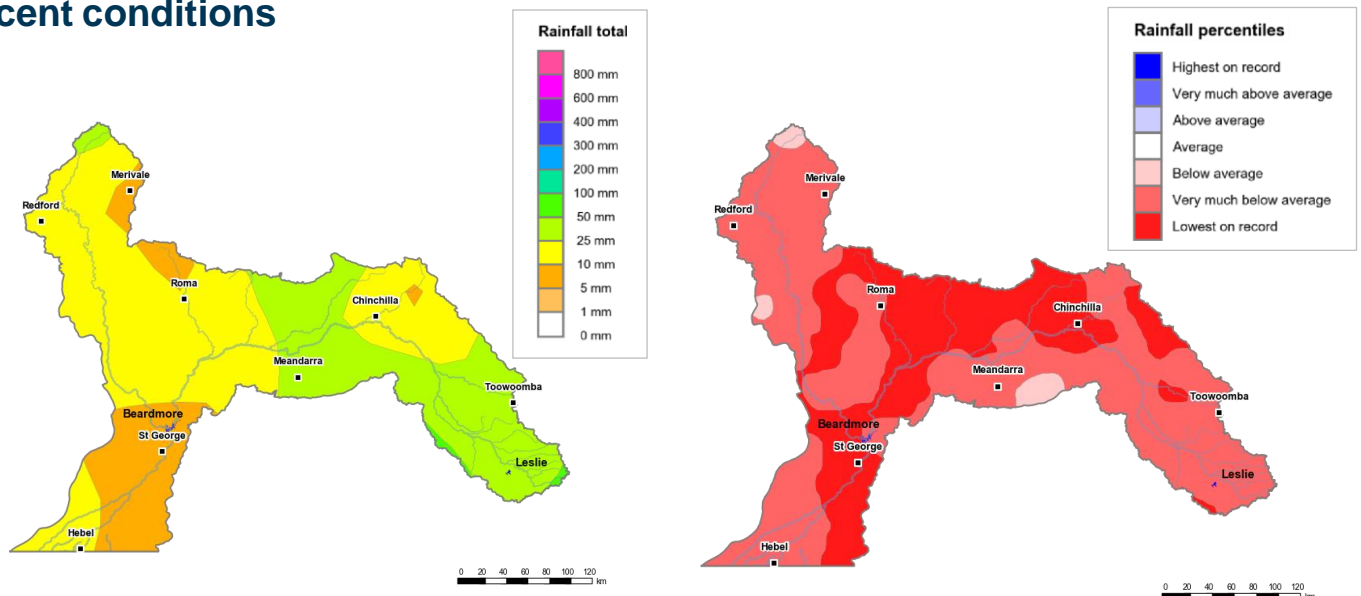


Photo: Beardmore Dam – Balonne Shire Council

Overview

- In the last month, most of the eastern half of the Condamine–Balonne catchment received 25 to 50 mm of rainfall, except for areas around Chinchilla Weir which received 10 to 25 mm of rainfall. The western half of the catchment mostly received 10 to 25 mm of rainfall with areas including near Beardmore Dam receiving 5 to 10 mm of rainfall (Figure 1). As a result, the total area-average rainfall across the catchment was 20 mm over the last 30 days. This rainfall is in the context of the extended dry period since January 2017 with rainfall across the Condamine–Balonne catchment mainly very much below average or lowest on record (Figure 2).
- In the last 30 days, the root zone soil moisture was mostly very much above average in the upper half of the Condamine–Balonne catchment and in areas near Hebel. In the rest of the catchment soil moisture was above average with small areas of average soil moisture near St. George. Recent rainfall has not translated into runoff and inflows into storages, and the storage volume has decreased slightly (Figure 3).
- Announced allocations for high priority entitlements in water supply schemes (WSS) in the Condamine–Balonne catchment opened the 2020–21 water year at 100%. The recent rainfall has contributed significantly to the inflows into Chinchilla storage with medium priority allocation for the Chinchilla Weir WSS now 100%. Allocations for medium priority entitlements in the St George WSS and Upper Condamine WSS are currently 75% (Figure 4 and Table 1).

Recent conditions



<http://www.bom.gov.au>
© Commonwealth of Australia 2021, Bureau of Meteorology

Figure 1: Rainfall totals for the last 30 days
(4 April to 3 May 2021)

<http://www.bom.gov.au>
© Commonwealth of Australia 2021, Bureau of Meteorology

Figure 2: Rainfall percentiles since January 2017 (compared to 1900–2019 long-term average) (Jan 2017 to April 2021)

Note: Rainfall percentiles for the period from January 2017 are shown as the Bureau of Meteorology considers January 2017 to be the start of the current dry period for eastern Australia.

How much water is in the storages?

Storage volume: Beardmore, Leslie, Chinchilla and Jack Taylor storages as at 2 May 2021

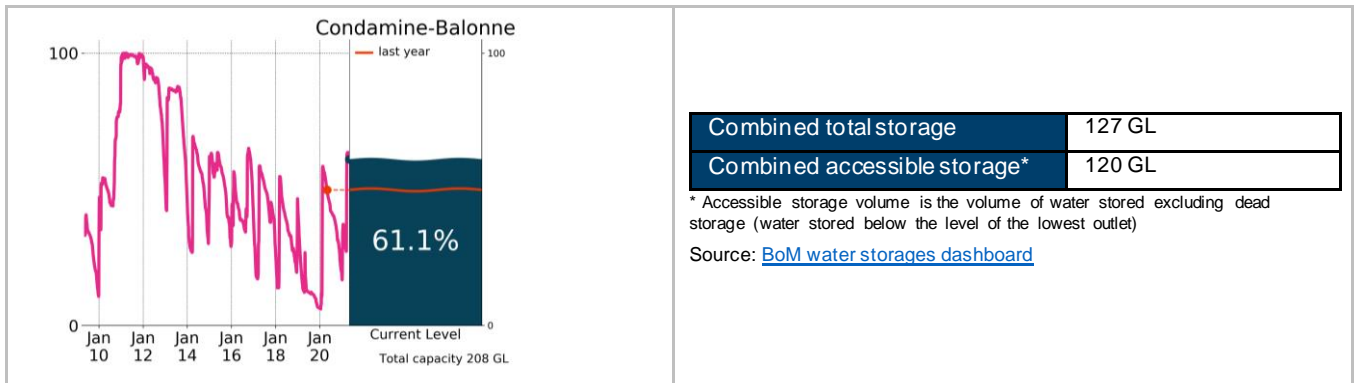


Figure 3: Current total storage (% of total capacity) compared to the last ten years

Source: [BoM water storages dashboard](#)

Who is the water in storages for?

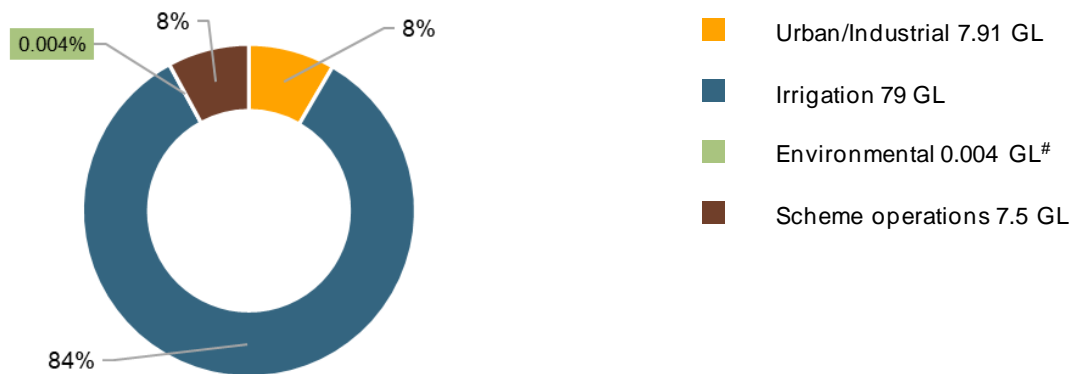


Figure 4: Volumes of water allocated (% of total) for the 2020–21 water year, supplemented schemes (last updated 1 April 2021)

Environmental allocations represent water allocations held by the CEWO only as at February 2021 and do not include environmental pass flow requirements in the operation of infrastructure throughout the catchment.

Source: [Sunwater](#) and [BoM water markets dashboard](#)

NB: Allocation information shown here is water allocated in supplemented schemes for various purposes as at 1 April 2021. It does not include unsupplemented entitlements. The information also does not represent remaining available allocated water as it does not allow for water used, traded or new storage inflows (in excess of minimum assumptions).

Table 1: Allocation announcements (%) – selected licence categories (last updated 1 April 2020)

| Licence category | Announced allocation | Historic comparison (same time of year) |
|---|----------------------|--|
| St George WSS Medium Priority (Bulk Share)* | 75% | 16% lower than same time last year |
| Upper Condamine WSS High Priority A & B | 100% | Same as most years |
| Upper Condamine WSS Medium Priority | 75% | More than 75% allocation has occurred only twice (including this year) in the last six years |
| Chinchilla Weir WSS High Priority | 100% | Same as most years |
| Chinchilla Weir WSS Medium Priority | 100% | Same as most years |

* Announced Allocation applies to Bulk Share accounts only. The majority of water allocations are managed on a continuous accounting basis (capacity share)

Source: [Sunwater](#) and [BoM water markets dashboard](#)

FIND OUT MORE

For more information email water@bom.gov.au



With the exception of logos, photography and data referenced as being from other organisations, this publication is licensed under a Creative Commons Attribution 3.0 Australia Licence. The terms and conditions of the licence are available at <http://creativecommons.org/licenses/by/3.0/au>. Attribution for this publication should be: © Commonwealth of Australia (Bureau of Meteorology) 2021.