



# Water Reporting Summary – Lachlan Catchment

4 January 2021



## Overview

- In the last 30 days, there has been widespread rainfall across the Lachlan catchment, with most of the Lachlan river areas, including the Wyangala Dam catchment, receiving 50 to 100 mm of rainfall. The downstream areas of the catchment near Oxley and central areas near Bedooba and Temora received 25 to 50 mm of rainfall (Figure 1). The total area-average rainfall for the catchment was 60 mm in the last month. This recent rainfall is in the context of the extended dry period since January 2017 with rainfall across the Lachlan catchment mainly below average or very much below average (Figure 2).
- The recent rainfall has helped maintain average or above average root zone soil moisture conditions across the Lachlan catchment. Wet soils, combined with good rainfall in the upper Lachlan catchment, have translated into some runoff and inflows into storages (Figure 3). Announced allocations for general security entitlement holders remain at 38% (Figure 4) (NSW DPIE). For this time of year, these are the highest allocations since 2016–17 (Table 1).
- Allocation prices were lower than late November (\$100 per ML compared to \$125 per ML) but are well below prices paid at the same time last year (\$550 per ML) (Table 1).

## Recent conditions

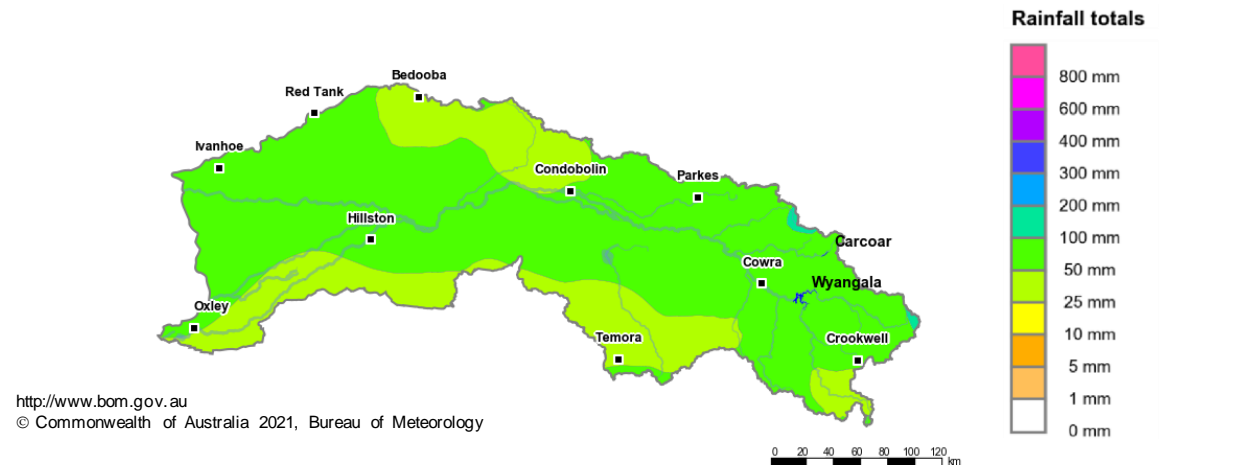


Figure 1: Rainfall totals for the last 30 days (6 Dec 2020 to 4 Jan 2021)

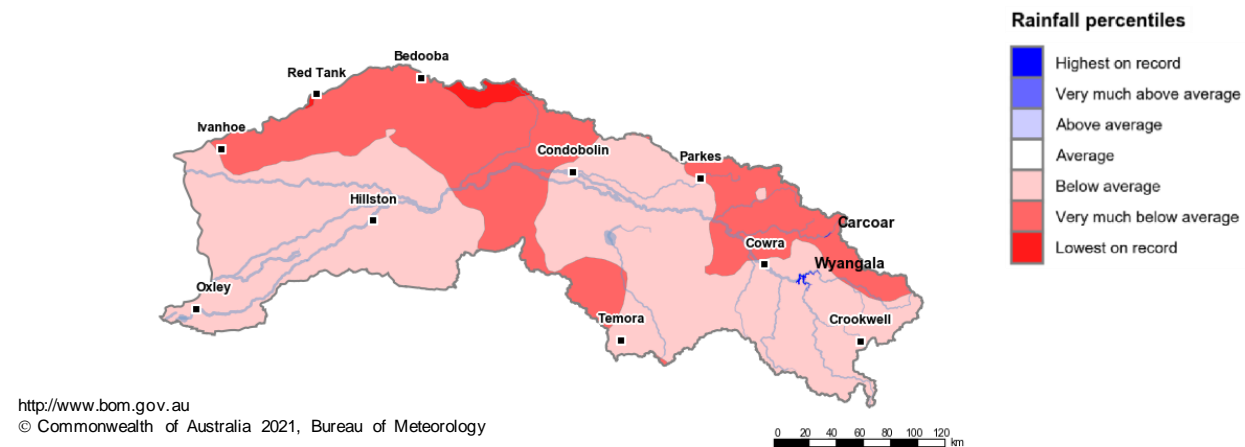


Figure 2: Rainfall percentiles since January 2017 (compared to 1900–2019 long-term average) (Jan 2017 to Dec 2020)

Note: Rainfall percentiles for the period from January 2017 are shown as the Bureau of Meteorology considers January 2017 to be the start of the current dry period for eastern Australia.

# How much water is in the storages?

Storage volume: Wyangala and Carcoar storages as at 3 January 2021

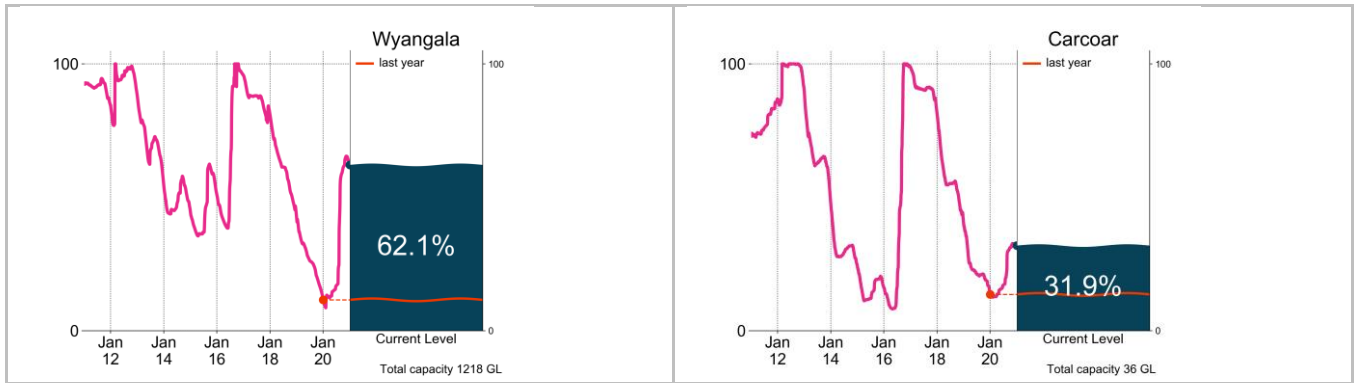


Figure 3: Current total storage (% of total capacity) compared to the last ten years

Source: [BoM water storages dashboard](#)

## Who is the water for?

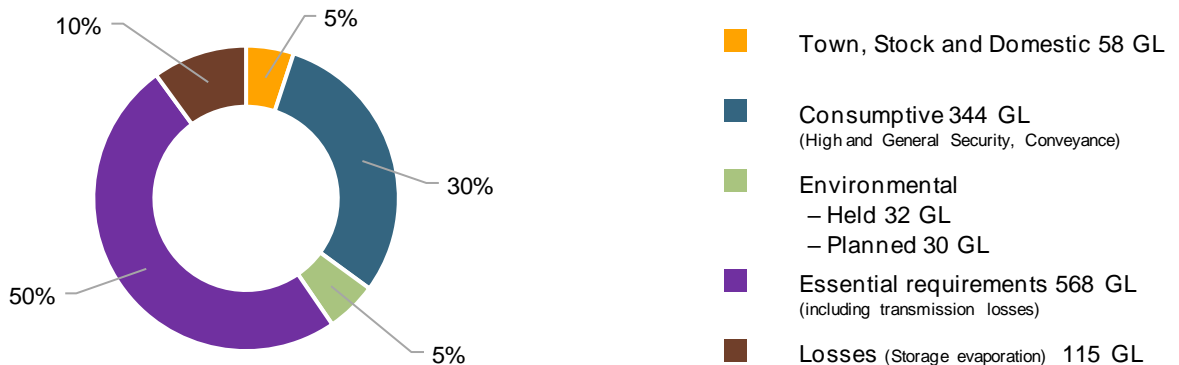


Figure 4: Volumes of water allocated (% of total) for the December 2020 to May 2023 (as at 8 December 2020)

Source: [NSW Department of Planning, Industry and Environment](#)

NB: Allocation information shown here is water allocated for various purposes as at 8 December 2020. It does not represent remaining available allocated water as it does not allow for water used, traded or new storage inflows (in excess of minimum assumptions).

Table 1: Allocation announcements (%) and market prices – selected licence categories as at 4 January 2021

Licence category	Announced allocation	Historic comparison (same time of year)	Entitlement prices (monthly median)	Allocation price (median – last 7 days)
Stock & Domestic	100%	Same as most years	n/a	\$100/ML*
High Security	100%	Same as most years	n/a	
General Security	38%	Highest allocations for this time of year since 2016–17	n/a	
Average Carryover (General Security)	6%	14.9% available last year	n/a	

\*Indicative - limited trades

Source: [NSW Department of Planning, Industry and Environment](#) and [BoM water markets dashboard](#)

FIND OUT MORE

For more information email [water@bom.gov.au](mailto:water@bom.gov.au)



With the exception of logos, photography and data referenced as being from other organisations, this publication is licensed under a Creative Commons Attribution 3.0 Australia Licence. The terms and conditions of the licence are available at <http://creativecommons.org/licenses/by/3.0/au>. Attribution for this publication should be: © Commonwealth of Australia (Bureau of Meteorology) 2021.