



Water Reporting Summary - NSW Border Rivers Catchment

1 April 2020



Overview

- In the last 30 days, most of the NSW Border Rivers catchment received 50 to 100 mm of rainfall. A small area in the south of the catchment received up to 200 mm of rainfall, however areas near Tenterfield and Goondiwindi received less than 50 mm of rainfall (Figure 1). As a result, the total area-average rainfall across the catchment was 64 mm over the last 30 days. This recent rainfall is in the context of the extended dry period since January 2017 with rainfall across the NSW Border Rivers catchment mainly being either very much below average or lowest on record (Figure 2).
- Recent rainfall has improved soil moisture conditions but has not translated into significantly higher runoff and inflows into storages. As a result, there is a continuation of Drought Stage 4 conditions for the NSW Border Rivers catchment. For Stage 4, there has been extremely low water resources and extreme drought with restrictions in place to manage remaining resources to meet critical human needs (NSW DPIE). Consequently, there have been low or no allocations for some entitlement holders (Figure 3 and Table 1).
- Announced allocations for general security A and B class entitlements are currently 0%. For this time of year this is unprecedented for class A and has occurred three times in the last ten years for class B.

Recent conditions

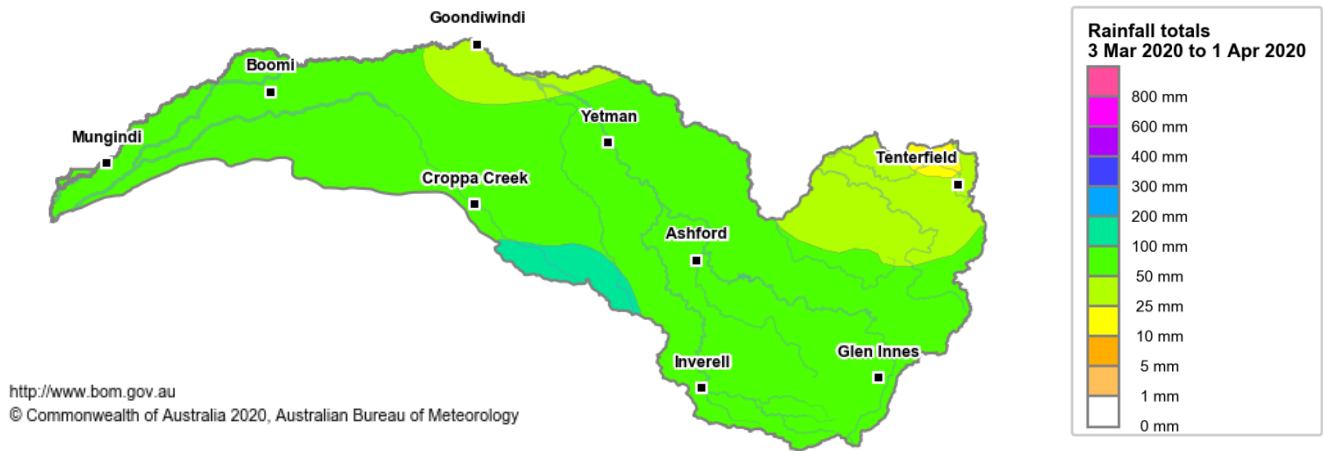


Figure 1: Rainfall totals for the last 30 days

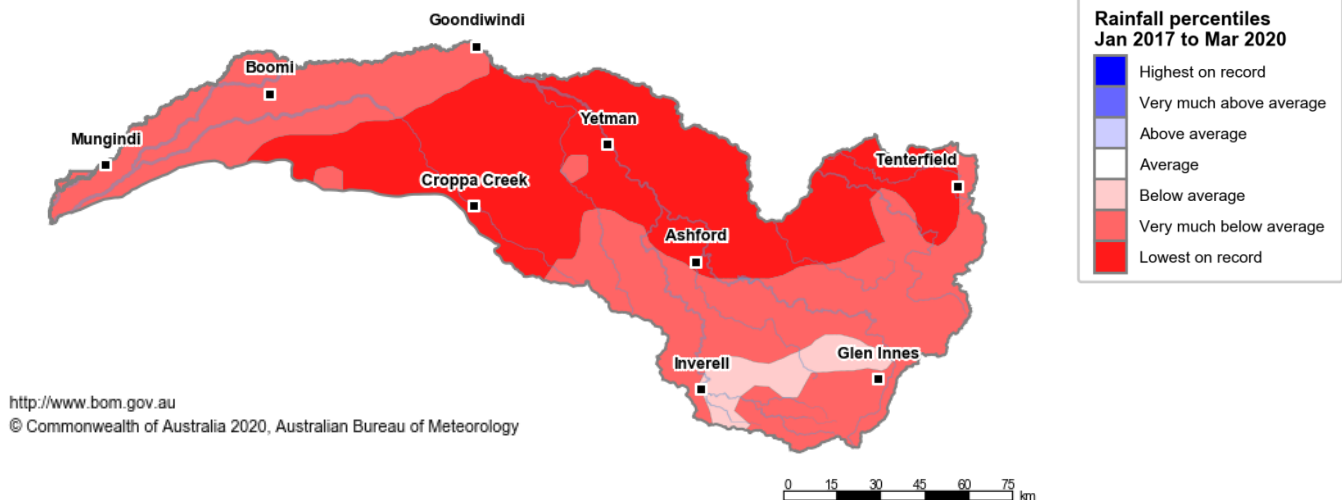


Figure 2: Rainfall percentiles since January 2017 (Compared to 1900-2019 long-term average). Note: Rainfall percentiles for the period from January 2017 are shown as the Bureau of Meteorology considers January 2017 to be the start of the current dry period for eastern Australia.

How much water is in the storages?

Combined total storage (NSW share*): 52 GL (as at 1 April 2020)

*Pindari storage and New South Wales' 57% share of Glenlyon storage

Source: [Water Allocation Statement- NSW Department of Planning, Industry and Environment](#)

Storage	% Full (total storage capacity as at 1/4/2020)	% Full (same time last year)
Pindari	10%	6%
Glenlyon	14%	13%

Source: [BoM water storages dashboard](#)

Who is the water for?

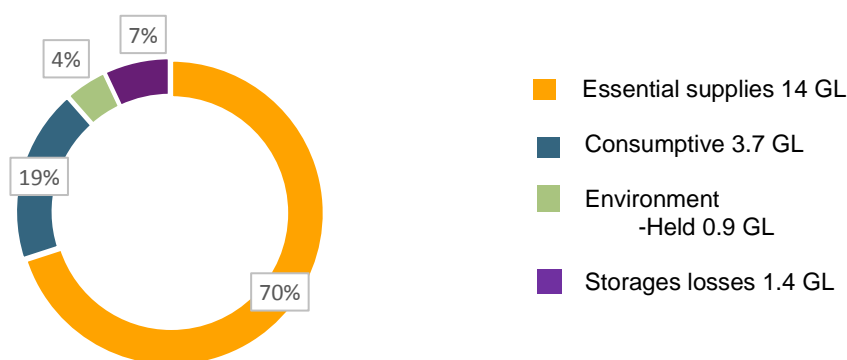


Figure 3: Volumes of water held in accounts for the 2019-20 water year (as at 1 December 2019)

Source: [Water Allocation Statement- NSW Department of Planning, Industry and Environment](#)

NB: Allocation information shown here is water allocated, but not necessarily available, for various purposes as at 1 December 2019. Due to Drought Stage 4 conditions, the extremely limited available water is being directed towards critical human needs.

Water allocation figures shown here differ to those on WaterNSW's [Water Insights](#), which shows estimated water available over a two-year planning period (2019 to 2021).

Table 1: Allocation announcements (%) - Selected licence categories as at 1 April 2020

Licence category	Current announced allocation	Historic comparison (same time of year)
Stock & Domestic, Local Utility	100%	Same as most years
NSW Border Rivers High Security	100% (drought suspension)	First time drought suspension in last ten years
NSW Border Rivers General Security - A	0%	Lowest on record (since 2009-10)
NSW Border Rivers General Security - B	0%	0% has occurred in three out of the last ten years
Average Carryover (General Security)	1% General Security - A 2% General Security - B	3% last year 58% last year

Source: [Allocation dashboard- NSW Department of Planning, Industry and Environment](#)

FIND OUT MORE

For more information email water@bom.gov.au



With the exception of logos, photography and data referenced as being from other organisations, this publication is licensed under a Creative Commons Attribution 3.0 Australia Licence. The terms and conditions of the licence are available at <http://creativecommons.org/licenses/by/3.0/au>. Attribution for this publication should be: © Commonwealth of Australia (Bureau of Meteorology) 2020.