



Water Reporting Summary - NSW Murray and Lower Darling Catchments

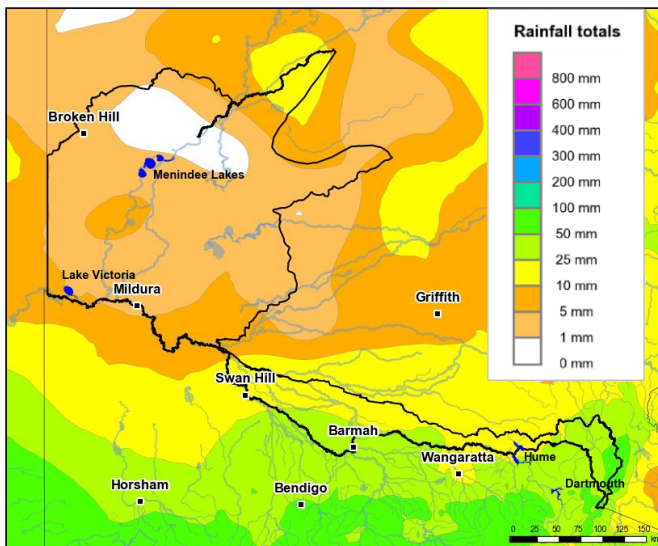
1 June 2020



Overview

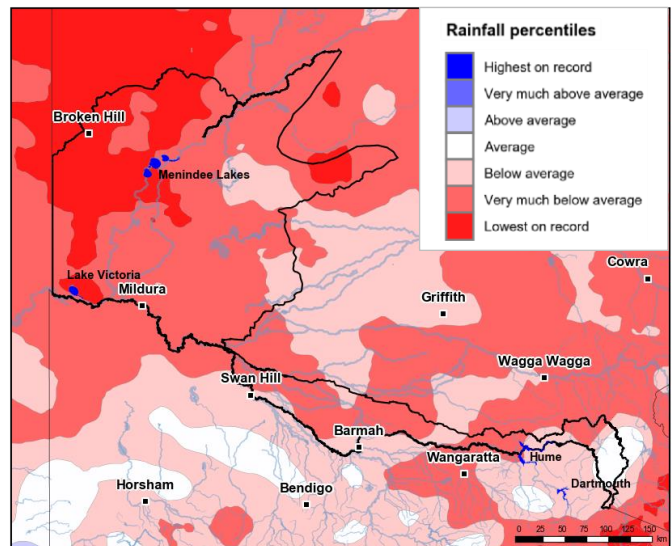
- In the past month, most of the NSW Murray and Lower Darling catchments received less than 25 mm of rainfall. Although parts of the upper NSW Murray catchment received 25 to 100 mm of rainfall, there was no rainfall immediately upstream of the Menindee Lakes (Figure 1). The total area-average rainfall across both catchments was 7 mm. This recent patchy rainfall is in the context of the extended dry period since January 2017, particularly for the central parts of the NSW Murray catchment and the Lower Darling catchment, with rainfall being mainly very much below average or lowest on record (Figure 2).
- Recent rainfall has improved soil moisture and translated into runoff and inflows into storages (Figure 3). However, Drought Stage 2 conditions remain in the NSW Murray and Lower Darling catchments. In Drought Stage 2 (Emerging drought or drought recovery), there has been limited water resources and multiple years of low flows (NSW DPIE). As a consequence, allocations for some entitlement holders remain low (Figure 4 and Table 1).
- General security allocations in the NSW Murray and Lower Darling catchments remain at 3% and 30% respectively. As the end of the water year nears, allocation prices have declined significantly (currently \$200 per ML) compared to their peak of over \$800 per ML in January 2020 (Table 1).
- For information on 1 July 2020 allocation outlooks, please refer to the [NSW Murray and Lower Darling Water Allocation Statement \(15 May 2020\)](#).

Recent conditions



<http://www.bom.gov.au>
© Commonwealth of Australia 2020, Bureau of Meteorology

Figure 1: Rainfall totals for the last 30 days
(3 May to 1 June 2020)



<http://www.bom.gov.au>
© Commonwealth of Australia 2020, Bureau of Meteorology

Figure 2: Rainfall percentiles since January 2017 (Compared to 1900-2019 long-term average) (Jan 2017 to May 2020)

Note: Rainfall percentiles for the period from January 2017 are shown as the Bureau of Meteorology considers January 2017 to be the start of the current dry period for eastern Australia.

How much water is in the storages?

Combined total storage (NSW share*): 1,340 GL (as at end April 2020)

*New South Wales' share of Dartmouth, Hume, Lake Victoria and Menindee Lakes storages

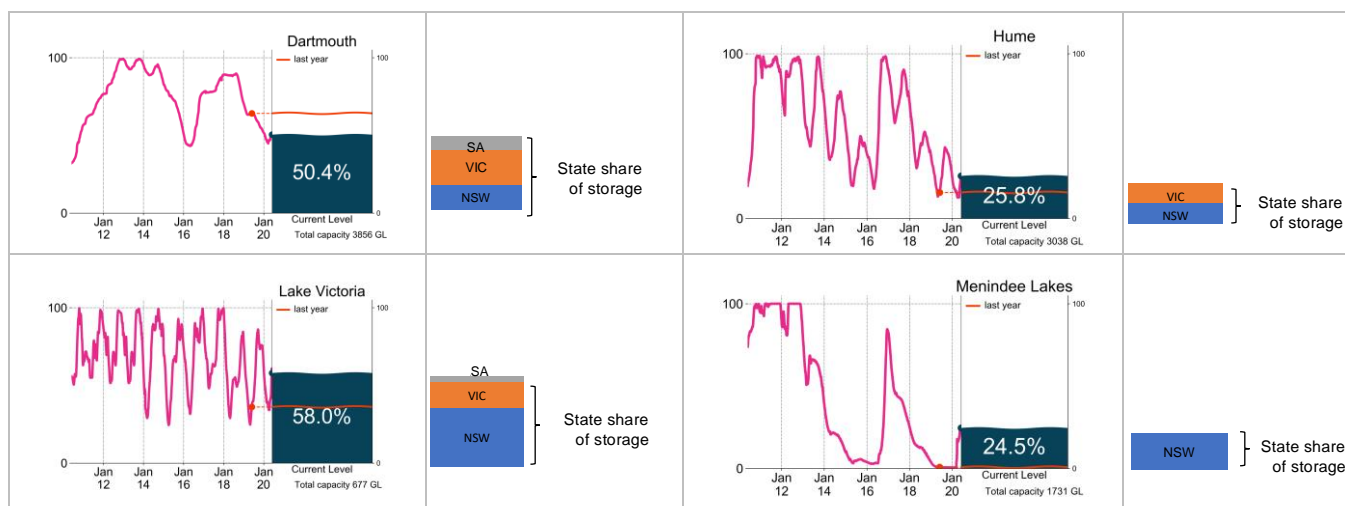


Figure 3: Current total storage (% of total capacity) as at 1 June 2020 compared to the last ten years (State shares updated end April 2020)

Source: [BoM water storages dashboard](#) and [MDBA](#)

Who is the water for?

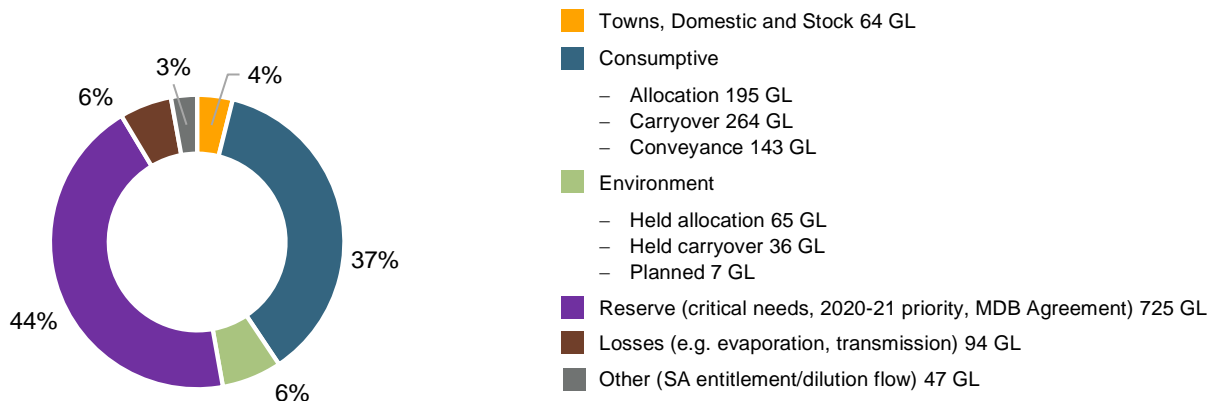


Figure 4: Volumes of water allocated (% of total) for the 2019-20 water year (as at 15 May 2020)

Source: [NSW Department of Planning, Industry and Environment](#)

NB: Allocation information shown here is water allocated for various purposes as at 15 May 2020. It does not represent remaining available allocated water as it does not allow for water used, traded or new storage inflows (in excess of minimum assumptions). Water allocation figures shown here differ to those on WaterNSW's [Water Insights](#), which shows estimated water available over a two-year planning period (2019 to 2021).

Table 1: Allocation announcements (%) and market prices – Selected licence categories as at 1 June 2020

Licence category	Announced allocation	Historic comparison (same time of year)	Entitlement Prices (monthly median)	Allocation Price (median - last 7 days)
Stock and Domestic	100%	Same as most years	n/a	\$50/ML* (NSW Murray-above Barmah Choke)
NSW Murray High Security	97%	Same as most years	\$9,400/ML	
Lower Darling High Security	100%	Same as most years	n/a	\$200/ML (NSW Murray-below Barmah Choke)
NSW Murray General Security	3%	With carryover, lowest available water since 2009	\$1,820/ML	
Lower Darling General Security	30%	Third lowest allocation in the last ten years	n/a	n/a (Lower Darling)
Average Carryover (General Security)	18% (NSW Murray) 19% (Lower Darling)	32% last year (NSW Murray) 15% last year (Lower Darling)	n/a	

*Indicative - limited trade data

Source: [NSW Department of Planning, Industry and Environment](#) and [BoM water markets dashboard](#)

FIND OUT MORE

For more information email water@bom.gov.au



With the exception of logos, photography and data referenced as being from other organisations, this publication is licensed under a Creative Commons Attribution 3.0 Australia Licence. The terms and conditions of the licence are available at <http://creativecommons.org/licenses/by/3.0/au>. Attribution for this publication should be: © Commonwealth of Australia (Bureau of Meteorology) 2020.