



Water Reporting Summary - Murrumbidgee Catchment

21 January 2020



Overview

- Most of the Murrumbidgee catchment received 10 to 50 mm rainfall in the last 30 days but mainly concentrated over the last two days. The exceptions were the areas around Hay and Balranald which received less than 10 mm over the last 30 days, and Tumut which received up to 100 mm. The catchment area average rainfall was 28 mm (Figure 1). This patchy recent rainfall is in the context of the extended dry period since January 2017 with rainfall across the Murrumbidgee catchment being very much below average or lowest on record (Figure 2).
- Low storage volumes and inflows have led to low allocation volumes for some entitlement holders (Figure 3). Allocations for general security entitlement holders are currently 6%, which is the lowest level for this time of year since 2007-08 (Table 1).

Recent conditions

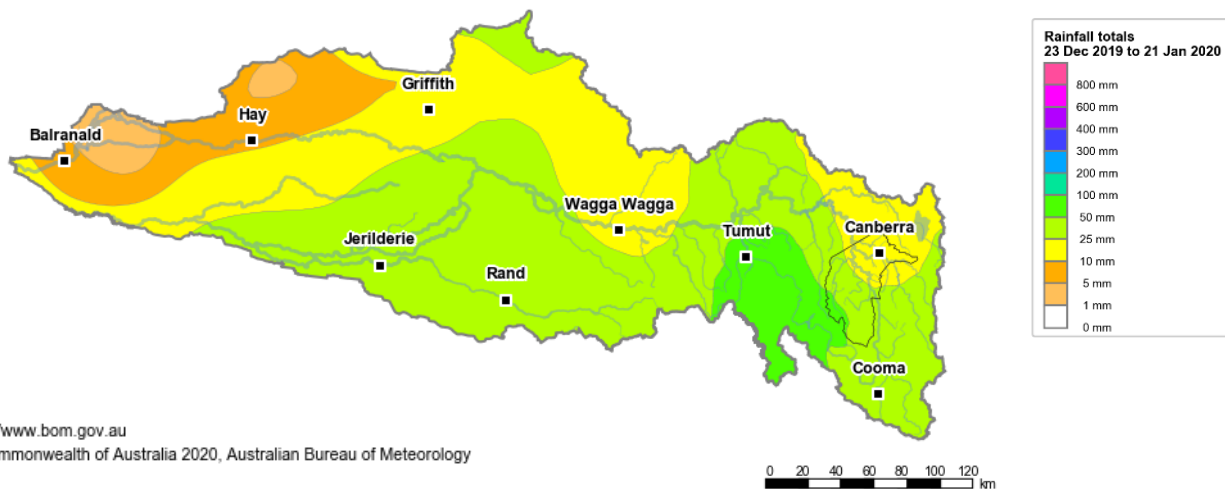


Figure 1: Rainfall totals for the last 30 days

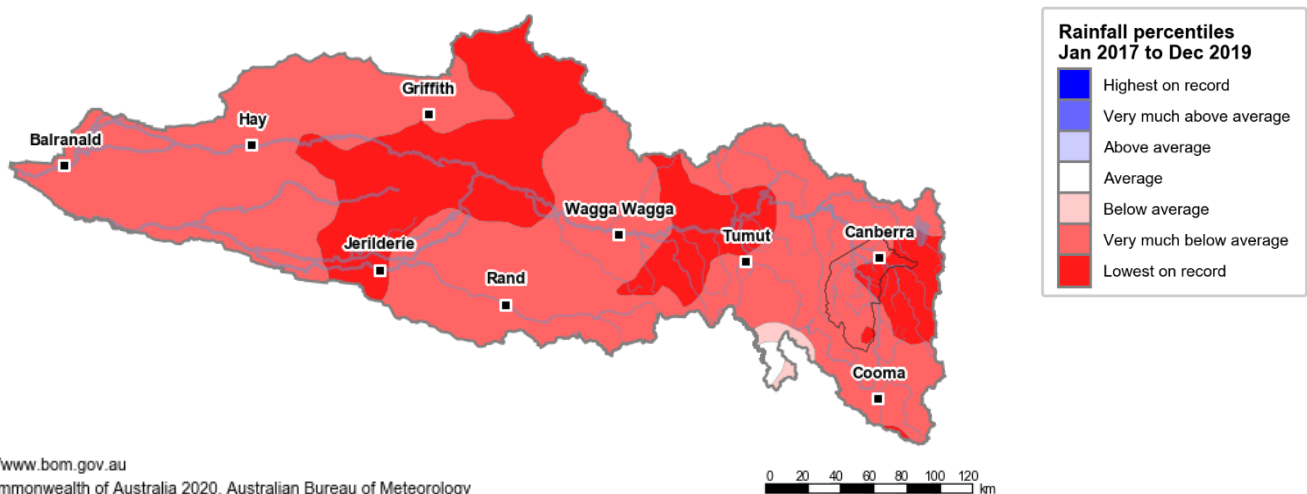


Figure 2: Rainfall percentiles since January 2017 (Compared to 1900-2019 long-term average). Note: Rainfall percentiles for the period from January 2017 are shown as the Bureau of Meteorology considers January 2017 to be the start of the current dry period for eastern Australia.

How much water is in the storages (as at 21 January 2020)?

Storage volume: Burrinjuck, Blowering storages

Combined total storage	921 GL
Combined accessible storage*	894 GL
%Full (total storage capacity)	35%
%Full (same time last year)	37%

*Accessible storage volume is the volume of water stored excluding dead storage (water stored below the level of the lowest outlet)

Source: [BoM water storages dashboard](#)

Who is the water for?

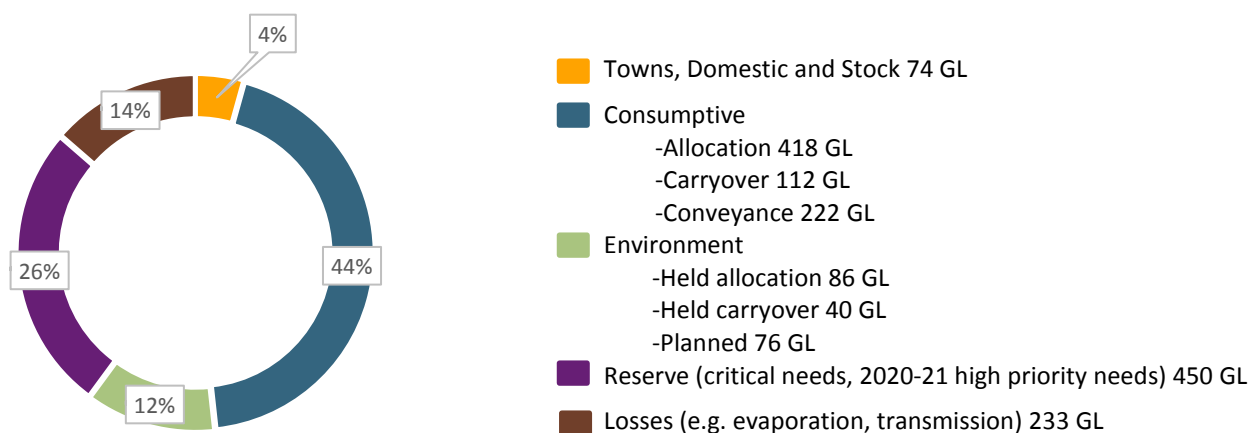


Figure 3: Volumes of water allocated (% of total) for the 2019-20 water year (as at 21 January 2020)

Source: [Water Allocation Statement- NSW Department of Planning, Industry and Environment](#)

NB: Allocation information shown here is water allocated for various purposes as at 21 January 2019. It does not represent remaining available allocated water as it does not allow for water used, traded or new storage inflows (in excess of minimum assumptions). Water allocation figures shown here differ to those on WaterNSW's [Water Insights](#), which shows estimated water available over a two-year planning period (2019 to 2021).

Table 1: Allocation announcements (%) - Selected licence categories as at 21 January 2020

NSW Murrumbidgee licence category	Current announced allocation	Historic comparison (same time of year)
Stock and Domestic	100%	Same as most years
High Security	95%	Same as most years
General Security	6%	Lowest since 2007-08
Average Carryover (General Security)	8%	13% lower than last year

Source: [Allocation dashboard- NSW Department of Planning, Industry and Environment](#)

FIND OUT MORE

For more information email water@bom.gov.au



With the exception of logos, photography and data referenced as being from other organisations, this publication is licensed under a Creative Commons Attribution 3.0 Australia Licence. The terms and conditions of the licence are available at <http://creativecommons.org/licenses/by/3.0/au>. Attribution for This publication should be: © Commonwealth of Australia (Bureau of Meteorology) 2020.