



# Water Reporting Summary - Murrumbidgee Catchment

15 July 2020



## Overview

- In the last 30 days, the central parts of the Murrumbidgee catchment received 25 to 50 mm of rainfall while the downstream parts around Balranald received less than 25 mm. Most of the upstream areas received 50 to 100 mm, while those near Blowering Dam received up to 200 mm of rainfall (Figure 1). The total area-average rainfall for the catchment was 48 mm. This recent patchy rainfall is in the context of the extended dry period since January 2017 with rainfall across the Murrumbidgee catchment mainly below average or very much below average although the area near Cooma is lowest on record (Figure 2).
- Root zone soil moisture was average in most of the Murrumbidgee catchment during July, with the patchy rainfall over the last month translating into some inflows into storages (Figures 3).
- Allocations for general security entitlement holders are currently 14%, which for the time of year is the highest allocation in the past three years (Figure 4 and Table 1).
- Allocation prices have started the 2020-21 water year higher than last month (\$300 per ML compared to \$200 per ML) but are well below their peak of \$750 per ML in January 2020

## Recent conditions

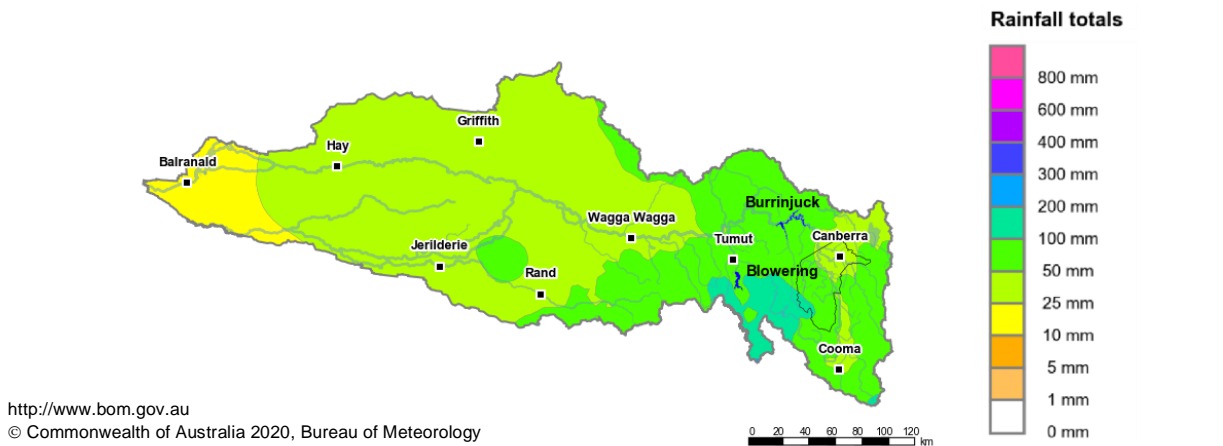


Figure 1: Rainfall totals for the last 30 days (16 June to 15 July 2020)

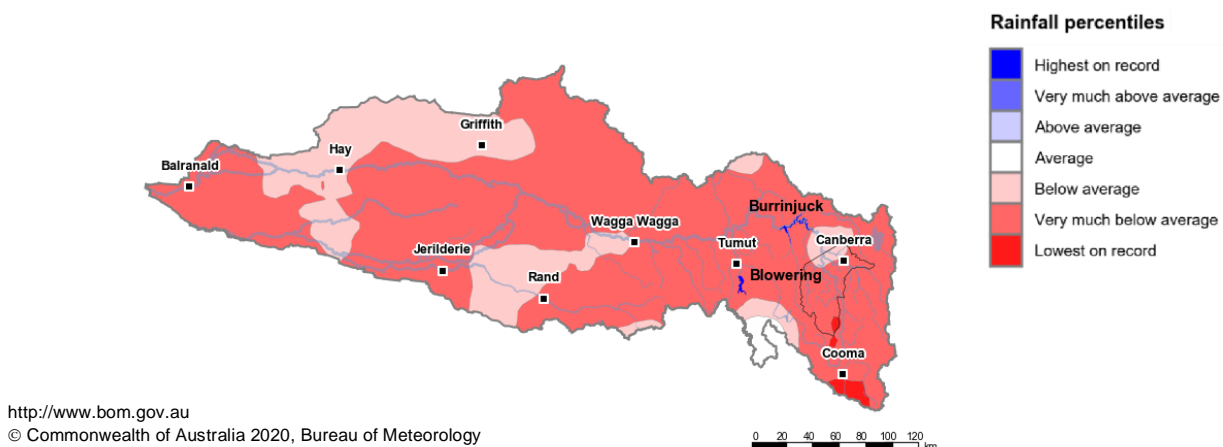


Figure 2: Rainfall percentiles since January 2017 (Compared to 1900-2019 long-term average) (Jan 2017 to June 2020)

Note: Rainfall percentiles for the period from January 2017 are shown as the Bureau of Meteorology considers January 2017 to be the start of the current dry period for eastern Australia.

## How much water is in the storages?

**Storage volume:** Burrinjuck, Blowering storages as at 15 July 2020

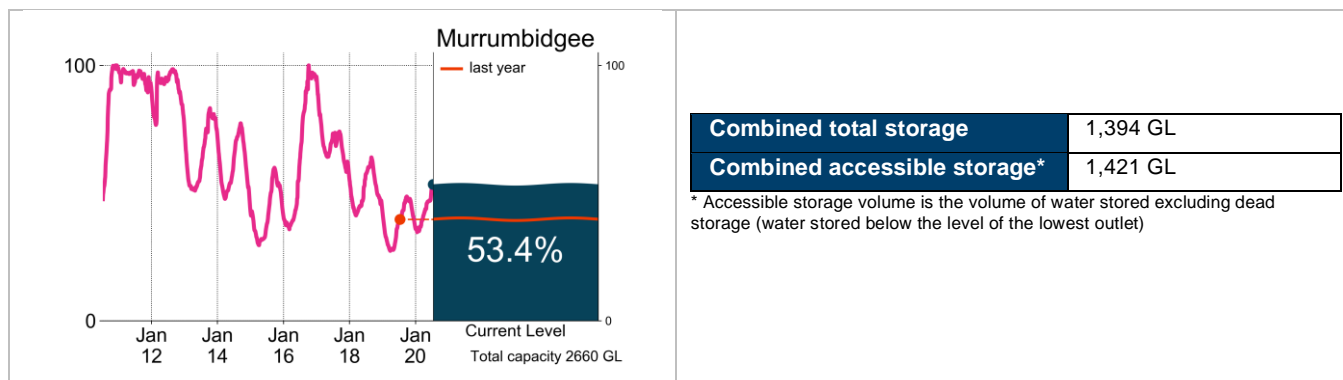


Figure 3: Current total storage (% of total capacity) compared to the last ten years

Source: [BoM water storages dashboard](#)

## Who is the water for?

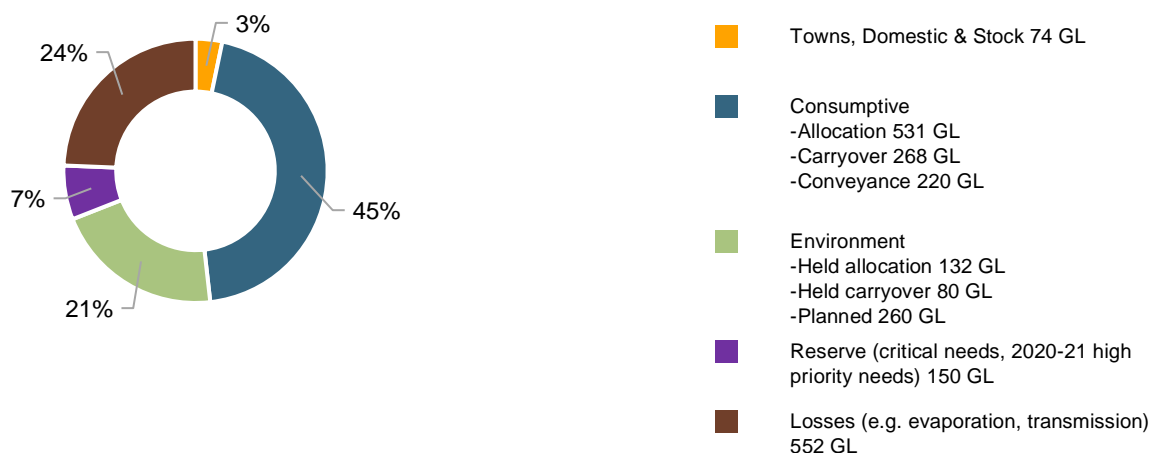


Figure 4: Volumes of water allocated (% of total) for the 2020-21 water year (as at 15 July 2020)

Source: [NSW Department of Planning, Industry and Environment](#)

NB: Allocation information shown here is water allocated for various purposes as at 15 July 2020. It does not represent remaining available allocated water as it does not allow for water used, traded or new storage inflows (in excess of minimum assumptions). Water allocation figures shown here differ to those on WaterNSW's [Water Insights](#), which shows estimated water available over a two-year planning period (2020 to 2022).

Table 1: Allocation announcements (%) and market prices – Selected licence categories as at 15 July 2020

Licence category	Announced allocation	Historic comparison (same time of year)	Entitlement Prices (monthly median)	Allocation Price (median - last 7 days)
Stock & Domestic	100%	Same as most years	n/a	\$300/ML
High Security	95%	Same as most years	\$4,000/ML*	
General Security	14%	Third lowest allocation for this time of year in the last ten years	\$2,000/ML*	
Average Carryover (General Security)	18%	10% higher than the previous year	n/a	

\*Indicative - limited trades

Source: [NSW Department of Planning, Industry and Environment](#) and [BoM water markets dashboard](#)

FIND OUT MORE

For more information email [water@bom.gov.au](mailto:water@bom.gov.au)



With the exception of logos, photography and data referenced as being from other organisations, this publication is licensed under a Creative Commons Attribution 3.0 Australia Licence. The terms and conditions of the licence are available at <http://creativecommons.org/licenses/by/3.0/au>. Attribution for this publication should be: © Commonwealth of Australia (Bureau of Meteorology) 2020.