



Water Reporting Summary - Murrumbidgee Catchment

17 August 2020



Overview

- In the last 30 days, downstream parts of the Murrumbidgee catchment received less than 50 mm of rainfall, while central parts, primarily east of Wagga Wagga, received up to 100 mm. Most of the upstream areas received up to 200 mm, with the areas around Blowering Dam and east of Cooma receiving up to 400 mm (Figure 1). The total area-average rainfall for the catchment was 76 mm. This recent rainfall is in the context of the extended dry period since January 2017 with rainfall across the Murrumbidgee catchment mainly below average or very much below average (Figure 2).
- Root zone soil moisture was above to very much above average in areas east of Cooma, and mostly average elsewhere in the Murrumbidgee catchment during August, with recent rainfall translating into some inflows into storages (Figure 3).
- Allocations for general security entitlement holders are currently 32% (an increase of 16% since 3 August), which for this time of year is the highest since 2016-17 (Figure 4 and Table 1).
- Allocation prices have decreased since the start of the 2020-21 water year (currently \$275 per ML compared to \$300 per ML in early July) and are well below their peak of \$750 per ML in January 2020.

Recent conditions

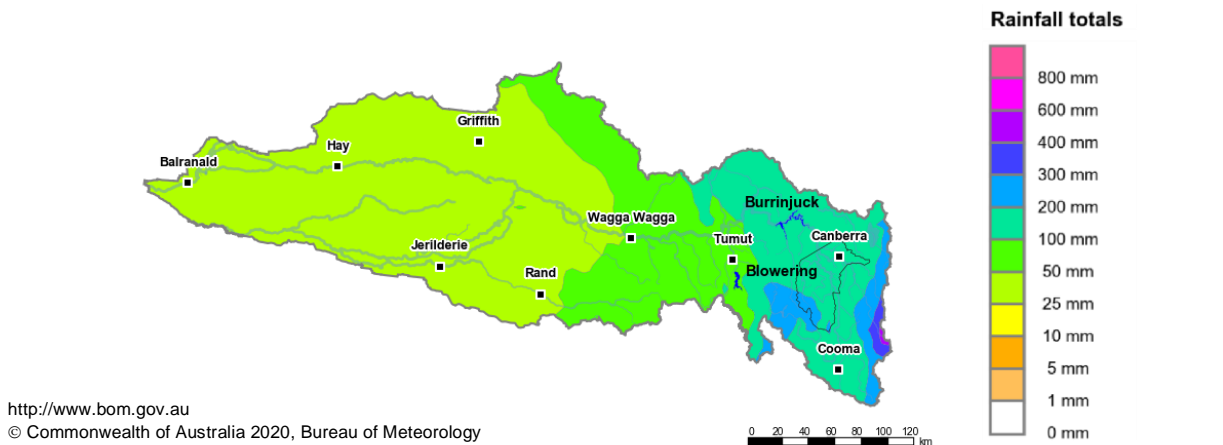


Figure 1: Rainfall totals for the last 30 days (19 July to 17 August 2020)

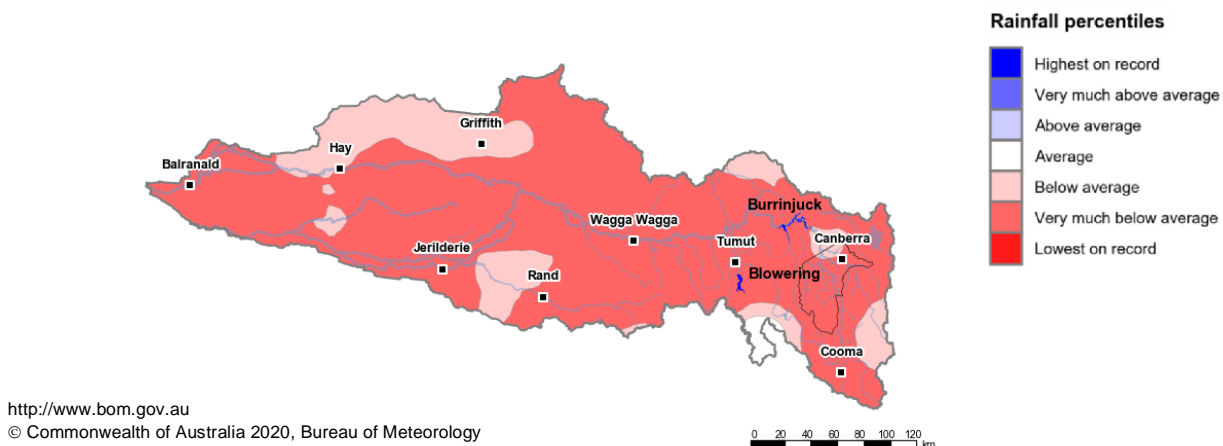


Figure 2: Rainfall percentiles since January 2017 (Compared to 1900-2019 long-term average) (January 2017 to July 2020)

Note: Rainfall percentiles for the period from January 2017 are shown as the Bureau of Meteorology considers January 2017 to be the start of the current dry period for eastern Australia.

How much water is in the storages?

Storage volume: Burrinjuck, Blowering storages as at 17 August 2020

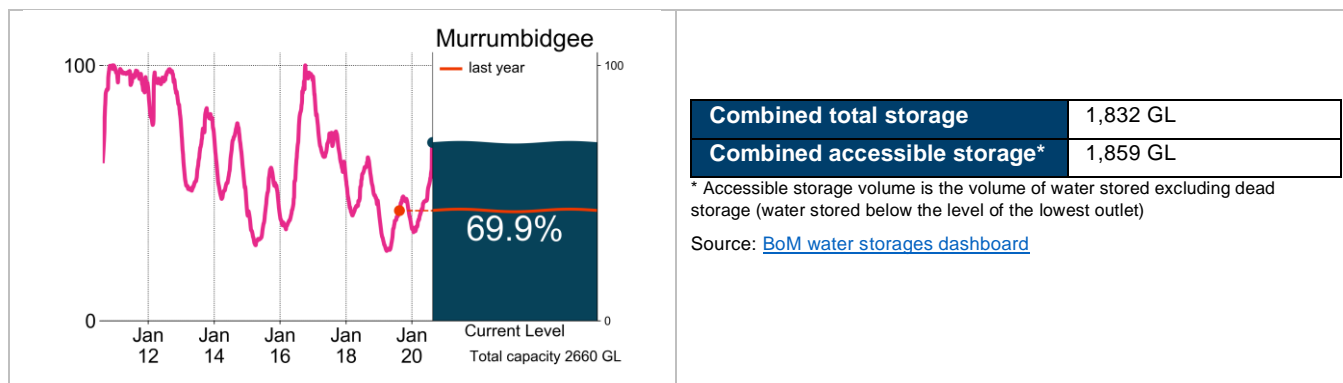


Figure 3: Current total storage (% of total capacity) compared to the last ten years.

Who is the water for?

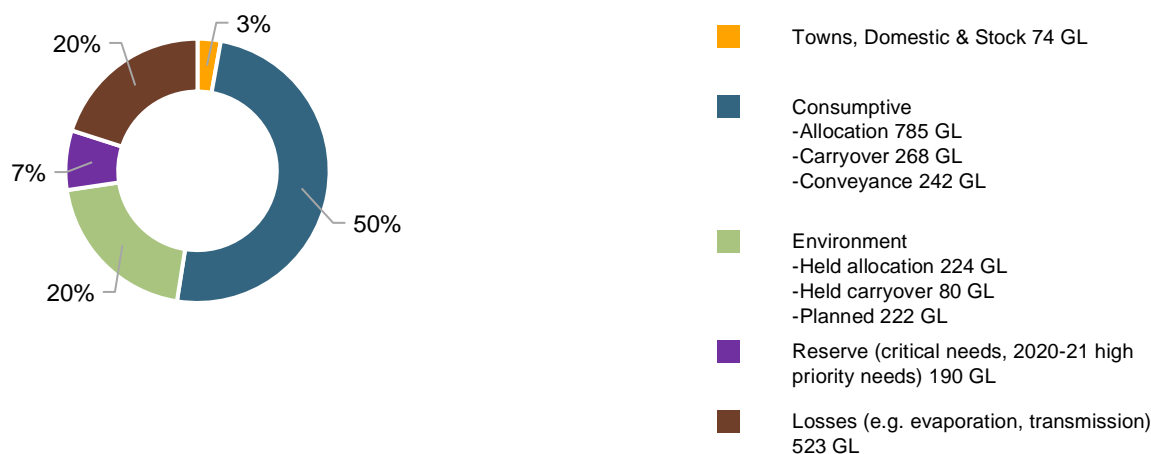


Figure 4: Volumes of water allocated (% of total) for the 2020-21 water year (as at 17 August 2020)

Source: [NSW Department of Planning, Industry and Environment](#)

NB: Allocation information shown here is water allocated for various purposes as at 17 August 2020. It does not represent remaining available allocated water as it does not allow for water used, traded or new storage inflows (in excess of minimum assumptions).

Table 1: Allocation announcements (%) and market prices – Selected licence categories as at 17 August 2020

Licence category	Announced allocation	Historic comparison (same time of year)	Entitlement Prices (monthly median)	Allocation Price (median - last 7 days)
Stock & Domestic	100%	Same as most years	n/a	\$ 275/ML
High Security	95%	Same as most years	n/a	
General Security	32%	Highest allocation for this time of year since 2016-17	\$ 1,850/ML*	
Average Carryover (General Security)	18%	10% higher than the previous year	n/a	

*Indicative - limited trades

Source: [NSW Department of Planning, Industry and Environment](#) and [BoM water markets dashboard](#)

FIND OUT MORE

For more information email water@bom.gov.au



With the exception of logos, photography and data referenced as being from other organisations, this publication is licensed under a Creative Commons Attribution 3.0 Australia Licence. The terms and conditions of the licence are available at <http://creativecommons.org/licenses/by/3.0/au>. Attribution for this publication should be: © Commonwealth of Australia (Bureau of Meteorology) 2020.