



Water Reporting Summary - Murrumbidgee Catchment

3 August 2020



Overview

- In the last 30 days, the central and downstream parts of the Murrumbidgee catchment received less than 25 mm of rainfall with areas around Balranald receiving less than 10 mm of rainfall. Most upstream areas east of Wagga Wagga received 25 to 200 mm, while some upstream areas near Cooma received up to 300 mm (Figure 1). The total area-average rainfall for the catchment was 36 mm. This recent rainfall is in the context of the extended dry period since January 2017 with rainfall across the Murrumbidgee catchment mainly below average or very much below average (Figure 2).
- Root zone soil moisture was average in most of the Murrumbidgee catchment during July, with rainfall over the last month translating into some inflows into storages (Figures 3).
- Allocations for general security entitlement holders are currently 16% (an increase of 2%), which for this time of year is the highest in the last three years (Figure 4 and Table 1).
- Allocation prices have decreased since the start of the 2020-21 water year (currently \$255 per ML compared to \$300 per ML in early July) and are well below their peak of \$750 per ML in January 2020.

Recent conditions

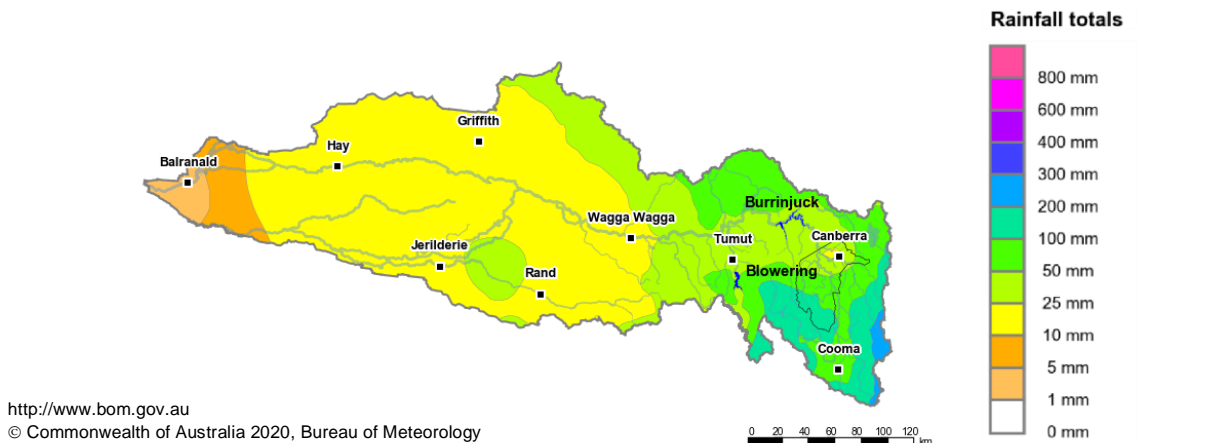


Figure 1: Rainfall totals for the last 30 days (5 July to 3 August 2020)

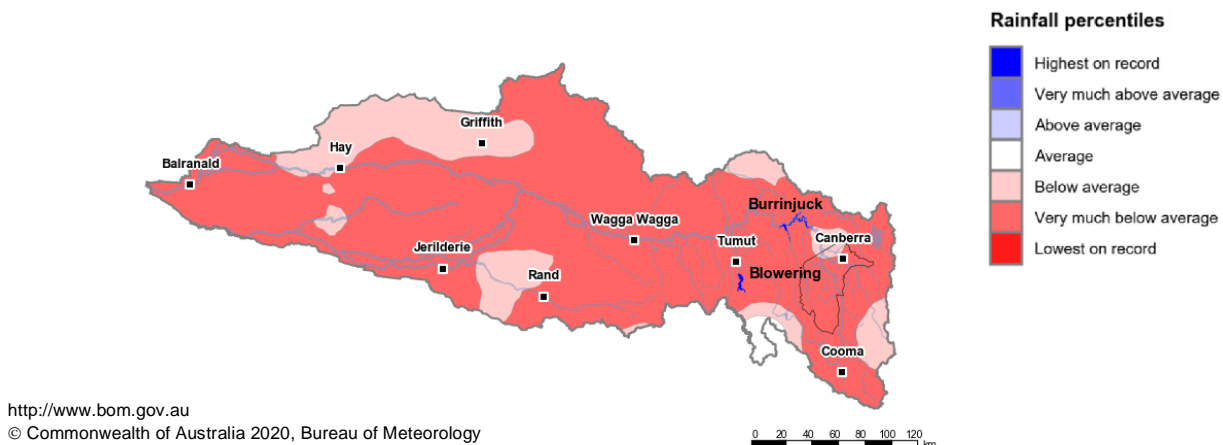


Figure 2: Rainfall percentiles since January 2017 (Compared to 1900-2019 long-term average) (January 2017 to July 2020)

Note: Rainfall percentiles for the period from January 2017 are shown as the Bureau of Meteorology considers January 2017 to be the start of the current dry period for eastern Australia.

How much water is in the storages?

Storage volume: Burrinjuck, Blowering storages as at 3 August 2020

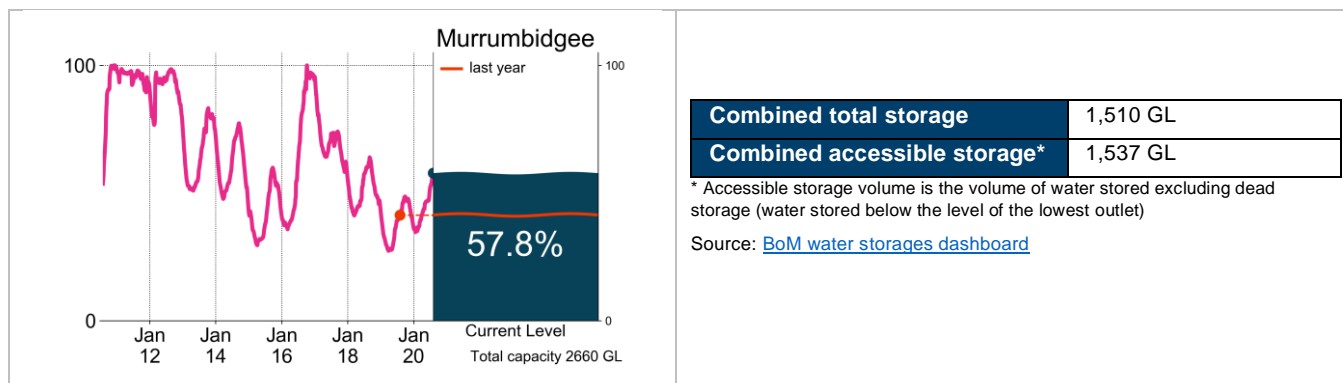


Figure 3: Current total storage (% of total capacity) compared to the last ten years.

Who is the water for?

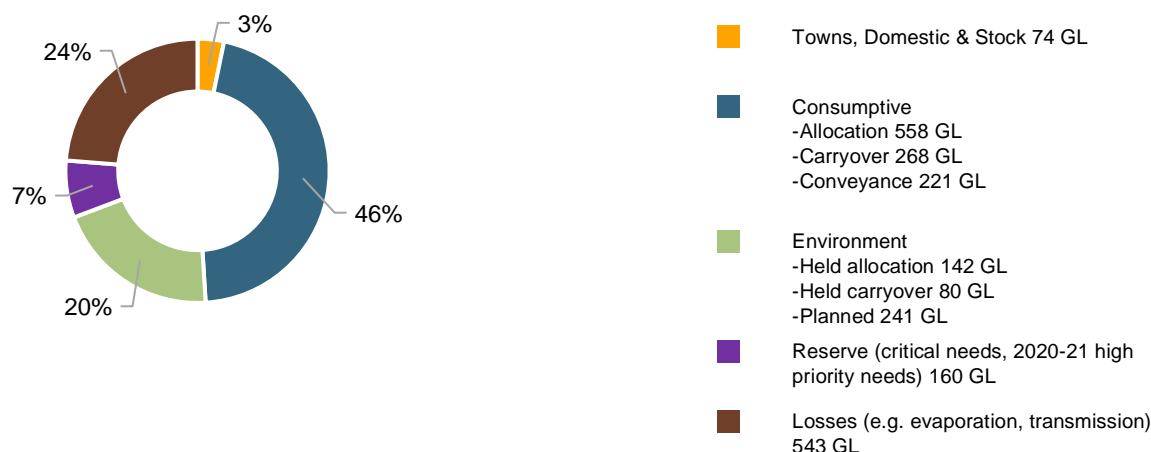


Figure 4: Volumes of water allocated (% of total) for the 2020-21 water year (as at 3 August 2020)

Source: [NSW Department of Planning, Industry and Environment](#)

NB: Allocation information shown here is water allocated for various purposes as at 3 August 2020. It does not represent remaining available allocated water as it does not allow for water used, traded or new storage inflows (in excess of minimum assumptions). Water allocation figures shown here differ to those on WaterNSW's [Water Insights](#), which shows estimated water available over a two-year planning period (2020 to 2022).

Table 1: Allocation announcements (%) and market prices – Selected licence categories as at 3 August 2020

Licence category	Announced allocation	Historic comparison (same time of year)	Entitlement Prices (monthly median)	Allocation Price (median - last 7 days)
Stock & Domestic	100%	Same as most years	n/a	\$255/ML
High Security	95%	Same as most years	n/a	
General Security	16%	Third lowest allocation for this time of year in the last ten years	\$1,827/ML*	
Average Carryover (General Security)	18%	10% higher than the previous year	n/a	

*Indicative - limited trades

Source: [NSW Department of Planning, Industry and Environment](#) and [BoM water markets dashboard](#)

FIND OUT MORE

For more information email water@bom.gov.au



With the exception of logos, photography and data referenced as being from other organisations, this publication is licensed under a Creative Commons Attribution 3.0 Australia Licence. The terms and conditions of the licence are available at <http://creativecommons.org/licenses/by/3.0/au>. Attribution for this publication should be: © Commonwealth of Australia (Bureau of Meteorology) 2020.