



# Water Reporting Summary - Goulburn Catchment

15 April 2020



Photo: Goulburn River August 2018 by Nils Versemann

## Overview

- In the last 30 days, the central and downstream parts of the Goulburn catchment received between 25 and 100 mm of rainfall, with the alpine region receiving up to 200 mm (Figure 1). The area-average rainfall for the catchment was 96 mm. However, this recent rainfall is in the context of the extended dry period since January 2017 with rainfall across the Goulburn catchment being below average to very much below average (Figure 2).
- The recent rainfall has improved soil moisture conditions but has done little to improve runoff and inflow into storages, resulting in relatively low allocation volumes (Figures 3 and 4). The last announced allocations (known as seasonal determinations) for the 2019-20 water year were provided on 1 April 2020. Announced allocations for high-reliability water shares have ended the water year at 80%, which is the lowest level for this time of year since 2008-09.
- Allocation prices remain historically high (\$270 per ML) due to relatively low water availability but have eased from their peak of \$700 per ML in January 2020 (Table 1).
- Looking forward to the 2020-21 summer, if storages receive similar inflows to those received during 2019-20, announced allocations would only be expected to reach 60% for high-reliability water shares. The next outlook update will be on 15 May 2020 (Northern Victoria Resource Manager).

## Recent conditions

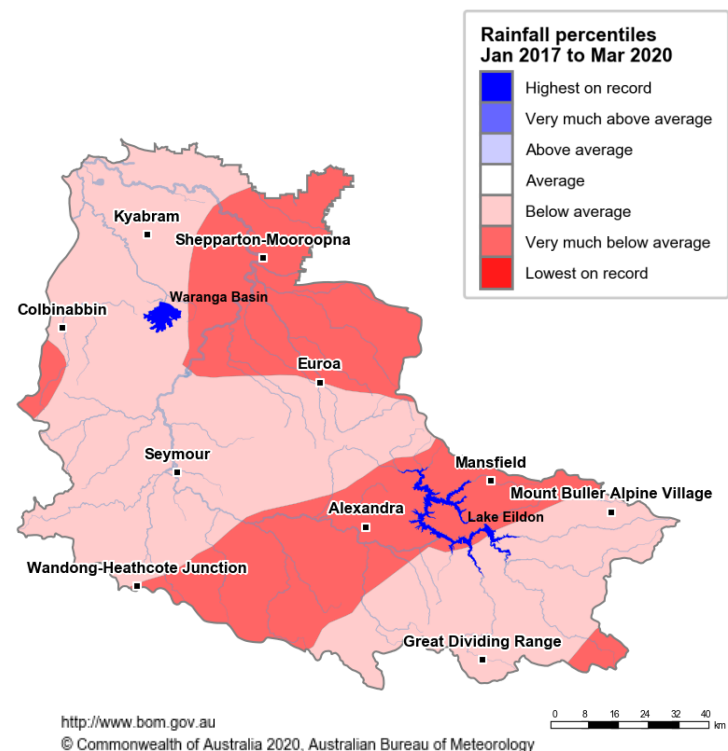
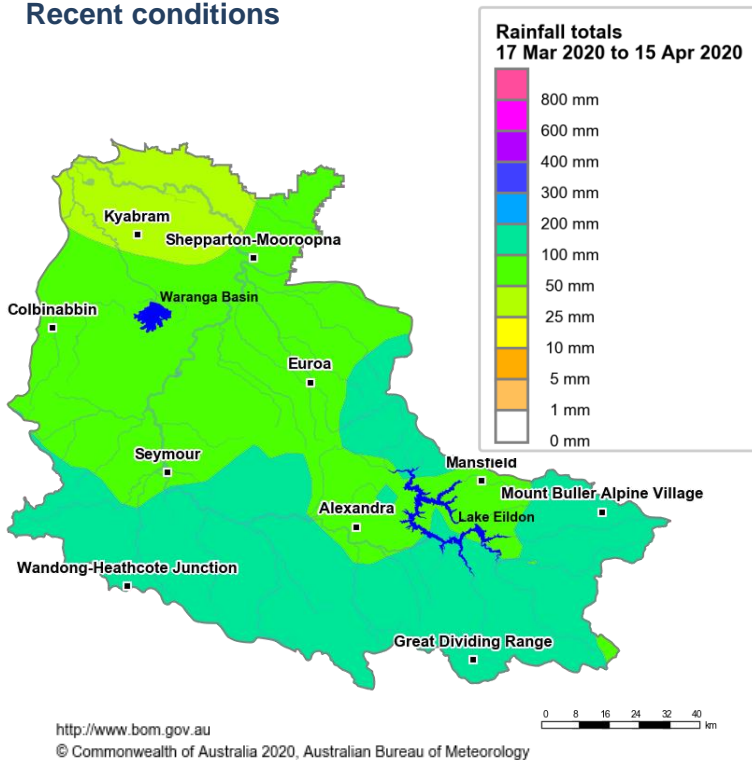


Figure 1: Rainfall totals for the last 30 days

Figure 2: Rainfall percentiles since January 2017  
(Compared to 1900-2019 long-term average)

Note: Rainfall percentiles for the period from January 2017 are shown as the Bureau of Meteorology considers January 2017 to be the start of the current dry period for eastern Australia.

## How much water is in the storages (as at 15 April 2020)?

Storage volume: Eildon and Waranga basin storages

<b>Combined total storage</b>	1,462 GL
<b>Combined accessible storage*</b>	1,251 GL

\*Accessible storage volume is the volume of water stored excluding dead storage (water stored below the level of the lowest outlet)

Source: [BoM water storages dashboard](#)

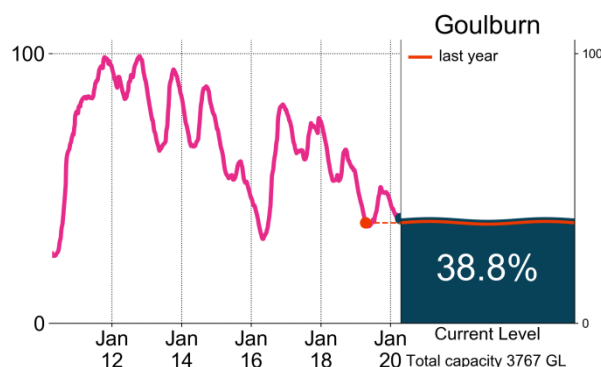


Figure 3: Current total storage (% of total capacity) compared to the last ten years

## Who is the water for?

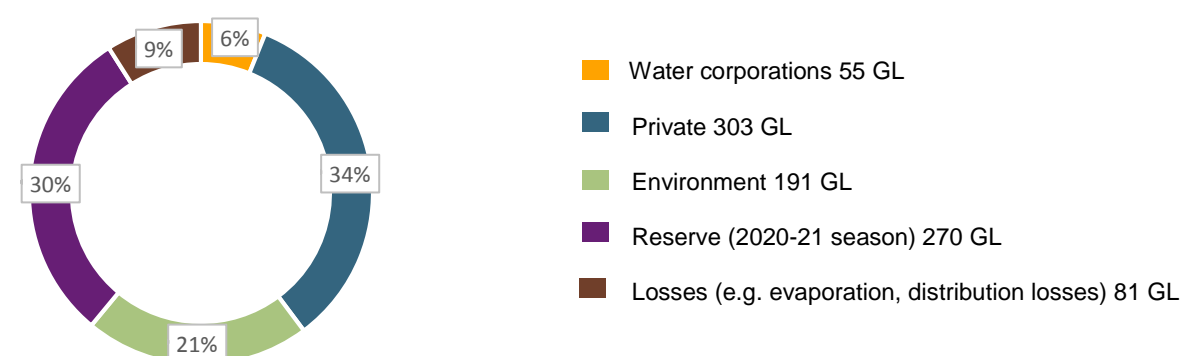


Figure 4: Volumes of water allocations currently available or remaining (% of total remaining) (last updated 1 April 2020)

Source: [Northern Victoria Resource Manager](#)

NB: Allocation information shows water available in allocation accounts and remaining commitments as at 1 April 2020. Information published by the Northern Victoria Resource Manager differs from information published on the Victorian Water Register as the former includes preliminary environmental water holder use and volumes of operational use by Goulburn-Murray Water private water shareholders.

Table 1: Allocation announcements (seasonal determinations) as at 1 April 2020 and market prices as at 15 April 2020

Licence category	Announced allocation	Historic comparison (same time of year)	Entitlement Prices (monthly median)	Allocation Price (median- last 7 days)
VIC Goulburn High-Reliability Water Share	80%	Lowest since 2008-09	\$4,700/ML	\$270/ML
VIC Goulburn Low-Reliability Water Share	0%	Same as most years	\$375/ML	

Source: [Victorian Water Register](#) and [BoM water markets dashboard](#)

FIND OUT MORE

For more information email [water@bom.gov.au](mailto:water@bom.gov.au)



With the exception of logos, photography and data referenced as being from other organisations, this publication is licensed under a Creative Commons Attribution 3.0 Australia Licence. The terms and conditions of the licence are available at <http://creativecommons.org/licenses/by/3.0/au>. Attribution for this publication should be: © Commonwealth of Australia (Bureau of Meteorology) 2020.