



Water Reporting Summary - Goulburn Catchment

1 April 2020



Photo: Goulburn River August 2018 by Nils Versemann

Overview

- In the last 30 days, most of the Goulburn catchment received 50 to 100 mm rainfall, with parts of the alpine region and the area near Wandong-Heathcote Junction receiving up to 200 mm, with the rain falling mainly in the first week of March (Figure 1). The area-average rainfall for the catchment was 80 mm. However, this recent rainfall is in the context of the extended dry period since January 2017 with rainfall across the Goulburn catchment being below average to very much below average (Figure 2).
- The recent rainfall has improved soil moisture conditions but has done little to improve runoff and inflow into storages, resulting in relatively low current allocation volumes (Figure 3). Looking forward to the 2020-21 summer, if storages receive similar inflows to those received during 2019-20, announced allocations (known as seasonal determinations) would only be expected to reach 60% for high-reliability water shares (Northern Victoria Resource Manager).
- Announced allocations for high-reliability water shares are currently 80%, which is the lowest level for this time of year since 2008-09 (Table 1).

Recent conditions

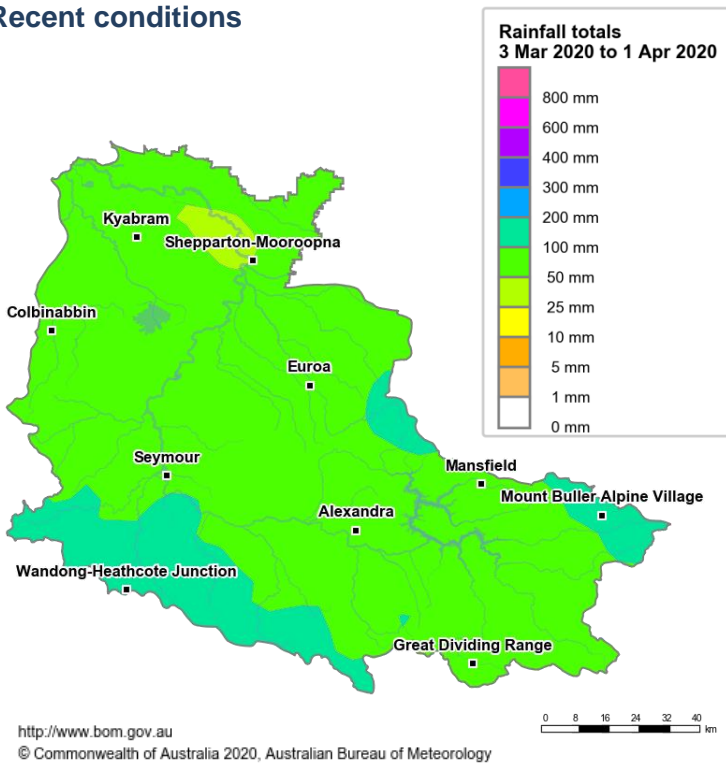


Figure 1: Rainfall totals for the last 30 days

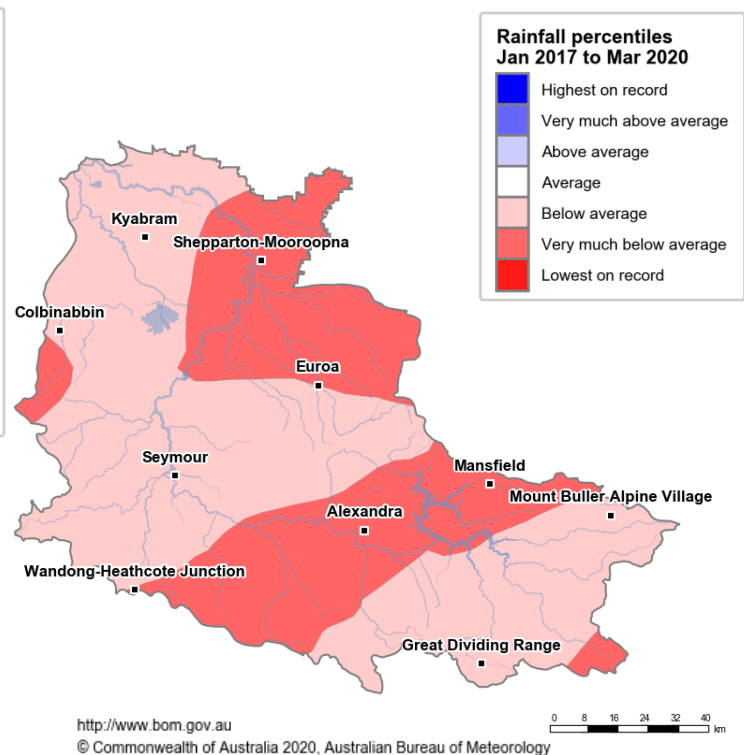


Figure 2: Rainfall percentiles since January 2017
(Compared to 1900-2019 long-term average)

Note: Rainfall percentiles for the period from January 2017 are shown as the Bureau of Meteorology considers January 2017 to be the start of the current dry period for eastern Australia.

How much water is in the storages (as at 1 April 2020)?

Storage volume: Eildon and Waranga basin storages

Combined total storage	1,430 GL
Combined accessible storage*	1,219 GL
%Full (total storage capacity)	38%
%Full (same time last year)	39%

*Accessible storage volume is the volume of water stored excluding dead storage (water stored below the level of the lowest outlet)

Source: [BoM water storages dashboard](#)

Who is the water for?

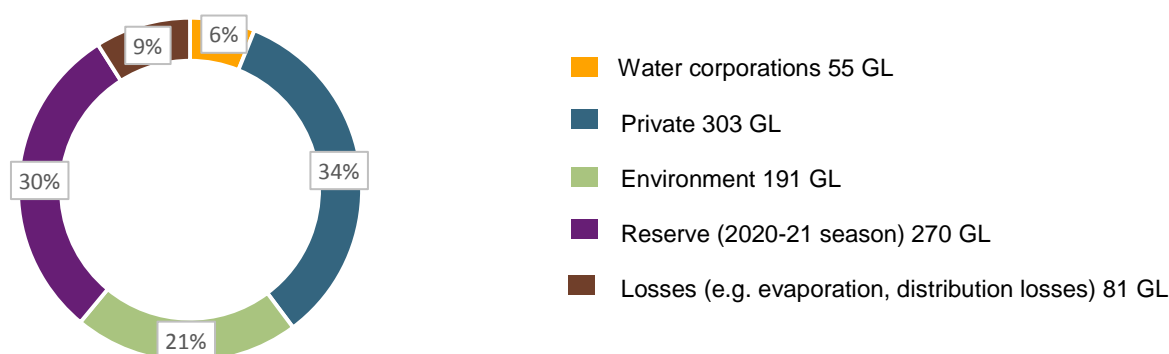


Figure 3: Volumes of water allocations currently available or remaining (% of total remaining) (as at 1 April 2020)

Source: [Northern Victoria Resource Manager](#)

NB: Allocation information shows water currently available in allocation accounts and remaining commitments. Information published by the Northern Victoria Resource Manager differs from information published on the Victorian Water Register as the former includes preliminary environmental water holder use and volumes of operational use by Goulburn-Murray Water private water shareholders.

Table 1: Allocation announcements (seasonal determinations) (%) - Selected licence categories as at 1 April 2020

Licence category	Current announced allocation	Historic comparison (same time of year)
VIC Goulburn High-Reliability Water Share	80%	Lowest since 2008-09
VIC Goulburn Low-Reliability Water Share	0%	Same as most years

Source: [Victorian Water Register](#)

FIND OUT MORE

For more information email water@bom.gov.au



With the exception of logos, photography and data referenced as being from other organisations, this publication is licensed under a Creative Commons Attribution 3.0 Australia Licence. The terms and conditions of the licence are available at <http://creativecommons.org/licenses/by/3.0/au>. Attribution for this publication should be: © Commonwealth of Australia (Bureau of Meteorology) 2020.