



Water Reporting Summary - Goulburn Catchment

3 August 2020

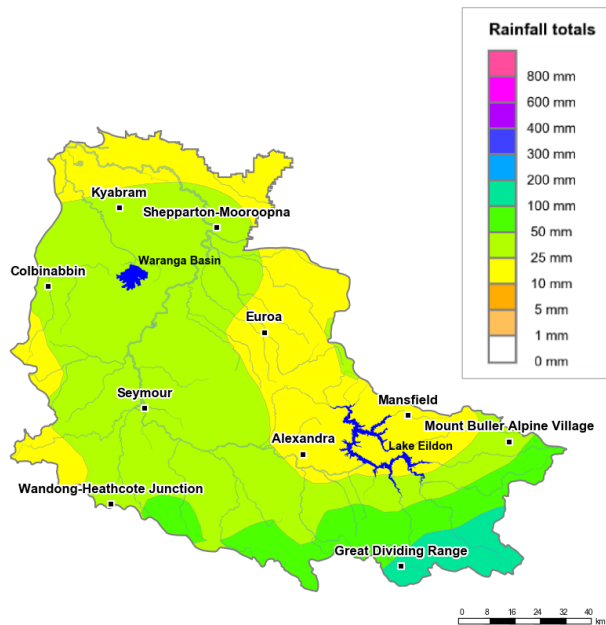


Photo: Goulburn River August 2018 by Nils Versemann

Overview

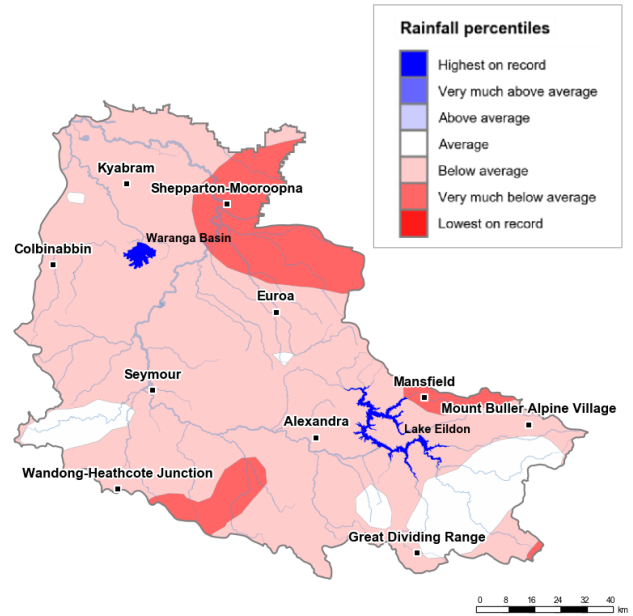
- In the last 30 days, most of the Goulburn catchment received 25 to 50 mm of rainfall, while eastern parts of the catchment near Lake Eildon only received 10 to 25 mm. In contrast, some upper parts of the catchment near Great Dividing Range receiving up to 200 mm of rain and snow (Figure 1). The area-average rainfall for the catchment was 36 mm. In parts of the catchment, this recent rainfall has offset some of the rainfall deficiency experienced over the last three years. Rainfall from January 2017 to July 2020 is now considered to be average or below average for most of the Goulburn catchment (Figure 2). However, areas near Shepparton received very much below average rainfall during this period.
- The recent rainfall has helped to maintain root zone soil moisture conditions at average or above average during July. The recent rainfall has translated into some runoff and inflow into storages (Figures 3 and 4). Announced allocations for high-reliability water shares are currently 37%, which for this time of year is the highest allocation for the last three years.
- Allocation prices are currently \$210 per ML, which is similar to prices paid over the last month but is significantly lower than the peak of \$700 per ML in January 2020 (Table 1).
- Looking forward to the 2020-21 summer, if storages experience average inflows similar to those received during 2003-04, announced allocations are expected to reach 100% for high-reliability water shares (Northern Victoria Resource Manager).

Recent conditions



<http://www.bom.gov.au>
© Commonwealth of Australia 2020, Bureau of Meteorology

Figure 1: Rainfall totals for the last 30 days (5 July to 3 Aug 2020)



<http://www.bom.gov.au>
© Commonwealth of Australia 2020, Bureau of Meteorology

Figure 2: Rainfall percentiles since January 2017 (Compared to 1900-2019 long-term average) (Jan 2017 to July 2020)

Note: Rainfall percentiles for the period from January 2017 are shown as the Bureau of Meteorology considers January 2017 to be the start of the current dry period for eastern Australia.

How much water is in the storages?

Storage volume: Eildon and Waranga basin storages as at 3 August 2020

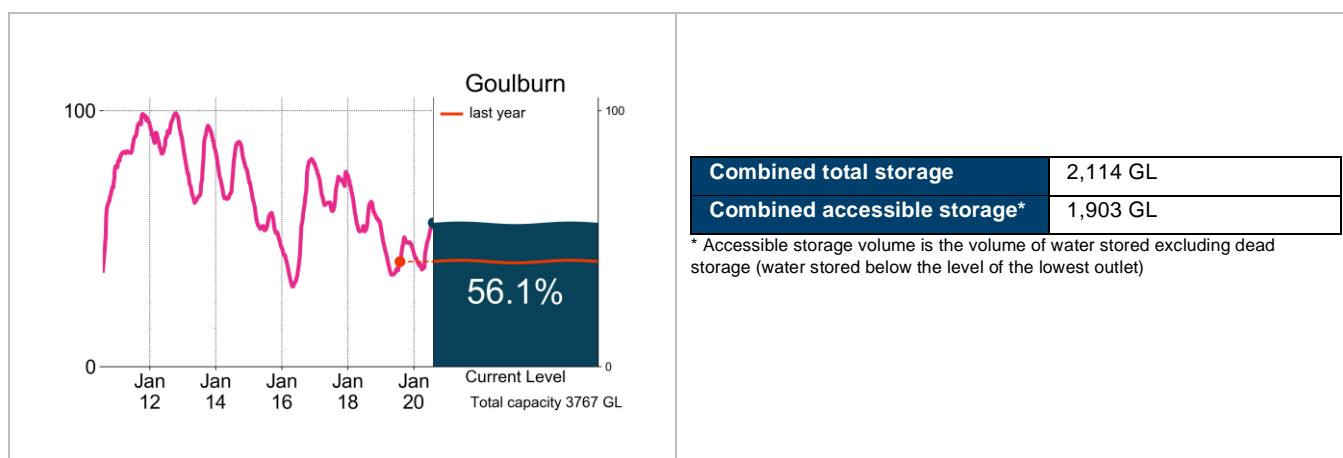


Figure 3: Current total storage (% of total capacity) compared to the last ten years

Source: [BoM water storages dashboard](#)

Who is the water for?

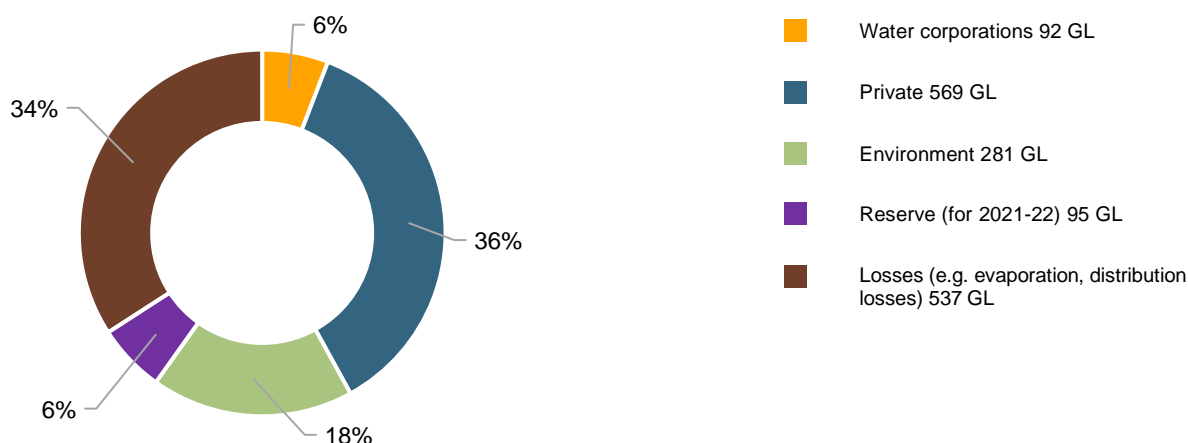


Figure 4: Volumes of water allocations currently available/remaining (% of total remaining) (as at 3 August 2020)

Source: [Northern Victoria Resource Manager](#)

NB: Allocation information shows water available in allocation accounts and remaining commitments at 3 August 2020. Information published by the Northern Victoria Resource Manager differs from information published on the Victorian Water Register as the former includes preliminary environmental water holder use and volumes of operational use by Goulburn-Murray Water private water shareholders.

Table 1: Allocation announcements (%) and market prices – Selected licence categories as at 3 August 2020

| Licence category | Announced allocation | Historic comparison (same time of year) | Entitlement Prices (monthly median) | Allocation Price (median - last 7 days) |
|---|----------------------|--|-------------------------------------|---|
| VIC Goulburn High-Reliability Water Share | 37% | Highest allocation for this time of year since 2017-18 | \$4,200/ML | \$210/ML |
| VIC Goulburn Low-Reliability Water Share | 0% | Same as most years | \$380/ML | |

Source: [Victorian Water Register](#) and [BoM water markets dashboard](#)

FIND OUT MORE

For more information email water@bom.gov.au



With the exception of logos, photography and data referenced as being from other organisations, this publication is licensed under a Creative Commons Attribution 3.0 Australia Licence. The terms and conditions of the licence are available at <http://creativecommons.org/licenses/by/3.0/au>. Attribution for this publication should be: © Commonwealth of Australia (Bureau of Meteorology) 2020.