

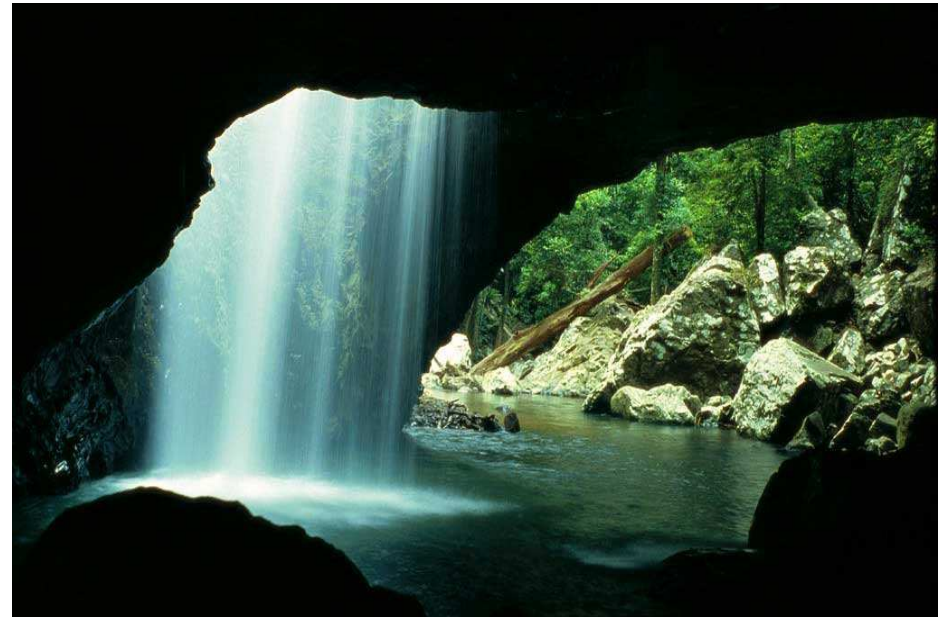
Modernisation and Extension Project



QLD 3.1 – uniDap WaterQ

*What We Do Not Measure
We Cannot Manage*

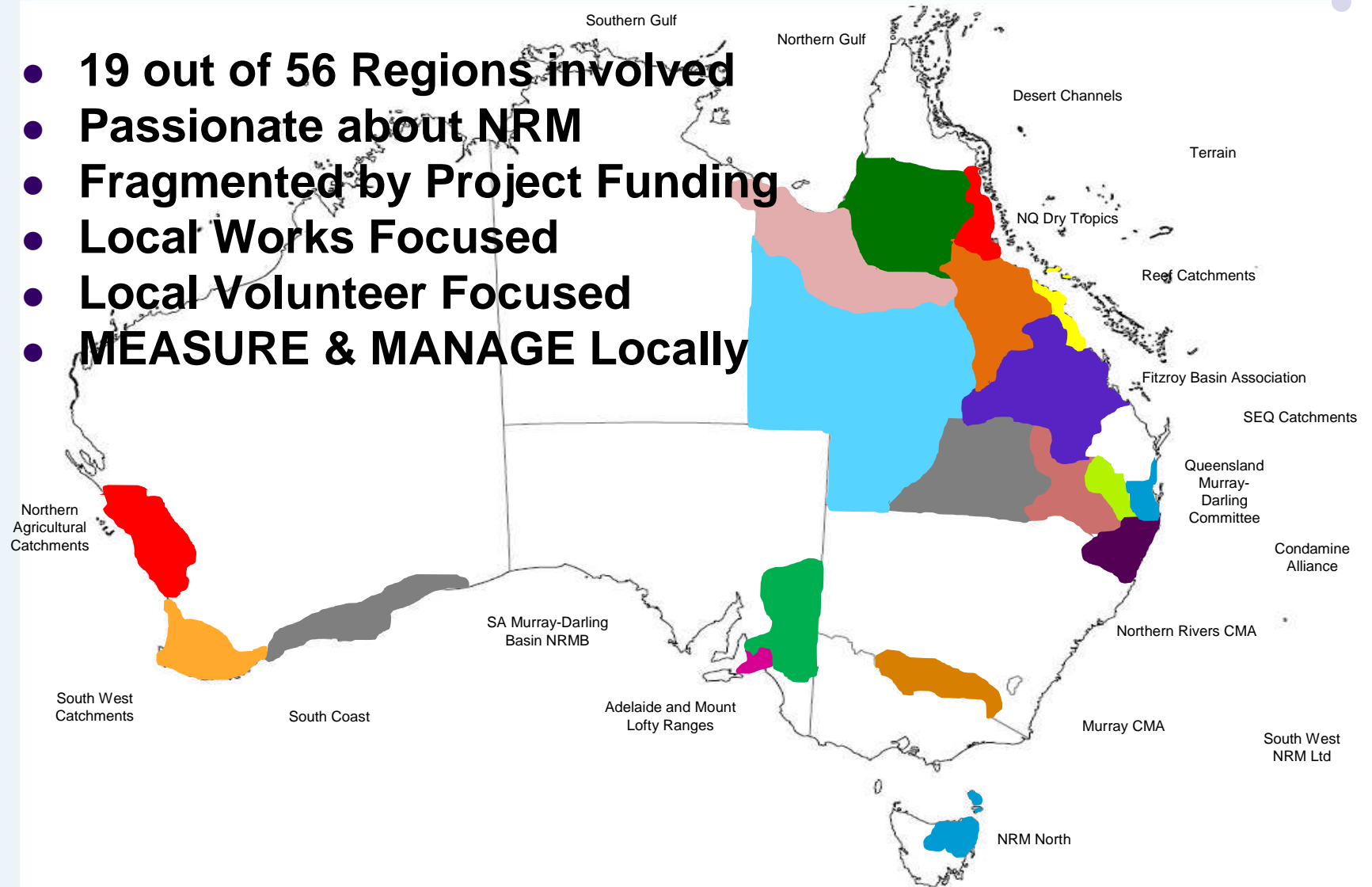
Gavin Sigley
CEO uniDap
Solutions



QLD 3.1 – Partners



- **19 out of 56 Regions involved**
- **Passionate about NRM**
- **Fragmented by Project Funding**
- **Local Works Focused**
- **Local Volunteer Focused**
- **MEASURE & MANAGE Locally**





Motivation of Volunteers



Courier Mail 19th March 2010

Probe into lake kills proves costly

MORETON Bay Regional Council is spending more than \$3400 a week trying to solve the riddle of fish deaths in a man-made lake.

So far, the bill for Beachmere Lake near Brive Island has reached \$102,000. The cost covers investigating two major fish kills and pumping oxygen into its

waters. Yesterday, council committed another \$40,340 to the probe, with speculation a possible solution could cost about \$200,000 more.

Problems with the lake surfaced on November 24 last year, when thousands of fish were found dead in the water.

The Department of

Environment and Resource Management said the fish died from a lack of dissolved oxygen in the water, but residents maintain toxins in the area are to blame.

An interim report on the lake provided by independent consultants identified an algal bloom as the cause of that kill.



QLD 3.1 – uniDap WaterQ Software

- Began in 2005 to solve known problems of:
 - Data Security.
 - Data Fragmentation.
 - Volunteer Management.
 - Real Time Reporting of Results to Volunteers.
 - Linking Calibrations Results to Observations.
- All Resolved by 2008



QLD 3.1 – uniDap WaterQ Software

- Modernisation and Extension Project:
 - Pressed the Accelerator – More Partners
 - WDTF Transfer Engine Successfully Built
 - Intelligent Data Import Mechanism Built
 - Further QA/QC Incorporated into Software
 - Geospatial Meta Data Improvements
 - Google Map Integration
 - Google Map Site Location



Google Map Site Location

numinbah valley - Google Maps - Windows Internet Explorer

http://maps.google.com.au/maps?hl=en&tab=wl

File Edit View Favorites Tools Help

http://seq.unidapwate... numinbah valley - G...

Web Images Videos Maps News Books Gmail more

Google maps Australia Find businesses, add...

Get Directions My Maps

numinbah valley

Sponsored Links

Numinbah Info
Numinbah Visitor information
Popular Dining, Events & Even More
www.VisitNSW.com

numinbah valley adventure trails
more info »
2524 nerang - murwillumbah road numinbah
nerang QLD 4211 - (07) 5533 4137
2 reviews
"We had a lovely trek the scenery is just g
even saw a wallaby ..."

Valley View Cafe - more info »
2157 Nerang Murwillumbah Rd, Numinbah
4211 - (07) 5533 4191



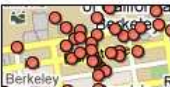

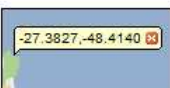
Ironbark Belted Galloway Stud - m...
155 Staffords Rd, NUMINBAH VALLEY, QU...
4211 - (07) 5527 5599

Business listings provided by [Yellow Pages](#)

See all 102 results for [numinbah valley](#)

Can't find what you're looking for?
• [Add a place to the map](#)

Google Maps Labs

	Geography Test your knowledge of world geography! Guess the name of the country from satellite imagery and try to beat your top score!	<input checked="" type="radio"/> Disable
	Rotatable Maps Cornelius Q Tired of North always being up? Add rotatable map types and give East, West and South a fair go.	<input type="radio"/> Enable <input checked="" type="radio"/> Disable
	What's Around Here? Michael A Adds a button that displays the most popular places in the current map view. A great way to browse the map.	<input type="radio"/> Enable <input checked="" type="radio"/> Disable
	LatLng Tool Tip Marcelo C Displays a tool tip next to the mouse cursor, showing the latlng directly underneath it.	<input type="radio"/> Enable <input checked="" type="radio"/> Disable
	LatLng Marker Marcelo C Adds an option to the context menu that lets you drop a mini-marker showing the latlng of the position at which the cursor	<input checked="" type="radio"/> Enable <input type="radio"/> Disable

Important: To save your enabled Labs for next time, you must [sign in to your Google account](#).

Map Satellite Terrain

©2010 Google - Map data ©2010 MapData Sciences Pty Ltd, PSMA - [Terms of Use](#)



Google Map Site Location

numinhah valley - Google Maps - Windows Internet Explorer

http://maps.google.com.au/maps?hl=en&tab=wl

File Edit View Favorites Tools Help

http://seq.unidapwate... numinhah valley - G... x

Web Images Videos Maps News Books Gmail more

Google maps Australia numinhah valley Search Maps Show search options

Find businesses, addresses and places of interest.

Print Send Link

Traffic More... Map Satellite Terrain

-28.205793, 153.229178

-28.206323, 153.227911

50 m 200 ft

©2010 Google - Imagery ©2010 DigitalGlobe, GeoEye, Map data ©2010 MapData Sciences Pty Ltd, PSMA - Terms of Use



uniDap WaterQ - Site

Organisations that Take Samples at This Site

Organisation	Field Sample Type	Method/Guideline	Licence Code	BoM Reportable
Numinhah Landcare Group	Ambient WaterQ Sample		Attribution (BY)	Yes

Site Details

GPS	UBD Ref	Site Code	Old Site Code	Latitude	Longitude	Datum
	Off the map	GCCVE001		-28.21207	153.23447	

Local Government Area

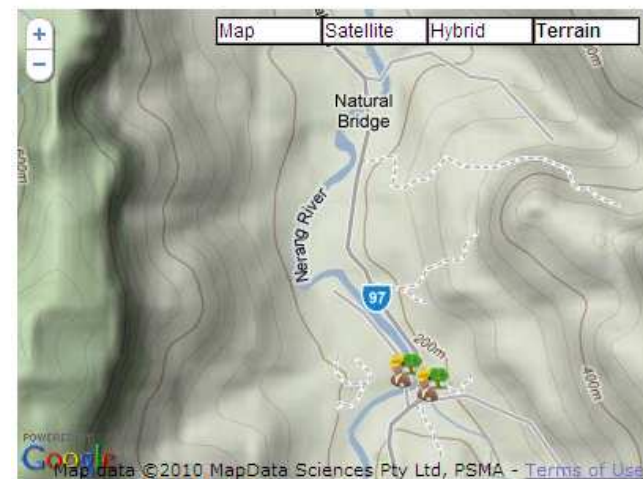
Local Government



NOAA, U.S. Navy, NGA, GEBCO, DigitalGlobe, GeoEye - Terms of Use

Last Selected Marker:

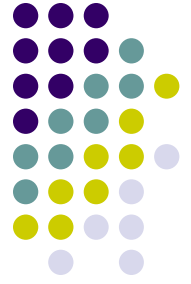
Nerang River Numinhah Cave Creek site 2



Map data ©2010 MapData Sciences Pty Ltd, PSMA - Terms of Use

Last Selected Marker:

The Real Success Is Not Software!



- **Volunteers and Regional Goals**
 - Maintaining and Improving River and Environment Health
 - Making a Difference Locally.
 - Ready and Willing Measurement Takers.
- **National Ambition**
 - National Water Management Plans
 - National Reporting & Coordinated Good Decisions
- **Align Local Goals With National Ambition**
 - Support the Measurement takers
 - Continue to Improve the Meta Data and Standards
 - Offer Geospatial support.



Problems and Challenges

- Project Announcement Delay
 - User Conference and Training Delayed by 6 weeks
 - Critical Items Ran into “Christmas” = More Delays
 - Rushed Software Development
- Reduced Funding - Continuity of Supply
 - Partners Struggling to Resource Adequately
 - Still a wait and see approach with some.
- Logistics around coordinating 19 regions
 - At times we refer to it as the “cat muster”

The background of the slide is a photograph of a landscape at sunset. The sky is a mix of orange, red, and yellow, with some clouds. In the foreground, there are dark green trees, and in the background, there are hazy mountains. The sun is visible as a small orange circle on the horizon.

Our Country

Adapted from Dorothea Mackellar's "My Country"

I love a sunburnt country, A land of sweeping plains,
Of ragged mountain ranges, Of droughts and flooding rains.

I love her far horizons, I love her jewel-sea,
Her beauty and her terror - The wide brown land for me!

But more there is to country, Than weather and terrain,
To me it is the people, That make this country great,
And so it was O'Reilly's , Was a boost for mind and soul,
Linking grassroots with our Government, With Streamcare as
the goal.

BOM and DERM supporting all, uniDAP and SEQ,
Initiating networks, For the likes of me and you,
The challenge now to champion, What we all agreed is grand,
To continue to make a difference, In this great sunburnt land.

*Paul Webb - Regional Coordinator, Water and Wetlands
Queensland Murray Darling Committee Inc.*