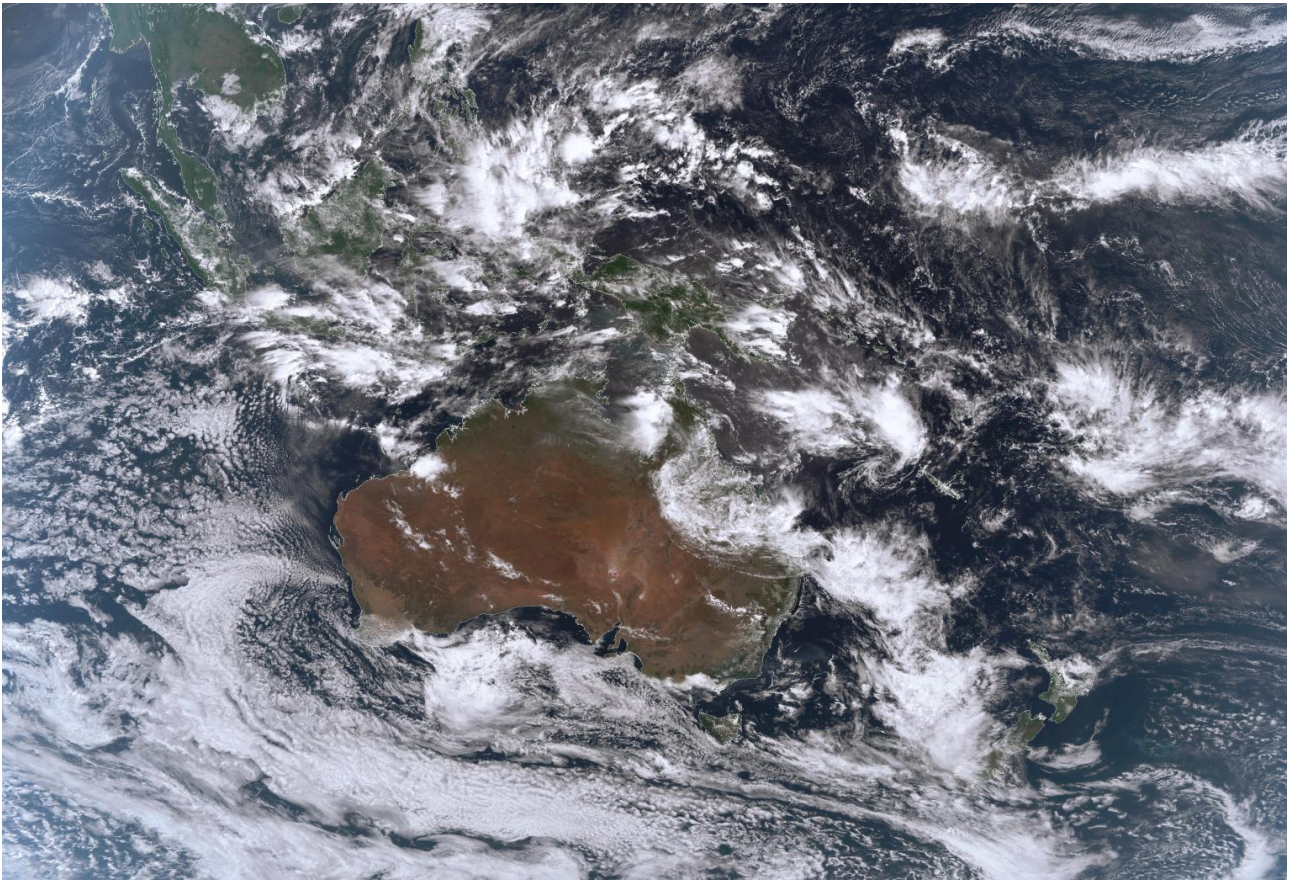


Satellite Images (JPG format)

User Guide - Version 1.2 – updated 12 January 2026



This [user guide](#) provides a summary of the satellite images in JPG format available via Anonymous FTP and to Registered Users via FTP and cloud (S)FTP, sourced from the Advanced Himawari Imager on the Himawari-9 satellite operated by the Japan Meteorological Agency (JMA).

Contents

Products	3
File Location	3
File Naming Convention	4
Data Availability Time	4
Channel Information	4
Additional Information	4
Contact Us	4
Appendix A: Examples of Satellite Images (JPG format).....	5
IDE00401 – Infrared (Ch13) greyscale:	5
IDE00402 – Visible (Ch3) greyscale:	6
IDE00403 – Infrared (Ch13) Zehr false-colour enhancement:	6
IDE00404 – Infrared (Ch13) ‘rainbow’ enhancement	7
IDE00405 – Infrared (Ch13)/Blue Marble composite	7
IDE00406 – True colour/IR (Ch13) composite	8
IDE00407 – Water vapour (Ch8) with false-colour enhancement.....	8
IDE00409 – Visible (Ch3) greyscale	9
IDE00411 – Infrared (Ch13) greyscale	10
IDE00412 – Visible (Ch3) greyscale	11
IDE00416 – True colour/IR (Ch13) composite	12

Products

Table 1 provides a list of products included in the Satellite Images (JPG format) Bundle (IDBEA006). Please see our [Product Catalogue](#) for current prices.

Product Code	Product Description	Projection	Domain	Resolution
IDE00401	Infrared (Ch13) greyscale	Equirectangular	Australia	2km
IDE00402	Visible (Ch3) greyscale	Equirectangular	Australia	2km
IDE00403	Infrared (Ch13) Zehr false-colour enhancement	Equirectangular	Australia	2km
IDE00404	Infrared (Ch13) 'rainbow' enhancement	Equirectangular	Australia	2km
IDE00405	Infrared (Ch13)/Blue Marble composite	Equirectangular	Australia	2km
IDE00406	True colour/IR (Ch13) composite	Equirectangular	Australia	2km
IDE00407	Water vapour (Ch8) with false-colour enhancement	Equirectangular	Australia	2km
IDE00409	Visible (Ch3) greyscale	Equirectangular	Australia	0.5km
IDE00411	Infrared (Ch13) greyscale	Geostationary	Full disk	2km
IDE00412	Visible (Ch3) greyscale	Geostationary	Full disk	4km
IDE00416	True colour/IR (Ch13) composite	Geostationary	Full disk	4km

Table 1 List of satellite image products included in the Satellite Images (JPG format) Bundle (IDBEA006)

The Australian domain is 55°S to 20°N and 85°E to 165°W.

File Location

Files are available in the /gms subdirectory of Registered Users' directories.

These products are available via cloud FTP (<ftp-reg.cloud.bom.gov.au>), SFTP (<sftp-reg.cloud.bom.gov.au>) and <ftp.bom.gov.au>.

Files are also available via anonymous FTP at: <ftp://ftp.bom.gov.au/anon/gen/gms/>. Please note that use of data from anonymous FTP should be in accordance with the [copyright notice](#) and [disclaimer](#).

File Naming Convention

Product files conform to the following naming convention:

IDE004xx.yyyymmddhhmm.jpg

<u>File-name key</u>	
IDE004xx	Product Code as listed in Table 1
yyymmddhhmm	image validity time in UTC

Data Availability Time

Full disk scans are made by the satellite every 10 minutes, with the exception of daily maintenance carried out at 12:40 pm AEST (0240 UTC) and 12:40 am AEST (1440 UTC). Within each 10-minute period, there are multiple observations of Japan (4 x 2 sectors), multiple targeted observations (severe weather), and ~40 observations of landmarks to assist with navigation/registration. The [Himawari-9 imager schedule](#) is posted on the JMA's website.

All Registered User FTP customers have a products_list.txt file in their home directory, which is updated daily at approximately 10:05 am AEST (0005 UTC). This lists all individual products assigned to the Registered User FTP account. Each product code has a delete time in hours from FTP. The delete time of the satellite image products listed in Table 1 is 24 hours.

Channel Information

Himawari-9 has 16 channels in the range 0.4 - 13.3 μm with three spatial resolutions: one channel has 500 m resolution, three channels have 1000 m resolution, and 12 channels have 2000 m resolution.

JMA have made the [SRF data](#) and a report on [AHI8 performance](#) available.

Note that the "Dynamic Range" column within the performance report should be read as the saturation value (above which the detector is insensitive).

Additional Information

More information on satellites is available on the [Bureau's web site](#) and on the website for the [Meteorological Satellite Center of JMA](#).

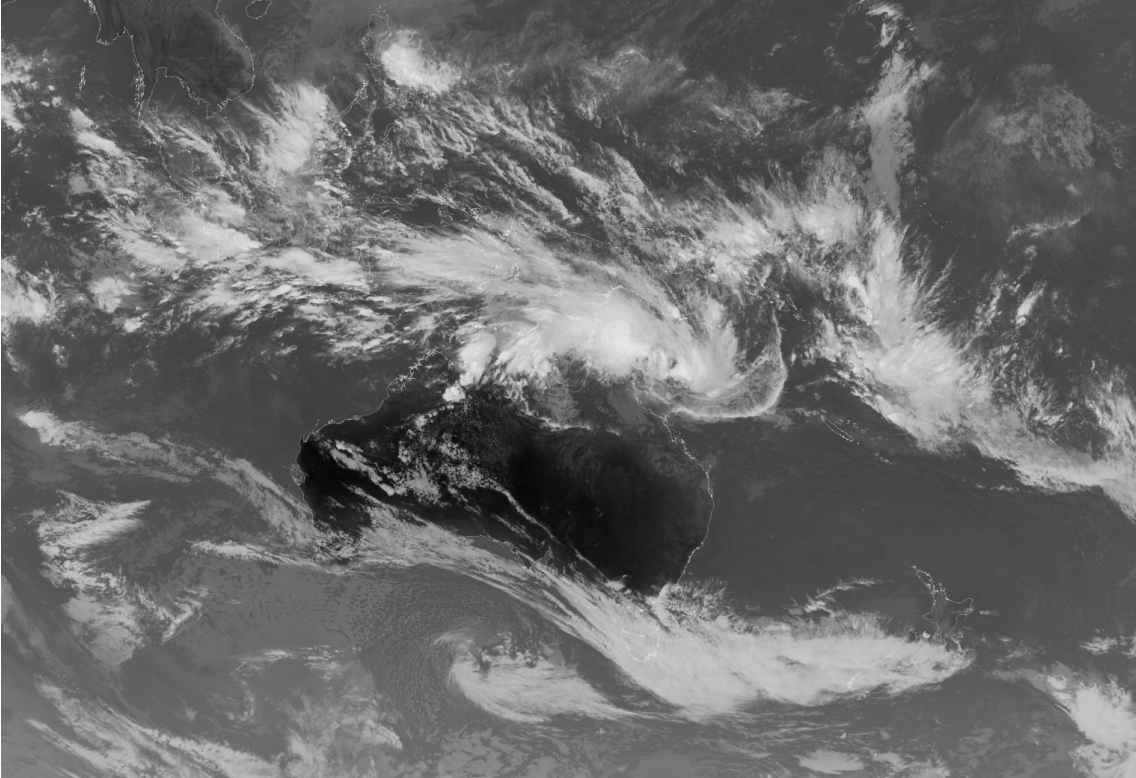
Contact Us

For enquiries about real-time data please email webreg@bom.gov.au

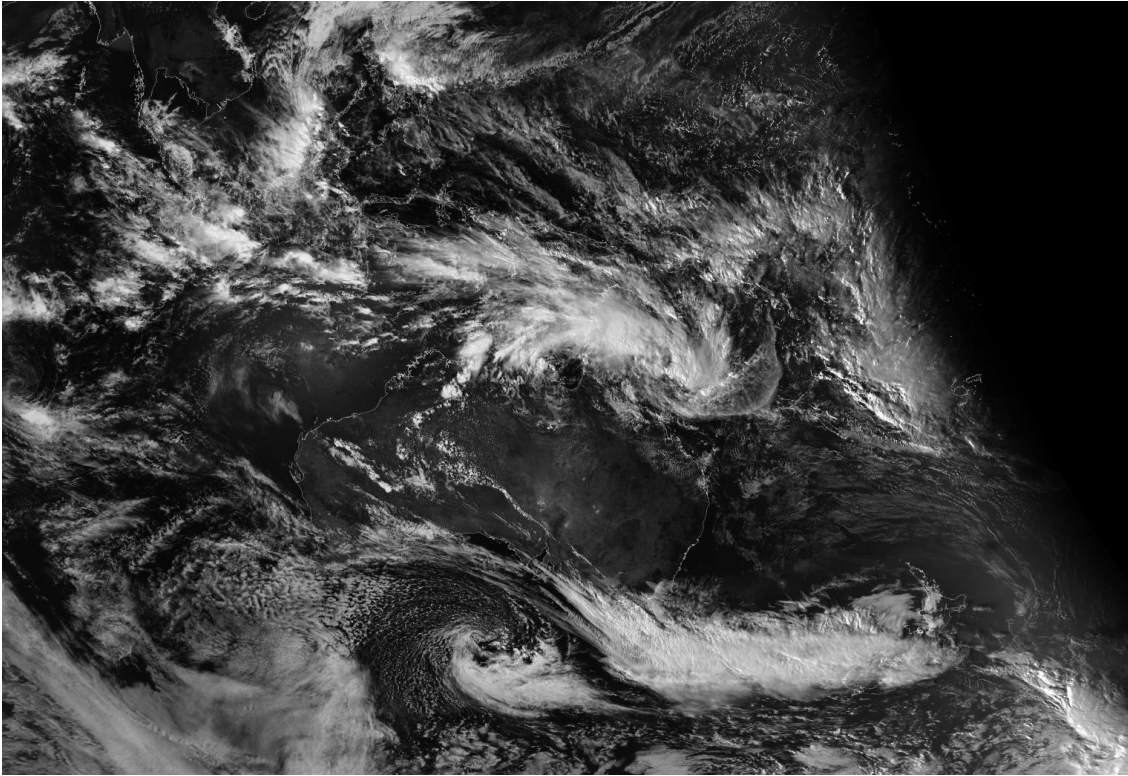
Appendix A: Examples of Satellite Images (JPG format)

Appendix A provides examples of each of the satellite image (JPG format) products listed in Table 1. These images all have a validity time of 202601090630.

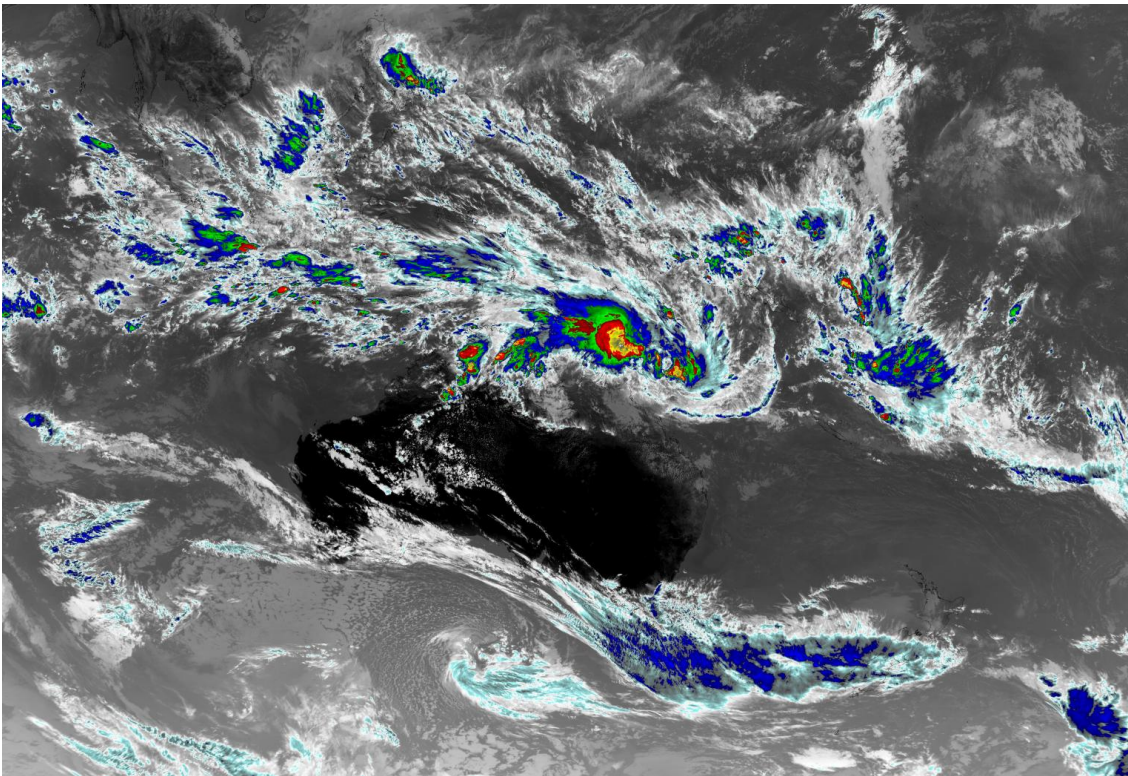
IDE00401 – Infrared (Ch13) greyscale:



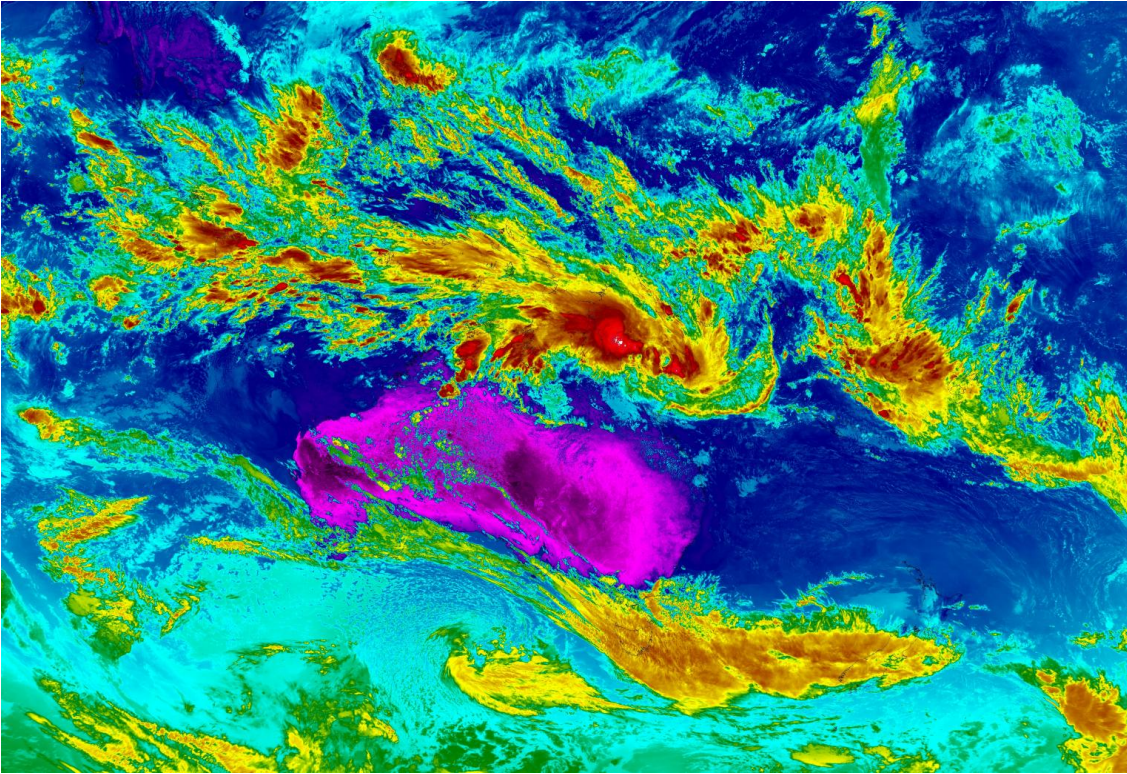
IDE00402 – Visible (Ch3) greyscale:



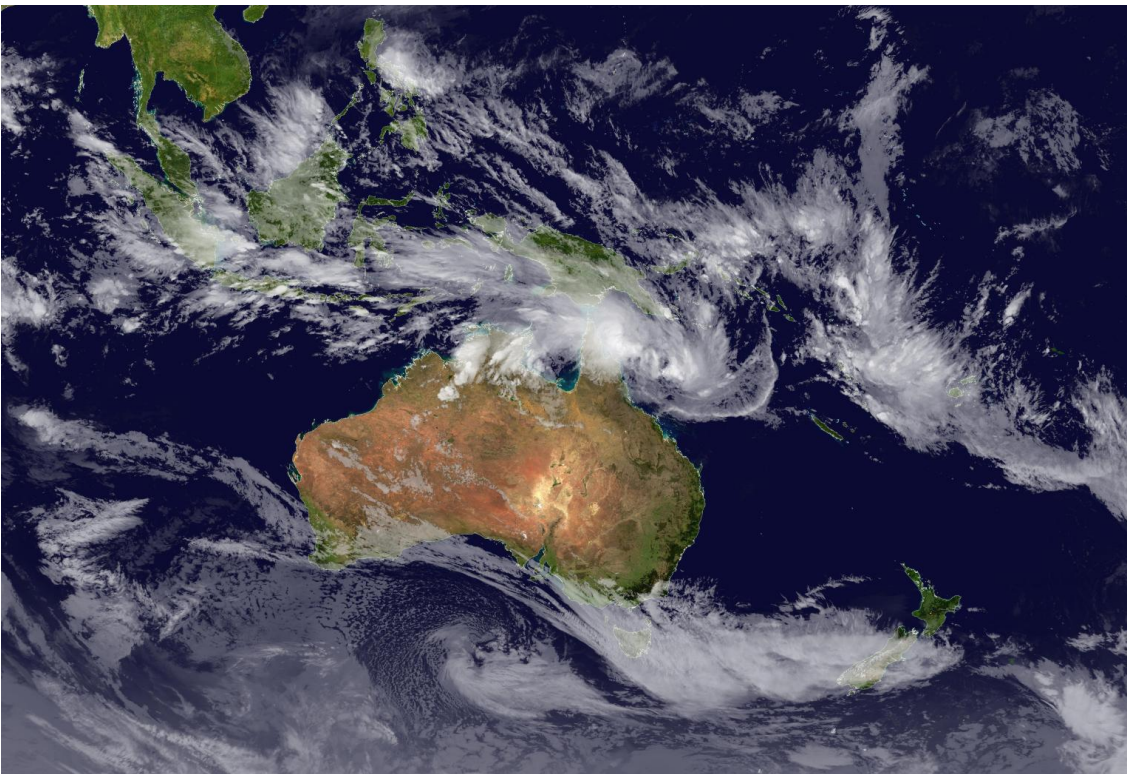
IDE00403 – Infrared (Ch13) Zehr false-colour enhancement:



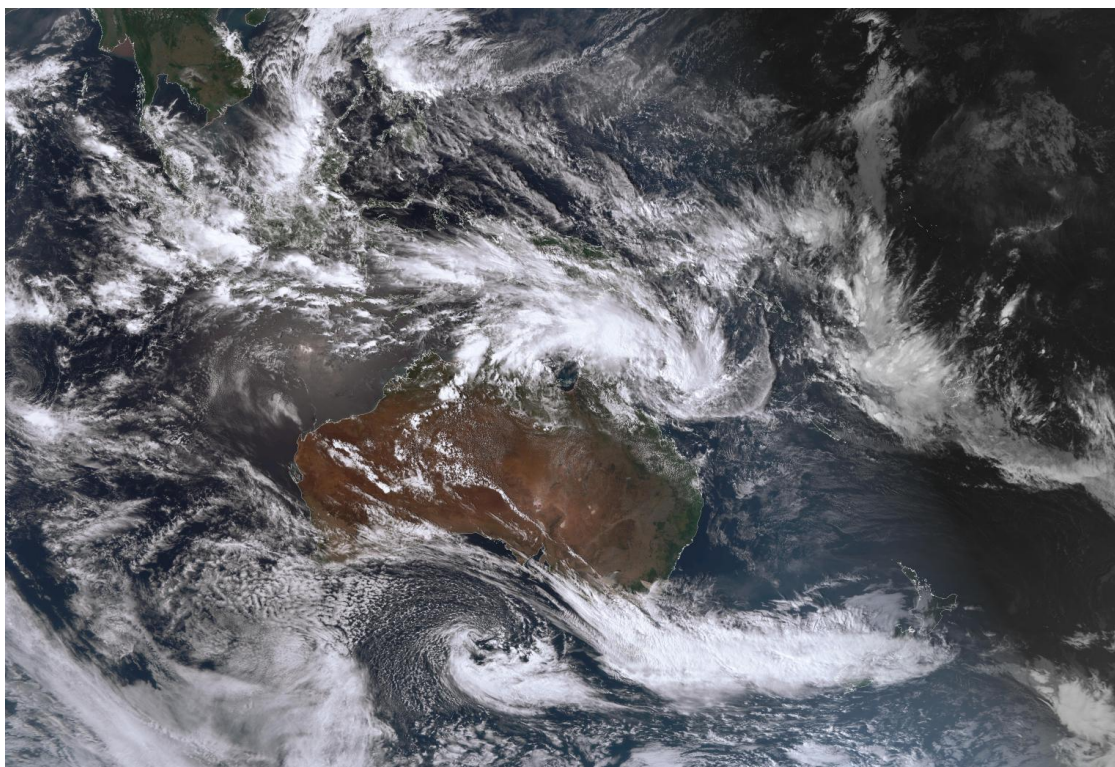
IDE00404 – Infrared (Ch13) ‘rainbow’ enhancement



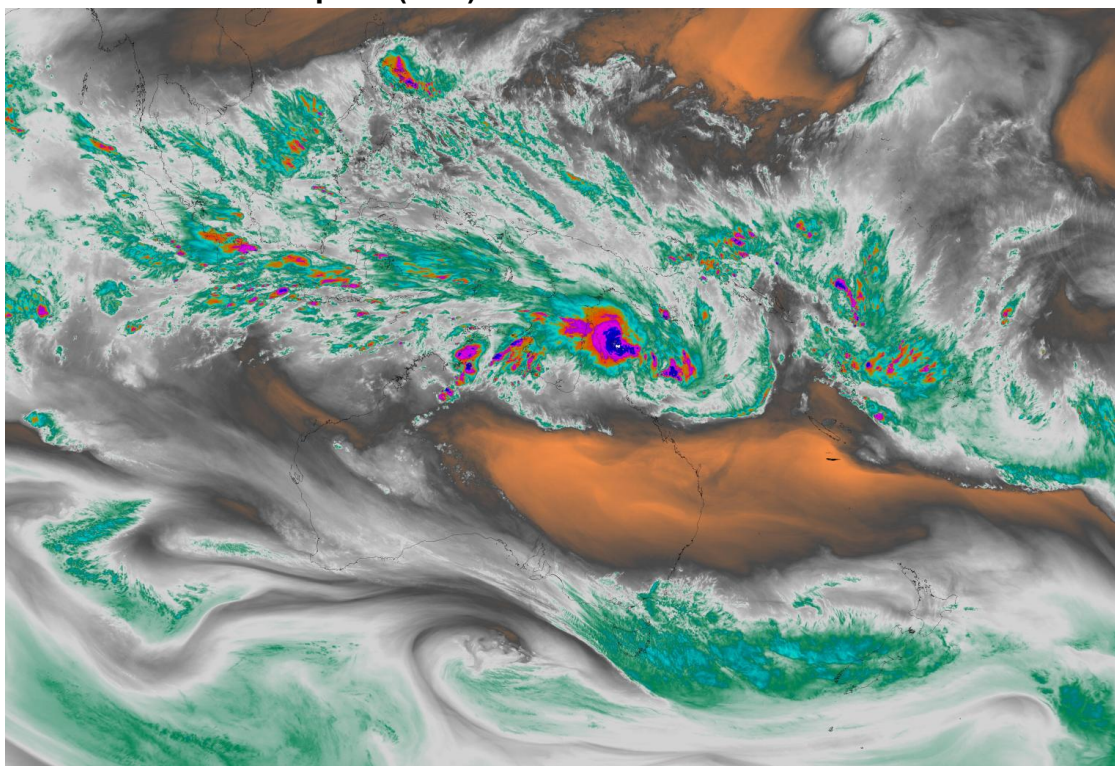
IDE00405 – Infrared (Ch13)/Blue Marble composite



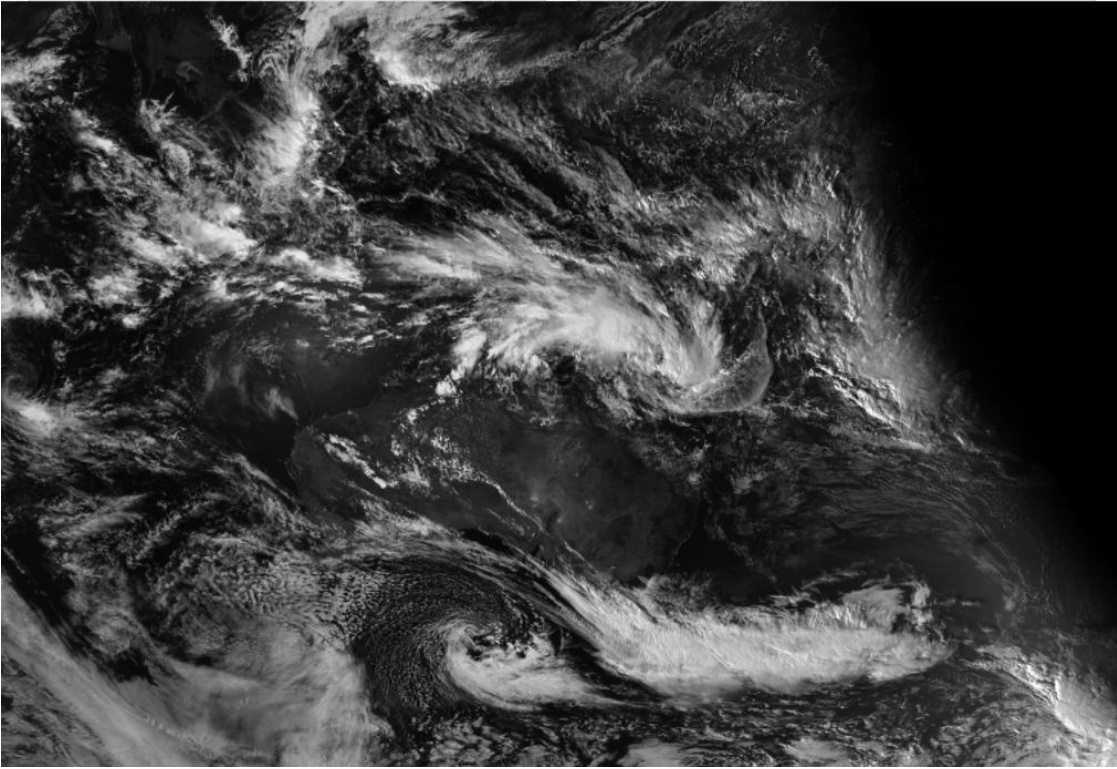
IDE00406 – True colour/IR (Ch13) composite



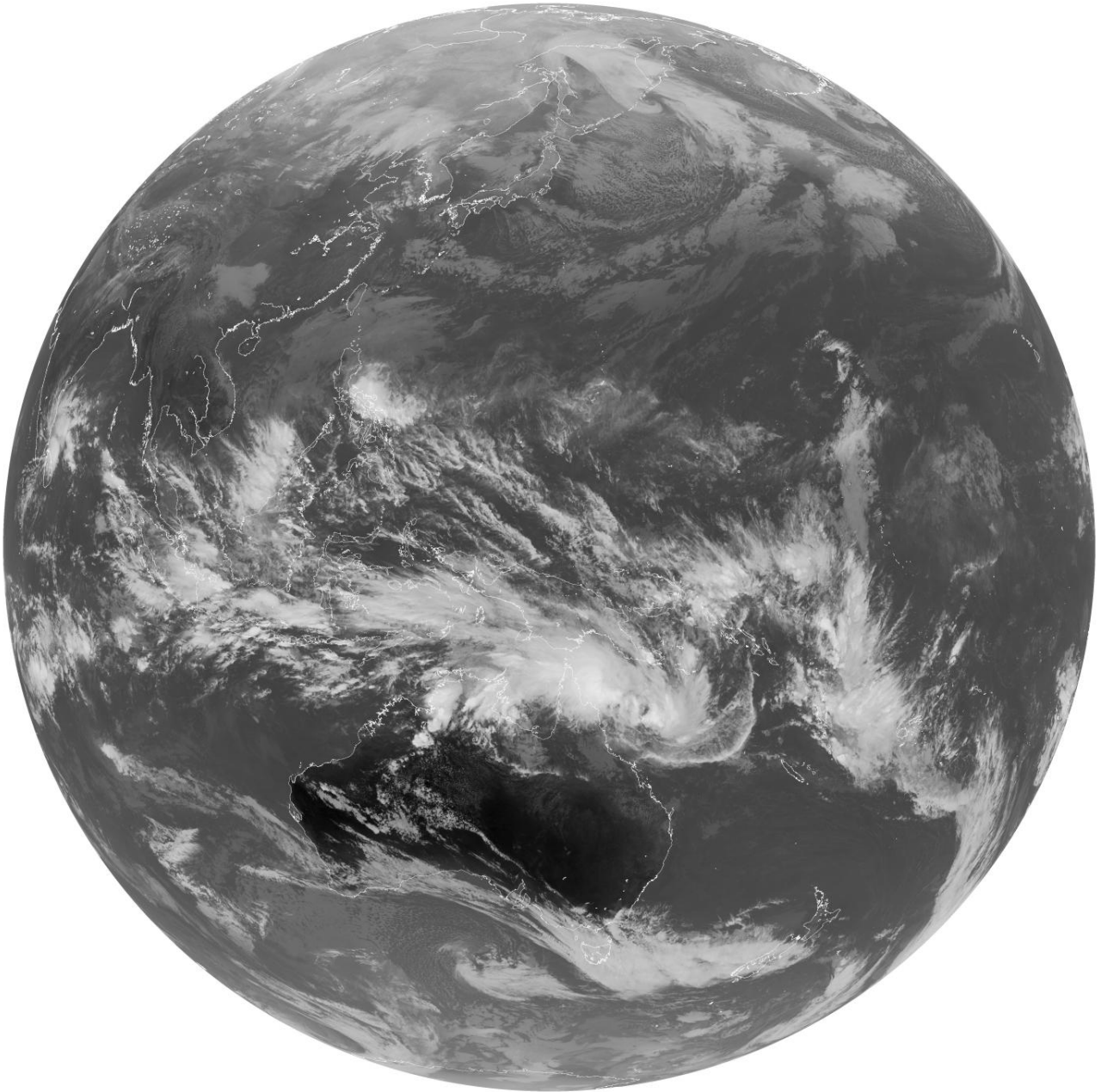
IDE00407 – Water vapour (Ch8) with false-colour enhancement



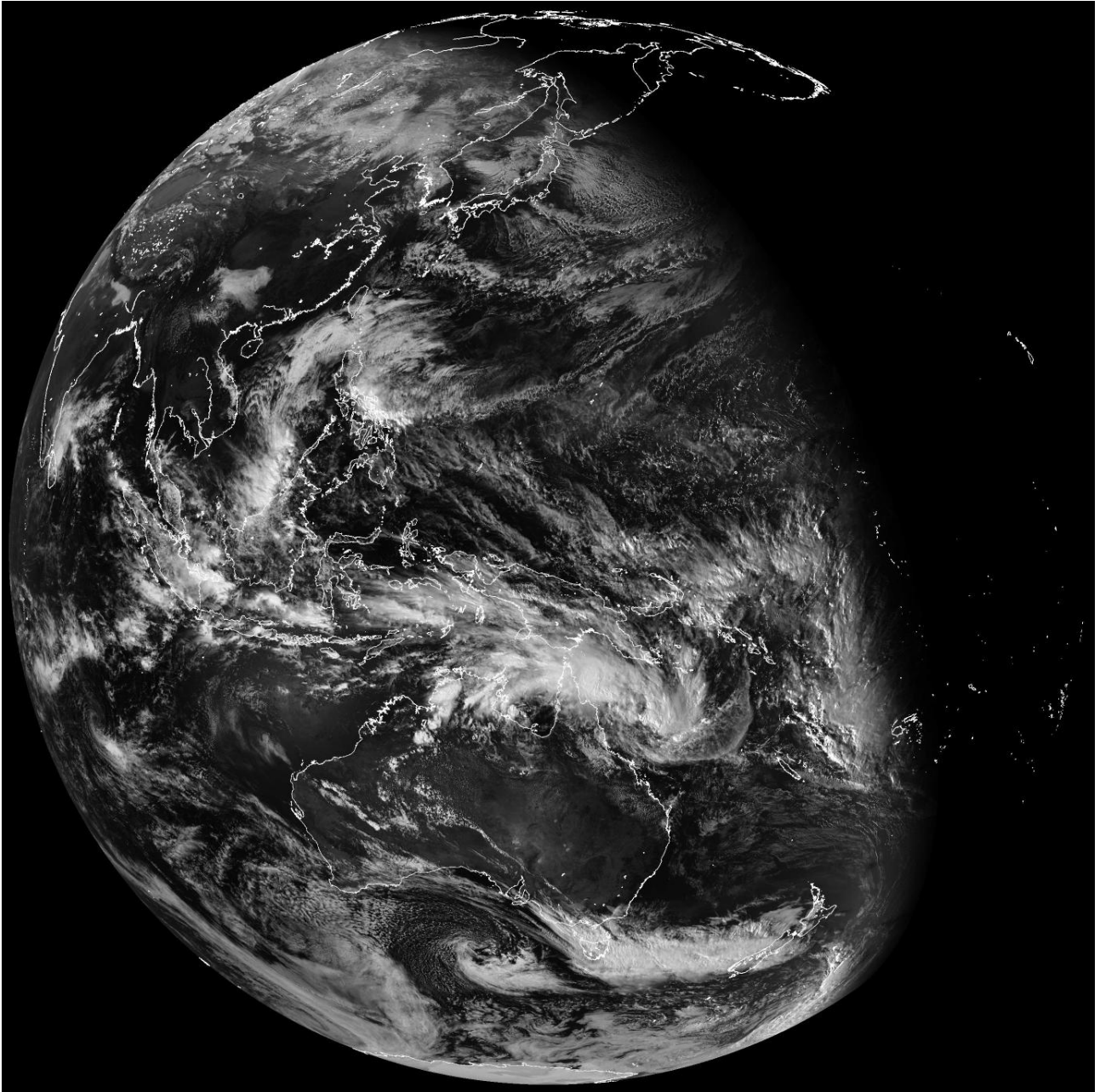
IDE00409 – Visible (Ch3) greyscale



IDE00411 – Infrared (Ch13) greyscale



IDE00412 – Visible (Ch3) greyscale



IDE00416 – True colour/IR (Ch13) composite

