

THE AUSTRALIAN BASELINE SEA LEVEL MONITORING PROJECT

MONTHLY DATA REPORT

AUGUST 2003



This report was prepared under the Australian Greenhouse Science Program for the Australian Greenhouse Office, supported by NTF Australia at the Flinders University of South Australia.



**National Tidal Facility Australia
Flinders University
Adelaide • Australia**

GPO Box 2100
Adelaide SA 5001
Australia

Tel: (+618) 8201 7532
Fax: (+618) 8201 7523
Email: ntf@flinders.edu.au
Website: <http://www.ntf.flinders.edu.au>

Quality Certification:

I authorise the issue of this Australian Baseline Sea Level Monitoring Project Monthly Data Report for August 2003 in accordance with National Tidal Facility Australia Quality Assurance procedures.

William Mitchell
A/Director - National Tidal Facility Australia

The Australian Baseline Sea Level Monitoring Project

Monthly Data Report

AUGUST 2003

NOTES ON THE DATA FOR AUGUST 2003

Sea level data return in August was excellent for all stations.

The residuals (Figures 2 and 3), or difference between the observations and the tidal predictions, are the non-tidal components of the sea level observations. The residuals are primarily the consequence of short-term meteorological effects (Figures 5 and 9).

Wind speed and wind gust data from Stony Point and Cocos Islands was erroneous (intermittently at Stony Point) throughout August. These erroneous values and the corresponding incident wind directions have been removed (Figures 4, 5 and 6). At Groote Eylandt the air and water temperature and wind direction sensors (all on the same circuit) continued to record erroneous values (Figures 7 and 8). The data for these three sensors have been removed from the record (hence no incident wind data also).

The sea level anomalies (Figure 10) continued to be negative at most sites in August but changed from positive to negative at Cocos Islands and negative to positive at Rosslyn Bay.

The barometric pressure anomalies continued to be positive at Cocos Islands and also remained negative at Broome and Groote Eylandt. The barometric pressure anomalies changed from positive to negative at the other sites in August.

With regard to the water and air temperature anomalies in Figures 12 and 13 respectively, it must be noted that there are large gaps in the data for several stations, where the data collected appeared to be erroneous. It is difficult to relate the water and air temperature anomalies directly to those of barometric pressure and sea level without considering other effects, such as localised currents, wind speeds and directions. The anomalies are primarily used to quality control the water and air temperature data.

Figure 14 compares the mean, maximum and minimum values for air temperature, water temperature and barometric pressure for the current month with the long-term August values. Note that the long-term ranges are calculated using the historical sets of August data for each station *excluding* the current month of data.

For all stations the mean air temperatures in August 2003 were consistent with the long term August means. The minimum air temperature at Port Stanvac (6.1°C), Broome (14.9°C) and Cape Ferguson (13.2°C) was lower than the previously recorded minima.

The mean water temperature recorded at all sites in August 2003 was consistent with the long-term August means.

The mean Barometric Pressure at most sites were generally lower than the long-term August means with Hillarys (992.7hPa), Esperance (991.9hPa), Burnie (977.0hPa) and Spring Bay (974.9hPa) recording record minima Barometric Pressures.

Figure 16 shows the monthly mean sea levels with respect to an arbitrary fixed offset from the zero of the tide gauge. This plot clearly shows significant correlation in seasonal signals between stations, in contrast to the sea level anomalies plot (Figure 10), which has the seasonal signal removed from the data.

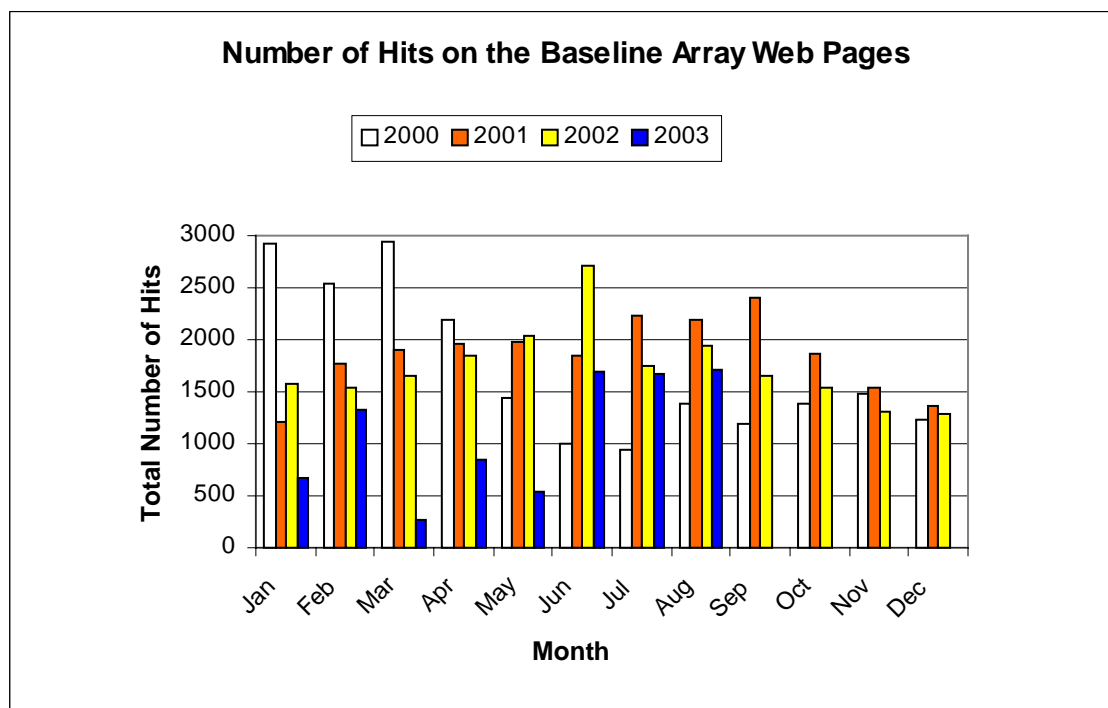
Figure 17 shows the short-term sea level trends for each SEAFRAME location included in the Australian Baseline Sea Level Monitoring Project. Table 1 lists the commencement of operation, the sea level trend for the entire record (plotted in Figure 17) and the change in trend with respect to the analysis of the previous month.

Table 1: Tide gauge installation dates, short-term sea level trends and change in trend from the previous month for the Australian Baseline array to August 2003.

Location	Installation Date	Sea Level Trend (mm/yr)	Change from previous month
Cocos Islands	Sep 1992	+13.1	-0.2
Groote Eylandt	Sep 1993	+15.7	-0.3
Darwin	May 1990	+12.0	-0.2
Broome	Nov 1991	+15.4	-0.3
Hillarys	Nov 1991	+12.0	-0.3
Esperance	Mar 1992	+8.8	-0.3
Thevenard	Mar 1992	+6.9	-0.2
Port Stanvac	Jun 1992	+7.4	-0.1
Portland	Jul 1991	+3.5	-0.1
Lorne	Jan 1993	+2.6	-0.1
Stony Point	Jan 1993	+2.1	-0.1
Burnie	Sep 1992	+4.2	-0.1
Spring Bay	May 1991	+3.8	0.0
Port Kembla	Jul 1991	+5.6	0.0
Rosslyn Bay	Jun 1992	+4.8	0.0
Cape Ferguson	Sep 1991	+6.0	-0.1

The number of hits to the Australian Baseline Sea Level Monitoring project web pages from 2000 to August 2003 is given in Table 2.

Table 2: Number of hits on the Australian Baseline Sea Level Monitoring Project web pages from 2000 to 2003.



Please note: Tide gauges at Stony Point and Lorne do not record air temperature, water temperature and barometric pressure data and are not present in Figures 3,7,8,9,11,12,13 and 16. The tide gauge at Lorne does not record wind data and is not present in Figures 4, 5 and 6.

The *Monthly Data Report* is prepared by NTF Australia for Environment Australia. Staff members produce the text, plots and tables.

Further information on the *Monthly Data Report* and other projects conducted by NTF Australia can be obtained from the following address.

Contact address:

NTF Australia
The Flinders University of South Australia
GPO BOX 2100, Adelaide SA 5001
Tel: [+61 8] 8201 7532
Fax: [+61 8] 8201 7523
Email: <http://www.ntf.flinders.edu.au/TEXT/STAFF/contact.html>
Website: <http://www.ntf.flinders.edu.au/>

Please note the following:

While all care has been taken in the collection, analysis and compilation of the data, it is supplied on the condition that neither the *Commonwealth of Australia* nor *NTF Australia* shall be liable for any loss or injury whatsoever arising from the use of the data. The Commonwealth of Australia holds copyright for material contained in this document.

Individuals and organisations are advised that quality controlled six-minute or hourly data from these stations are available on request from NTF Australia. Some handling fees may be charged. For commercial agencies requesting data, some additional costs may be levied.

Figure 1

**AUGUST 2003
SIX MINUTE SEA LEVEL OBSERVATIONS (m)**

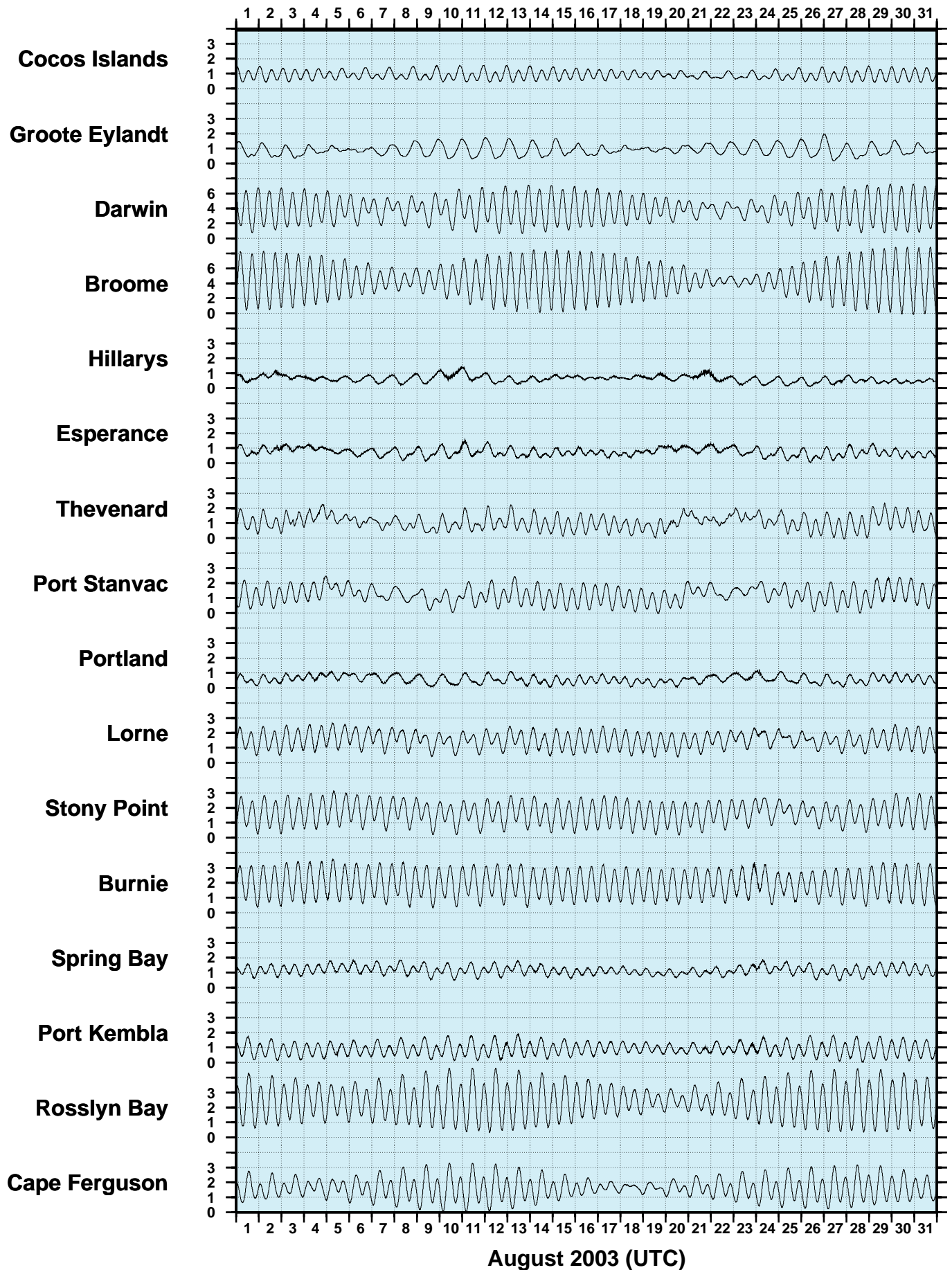


Figure 2
AUGUST 2003
SIX MINUTE RESIDUAL WATER LEVELS (m)

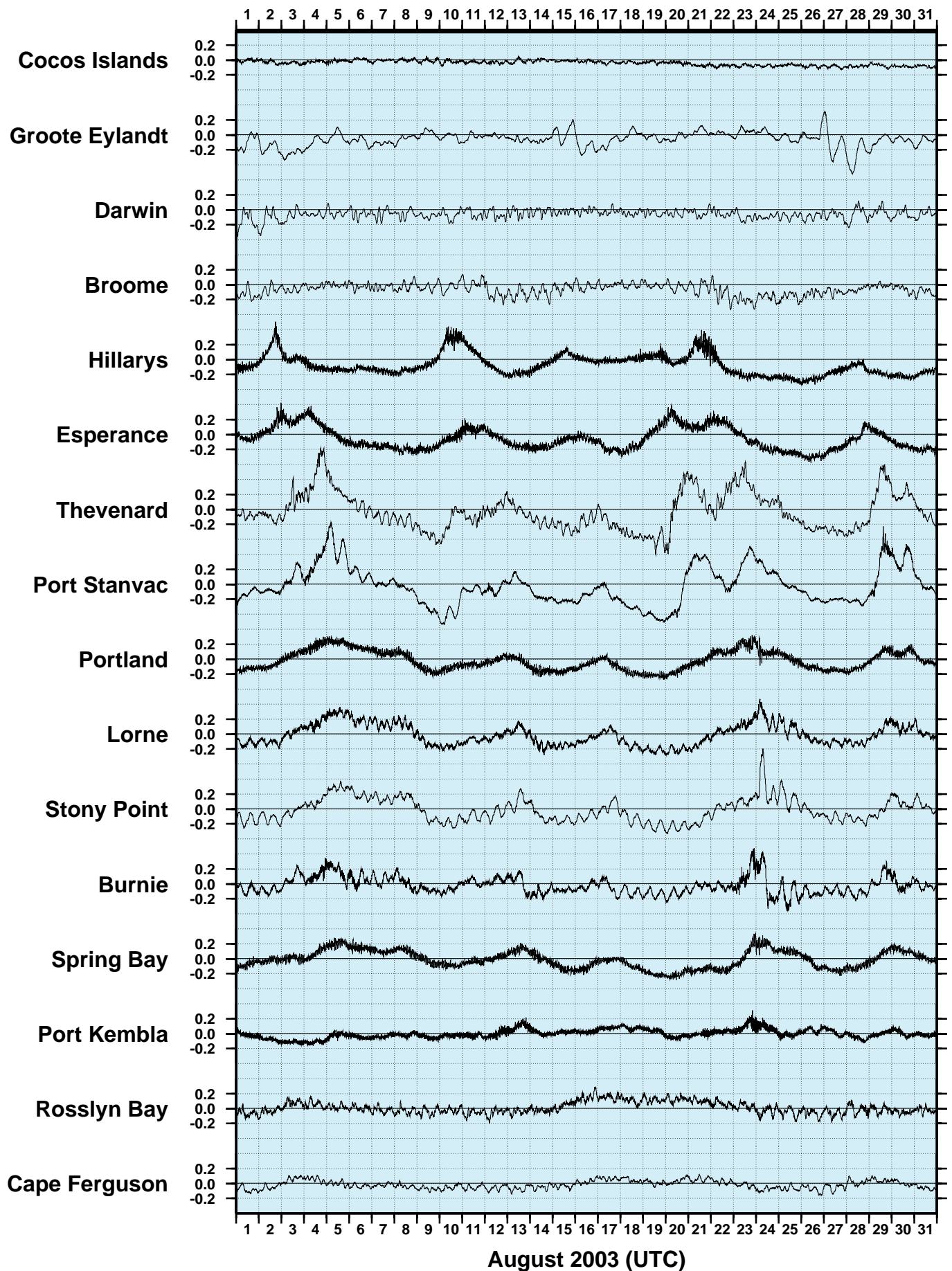


Figure 3
AUGUST 2003
SIX MINUTE RESIDUALS
ADJUSTED FOR ATMOSPHERIC PRESSURE (m)

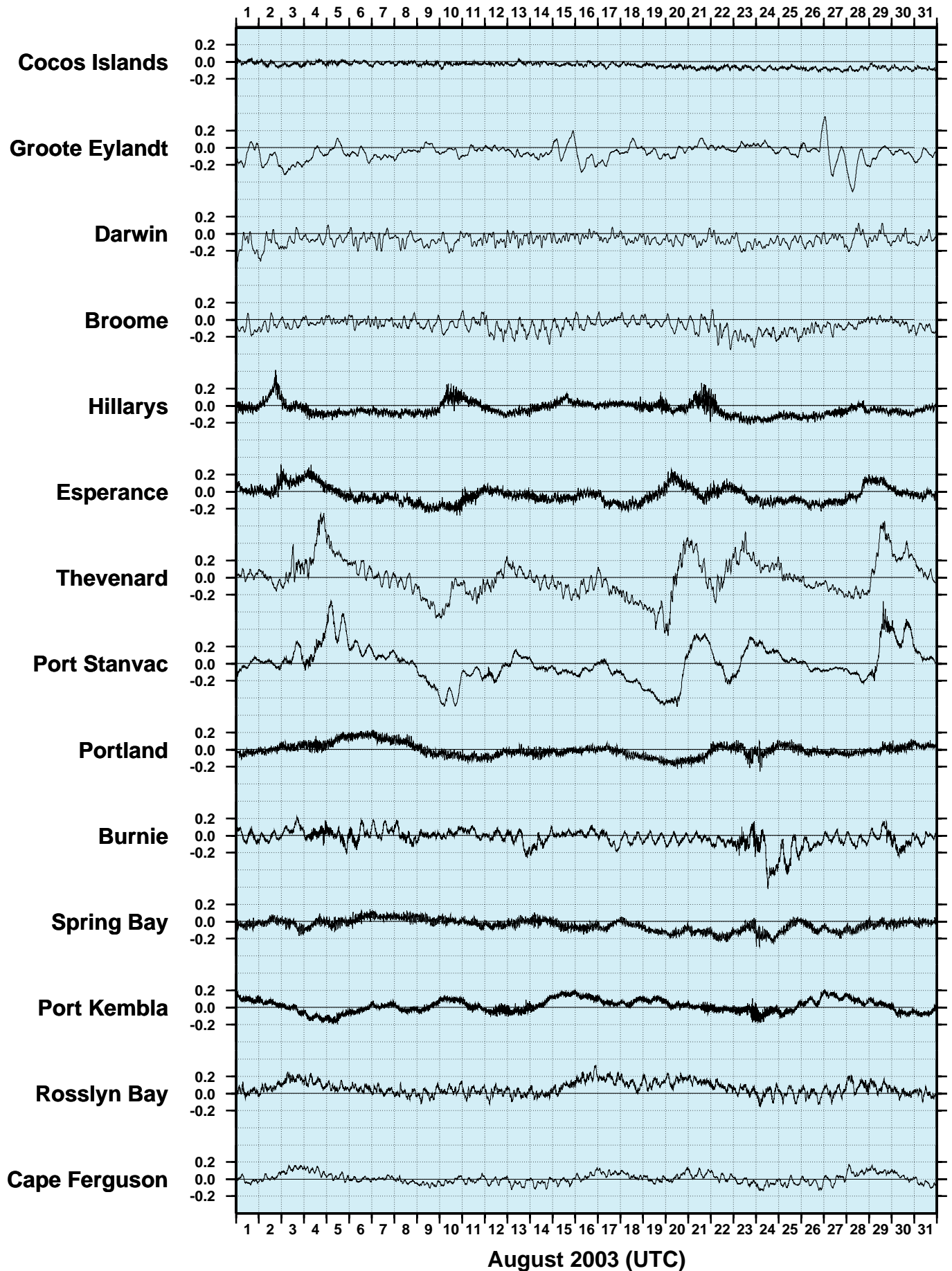


Figure 4

AUGUST 2003
HOURLY WIND SPEEDS (m/s)

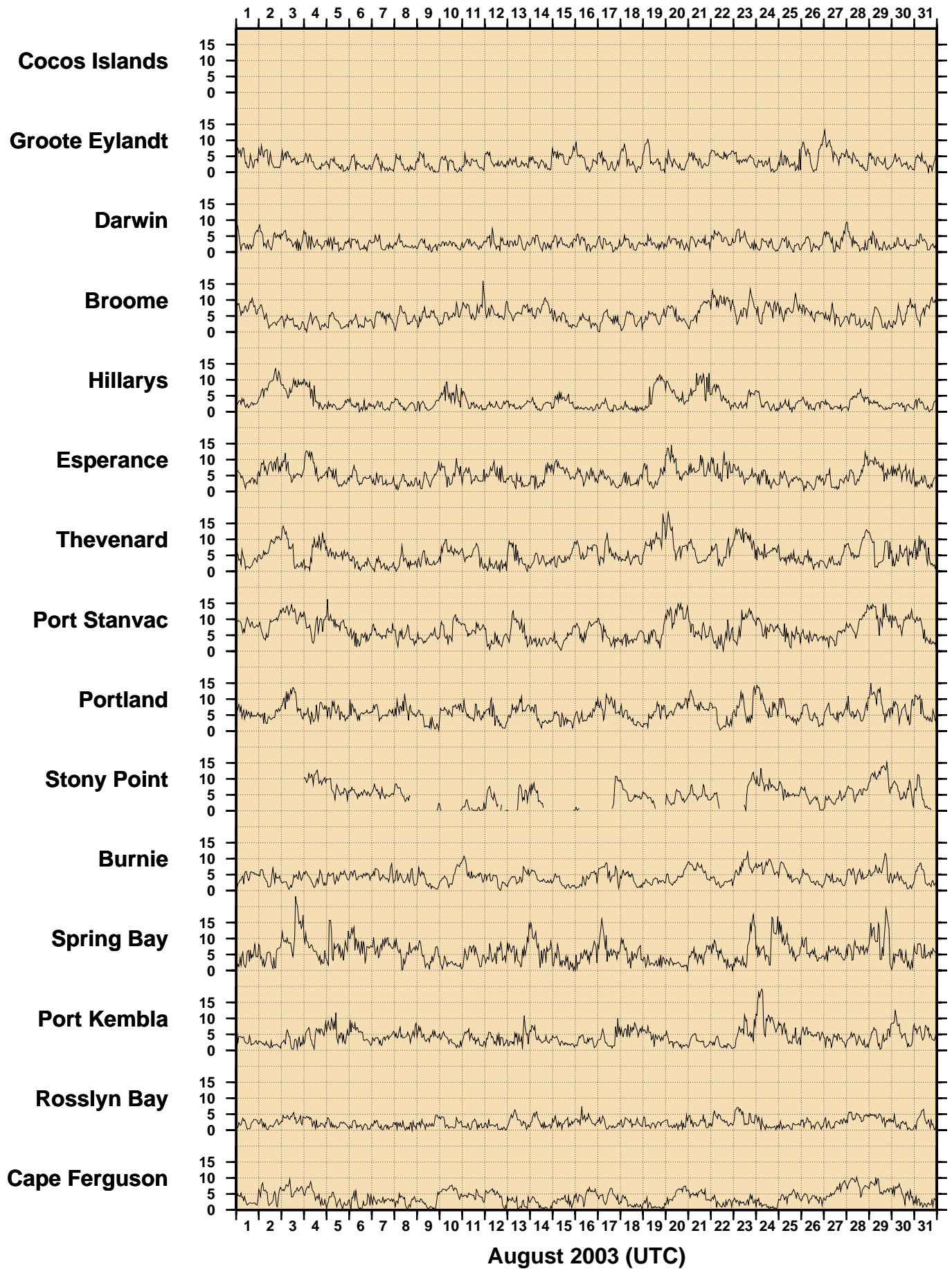


Figure 5

AUGUST 2003
HOURLY INCIDENT WINDS (m/s, deg True)

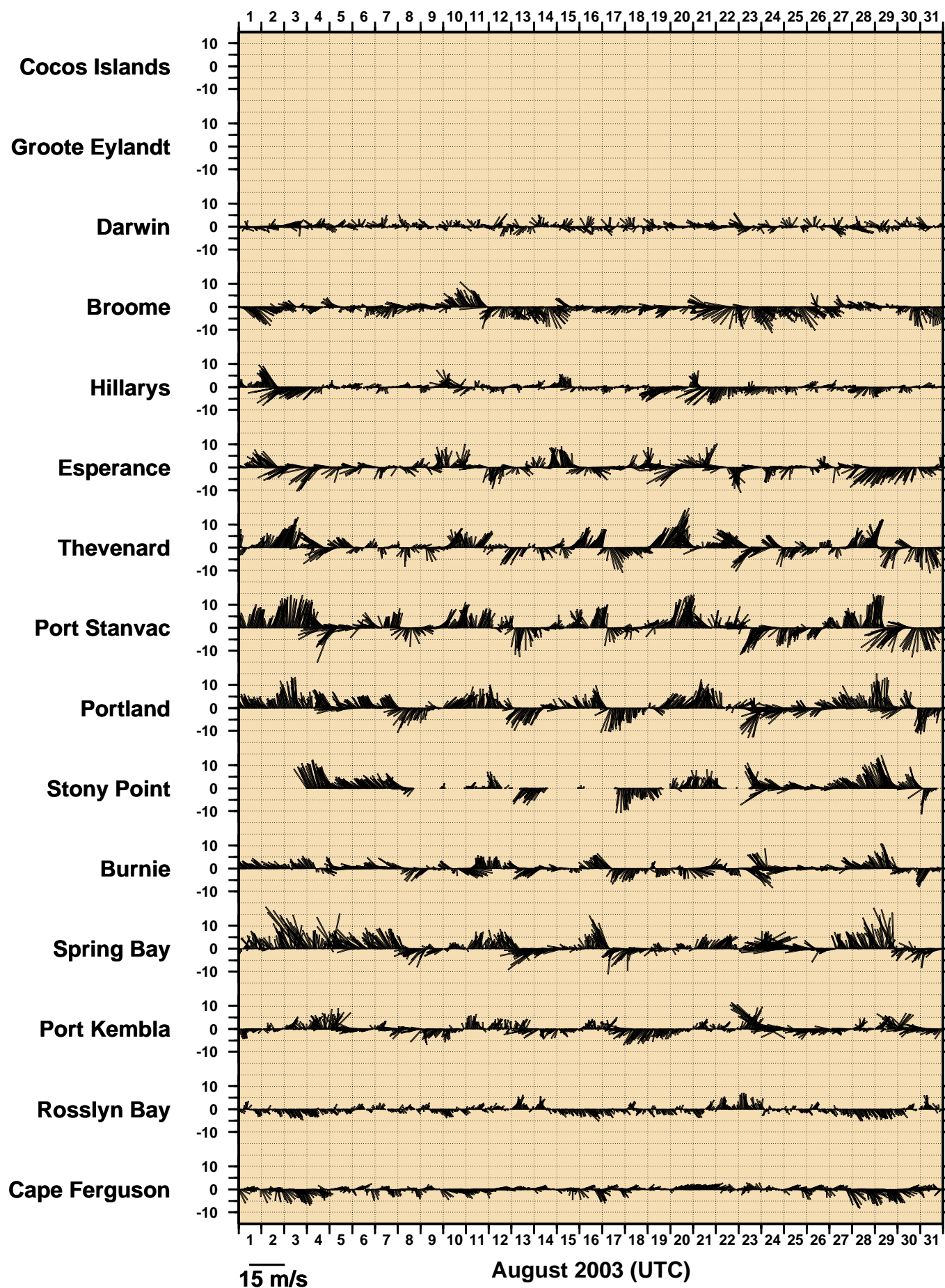


Figure 6

AUGUST 2003
HOURLY MAXIMUM WIND GUSTS (m/s)

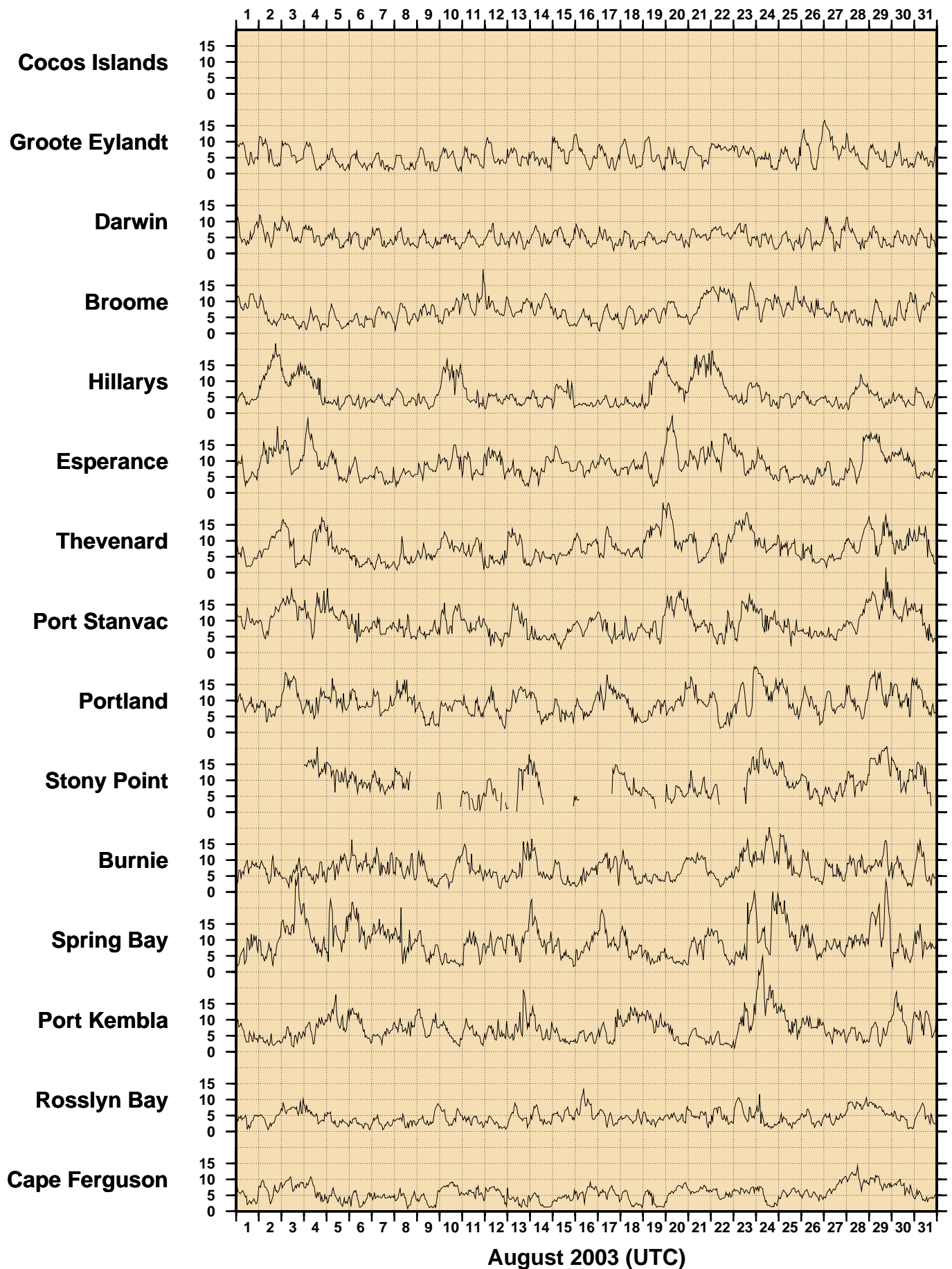


Figure 7

AUGUST 2003
HOURLY AIR TEMPERATURES (°C)

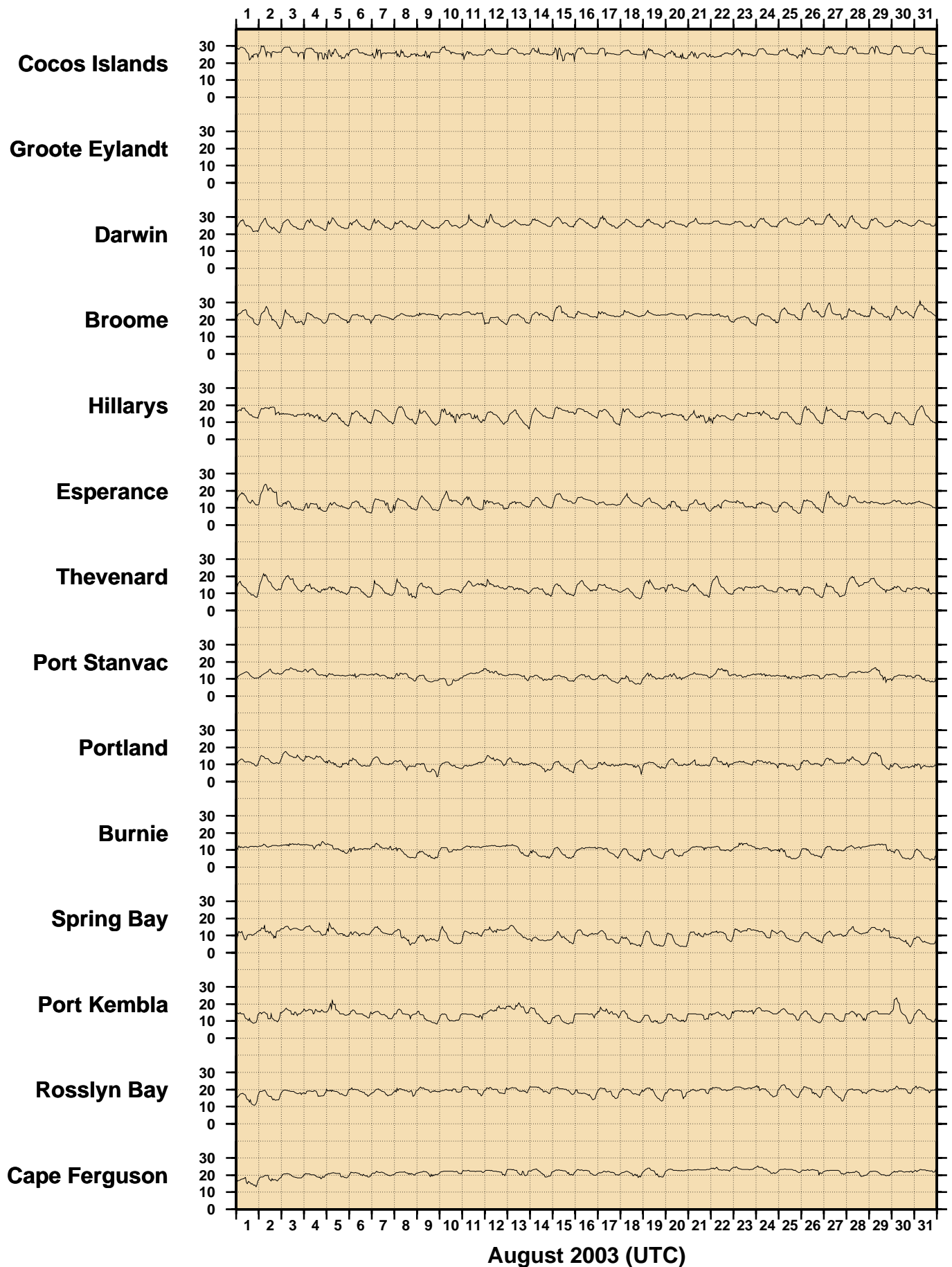


Figure 8

AUGUST 2003
HOURLY WATER TEMPERATURES (°C)

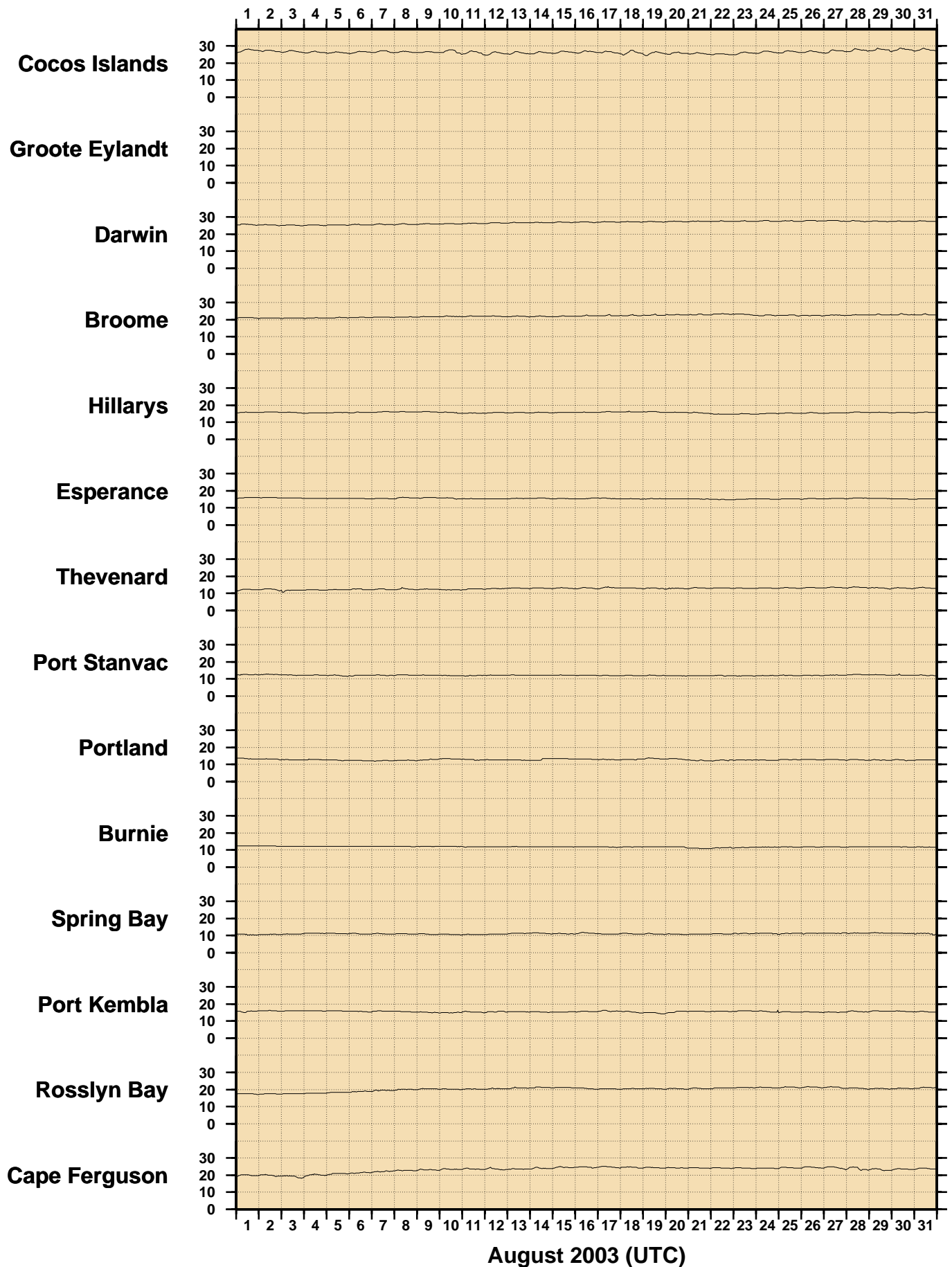


Figure 9

AUGUST 2003
HOURLY ATMOSPHERIC PRESSURE (hPa)

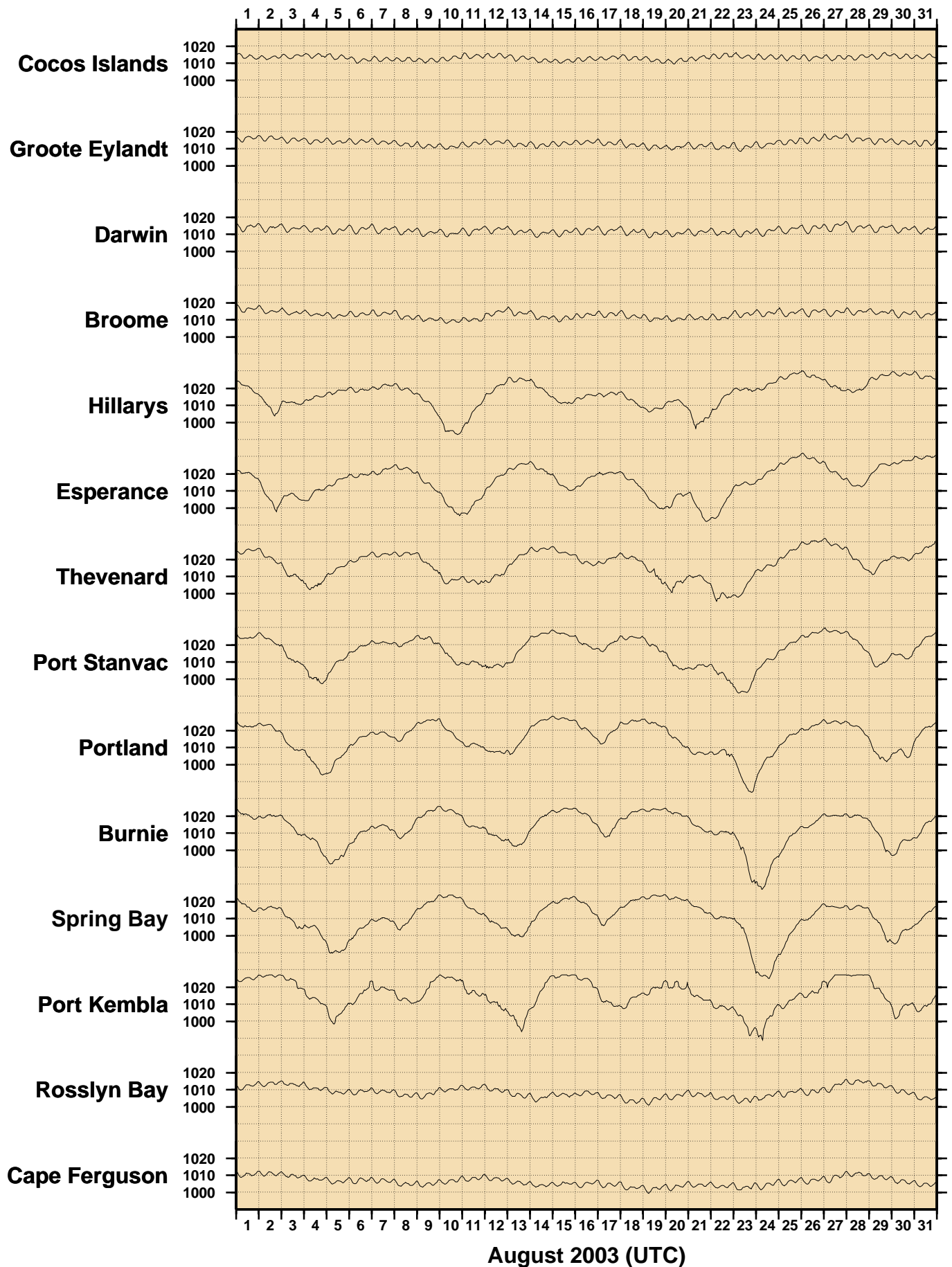


Figure 10
SEA LEVEL ANOMALIES THROUGH AUGUST 2003 (m)

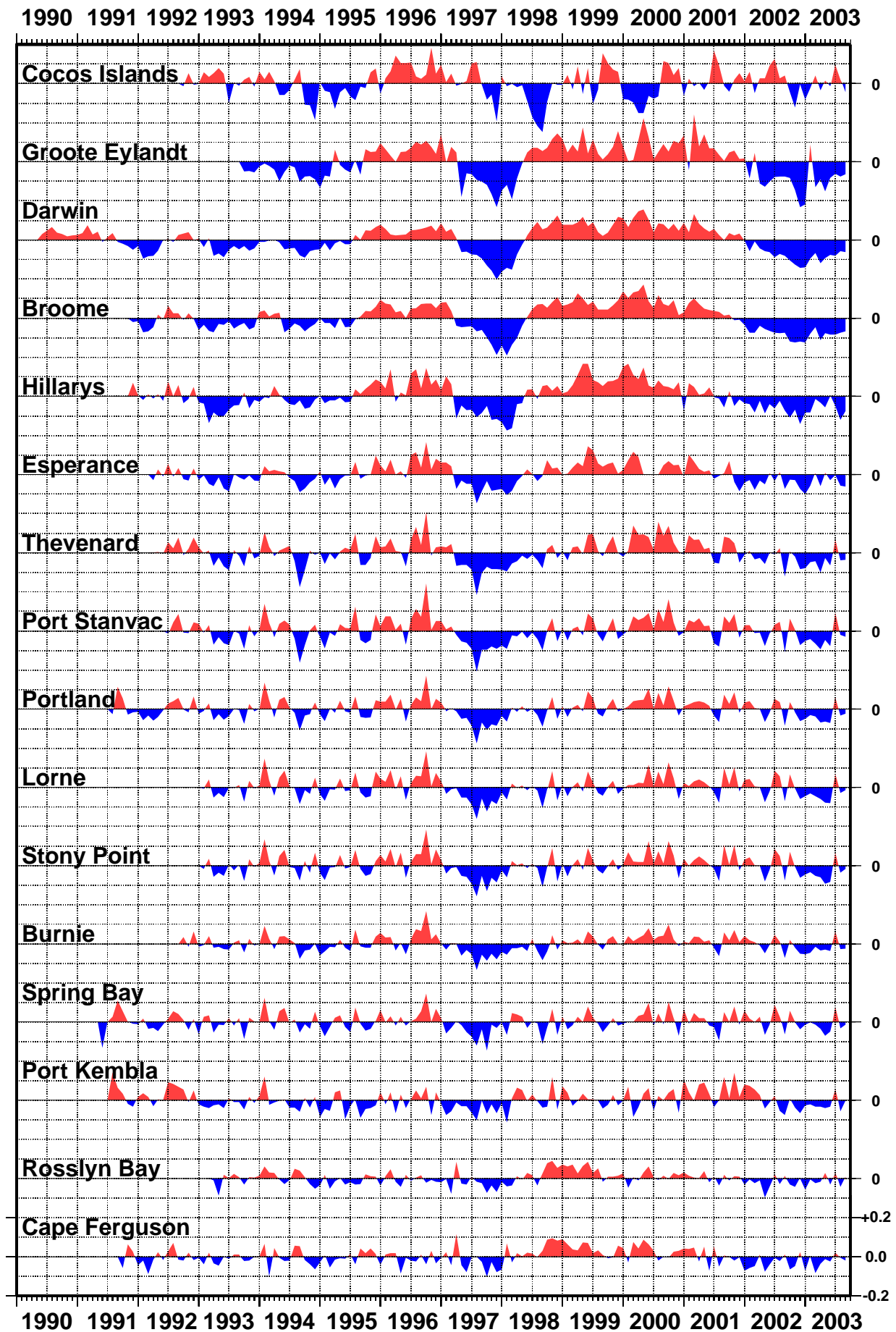


Figure 11

BAROMETRIC PRESSURE ANOMALIES THROUGH AUGUST 2003 (hPa)

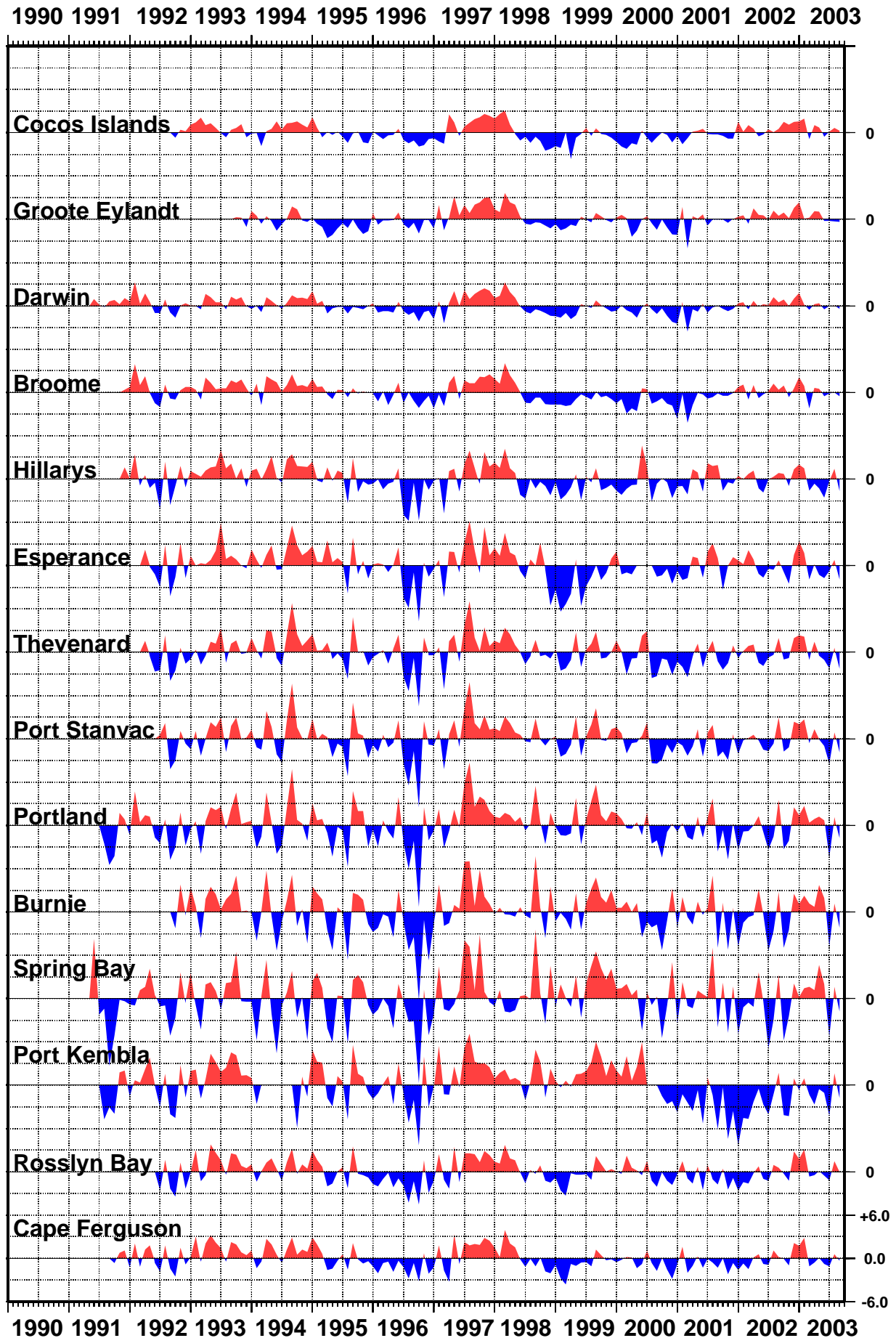


Figure 12

WATER TEMPERATURE ANOMALIES THROUGH AUGUST 2003 (°C)

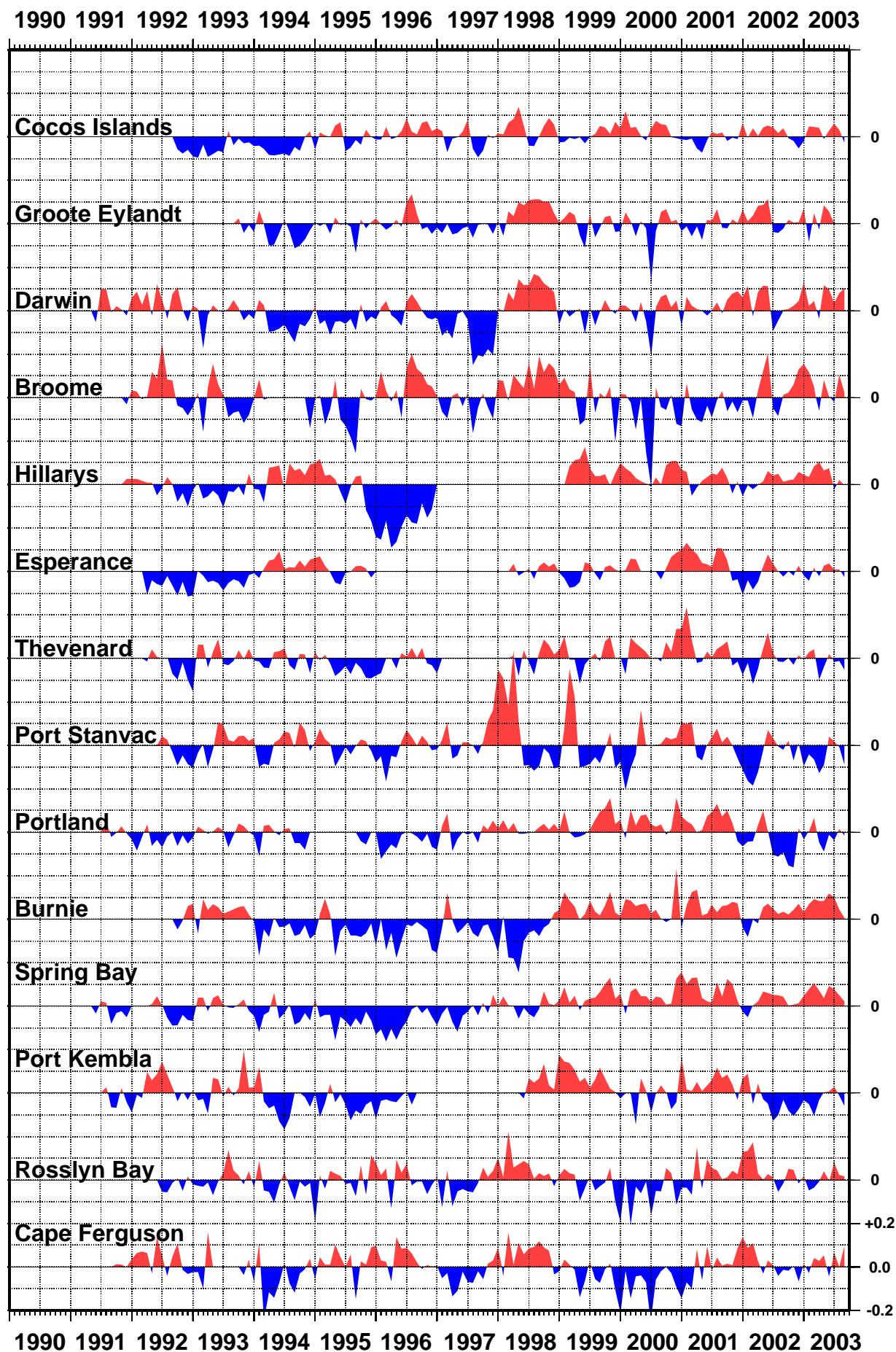


Figure 13
AIR TEMPERATURE ANOMALIES
THROUGH AUGUST 2003 (°C)

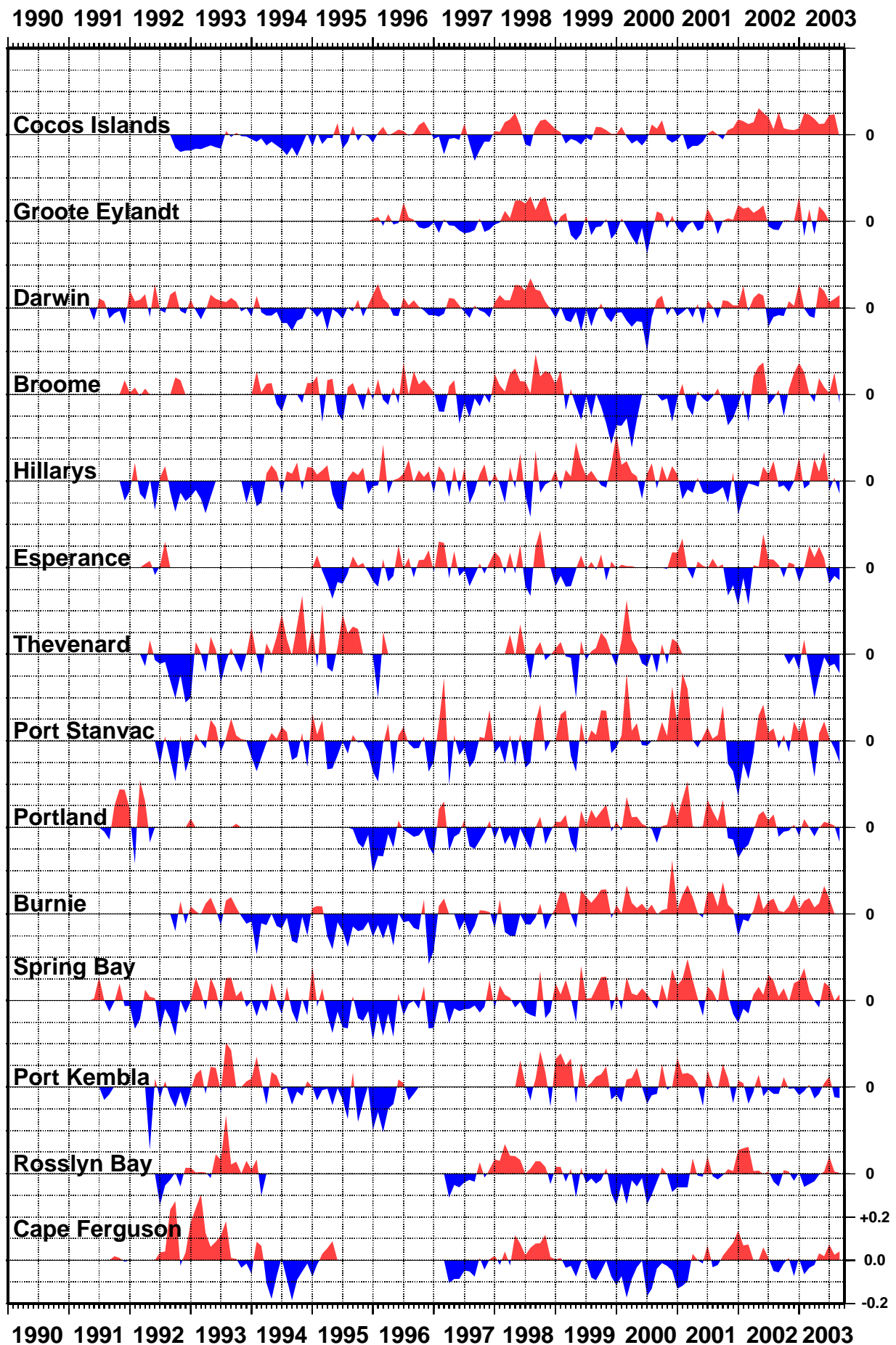
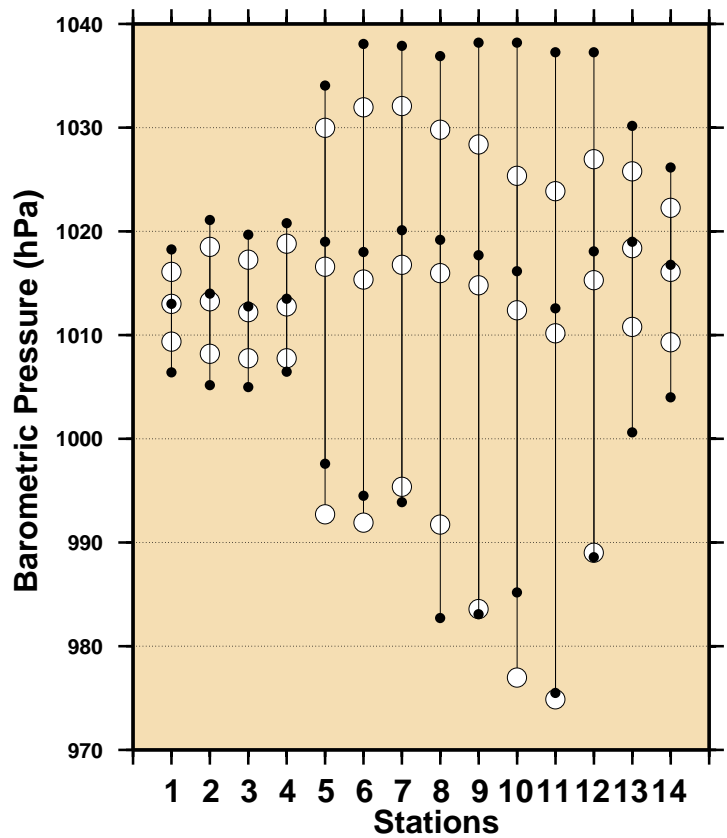
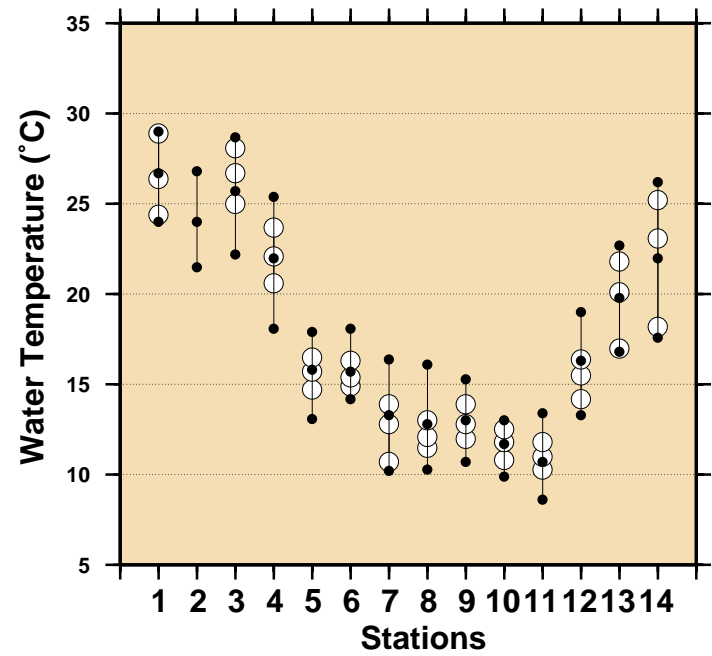
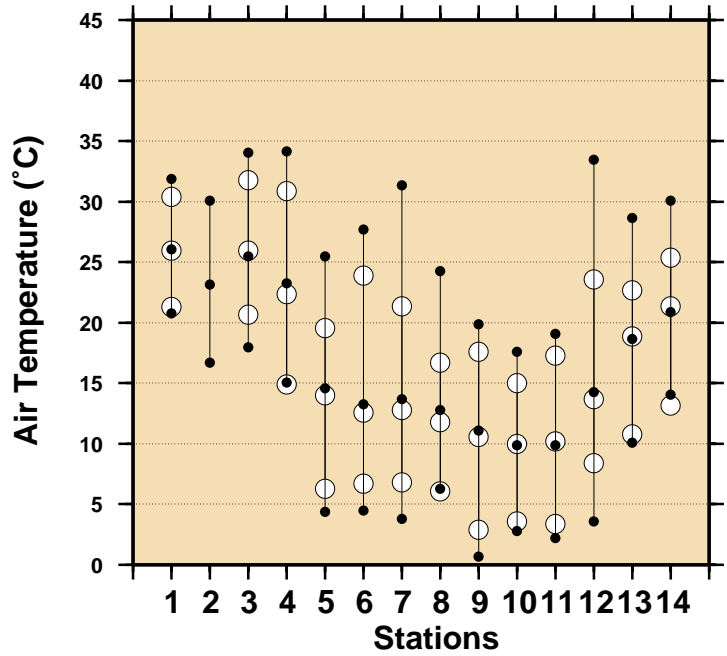


Figure 14
Comparison of August 2003 Max, Min & Mean with
Long Term August Values.



Stations

- 1 - Cocos Islands
- 2 - Groote Eylandt
- 3 - Darwin
- 4 - Broome
- 5 - Hillarys
- 6 - Esperance
- 7 - Thevenard
- 8 - Port Stanvac
- 9 - Portland
- 10 - Burnie
- 11 - Spring Bay
- 12 - Port Kembla
- 13 - Rosslyn Bay
- 14 - Cape Ferguson

- August 2003 Maximum
- August 2003 Mean
- August 2003 Minimum
- Long Term August Maximum
- Long Term August Mean
- Long Term August Minimum

Figure 15 SEA LEVEL DATA RETURN

THE NUMBER OF DAYS OF MISSING DATA ARE INDICATED
GAPS INCLUDE TRANSMISSION, POWER AND LOGGER FAILURE

* Patchy record

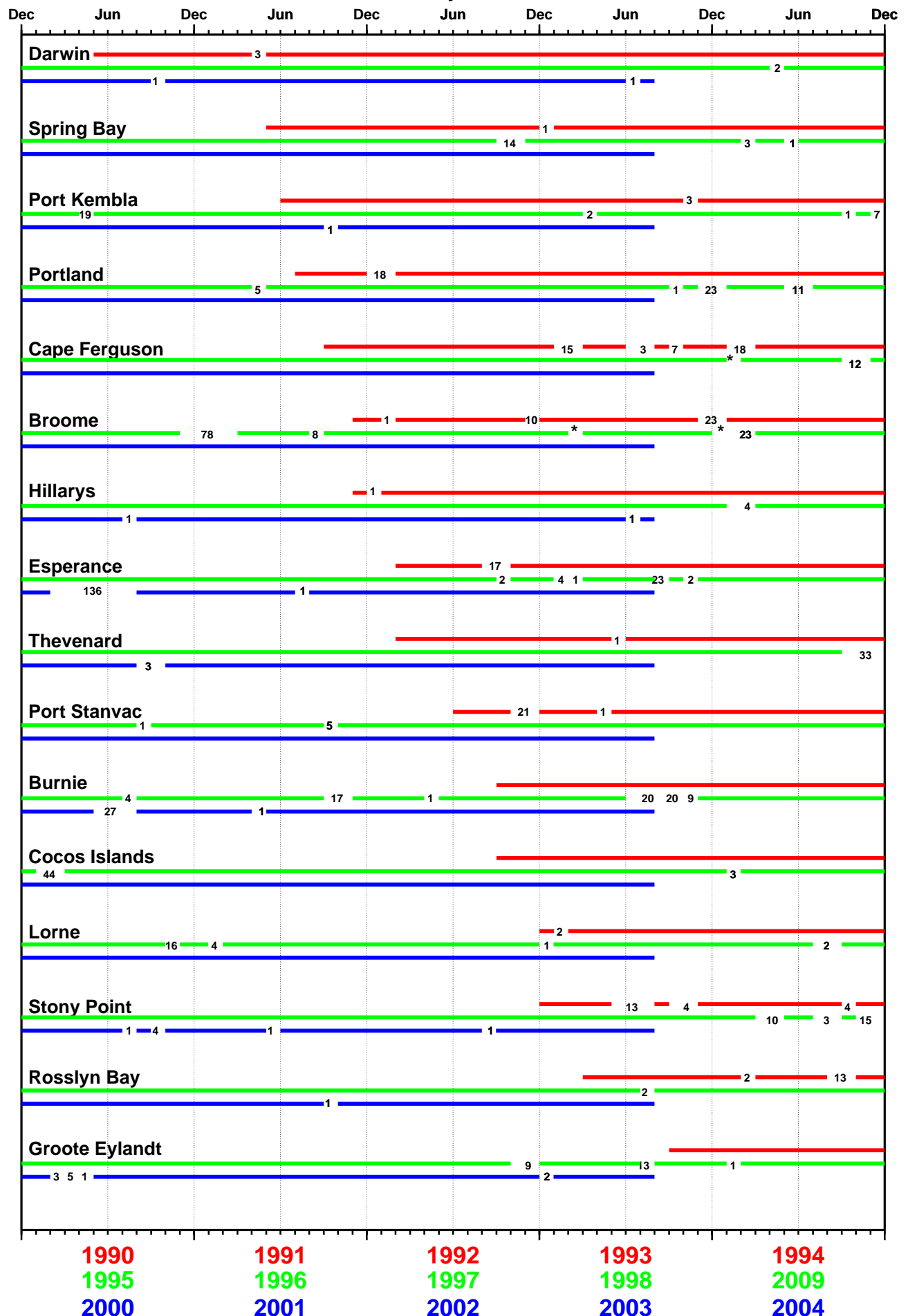


Figure 16

MONTHLY MEAN SEA LEVELS TO AUGUST 2003 (m)

The zero line represents an arbitrary fixed offset from the zero of the tide gauge.

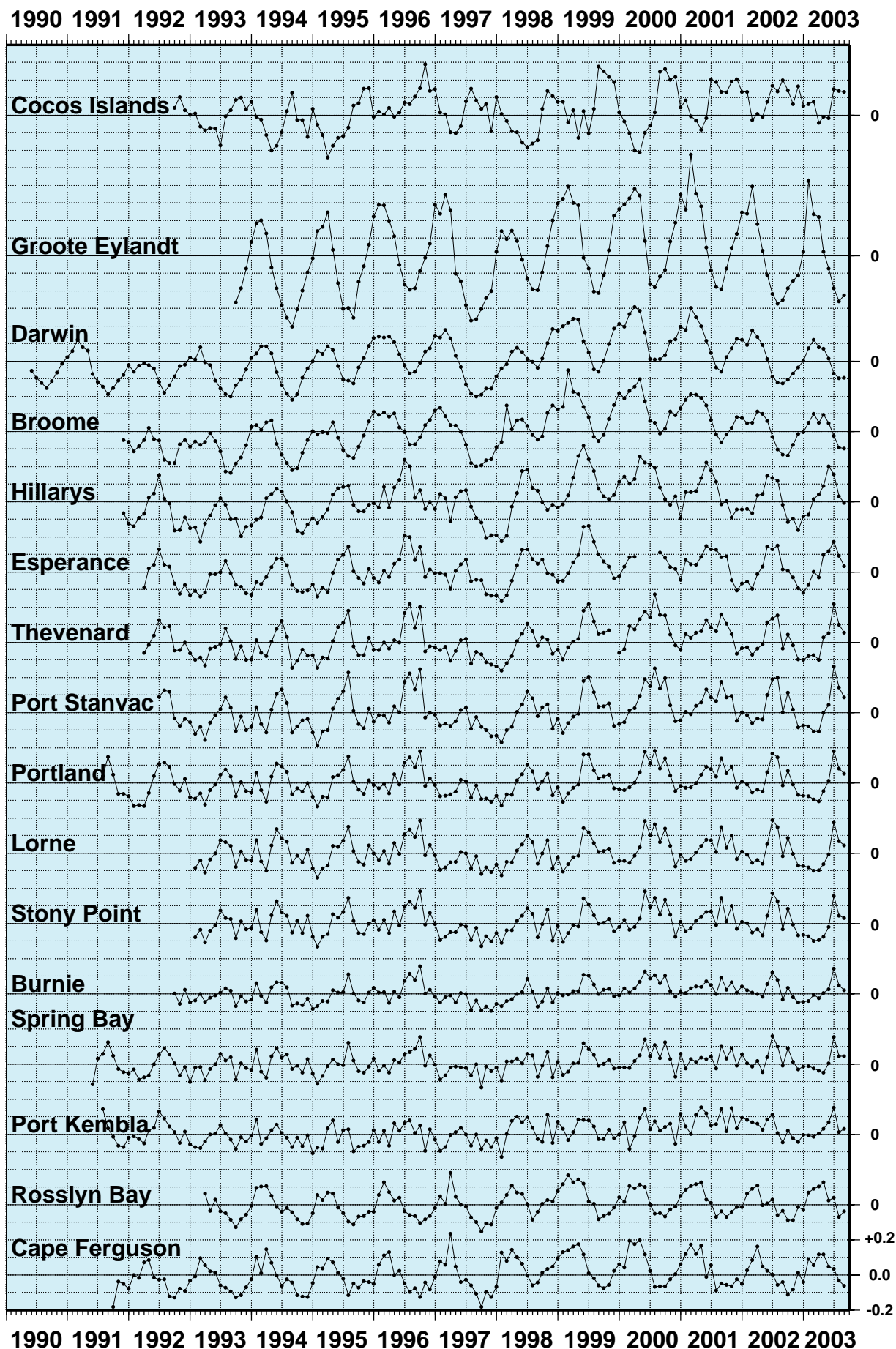


Figure 17

SEA LEVEL TRENDS THROUGH AUGUST 2003 (mm/year)

