



Australian Government
Bureau of Meteorology

Monthly Data Report – August 2014

Australian Baseline Sea Level Monitoring Array



Australian Government
Bureau of Meteorology

© Commonwealth of Australia 2014

This work is copyright. Apart from any use as permitted under the *Copyright Act 1968*, no part may be reproduced without prior written permission from the Bureau of Meteorology. Requests and inquiries concerning reproduction and rights should be addressed to the Publishing Unit, Bureau of Meteorology, GPO Box 1289, Melbourne 3001. Requests for reproduction of material from the Bureau website should be addressed to AMDISS, Bureau of Meteorology, at the same address.

Published by Bureau of Meteorology

Table of Contents

List of Tables	iv
List of Figures	iv
Executive Summary	1
Introduction	2
Sea Level and Climate	4
August SEAFRAME Data	5
Monthly Sea Level and Environmental Data	5
Monthly Means and Anomalies	7
Overall Rate of Movement in Sea Level	8
Instrument Performance	9
SEAFRAME Stations	10
Further Information	11
Online Resources	11
Acknowledgement	11
Appendix 1: SEAFRAME Data Figures	12

List of Tables

Table 1. Updated overall rates of sea level movement based on SEAFRAME data from installation through August, 2014.	8
Table 2. Rates of sea level data return.....	9

List of Figures

Figure 1. Australian Baseline Sea Level Monitoring Network of SEAFRAME stations.....	3
Figure 2. Schematic diagram of a SEAFRAME sea level monitoring station.....	10
Figure 3. Sea level observations during August 2014.	13
Figure 4. Residual sea levels during August 2014.	14
Figure 5. Residual sea levels adjusted for barometric pressure during August 2014.....	15
Figure 6. Wind speeds during August 2014.	16
Figure 7. Wind gusts during August 2014.	17
Figure 8. Incident winds during August 2014.	18
Figure 9. Air temperatures during August 2014.....	19
Figure 10. Water temperatures during August 2014.....	20
Figure 11. Barometric pressures during August 2014.	21
Figure 12. Comparison of August 2014 data with long-term August values.	22
Figure 13. Monthly mean sea levels to August 2014.....	23
Figure 14. Monthly mean barometric pressures to August 2014.	24
Figure 15. Monthly mean water temperatures to August 2014.....	25
Figure 16. Monthly mean air temperatures to August 2014.....	26
Figure 17. Monthly sea level anomalies to August 2014.	27
Figure 18. Monthly barometric pressure anomalies to August 2014.....	28
Figure 19. Monthly water temperature anomalies to August 2014.	29
Figure 20. Monthly air temperature anomalies to August 2014.	30
Figure 21. Sea level data return.	31

Executive Summary

This summary, and the overview that follows, are intended to provide a synopsis of the recent month's observations in addition to longer term variations over the life of the project to date.

August 2014

- The Australian Baseline Sea Level Monitoring Array (ABSLMA) network continued to collect high quality sea level and associated meteorological information to support long-term sea level monitoring around Australia.
- The station at Port Stanvac remains dismantled, while routine workplace-safety power shutdowns continue to be enforced at Broome when fuel tankers are in dock resulting in the loss of approximately 48 hours of data.
- The sea level anomalies at every ABSLMA site, except Rosslyn Bay and Cape Ferguson, for this month were negative. Furthermore, the overwhelming majority of sites reported sea level anomalies with magnitudes exceeding 5 cm.
- A new minimum August sea level was observed at Burnie, which also registered a new maximum August water temperature. A new maximum August barometric pressure was recorded at Broome.

Introduction

Welcome to the August 2014 Monthly Data Report for the Australian Baseline Sea Level Monitoring Array (ABSLMA). The report details the month by month operation of SEAFRAME sea level monitoring stations around Australia, including operational problems with the network and the occurrence of abnormal sea level events in the context of related astronomical tide, weather and climate variations. A companion array of SEAFRAME sea level monitoring stations in Pacific Island Countries is supported under the Pacific Sea Level Monitoring Project.

The ABSLMA was originally developed and supported from grants under the Australian Climate Change Science Program through the Department of Climate Change and Energy Efficiency, with a primary goal to monitor long-period sea level changes around Australia focussing particularly on the enhanced greenhouse effect. Operation of the array continues to be supported by the Bureau of Meteorology, underpinning the advanced technologies gathering global observations for climate change research as well as providing real-time information for tidal monitoring and tsunami detection.

The Baseline sea level monitoring array consists of 14 standard SEAFRAME stations operated by the Bureau of Meteorology at representative sites around Australia, as well as two customised,

privately-owned stations at Lorne and Stony Point (Figure 1). The SEAFRAME at Port Stanvac was removed in November 2010 to allow Mobil Refining Australia to decommission the oil refinery. Re-establishment of the SEAFRAME station at Port Stanvac is dependent on longer-term decisions relating to the future of the wharf.

The standard SEAFRAME stations not only measure sea level, but also observe a number of “ancillary” variables - air and water temperatures, wind speed, wind direction and barometric pressure. The privately-owned stations at Lorne and Stony Point do not measure the ancillary variables, although winds are measured at Stony Point.

The Bureau of Meteorology and Geosciences Australia, through their membership on the Intergovernmental Committee on Surveying and Mapping (ICSM) Permanent Committee on Tides & Mean Sea Level (PCTMSL), strive to sustain geodetic levelling programs implemented by various state surveying organisations in order to monitor shifts in the vertical of the sea level sensors due to local land movement.

Observations collected by the sea level monitoring network are routinely processed into a range of quality-controlled data products. The monthly data report is the primary source of up-to-date information relating to these data products.

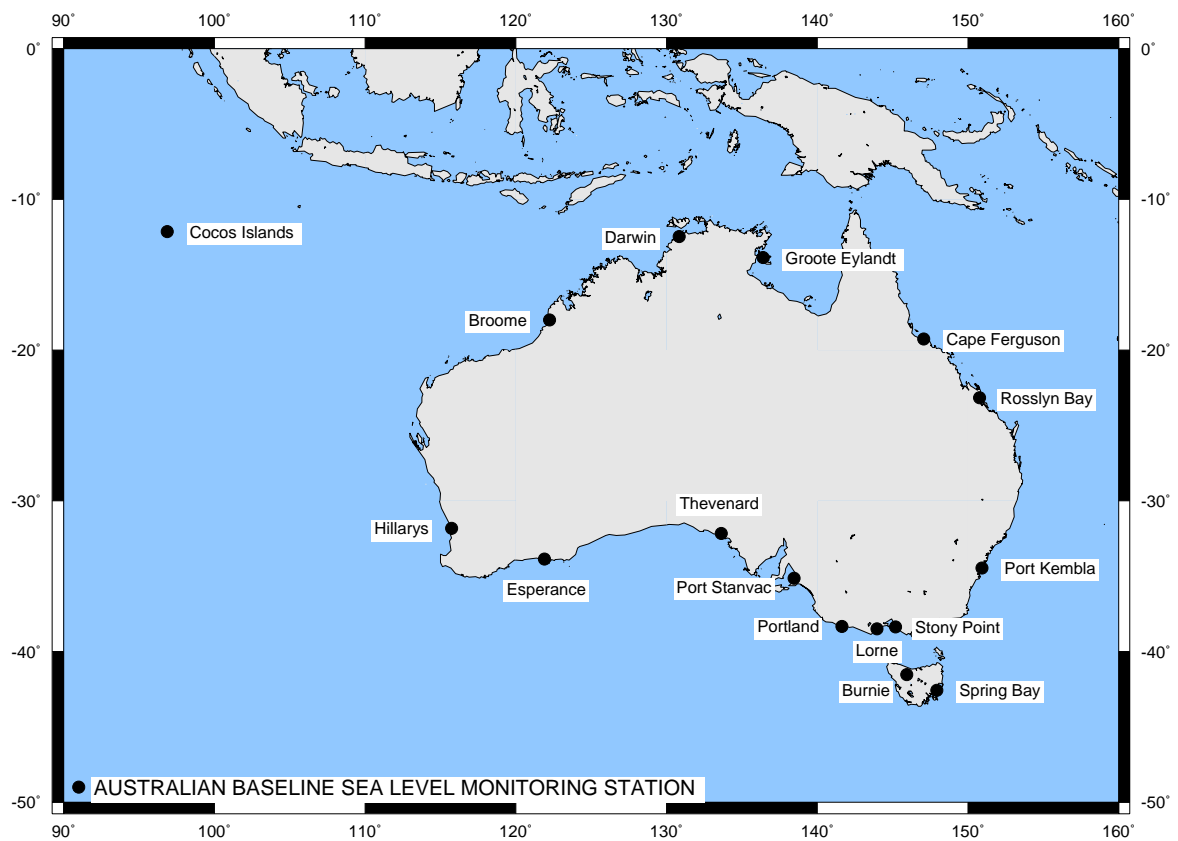


Figure 1. Australian Baseline Sea Level Monitoring Network of SEAFRAME stations.

Sea Level and Climate

Astronomical tides and weather conditions are largely responsible for daily perturbations in sea level, but over monthly, seasonal and longer timescales sea levels around Australia are largely influenced by fluctuations in climate and ocean heat content.

Intra-annual or seasonal changes in sea level are closely linked to the annual solar radiation cycle and associated shifts in weather patterns and ocean current systems. Across southern Australia, sea levels tend to be at their highest during winter, while the opposite is true across northern Australia, where sea levels tend to be higher during the summer wet season. Further information relating to seasonal climate variations around Australia is provided by the Bureau of Meteorology at <http://www.bom.gov.au/climate/>

Inter-annual sea level variations are largely influenced by the El Niño – Southern Oscillation climate cycle, particularly across the northern and

western Australian coastlines. Sea levels are generally lower than normal around Australia during El Niño, in response to cooler than normal ocean temperatures and higher than normal barometric pressures that are brought about by weaker than normal easterly Trade Winds across the Pacific. Conversely, during La Niña sea levels around Australia are generally higher than normal, in association with warmer than normal ocean temperatures and lower than normal barometric pressures, due to stronger than normal easterly Trade Winds across the Pacific.

A summary of recent and past El Niño – Southern Oscillation climate conditions is provided by the Bureau of Meteorology at <http://www.bom.gov.au/climate/enso/>

August SEAFRAME Data

Monthly Sea Level and Environmental Data

The observed sea levels (Figure 3) are dominated by the daily oscillations of the tide. In most cases, the tide rises and falls twice per day (semi-diurnal), but at Groote Eylandt and Hillarys the tide tends to have a single high and low per day (diurnal). Where the tides follow a semi-diurnal pattern the greatest tidal variations are called spring tides, which tend to occur around the time of the full and new moons. A full moon fell on the 10th of August whilst the new moon fell on the 25th of August (UTC).

Gaps in the data are the result of instrumental errors or data retrieval problems and are discussed under Instrument Performance.

The residuals (Figure 4) are the differences between the observed sea levels and the astronomical tidal predictions. They highlight non-tidal sea level fluctuations, such as those due to the effects of weather or tsunamis. Low pressure systems can produce storm surges where the combination of low barometric pressure and strong winds raise sea levels well above the predicted astronomical tides for a period of a day or more. The non-tidal sea level fluctuations can be amplified or sustained by the shape of the bay or harbour in which the gauge is located. Some of the SEAFRAME stations are located in harbours that exhibit 'sloshing' under certain conditions (a phenomenon referred to as a seiche).

The sea level residuals at all stations, to some degree, exhibit semi-diurnal or diurnal fluctuations, which last a few days or weeks and then disappear.

If these fluctuations were to persist they would form part of the astronomical tide prediction and thus not appear as residuals. Consequently semi-diurnal and diurnal residual fluctuations will always be transient in nature.

The barometrically corrected residuals (Figure 5) have had a major part of the effect of atmospheric pressure fluctuations removed from the sea level residuals of Figure 4. The rule of thumb for the 'inverse barometer effect' is that a 1-hPa fall in the barometer, if sustained over a day or more, produces a 1-cm rise in the local sea level (within the area beneath the low pressure system).

The winds, temperatures and barometric pressures are plotted in Figure 6 to Figure 11. The incident winds in Figure 8 follow the meteorological convention, that is, they point in the direction the wind is coming from. For example, the winds at Broome prevailed from the south-east for the 10th through 16th days of August inclusive.

Air and water temperatures (Figure 9 and Figure 10) are plotted using the same vertical scale for the purpose of comparison. The air temperatures are seen to fluctuate over a much wider range than the water temperatures.

Barometric pressures (Figure 11) tend to fluctuate by around 3 hPa twice-daily at all stations as a result of atmospheric tides, which are largest in the tropical regions and reduce to near zero toward the poles. The longer-term barometric pressure

fluctuations that occur over periods of days to weeks are due to passing weather systems. These fluctuations tend to be larger at sites farther away from the equator, particularly those along the southern Australian coastline.

The monthly data extremes are put into perspective by Figure 12. In this figure, if an open circle falls above (below) a solid dot, a new maximum (minimum) for the particular month has been set. The data sets only include the ABSLMA data, which have been collected since May 1990 when the first station was installed at Darwin.

During this month Burnie recorded a new minimum August sea level (0.052 m) and a new August maximum water temperature (13.1 °C). A new maximum August barometric pressure was observed at Broome (1022.4 hPa). No new August air temperature extremum was observed at any ABSLMA site this month.

Further sea level and meteorological statistical information is available at

<http://www.bom.gov.au/oceanography/projects/abslmp/data/monthly.shtml>

Monthly Means and Anomalies

Figure 13 through Figure 16 show the monthly means, or simple arithmetic averages, for sea level, barometric pressure, water temperature and air temperature. The monthly means demonstrate the seasonal variations of the recorded parameters.

Groote Eylandt, for example, normally experiences an annual sea level cycle of about 0.6 m that peaks around February. Record mean barometric pressures were observed at Broome (1015.9 hPa), Portland (1026.8 hPa) and Burnie (1025.6 hPa).

Figure 17 through Figure 20 show the monthly mean sea level, barometric pressure, air temperature and water temperature anomalies. The sea level anomalies are the residuals after tides, annual and semi-annual seasonal cycles and linear slope have been removed by way of harmonic tidal analysis of the complete record. The annual sea level cycle at Groote Eylandt (which has the largest consistent annual cycle) is quite notable in Figure 13 but less apparent in Figure 17. By removing the seasonal cycles, the anomalies help to bring out irregular features, such as lower than normal sea levels around much of Australia during the 1997/98 El Niño.

The sea level anomalies this month have been quite extreme all over Australia. This month the sea level anomalies at all ABSLMA sites were negative in nature, with the exception of Rosslyn bay and Cape Ferguson. Furthermore the magnitude of every sea level anomaly, with the exception of Hillarys and Port Kembla, exceeded 5 cm. Sea level anomalies

exceeding 10 cm in magnitude were observed at Groote Eylandt (-12.5 cm), Thevenard (-17.5 cm), Portland (-12.5 cm), Lorne (-12.9 cm), Stony Point (-11.9 cm) and Spring Bay (-10.5 cm).

The anomalies of barometric pressure (Figure 18), water and air temperature (Figure 19 and Figure 20 respectively) are determined in the same manner as the sea level anomalies, except the linear slope is not calculated.

Barometric pressure anomalies were positive in nature at every ABSLMA site that had a barometer, with the exception of Cocos Island. Record barometric pressure anomalies were observed at Thevenard (+7.0 hPa), Portland (+10.1 hPa), Burnie (+11.0 hPa), Spring Bay (+12.1 hPa) and Port Kembla (7.5 hPa) whilst an anomaly of 6.1 hPa was observed at Esperance.

Positive water temperature anomalies greater than 0.5 °C were observed at Cocos Island (+0.5 °C), Hillarys (+1.0 °C), Portland (+0.5 °C), Burnie (+0.6 °C) and Spring Bay (+0.7 °C). Negative anomalies less than -0.5 °C were observed at Darwin (-0.6 °C) and Broome (-1.0 °C). Significant positive air temperature anomalies were observed at Cocos Island (+0.5 °C) and Hillarys (+1.8 °C) whilst negative air temperature anomalies were observed at Groote Eylandt (-0.5 °C), Darwin (-0.5 °C), Thevenard (-0.7 °C) and Port Kembla (-0.9 °C).

Overall Rate of Movement in Sea Level

Table 1 shows the overall rate of movement in sea level at individual Australian Baseline stations based on the data so far collected at those sites. For many of the sites, the underlying data sets now exceed twenty years in length.

Please exercise caution in interpreting the overall rates of movement of sea level – the records are too short to be inferring long-term trends.

The overall rates of movement are updated every month by calculating the linear slope during the tidal analysis of all the data available at individual stations.

Table 1. Updated overall rates of sea level movement based on SEAFRAME data from installation through August, 2014.

Location	Latitude	Longitude	Date of first data	Rate ¹ (mm/yr)	Change in rate from previous month (mm/yr)
Cocos Island	12°07'07.1"S	96°53'30.9"E	Sep 1992	+8.3	-0.1
Groote Eylandt	13°51'36.2"S	136°24'56.1"E	Sep 1993	+8.3	-0.2
Darwin	12°28'18.4"S	130°50'45.1"E	May 1990	+8.4	-0.1
Broome	18°00'03.0"S	122°13'07.1"E	Nov 1991	+9.0	-0.1
Hillarys	31°49'32.0"S	115°44'18.9"E	Nov 1991	+10.0	0.0
Esperance	33°52'15.2"S	121°53'43.3"E	Mar 1992	+6.7	-0.1
Thevenard	32°08'56.2"S	133°38'28.8"E	Mar 1992	+5.4	-0.2
Port Stanvac ²	35°06'31.0"S	138°28'1.3"E	Jun 1992	+4.7	0.0
Portland	38°20'36.4"S	141°36'47.4"E	Jul 1991	+3.8	-0.1
Lorne	38°32'49.4"S	143°59'19.8"E	Jan 1993	+3.5	-0.1
Stony Point	38°22'19.7"S	145°13'28.9"E	Jan 1993	+3.4	-0.1
Burnie	41°03'0.3"S	145°54'54.0"E	Sep 1992	+3.6	-0.1
Spring Bay	42°32'45.1"S	147°55'57.8"E	May 1991	+3.8	-0.1
Port Kembla	34°28'25.5"S	150°54'42.7"E	Jul 1991	+3.5	0.0
Rosslyn Bay	23°09'39.7"S	150°47'24.6"E	Jun 1992	+4.7	+0.1
Cape Ferguson	19°16'38.4"S	147°03'30.4"E	Sep 1991	+4.8	+0.1

¹Relative to SSBM (SEAFRAME Sensor Bench Mark)

²Port Stanvac decommissioned November 2010

Instrument Performance

In Figure 21, which shows sea level data return, the columns represent the percentage of quality-controlled data returned from the gauge each month.

Sea level data return from the network was 99.4% (93.2% including Port Stanvac) during August 2014 (Table 2). As mentioned previously, no data has been collected from Port Stanvac since November 2010 following the removal of the station to allow Mobil Refining Australia to rehabilitate and vacate the Port Stanvac oil refinery precinct. The Broome

Port Authority's policy of switching off the power when fuel ships are in dock resulted in the loss of approximately 48 hours of Broome data this month. No ABSLMA tide gauge site was scheduled for a calibration and maintenance visit this month.

The anemometers at Esperance and Groote Eylandt continued to be switched off during the month of August as ongoing issues with the installation of anemometers at those sites have not yet been rectified.

Table 2. Rates of sea level data return.

Location	Installation Date	Data Return Since Installation (%)	Data Return in August 2014 (%)
Cocos Islands	Sep 1992	99.5	100
Groote Eylandt	Sep 1993	98.8	100
Darwin	May 1990	99.8	98.8
Broome	Nov 1991	97.8	93.7
Hillarys	Nov 1991	99.9	100
Esperance	Mar 1992	98.1	100
Thevenard	Mar 1992	99.5	100
Port Stanvac ¹	Jun 1992	85.2	0.0
Portland	Jul 1991	99.3	100
Lorne	Jan 1993	94.5	99.6
Stony Point	Jan 1993	99.0	100
Burnie	Sep 1992	98.6	100
Spring Bay	May 1991	99.7	99.4
Port Kembla	Jul 1991	99.5	100
Rosslyn Bay	Jun 1992	96.3	100
Cape Ferguson	Sep 1991	98.2	100
Network Average		97.7	93.2

¹Port Stanvac decommissioned November 2010

SEAFRAME Stations

Standard SEAFRAME stations now employ a TELMET (previously SUTRON) programmable data logger, water level gauges and other sensors. The data logger and associated electronics are normally housed in fibreglass huts. A sketch of a typical SEAFRAME station is shown in Figure 2.

Water level sensors include:

1. Primary water level using a Bartex 'AQUATRAK' acoustic-in-air sensor,
2. Secondary water level (or backup) using a Druck pressure transducer mounted close to the seabed, and
3. Tertiary water level using a Vega-puls62 radar sensor mounted above the water.

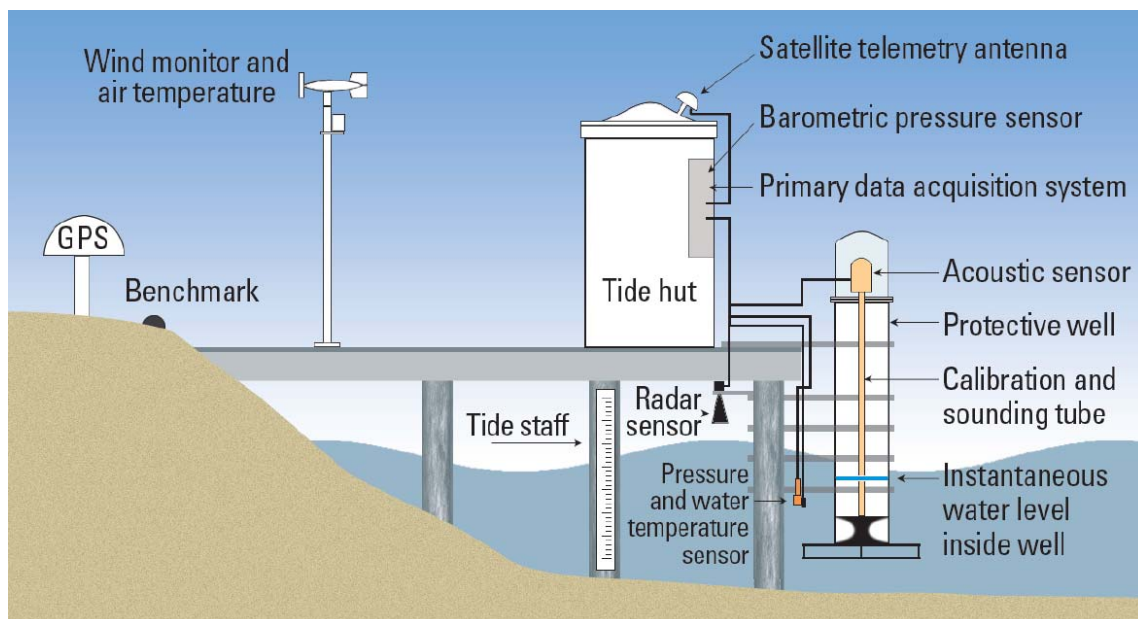


Figure 2. Schematic diagram of a SEAFRAME sea level monitoring station.

Further Information

Online Resources

ABSLMA Web site: <http://www.bom.gov.au/oceanography/projects/abslmp/abslmp.shtml>

ABSLMA Levelling Survey (Geosciences Australia): ftp://ftp.ga.gov.au/geodesy-outgoing/local_tie/TideGaugeLeveling/ABSLMA/

Ocean Forecasts: <http://www.bom.gov.au/oceanography/forecasts>

ENSO Wrap-Up - El Niño / La Niña information: <http://www.bom.gov.au/climate/enso/>

Sea Level Rise (CSIRO): <http://www.cmar.csiro.au/sealevel/index.html>

Acknowledgement

The Monthly Data Report is prepared by the Bureau of Meteorology.

Further enquiries about the Monthly Data Report may be made to:

Bureau of Meteorology
PO Box 421
Kent Town SA 5067
Tel: (+618) (08) 8366 2730
Email: ntc@bom.gov.au
Website: <http://www.bom.gov.au/oceanography/tides.shtml>

Please also note the following:

While care has been taken in the collection, analysis, and compilation of the data, it is supplied on the condition that the Commonwealth of Australia shall not be liable for any loss or injury whatsoever arising from the use of the data. Copyright for material contained in this document is held by the Commonwealth of Australia.

Appendix 1: SEAFRAME Data Figures

Please note: The privately-owned stations at Stony Point and Lorne do not record air temperature, water temperature and barometric pressure data and are not present in Figures 5, 9, 10, 11 and 12. The tide gauge at Lorne does not record wind data and is not present in Figures 6, 7 and 8.

SIX MINUTE SEA LEVEL OBSERVATIONS (m)

August 2014 (UTC)

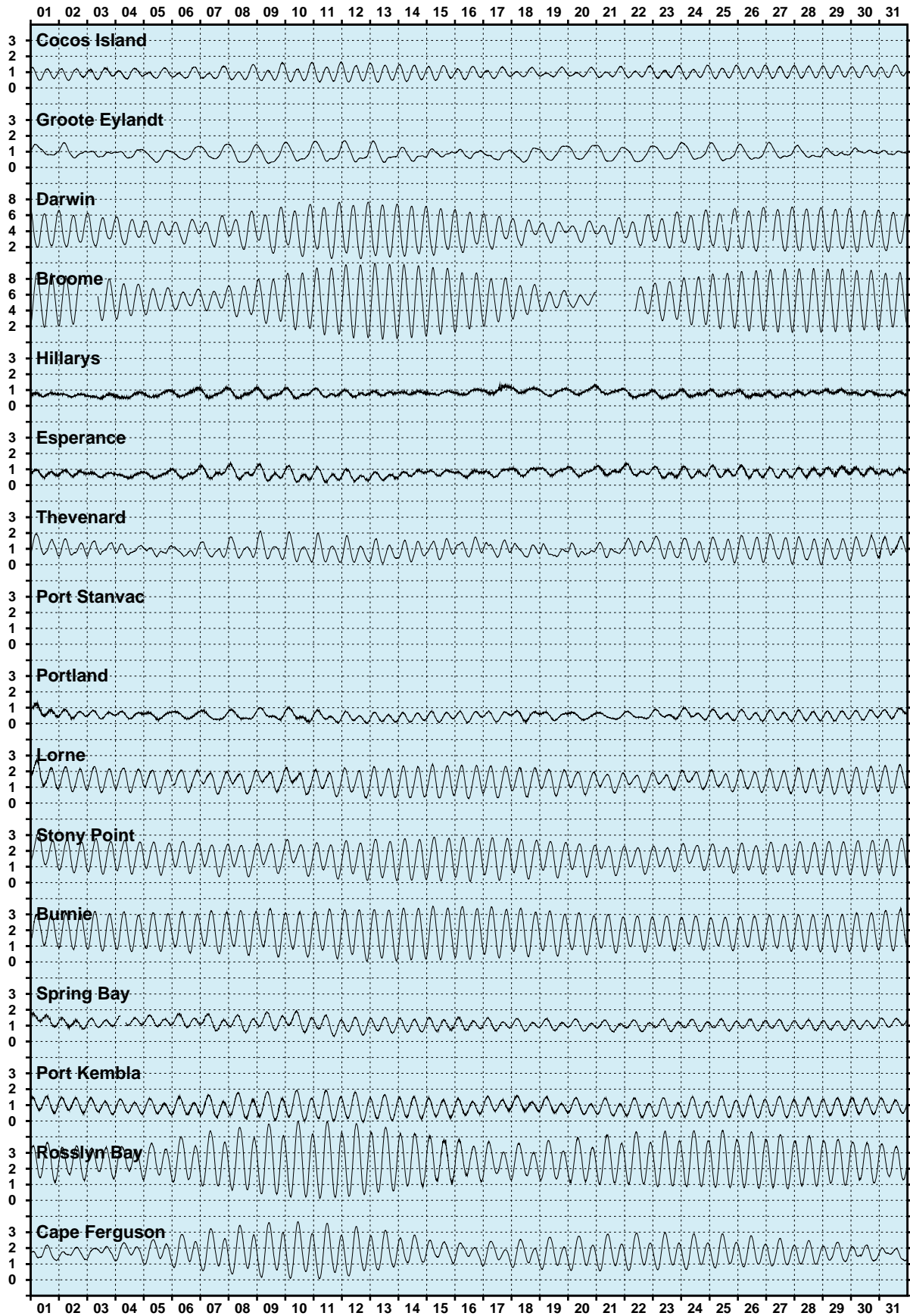


Figure 3. Sea level observations during August 2014.

SIX MINUTE RESIDUAL WATER LEVELS (m)

August 2014 (UTC)

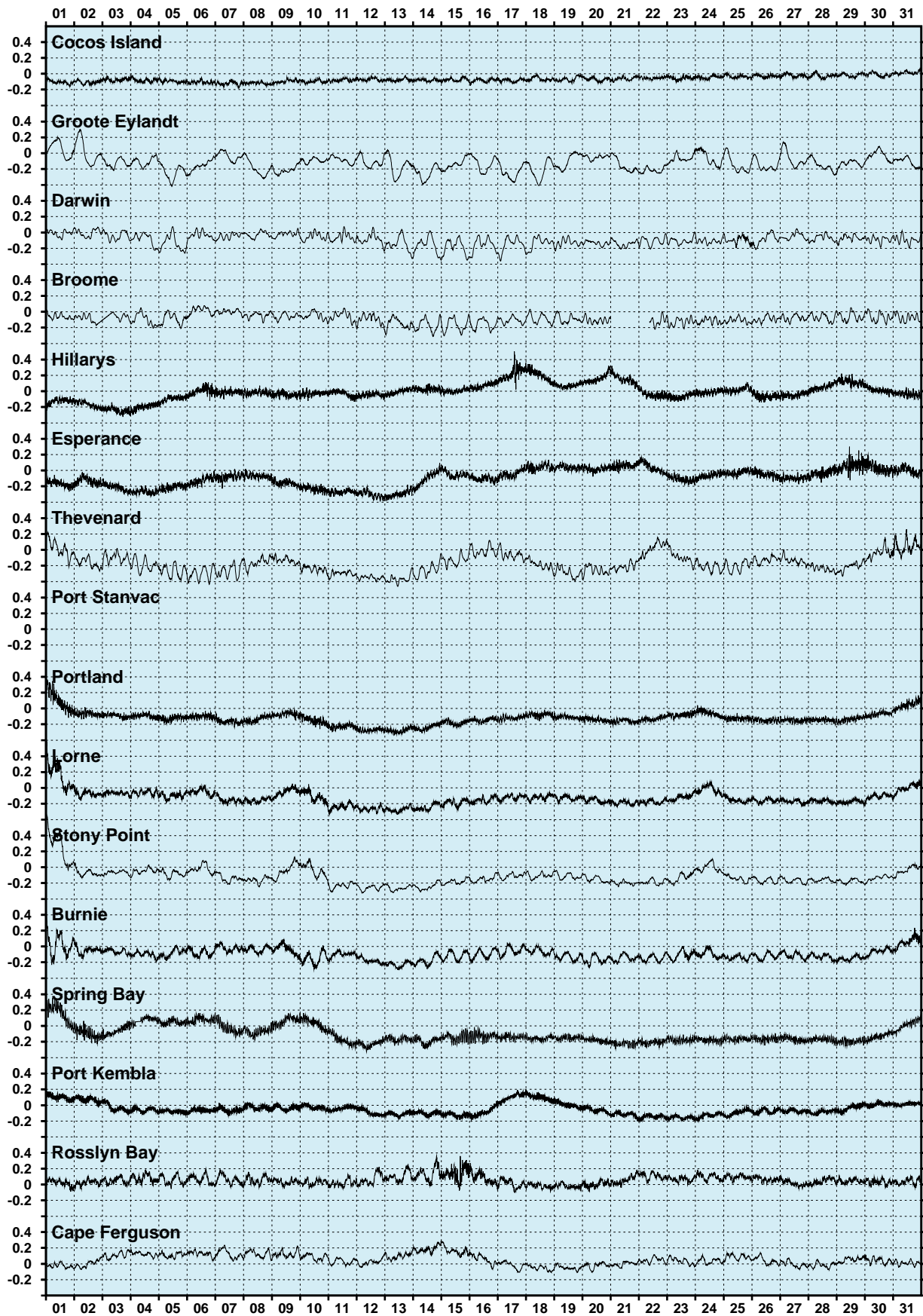


Figure 4. Residual sea levels during August 2014.

SIX MINUTE RESIDUALS ADJUSTED FOR BAROMETRIC PRESSURE (m)

August 2014 (UTC)

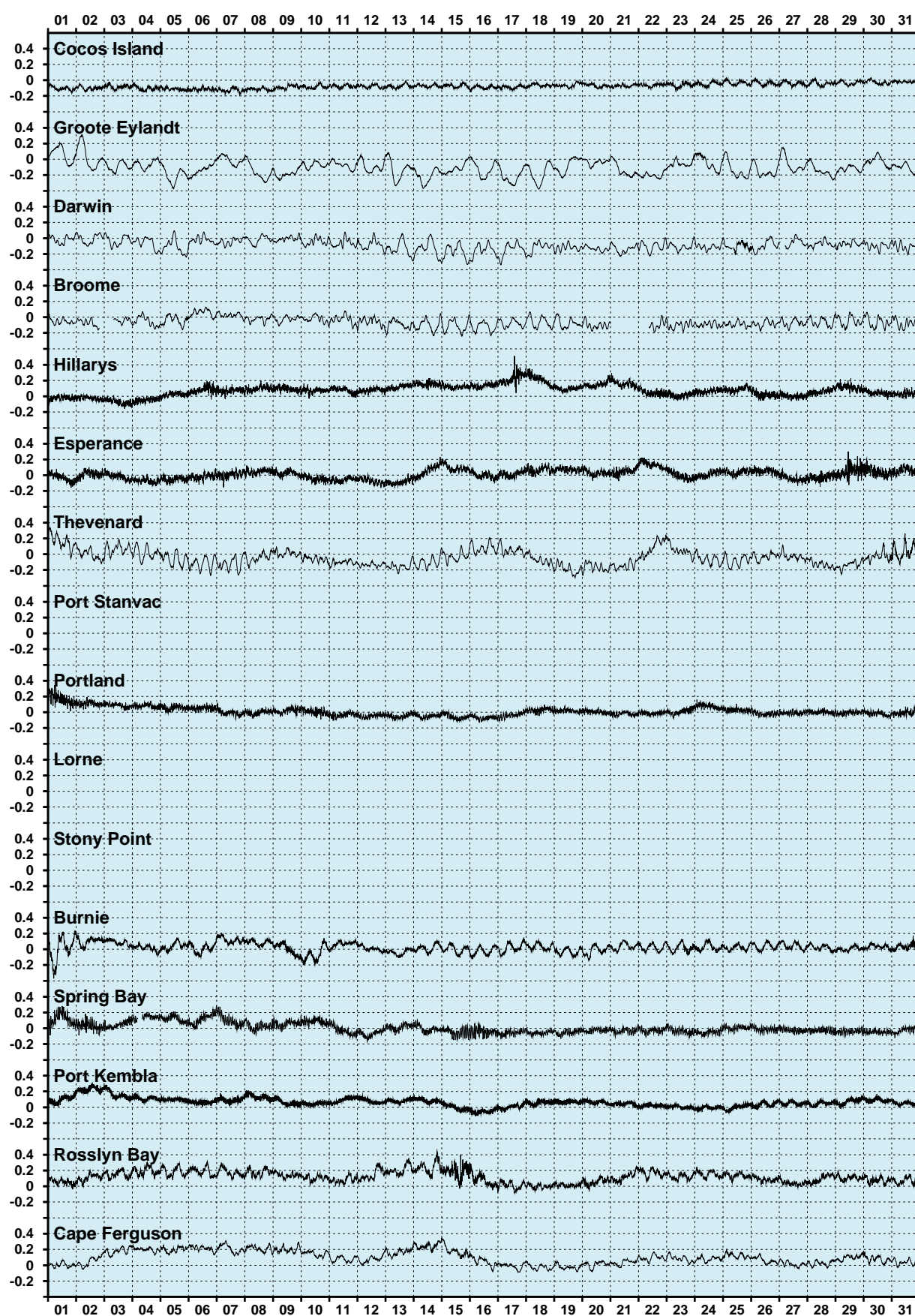


Figure 5. Residual sea levels adjusted for barometric pressure during August 2014.

HOURLY WIND SPEEDS (m/s)

August 2014 (UTC)

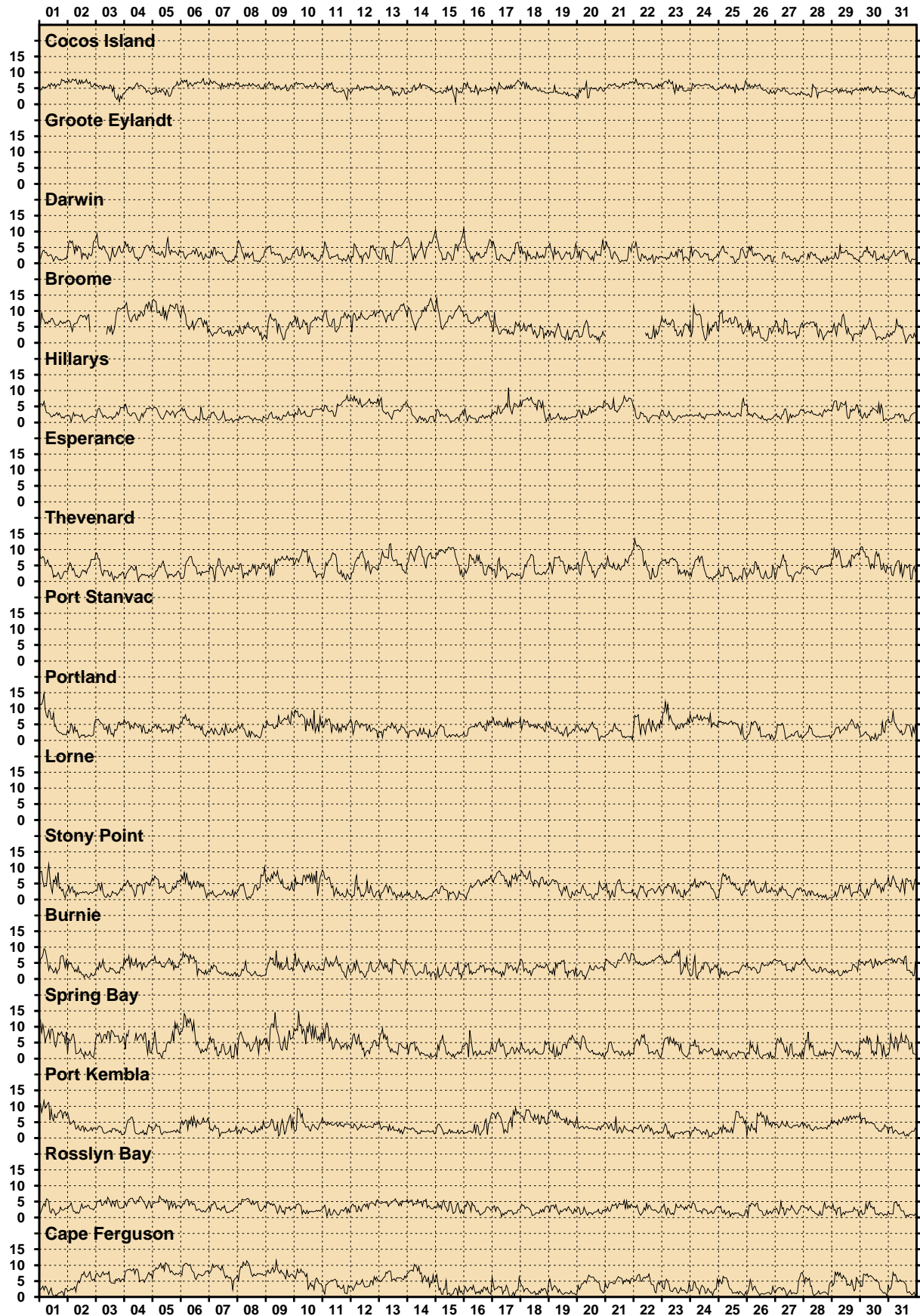


Figure 6. Wind speeds during August 2014.

HOURLY MAXIMUM WIND GUSTS (m/s)

August 2014 (UTC)

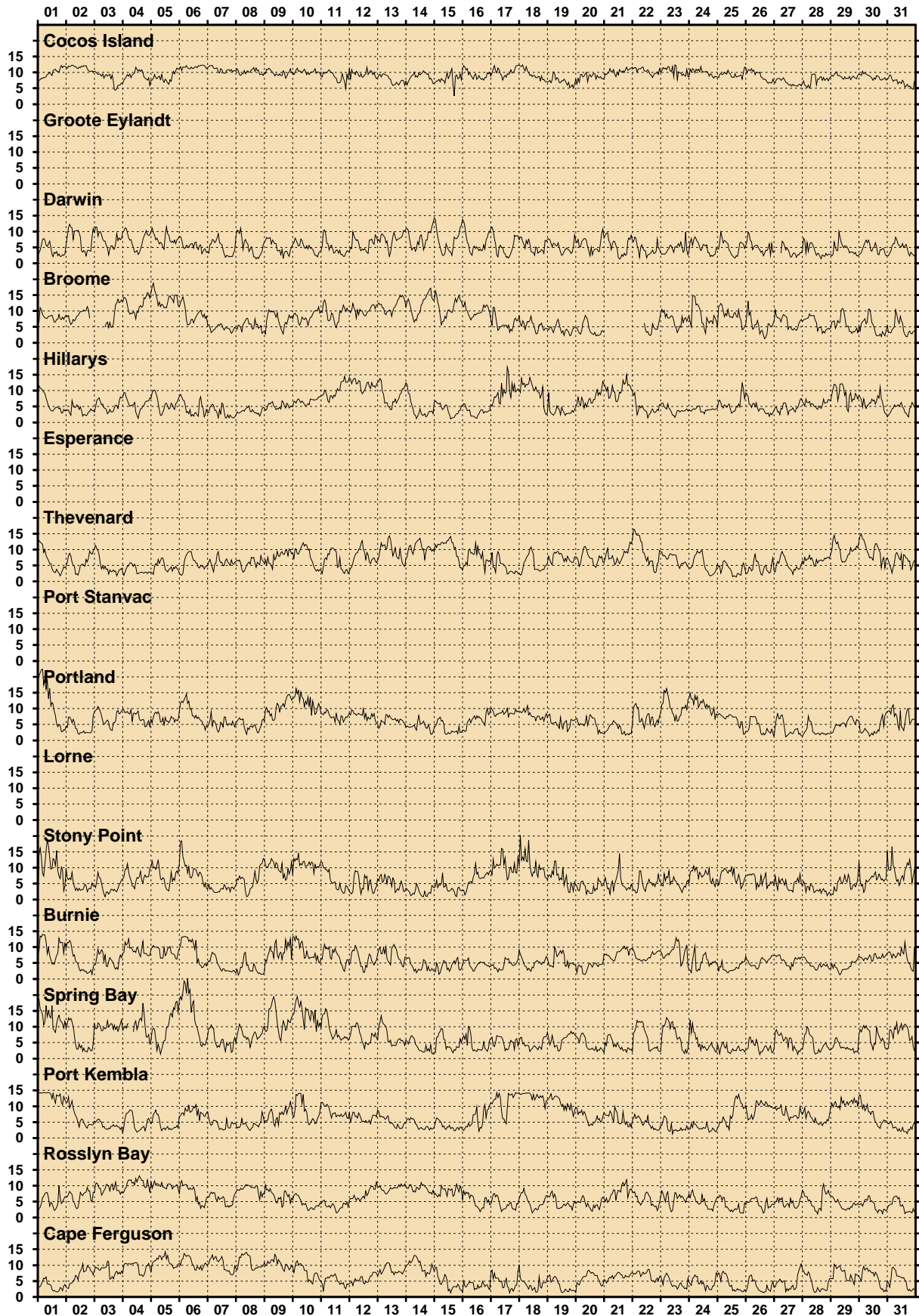


Figure 7. Wind gusts during August 2014.

HOURLY INCIDENT WINDS (m/s, °True)

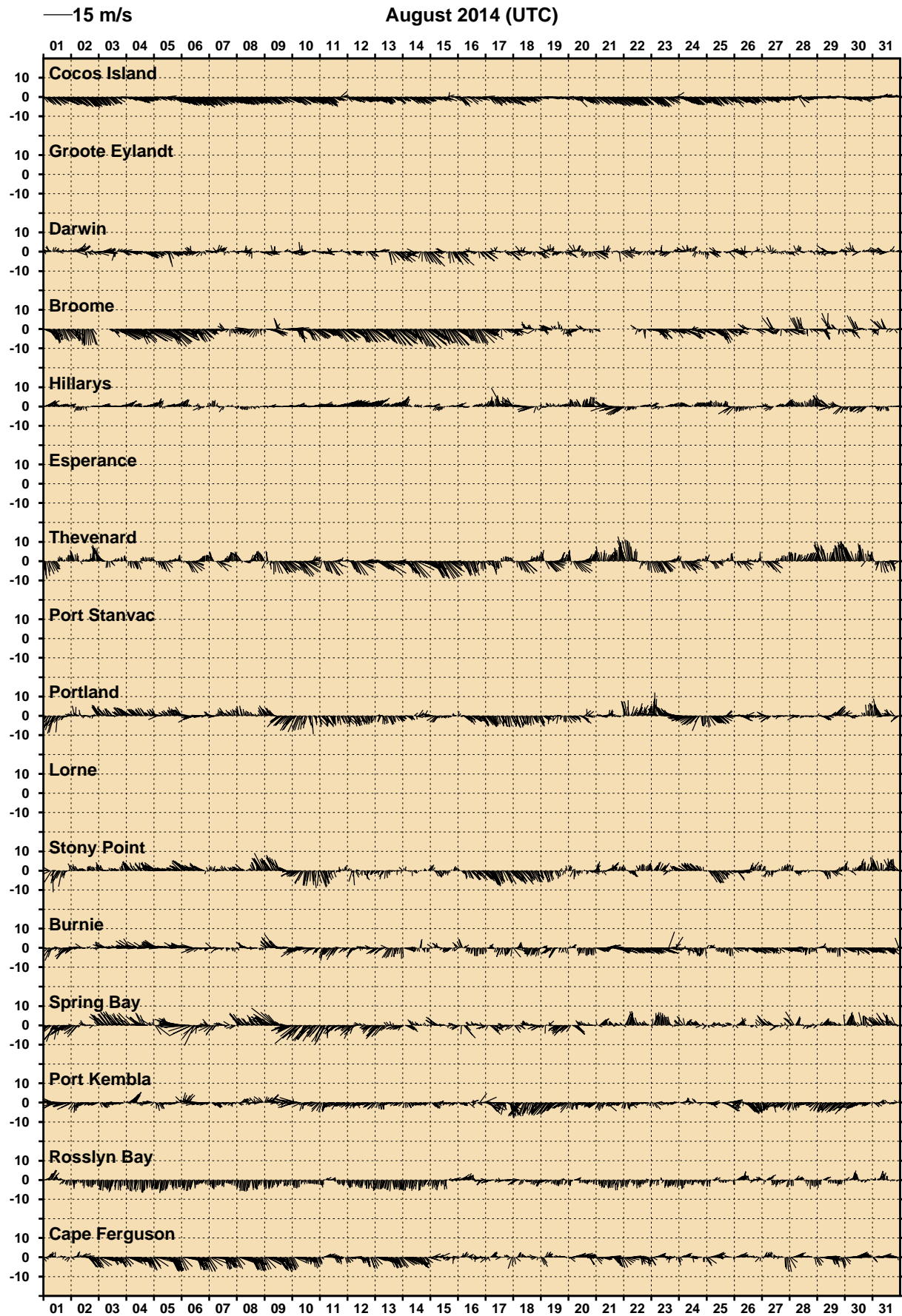


Figure 8. Incident winds during August 2014.

HOURLY AIR TEMPERATURES (°C)

August 2014 (UTC)

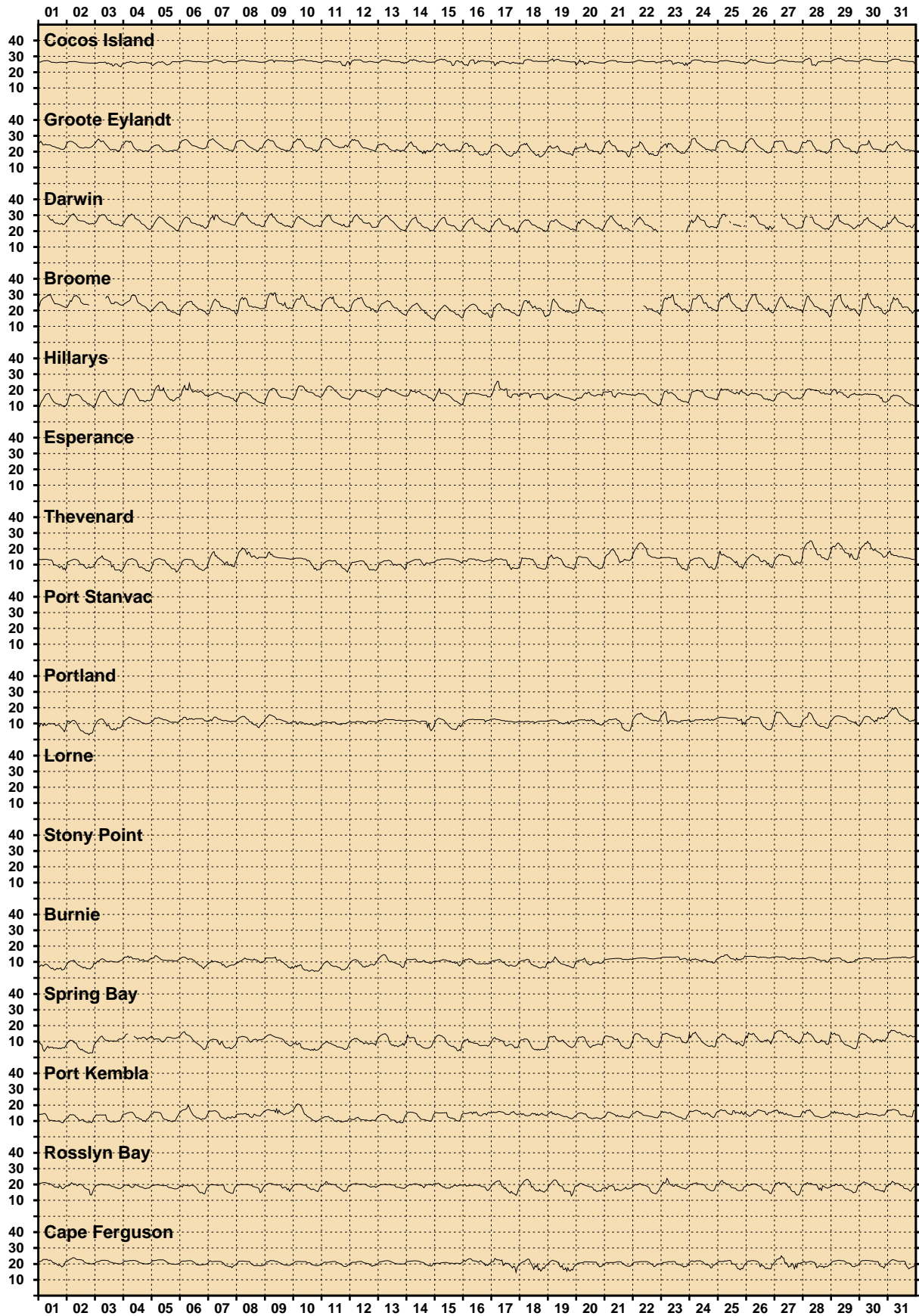


Figure 9. Air temperatures during August 2014.

HOURLY WATER TEMPERATURES (°C)

August 2014 (UTC)



Figure 10. Water temperatures during August 2014.

HOURLY BAROMETRIC PRESSURE (hPa)

August 2014 (UTC)

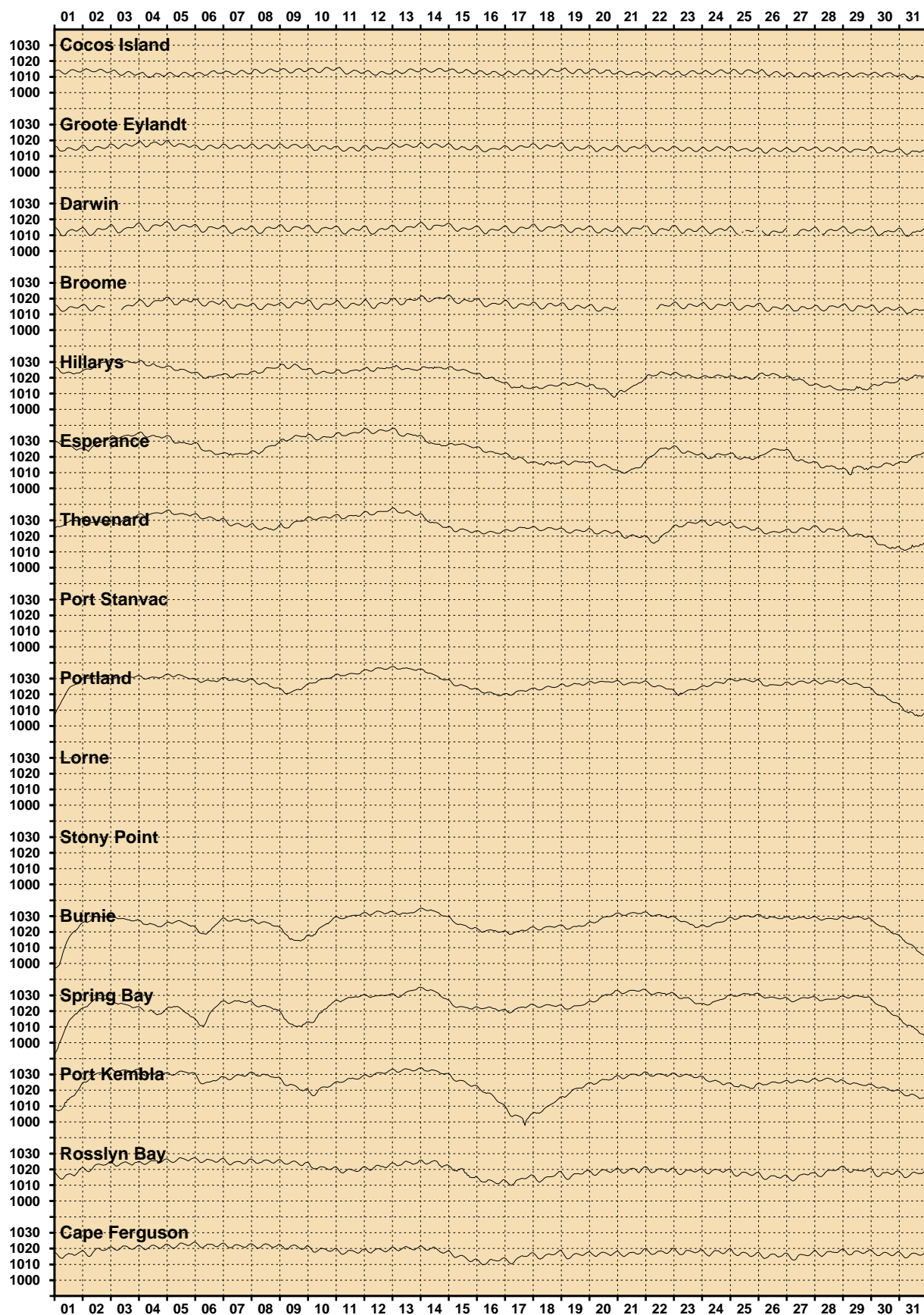


Figure 11. Barometric pressures during August 2014.

COMPARISON OF AUGUST 2014 MAX,MIN AND MEAN WITH LONG-TERM AUGUST VALUES

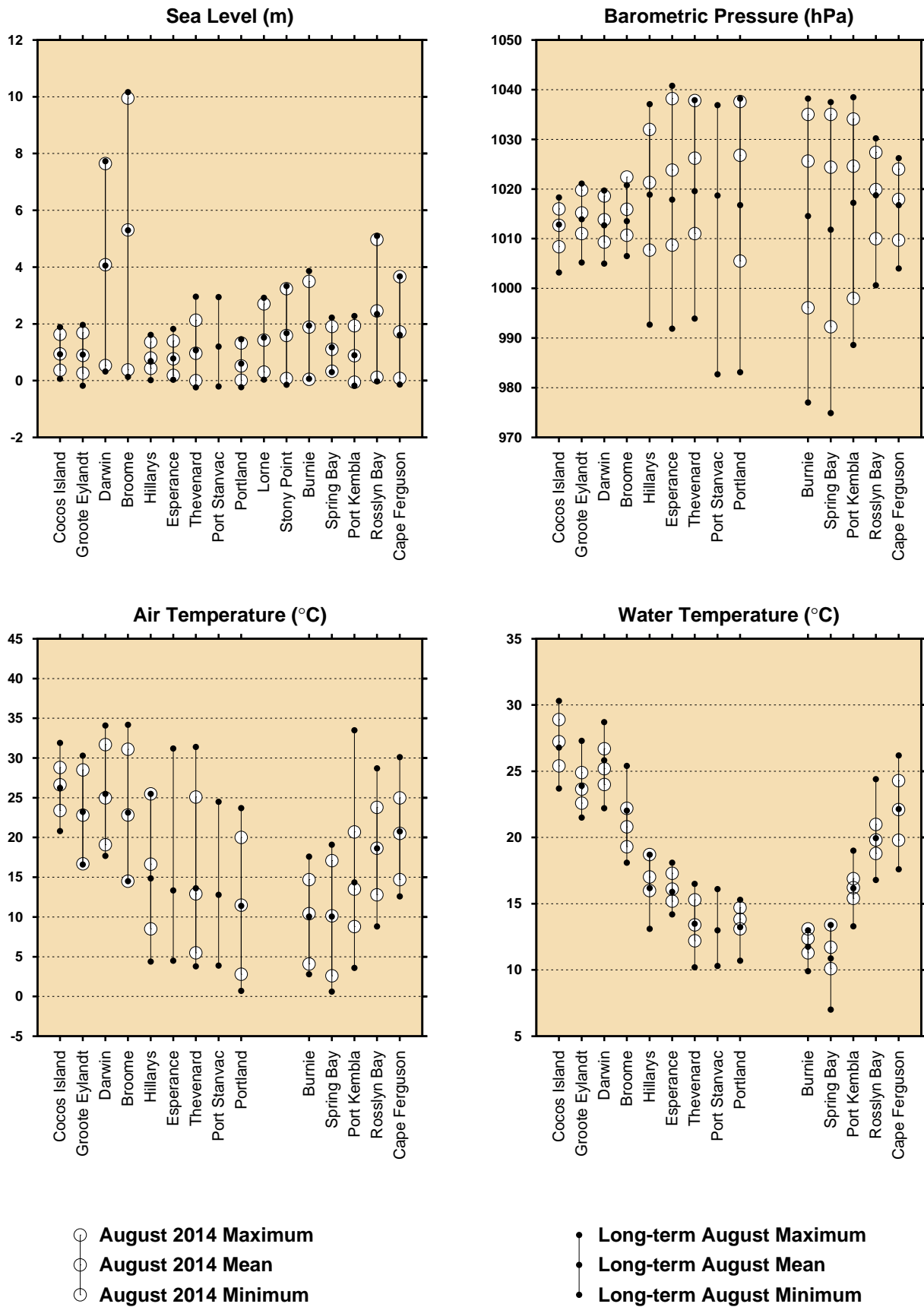


Figure 12. Comparison of August 2014 data with long-term August values.

MONTHLY MEAN SEA LEVELS THROUGH AUGUST 2014 (m) (The zero line represents mean sea level)

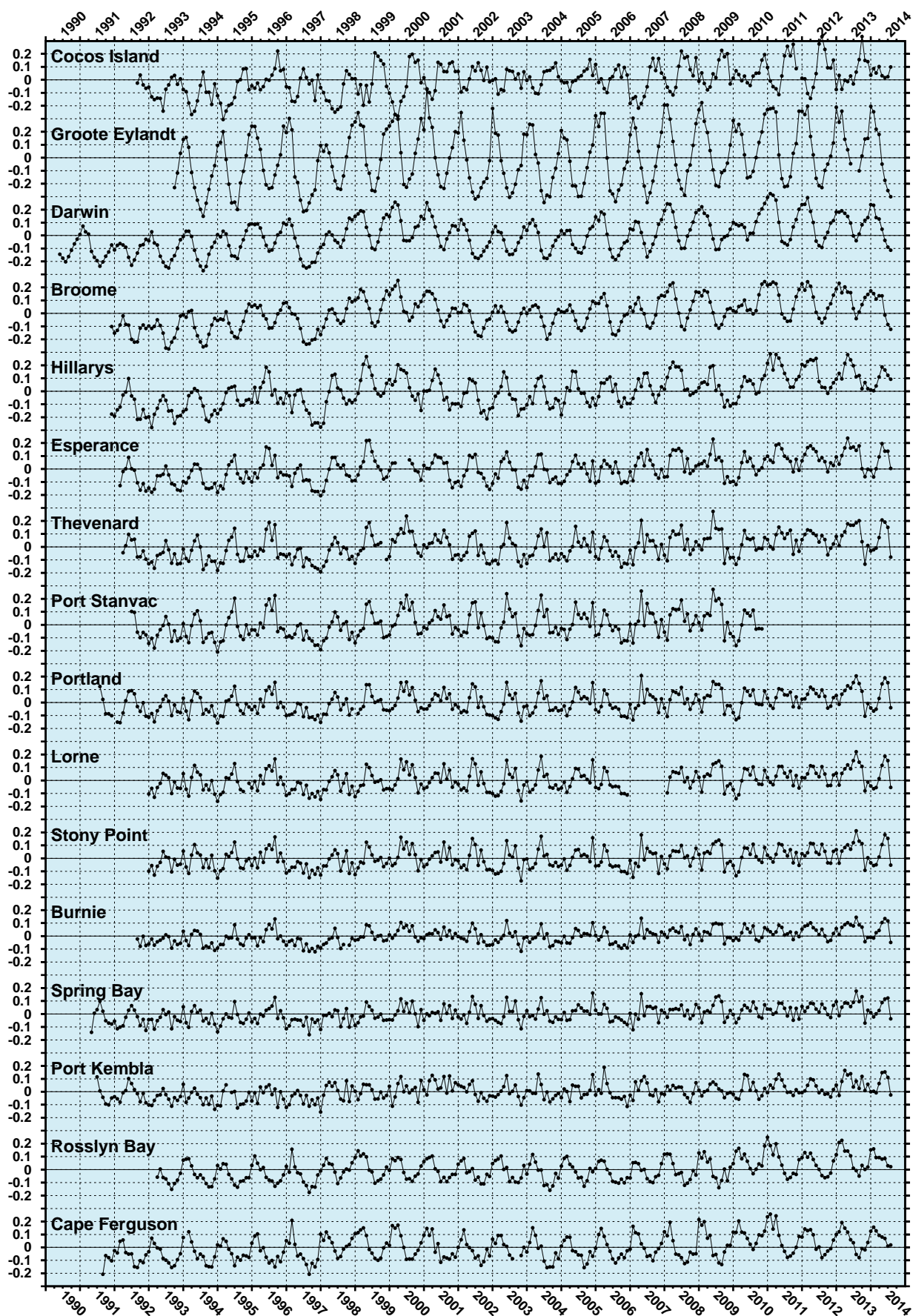


Figure 13. Monthly mean sea levels to August 2014.

MONTHLY MEAN BAROMETRIC PRESSURES THROUGH AUGUST 2014 (hPa)

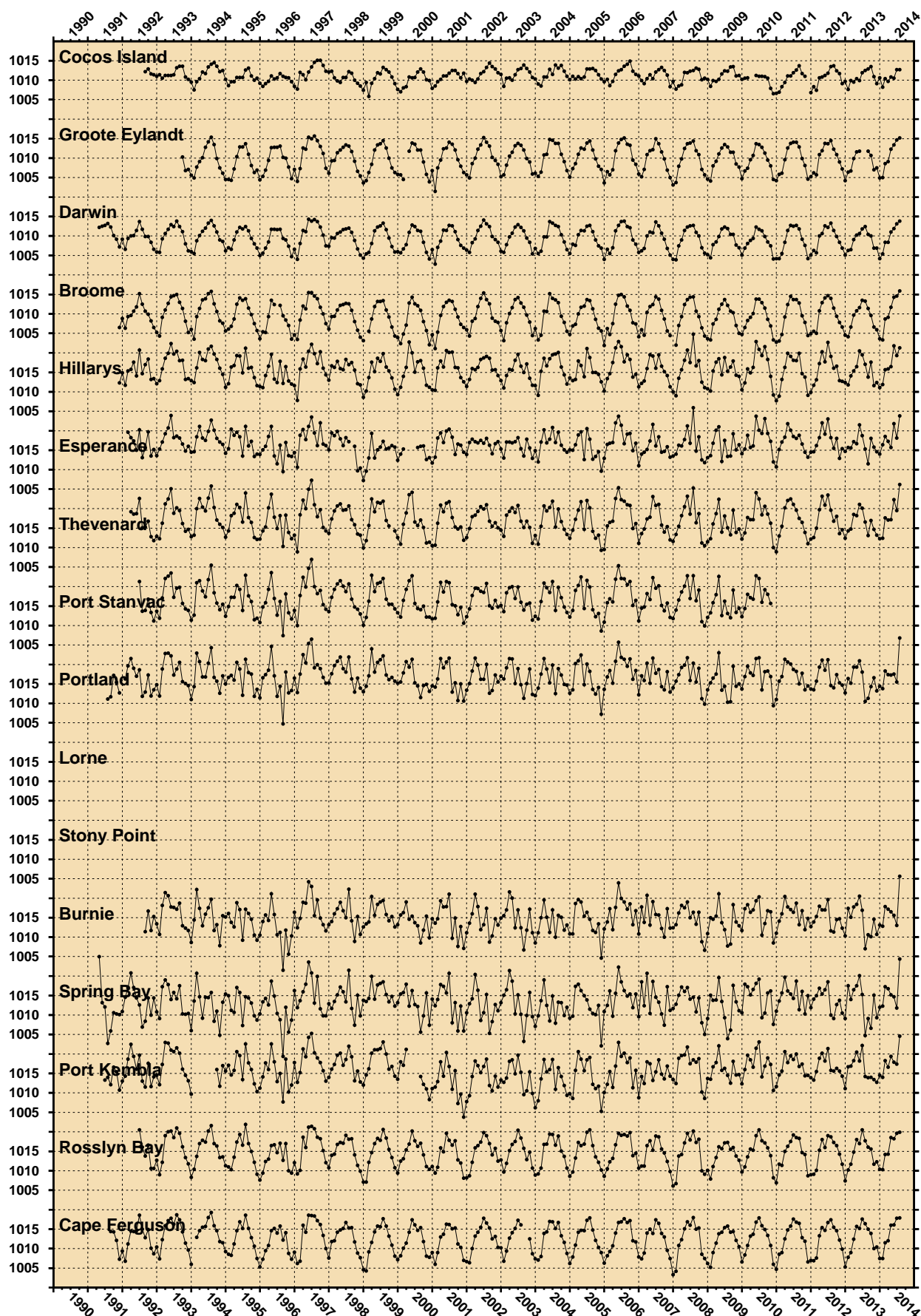


Figure 14. Monthly mean barometric pressures to August 2014.

MONTHLY MEAN WATER TEMPERATURES THROUGH AUGUST 2014 (°C)

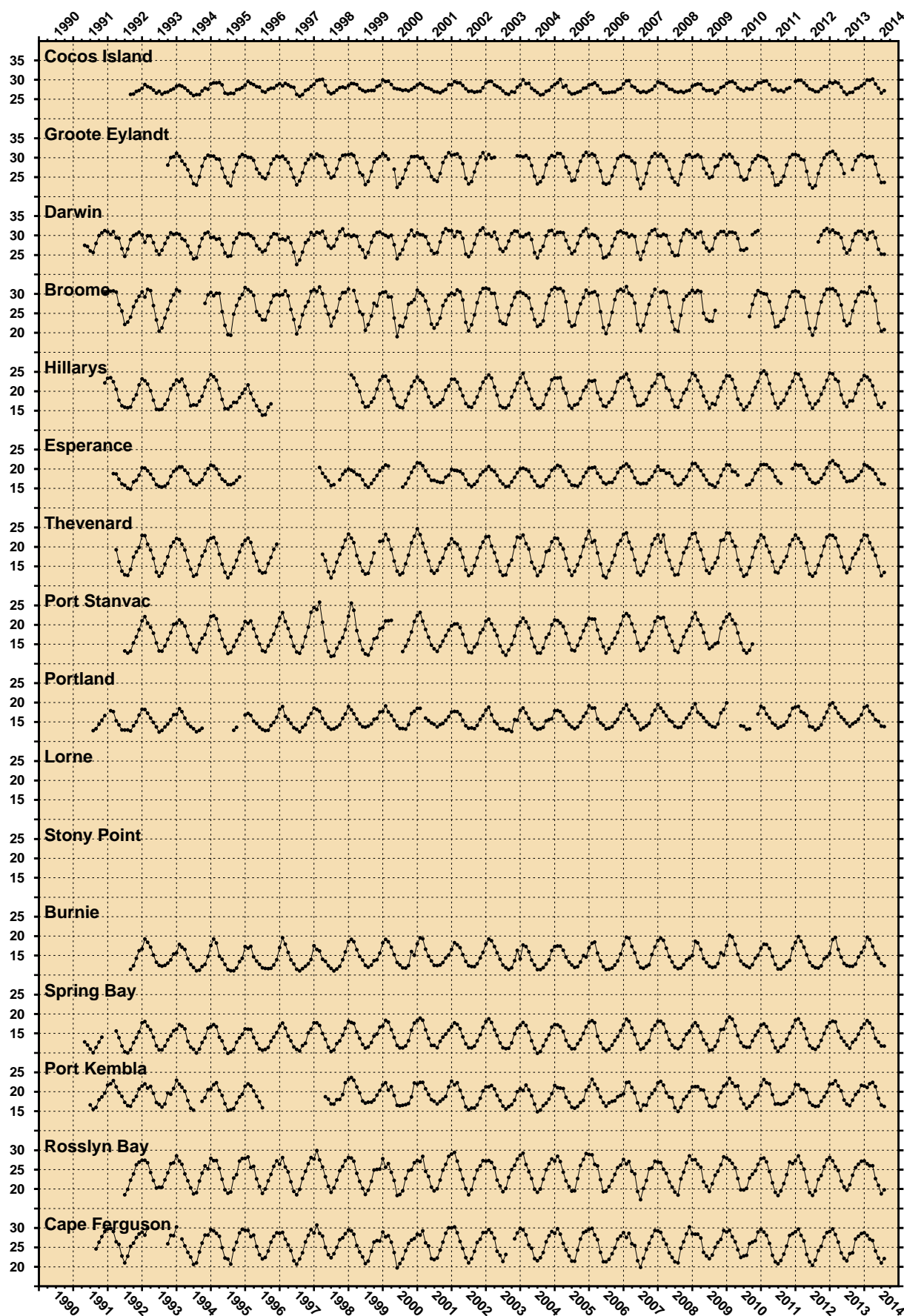


Figure 15. Monthly mean water temperatures to August 2014.

MONTHLY MEAN AIR TEMPERATURES THROUGH AUGUST 2014 (°C)

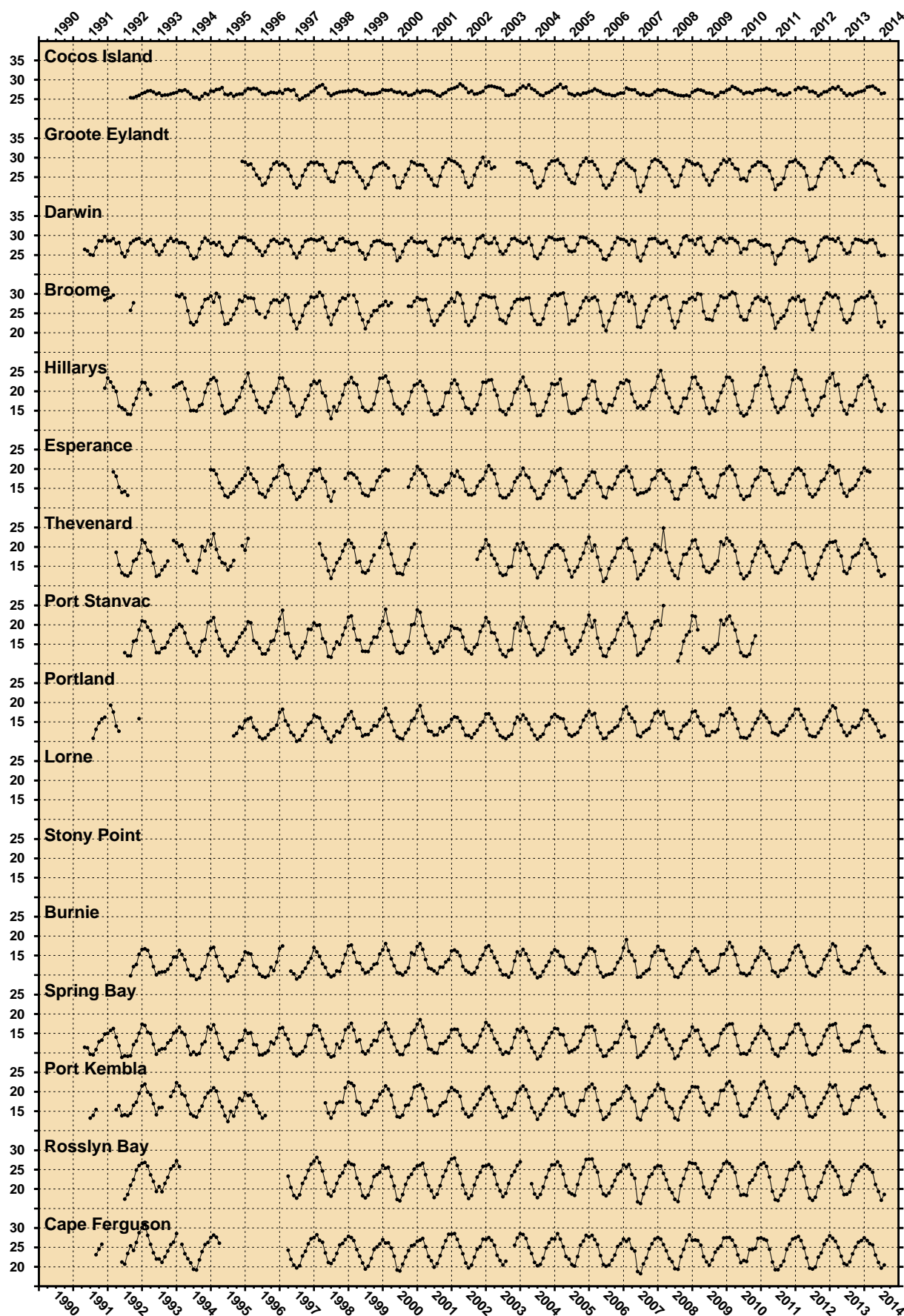


Figure 16. Monthly mean air temperatures to August 2014.

SEA LEVEL ANOMALIES THROUGH AUGUST 2014 (m)

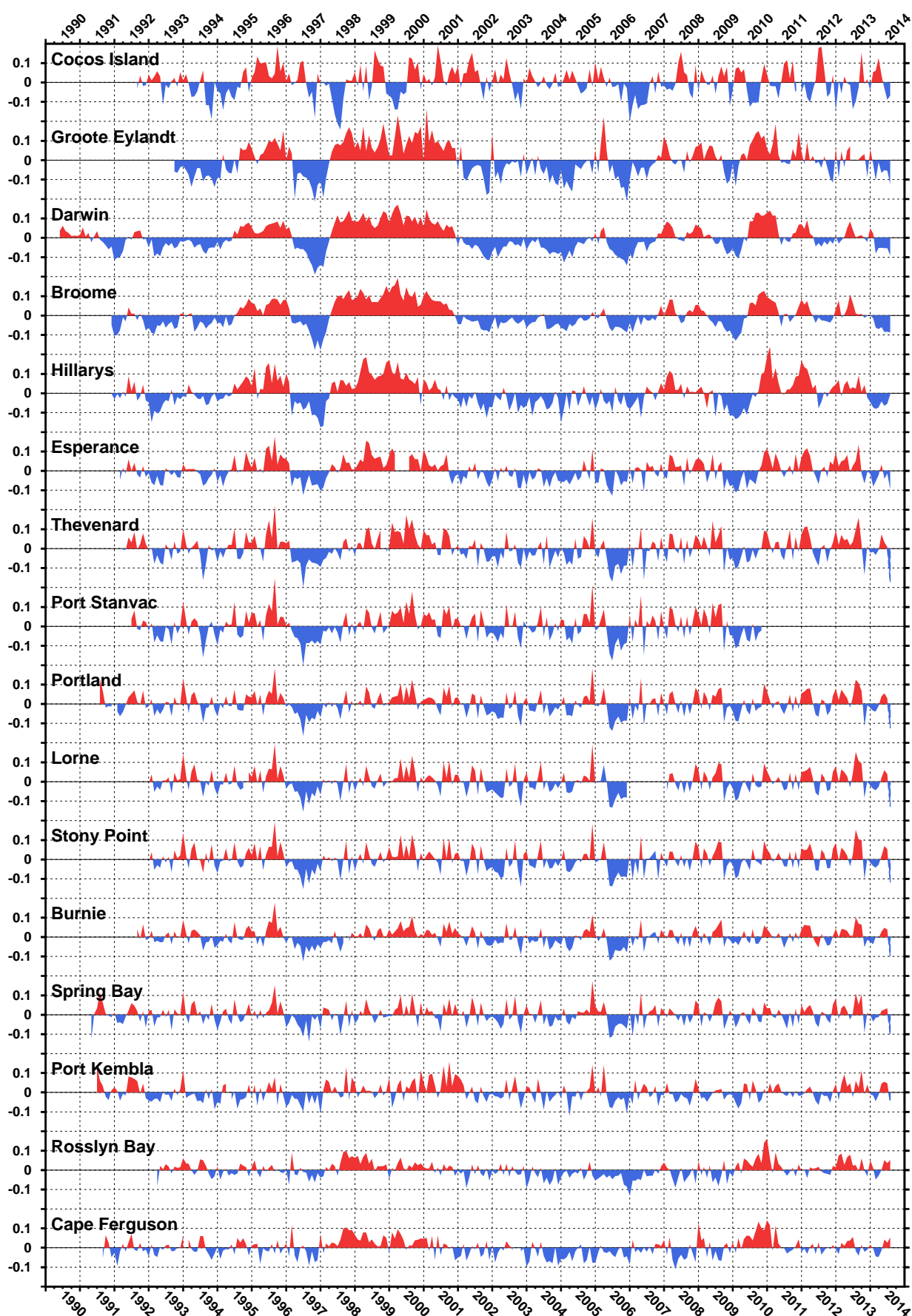


Figure 17. Monthly sea level anomalies to August 2014.

BAROMETRIC PRESSURE ANOMALIES THROUGH AUGUST 2014 (hPa)

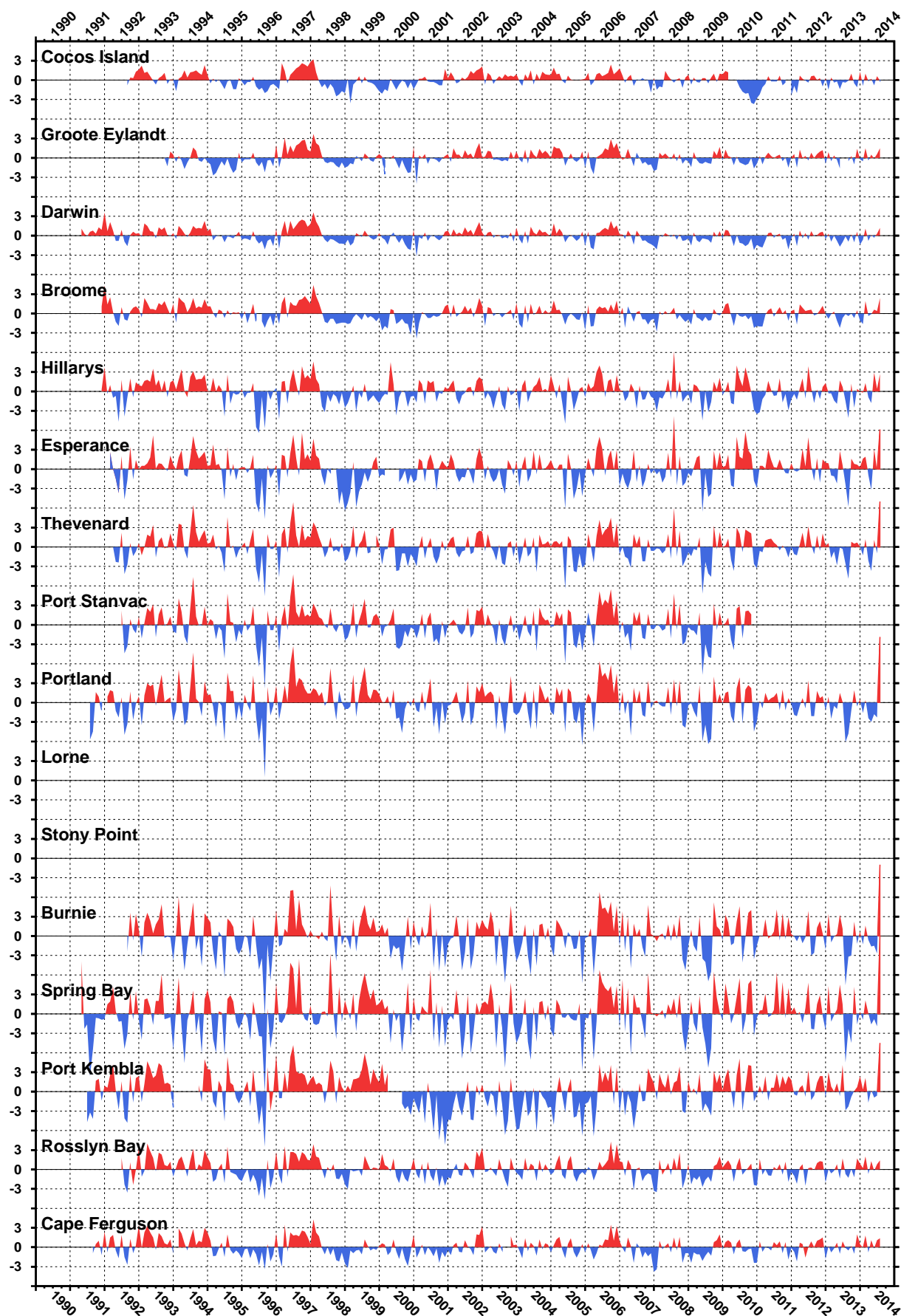


Figure 18. Monthly barometric pressure anomalies to August 2014.

WATER TEMPERATURE ANOMALIES THROUGH AUGUST 2014 (°C)

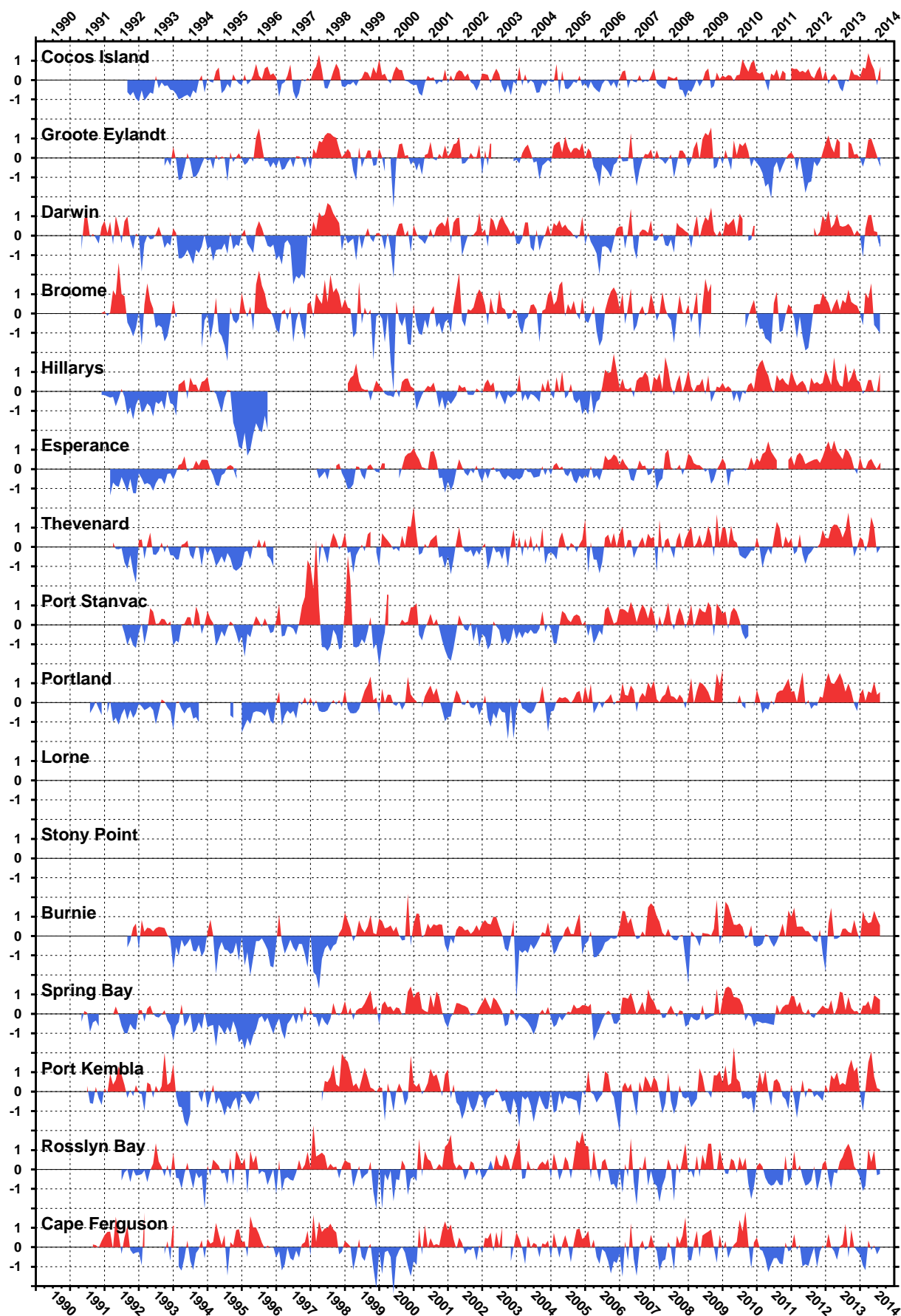


Figure 19. Monthly water temperature anomalies to August 2014.

AIR TEMPERATURE ANOMALIES THROUGH AUGUST 2014 (°C)

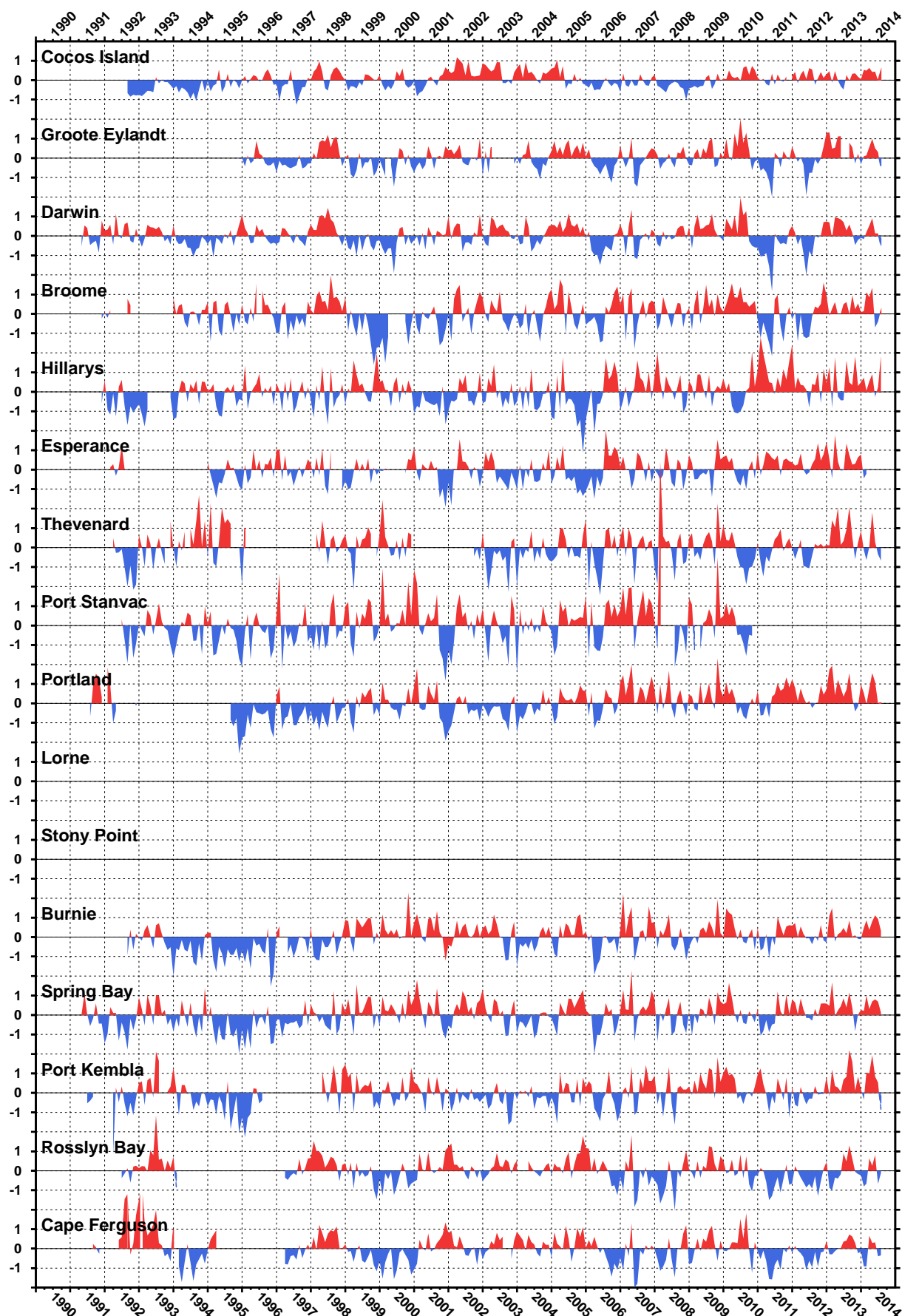


Figure 20. Monthly air temperature anomalies to August 2014.

MONTHLY SEA LEVEL DATA RETURN THROUGH AUGUST 2014 (%)

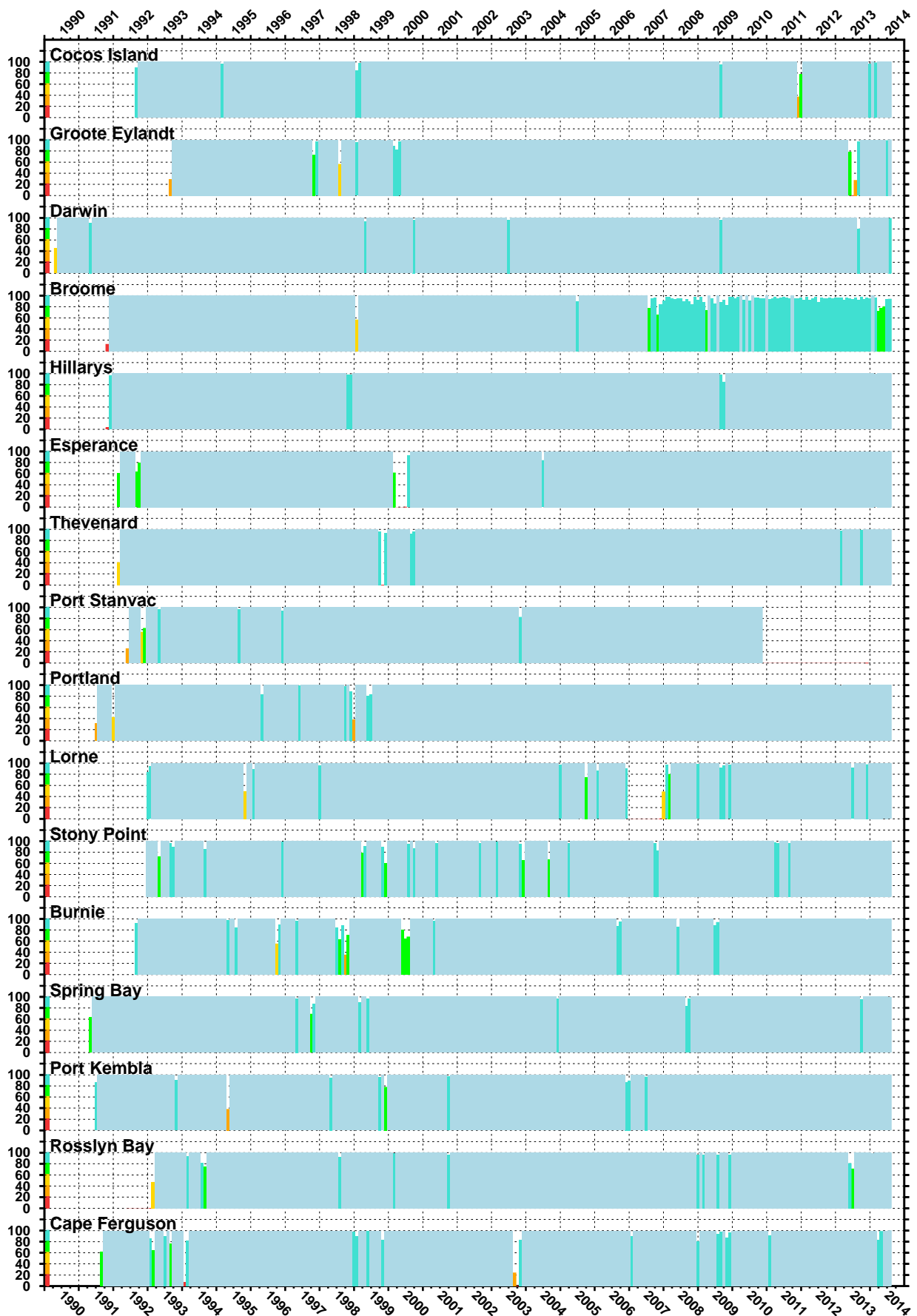


Figure 21. Sea level data return.