

## Appendix G Location of reporting regions

State-level maps are presented to better visualise approximate locations of service providers' reporting regions for the 2024–25 reporting year. Further information about individual service providers is available on their respective websites.

### G1 Reporting regions in the Australian Capital Territory

Figure G1 shows the approximate location of the service provider's reporting region in the Australian Capital Territory for the 2025 NPR.



**Figure G1** The approximate location of the reporting region in the Australian Capital Territory included in the NPR Framework for the 2024–25 reporting year.

## G2 Reporting regions in New South Wales

Figure G2 shows the approximate locations of service providers' reporting regions in New South Wales for the 2025 NPR.

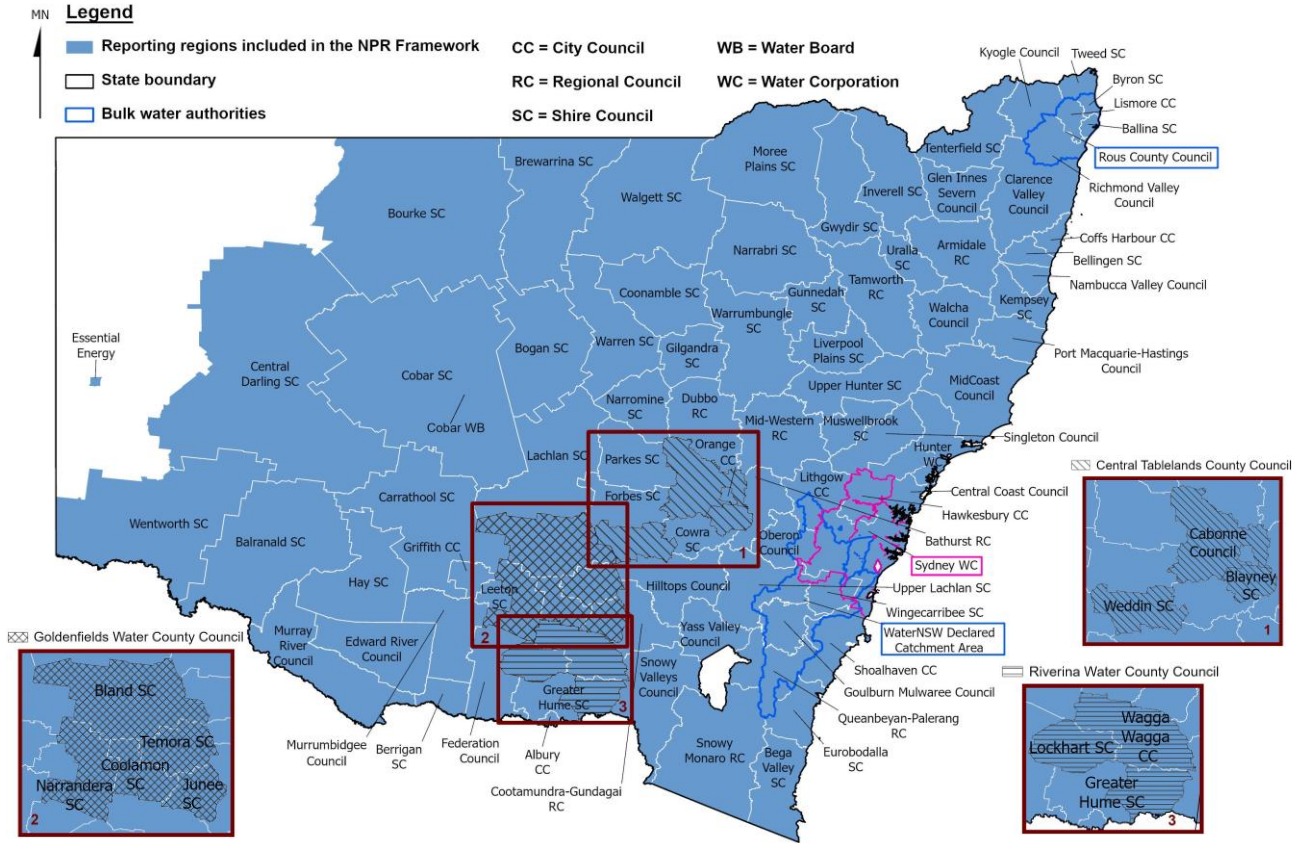
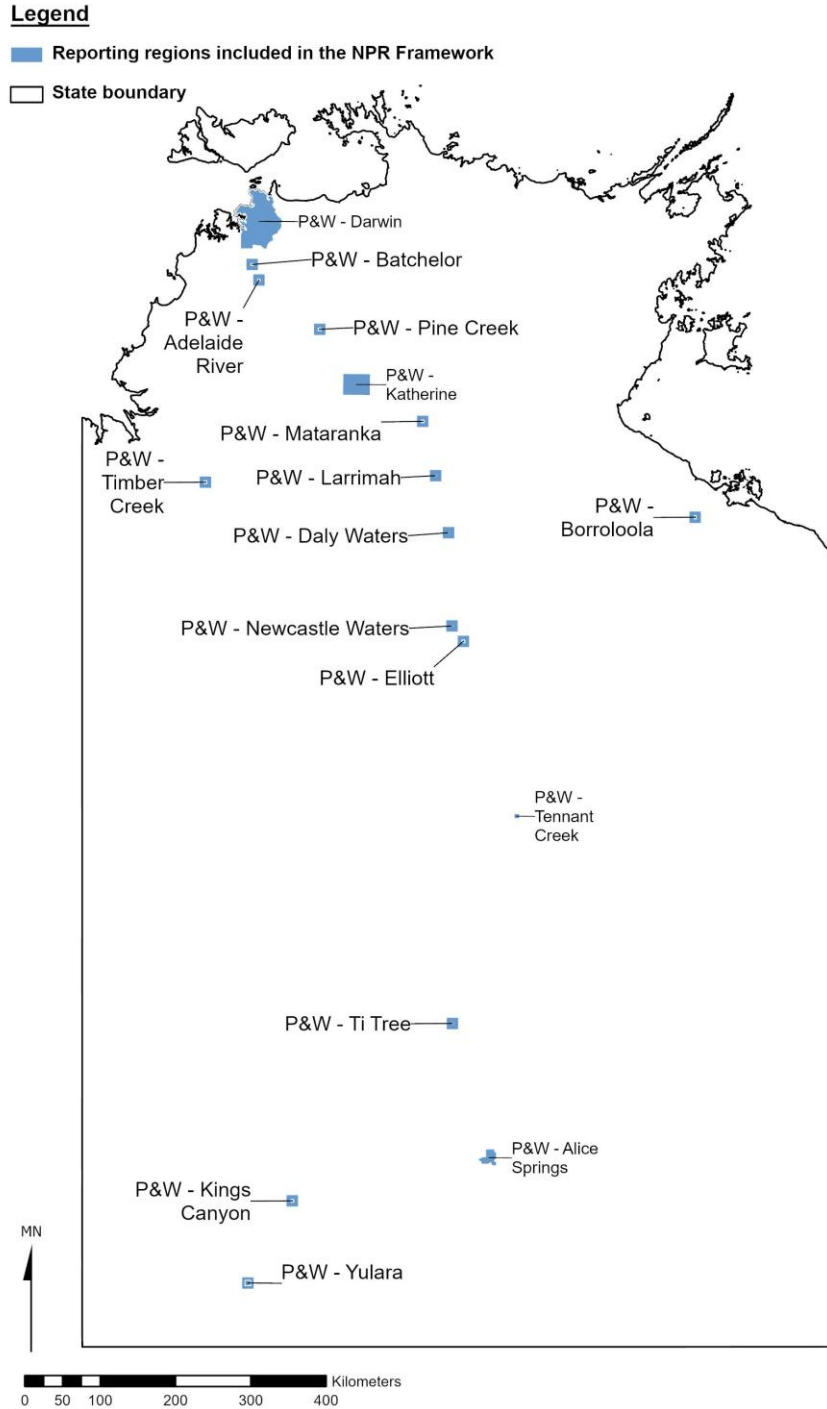


Figure G2 The approximate locations of the reporting regions in New South Wales included in the NPR Framework for the 2024–25 reporting year.

### G3 Reporting regions in the Northern Territory

Figure G3 shows the approximate locations of the service provider's reporting regions in the Northern Territory for the 2025 NPR. Power and Water Corporation (P&W) reported performance data for Alice Springs, Darwin, Katherine and Tennant Creek individually. For Adelaide River, Batchelor, Borroloola, Daly Waters, Elliott, Kings Canyon, Larrimah, Mataranka, Newcastle Waters, Pine Creek, Ti Tree, Timber Creek and Yulara, P&W reported aggregated data.



**Figure G3 The approximate locations of the reporting regions in the Northern Territory included in the NPR Framework for the 2024–25 reporting year.**

## G4 Reporting regions in South Australia

Figure G4 shows the approximate locations of service providers' reporting regions in South Australia for the 2025 NPR. While the South Australian Water Corporation (South Australian WC) provides services across the state, it does not provide water and wastewater services to all communities<sup>32</sup>. Some areas may have mixed service arrangements (e.g., South Australian WC providing drinking water while councils or private entities provide wastewater or recycled water services). Also, Alano Utilities Pty Ltd reported three small schemes in the 2025 NPR. These schemes are located within the Mount Barker District Council, Adelaide Plains Council and Copper Coast Council regions, but are not shown individually on the map to avoid confusion.

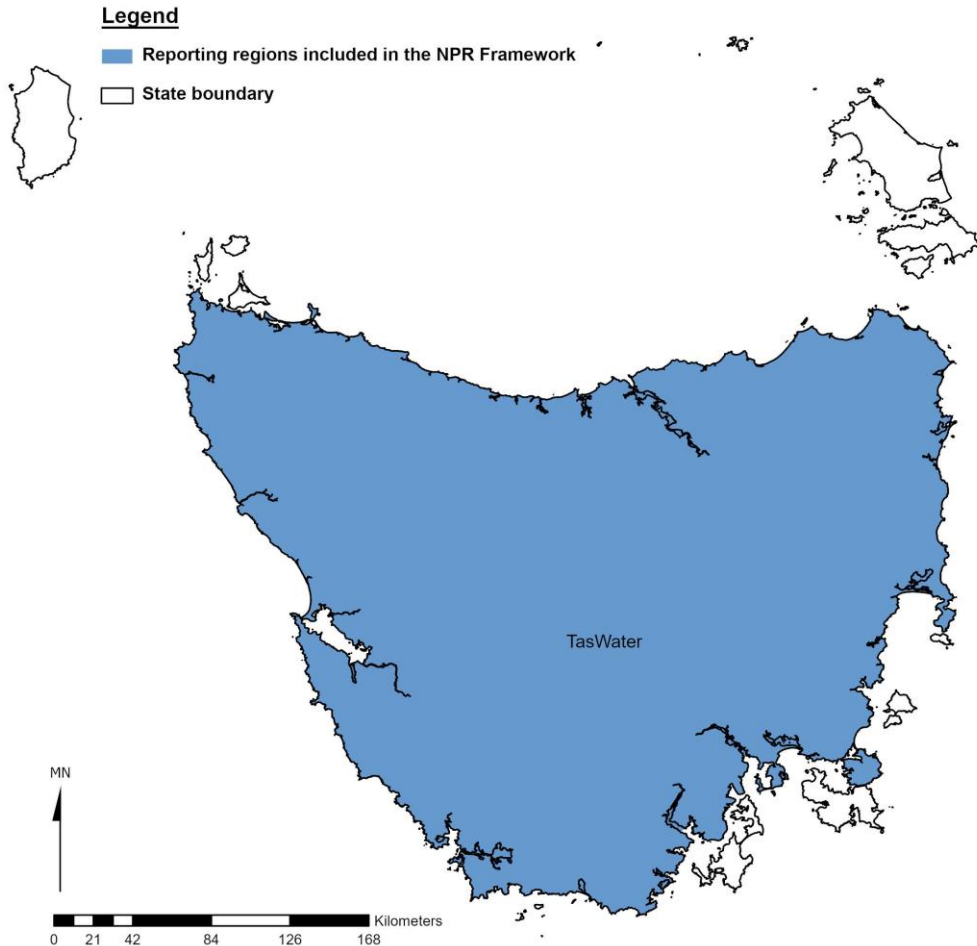


**Figure G4** The approximate locations of the reporting regions in South Australia included in the NPR Framework for the 2024–25 reporting year.

<sup>32</sup> Maps of cities and towns serviced by SA WC are available in SA Water's [2024–25 annual report](#) p.12.

## G5 Reporting regions in Tasmania

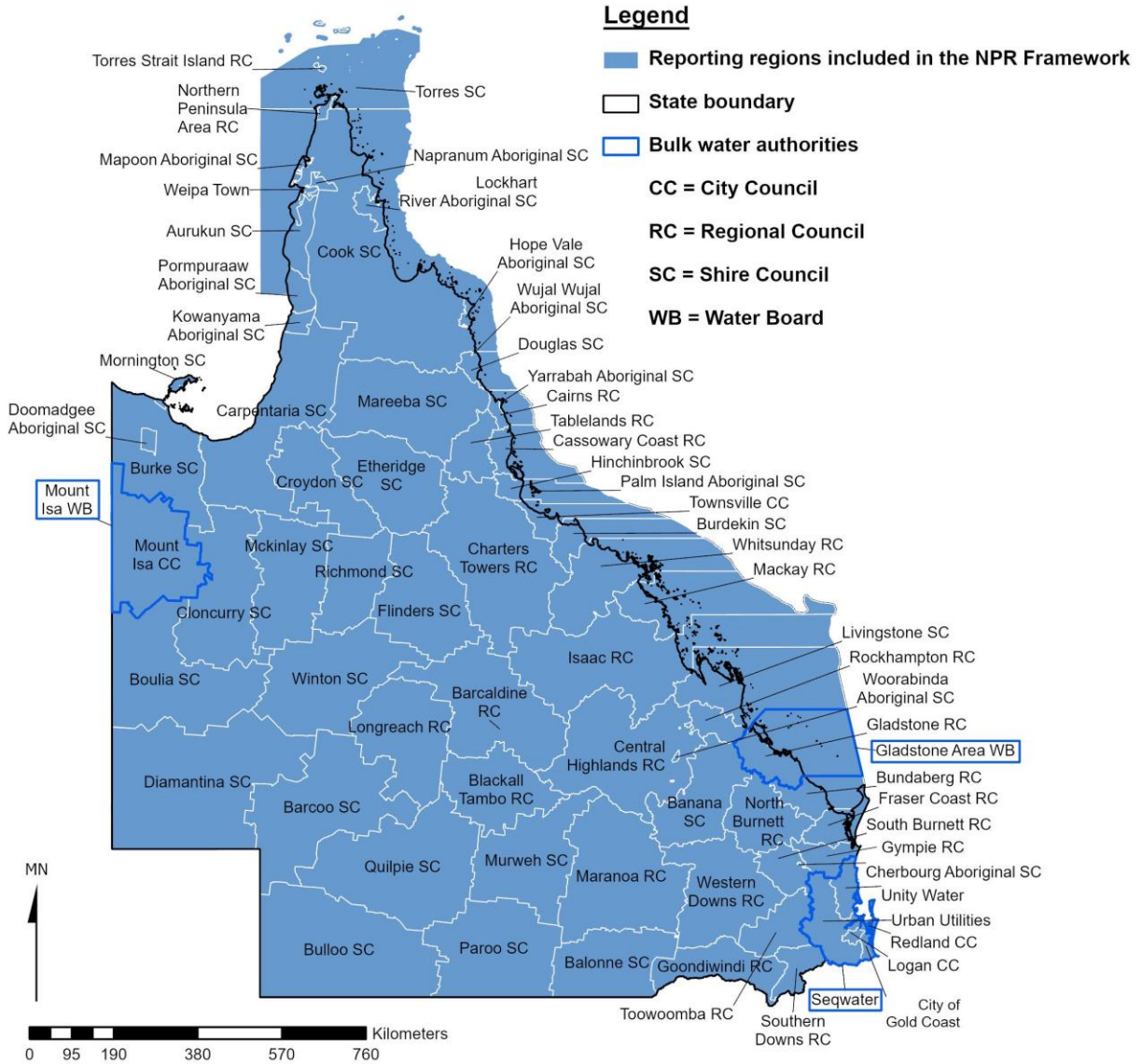
Figure G5 shows the approximate location of the service provider's reporting region in Tasmania for the 2025 NPR. While TasWater is the sole water and wastewater service provider in Tasmania, the map does not reflect its actual operational service area. Some regions shown as covered are not fully serviced by TasWater in practice, while other regions, such as King and Flinders Islands, are serviced by TasWater but do not report to the NPR Framework.



**Figure G5 The approximate location of the reporting region in Tasmania included in the NPR Framework for the 2024–25 reporting year.**

# G6 Reporting regions in Queensland

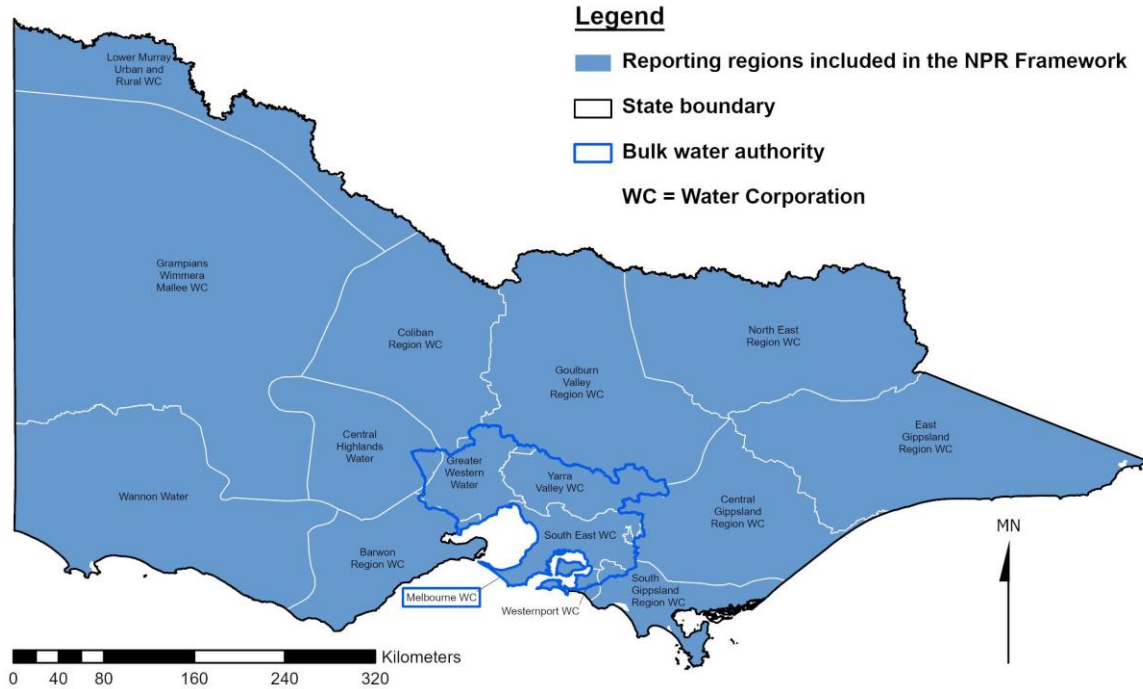
Figure G6 shows the approximate locations of service providers' reporting regions in Queensland for the 2025 NPR.



**Figure G6** The approximate locations of the reporting regions in Queensland included in the NPR Framework for the 2024–25 reporting year.

## G7 Reporting regions in Victoria

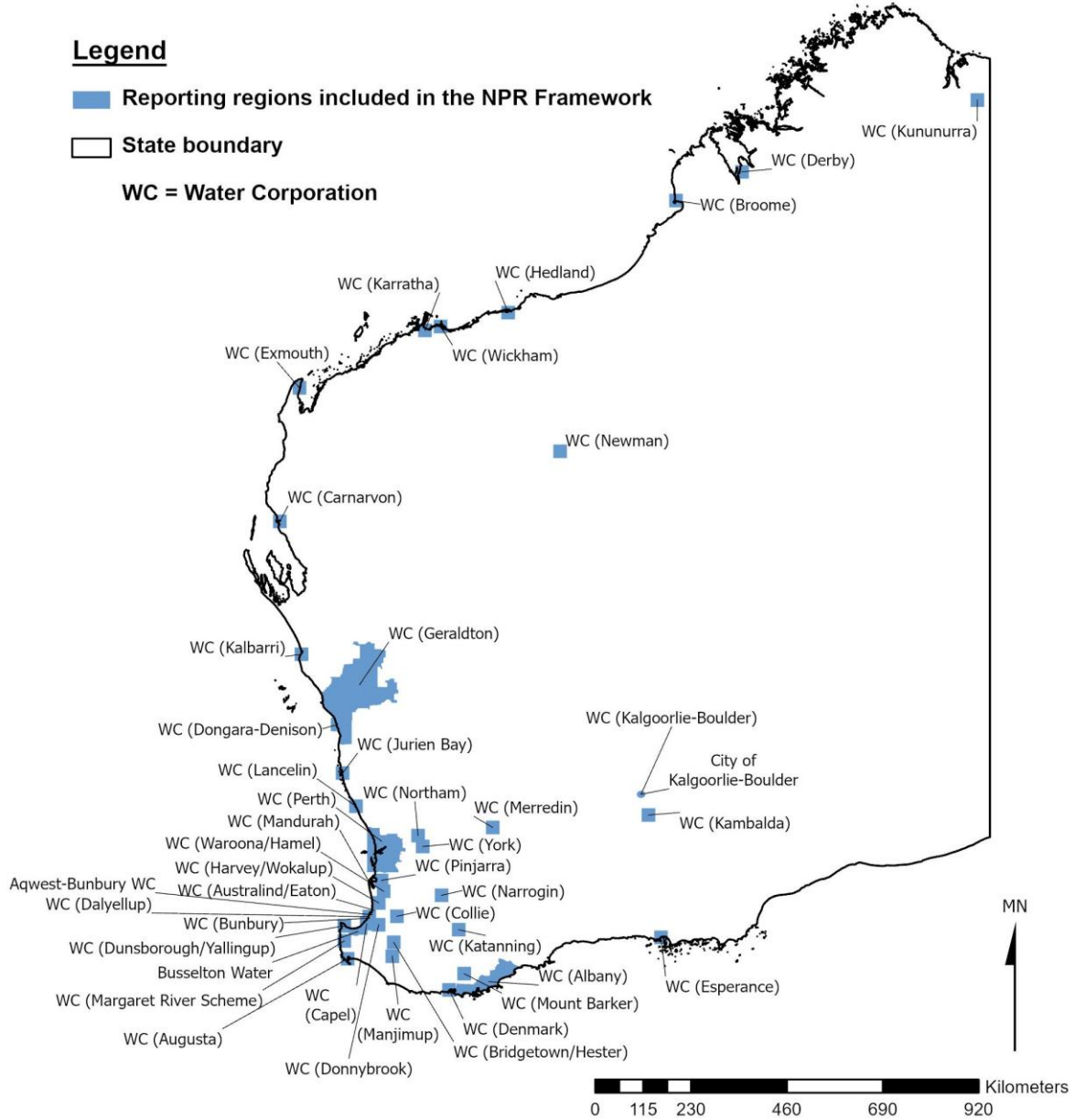
Figure G7 shows the approximate locations of service providers' reporting regions in Victoria for the 2025 NPR.



**Figure G7** The approximate locations of the reporting regions in Victoria included in the NPR Framework for the 2024–25 reporting year.

## G8 Reporting regions in Western Australia

Figure G8 shows the approximate locations of service providers' reporting regions in Western Australia for the 2025 NPR.



**Figure G8** The approximate locations of the reporting regions in Western Australia included in the NPR Framework for the 2024–25 reporting year.